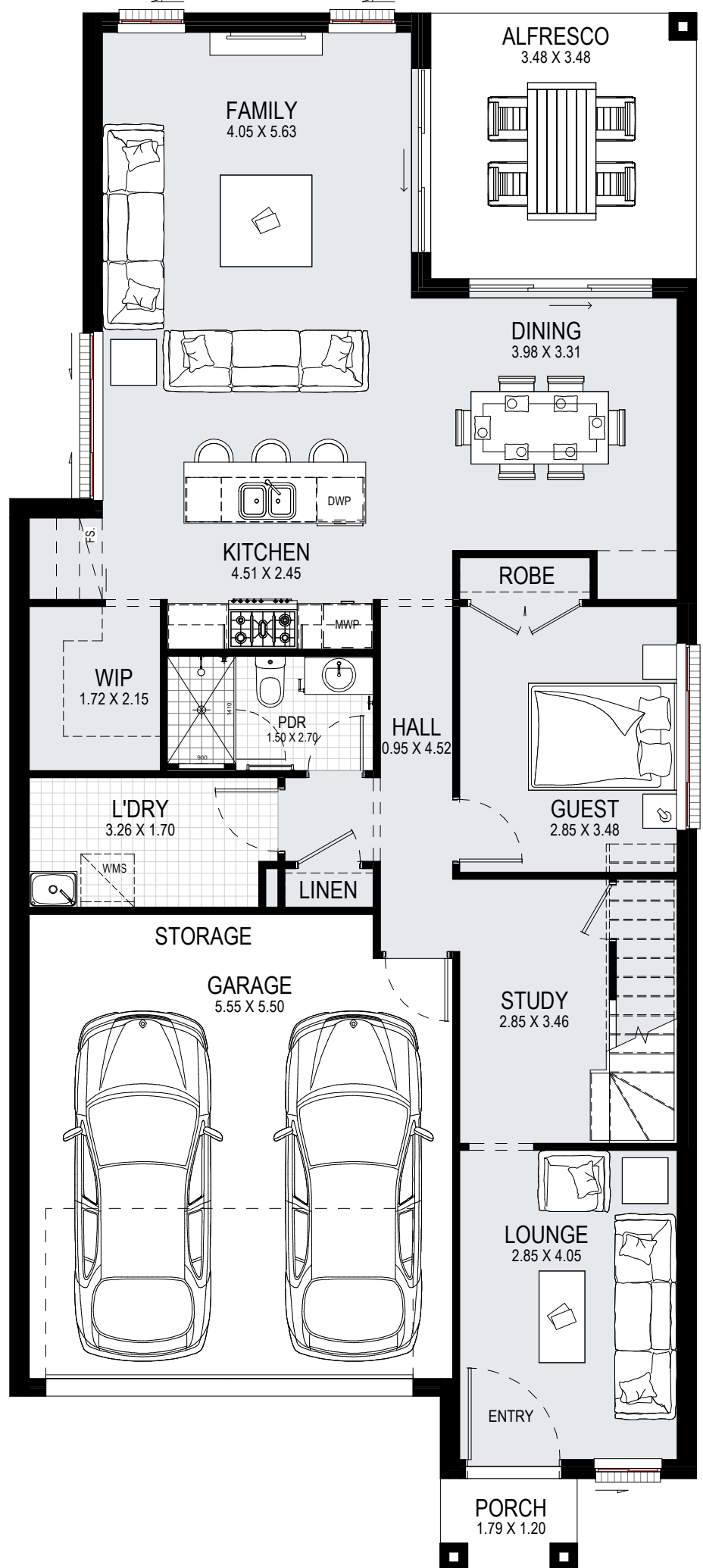
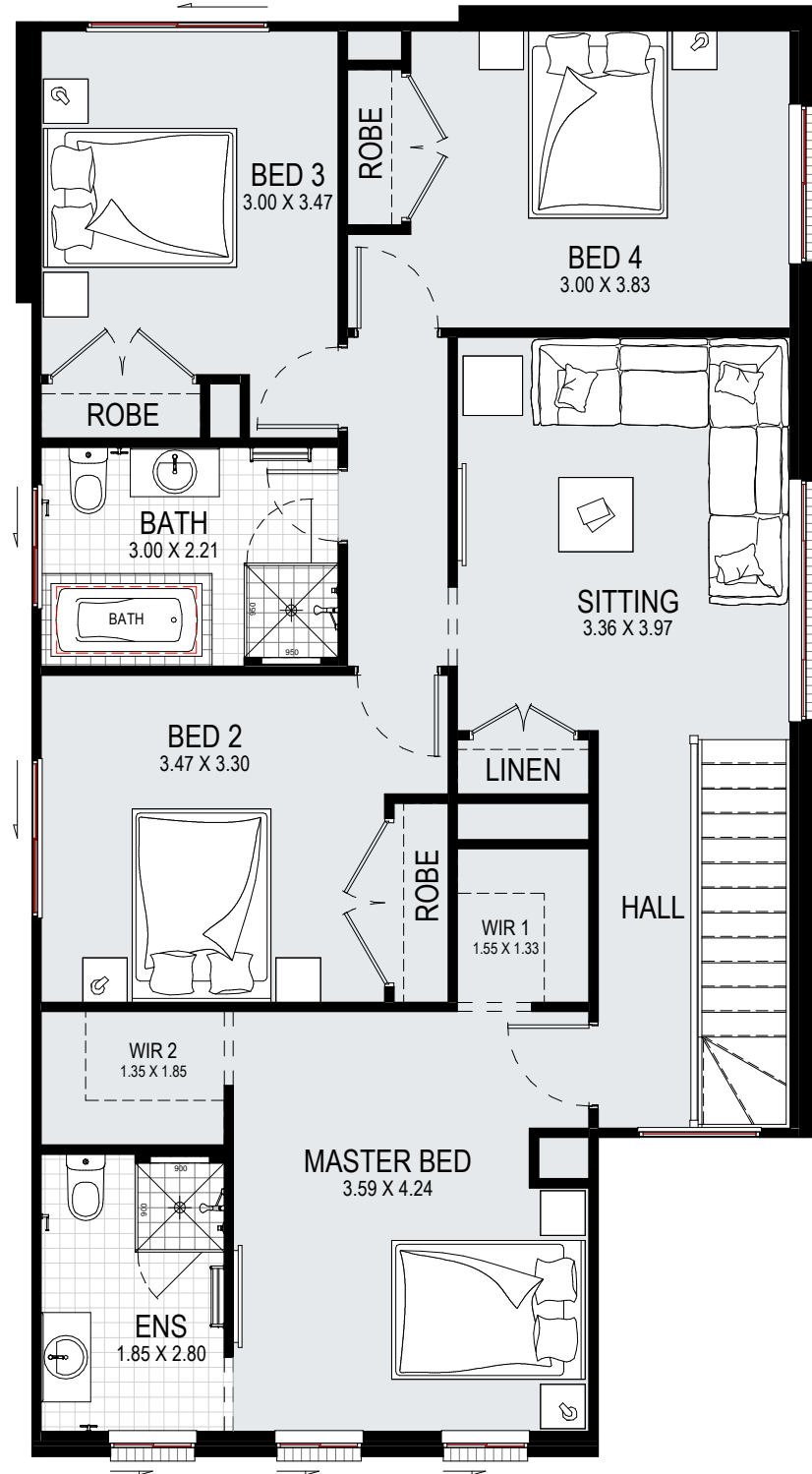




SUITABLE FOR:  
**10m + FRONTAGE**  
 SUITABLE FOR ZERO LOT BOUNDARY



**GROUND FLOOR PLAN**



**FIRST FLOOR PLAN**

**HUDSON 29**

**TRADITIONAL**

GROUND FLOOR	111.70 m <sup>2</sup>	12.02
FIRST FLOOR	104.64 m <sup>2</sup>	11.26
GARAGE	36.51 m <sup>2</sup>	3.93
PORCH	2.15 m <sup>2</sup>	0.23
ALFRESCO	12.11 m <sup>2</sup>	1.30
STAIR VOID	3.65 m <sup>2</sup>	0.39
<b>TOTAL</b>	<b>270.76 m<sup>2</sup></b>	<b>29.15</b>

TOTAL WIDTH: 8.99 m    TOTAL LENGTH: 20.39 m

**BROCHURE PLAN**

**kurmondhomes** PTY LTD  
 BUILDERS LICENCE: 205 457C    ABN: 481 288 211 98

10 Sovereign Place  
 South Windsor  
 NSW 2756.  
 T: 1300 764 761  
 F: (02) 4577 6332

**© COPYRIGHT**  
 ALL RIGHTS RESERVED. This plan is the property of KURMOND HOMES PTY LTD. Copyright in this documents is owned by KURMOND HOMES PTY LTD. Under the provisions of the Copyright ACT 1968 and is intended for use only as authorised by KURMOND HOMES PTY LTD.