



PREMIUM INCLUSIONS



Property ID: 19520

## EXISTING REAL ESTATE FOR SALE HOUSE

\$2,125,000 - \$2,175,000

29 Gittel Street, BOX HILL NSW 2765

### Homeworld Estate Box Hill

Corner Mount Carmel Drive and Copenhagen Street, BOX HILL NSW 2765

5 3 2

HOUSE SIZE: 441.41 M<sub>2</sub> | LAND SIZE: 450 M<sub>2</sub> | COMPLETION DATE: 21-11-2025

## PREMIUM INCLUSIONS

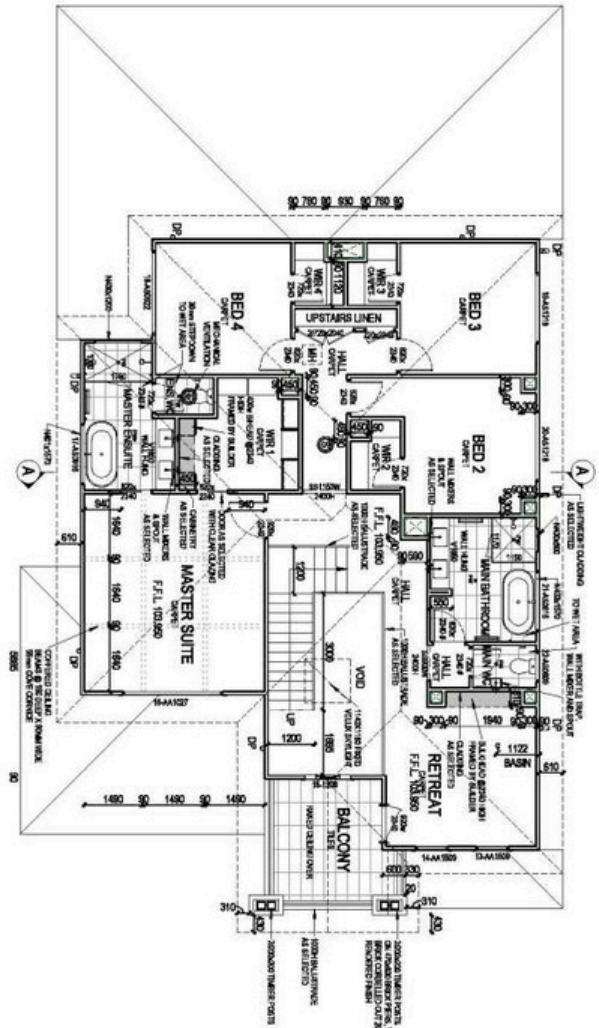
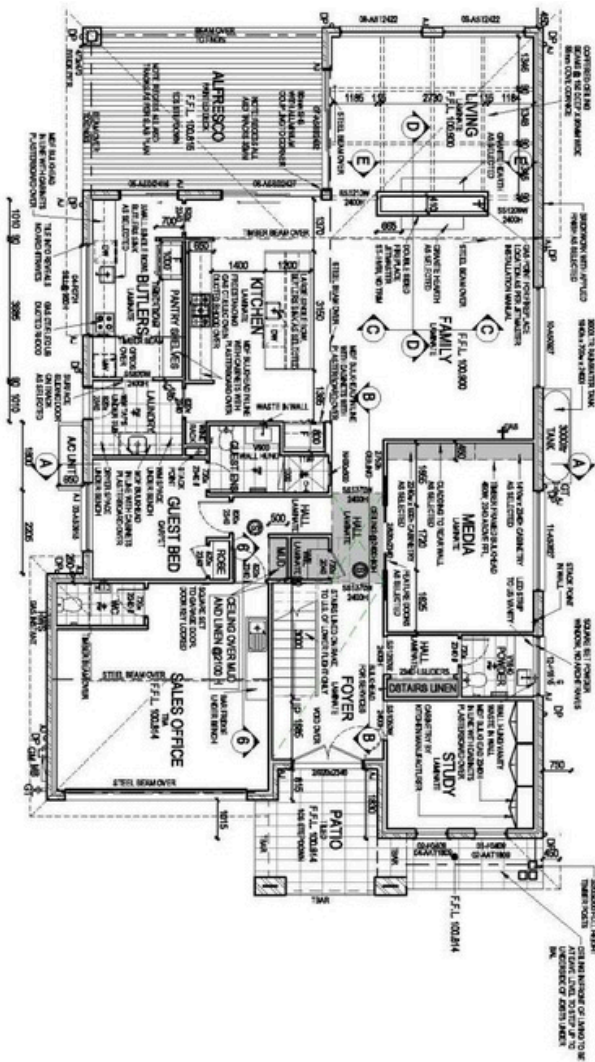
- ✓ 2.7 ceiling height
- ✓ 40mm stone benchtop
- ✓ Ducted Air conditioning
- ✓ 900 mm Kitchen appliances
- ✓ Fully fenced, turfed & landscaped
- ✓ Hamptons Façade
- ✓ Painted acrylic render to all brickwork sections
- ✓ Fixed-frameless shower screens
- ✓ Recessed shower niche
- ✓ Free Standing Bath
- ✓ Jetmaster double sided fireplace
- ✓ Square set wall-to-ceiling junction



www.letswork.com.au | 1300 007 244 | hello@letswork.com.au

LETSWORK™

LAND SIZE: 450 m<sup>2</sup> | HOUSE SIZE: 441.41 m<sup>2</sup>



DISCLAIMER

Terms and conditions apply. Images for illustrative purposes only. Letswork reserves the right to change the price without notice. E&O.Letswork Real Estate Corporation License Number:10030393