

# Sheraton Four Guest 36

with Hampton 5 façade

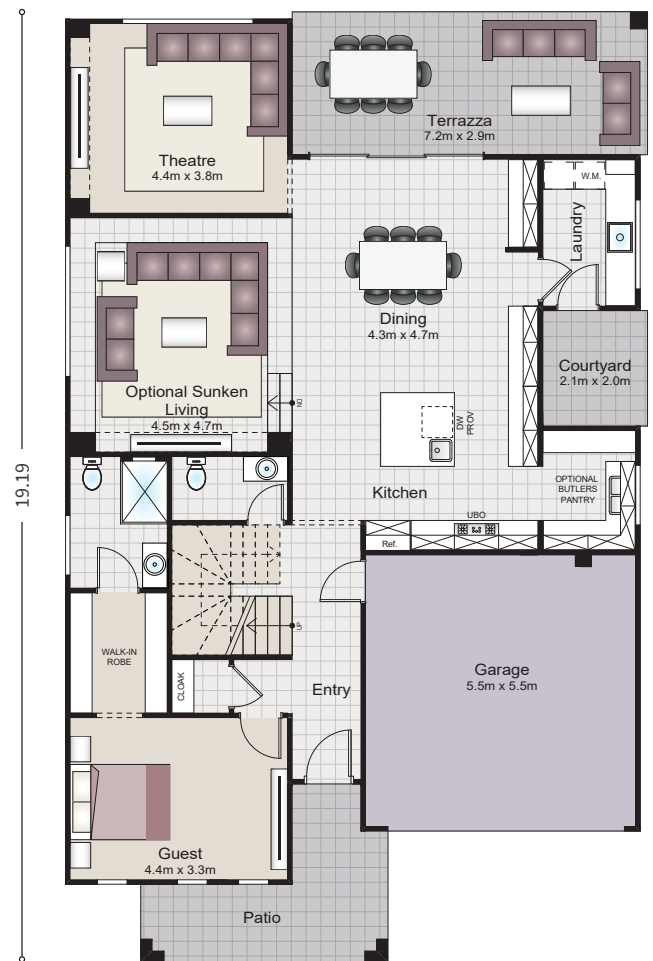
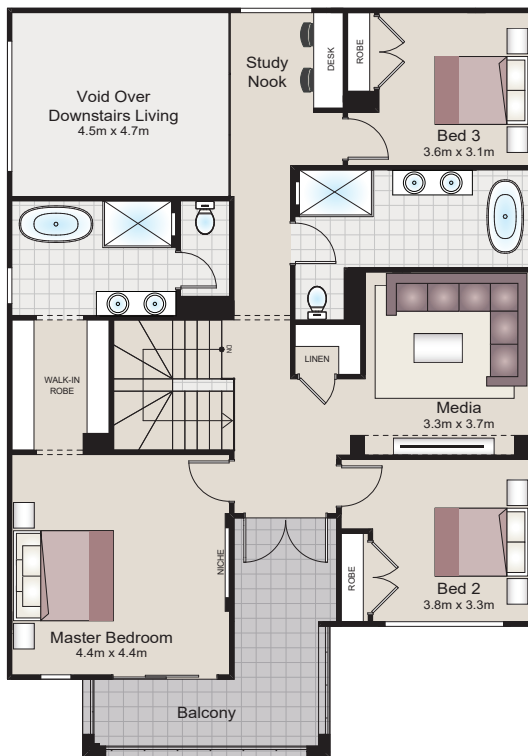


SUITS 28m DEEP LOTS

## HOME SUITS 14.5m WIDE LOTS

Home width:	11.69m
Home length:	19.19m
Ground Floor Living:	150.04m <sup>2</sup>
First Floor Living:	111.72m <sup>2</sup>
Terrazza & Courtyard:	23.60m <sup>2</sup>
Garage:	32.77m <sup>2</sup>
Patio:	10.34m <sup>2</sup>
Balcony:	12.16m <sup>2</sup>
<b>Total:</b>	<b>340.63m<sup>2</sup></b>

You will fall in love with the **Sheraton** and its touches of opulence including the optional sunken living area with void over, immense kitchen, laundry with drying courtyard and terrazza perfect for entertaining. Featuring two master suites, the **Sheraton** is perfect for multi-generation living or older families alike.



Sheraton

On Display



Classic 1



Classic 2

