



LETSWORK 183D DESIGN STANDARD FACADE LETSWORK

4 3 1 458sqm 184sqm

LOT 301 Rickard Rd
Leppington NSW
2179

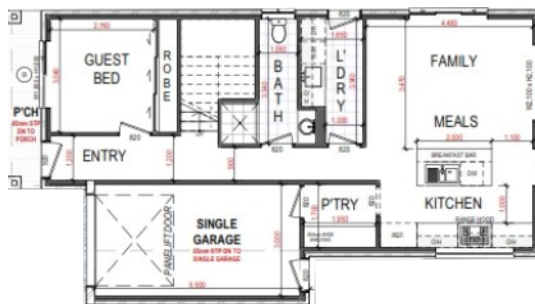
Priced from

\$375,000-\$425,000

- ✓ 2.6 Ceiling Height
- ✓ 2x Split Air Conditioning
- ✓ 600 x 600 porcelain floor tiles throughout
- ✓ Modern door handle with digital entry lock
- ✓ Chrome fixtures & fittings throughout
- ✓ Engineered stone benchtops to kitchen
- ✓ Modern kitchen feature pendant lights
- ✓ 600mm electric kitchen appliance package
- ✓ Double undermount stainless sink
- ✓ Feature tile splashback to kitchen & laundry
- ✓ 2-toned Polytec kitchen cabinetry

Priced from

Garage	18.88sqm
Porch	4.33sqm
Size Ground Floor	75.18sqm
Size First Floor	85.20sqm
Total Area	20sq (184sqm)



Ground Floor



First Floor