

FLOOR AREA

LIVING = 152.8 m2
 GARAGE = 38.0 m2
 PORCH = 1.1 m2
 PATIO = 7.6 m2
 TOTAL = 199.5 m2
 SOFFIT = 27.3 m2

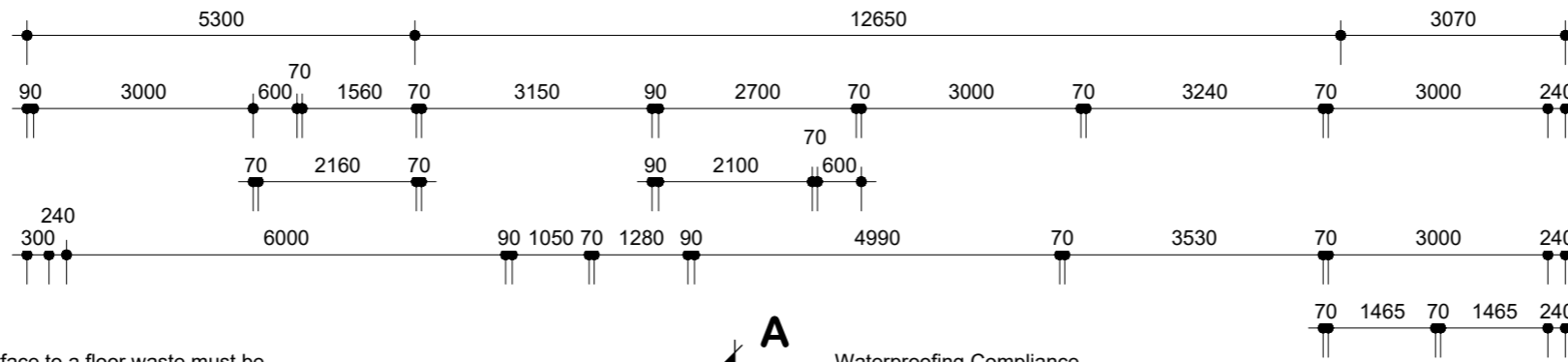
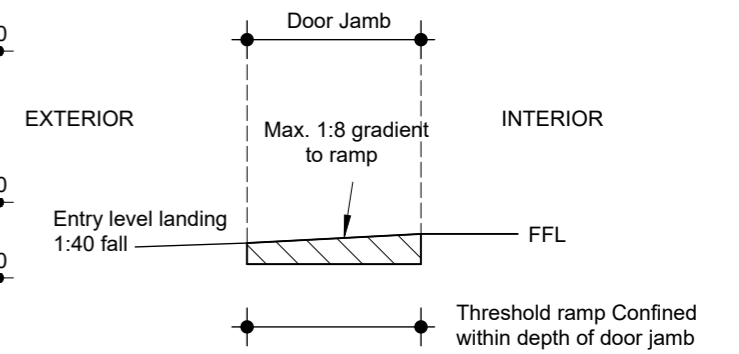
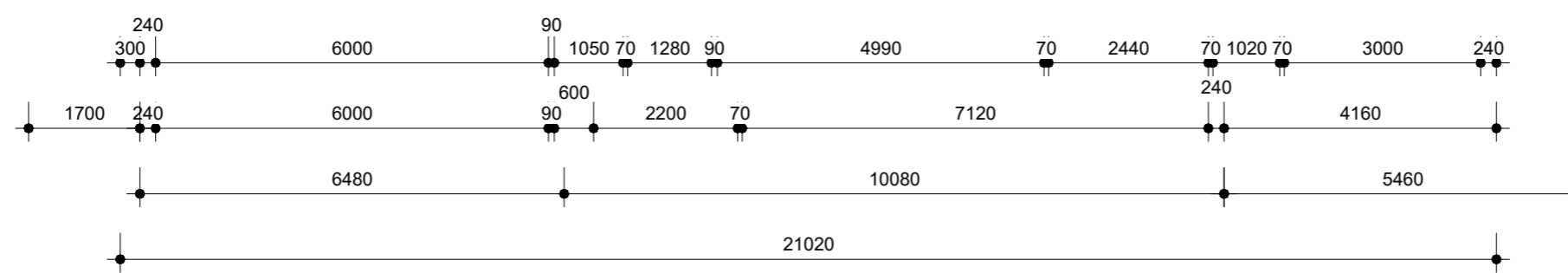
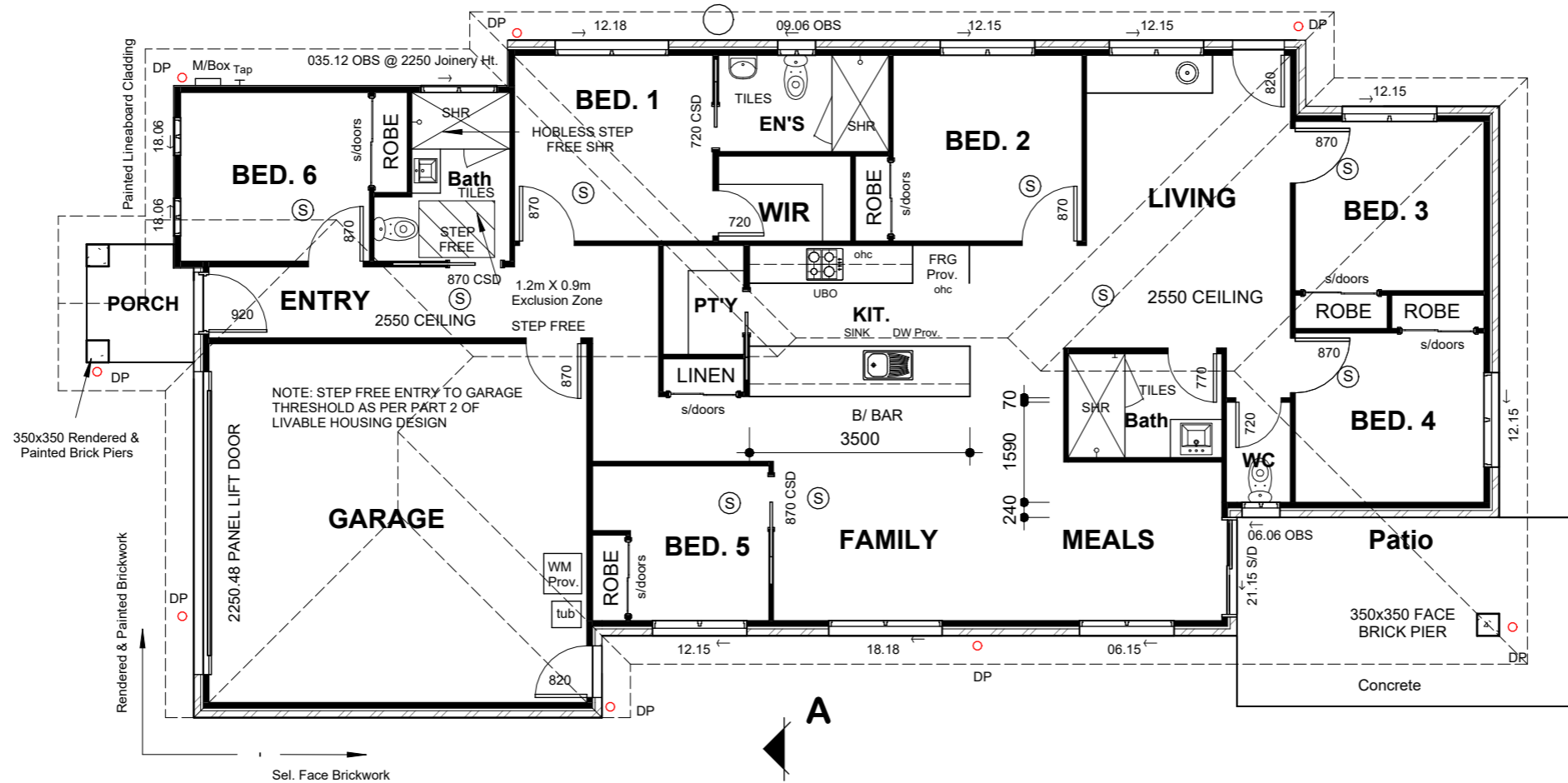
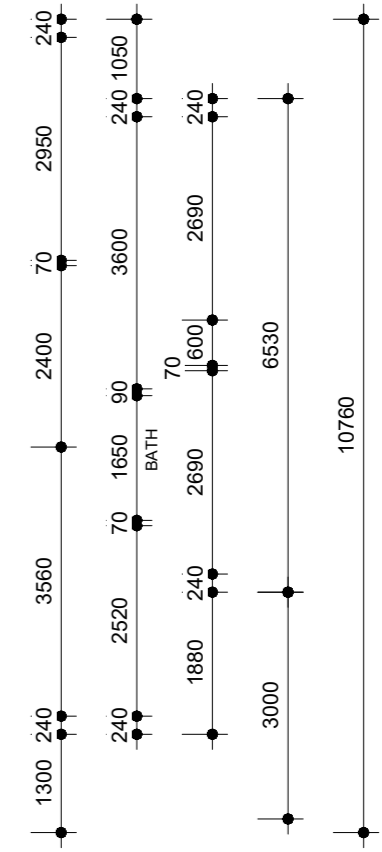
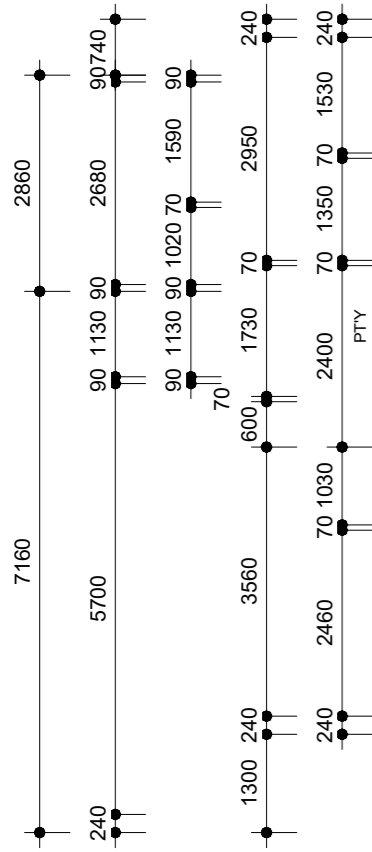


Figure 4.4 Option 3: Threshold ramp (Confined within depth of door jamb)



The fall of the floor surface to a floor waste must be:
 a- between 1:50 and 1:80 in the shower area
 b- between 1:80 and 1:100 in other areas

Waterproofing Compliance
 as per ABCB Housing Provisions, Section 10.2



W33 N2

ALL SMOKE ALARMS TO BE INTERCONNECTED.
 SMOKE ALARMS TO BE PHOTOELECTRIC TYPE IN
 ACCORDANCE WITH NCC 2022 PART 9.5 & AS 3786

DOWNPIPE LOCATIONS ARE
 APPROXIMATE ONLY.
 PLUMBER TO CONFIRM LOCATION
 BEFORE CONSTRUCTION

REVISION SCHEDULE	
A Draft Plans	4/4/2025

FLOOR PLAN

1:100

Draft Plans 4/4/2025



MOB: 0432 034 543
 Email: hello@letswork.com.au
 100 Harris Street, Pyrmont NSW 2009

All rights reserved under the "Copyright" act, no part may be used, reproduced or copied in any form other than for the specific use on the site for which it has been prepared for, or without written permission of Letswork

Proposed New Dwelling

DWG No.
25/342
 DATE: April 2025