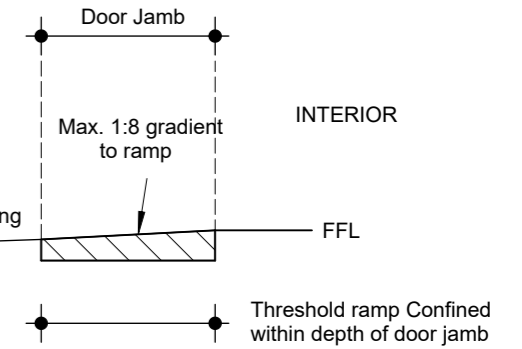
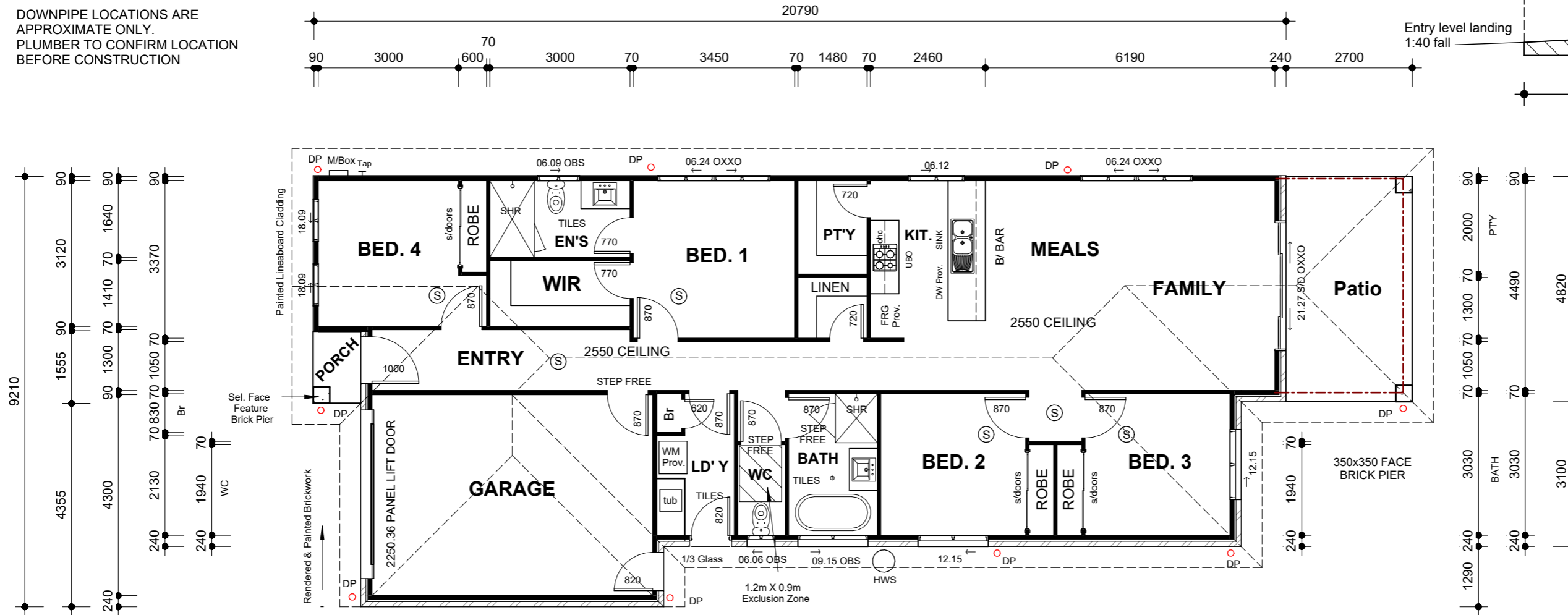


Figure 4.4 Option 3: Threshold ramp ( Confined within depth of door jamb )



ALL SMOKE ALARMS TO BE HARDWIRED & INTERCONNECTED.  
SMOKE ALARMS TO BE PHOTOELECTRIC TYPE IN ACCORDANCE WITH NCC 2022 PART 9.5 & AS 3786

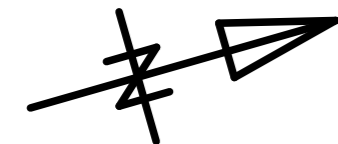
DOWNSPIPE LOCATIONS ARE APPROXIMATE ONLY.  
PLUMBER TO CONFIRM LOCATION BEFORE CONSTRUCTION



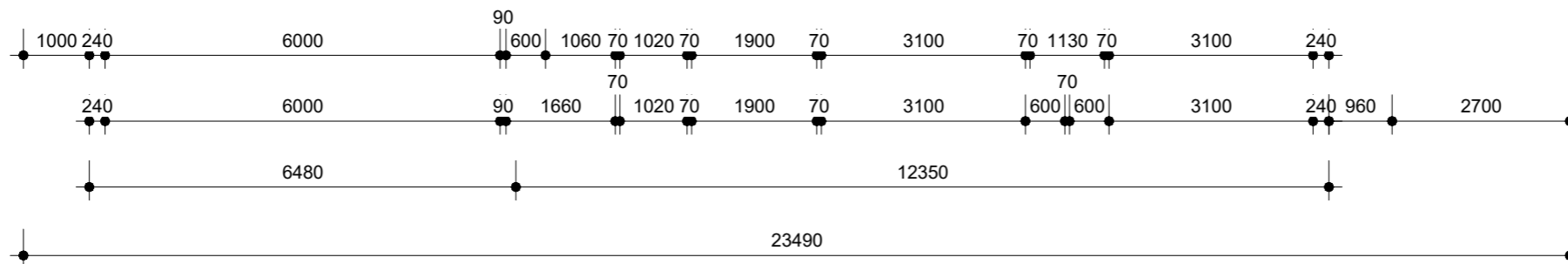
NOTE: STEP FREE ENTRY TO GARAGE THRESHOLD AS PER PART 2 OF LIVABLE HOUSING DESIGN

Waterproofing Compliance as per ABCB Housing Provisions, Section 10.2

The fall of the floor surface to a floor waste must be:  
a- between 1:60 and 1:80 in the shower area  
b- between 1:80 and 1:100 in other areas



W33 N2



# FLOOR PLAN

1:100

REVISION SCHEDULE	
A Preliminary Plans	4/10/2024

Preliminary Plans 4/10/2024



MOB: 0432 034 543  
Email: hello@letswork.com.au  
100 Harris Street, Pyrmont NSW 2009

All rights reserved under the "Copyright" act, no part may be used, reproduced or copied in any form other than for the specific use on the site for which it has been prepared for, or without written permission of Letswork

Proposed New Dwelling

DWG No.  
**24/761**  
DATE: Oct. 2024