

# THE ESTABLISHMENT



## FLOOR PLAN - BASEMENT 03

BLOCK 4 & 5, SECTION 224, GUNGAHLIN

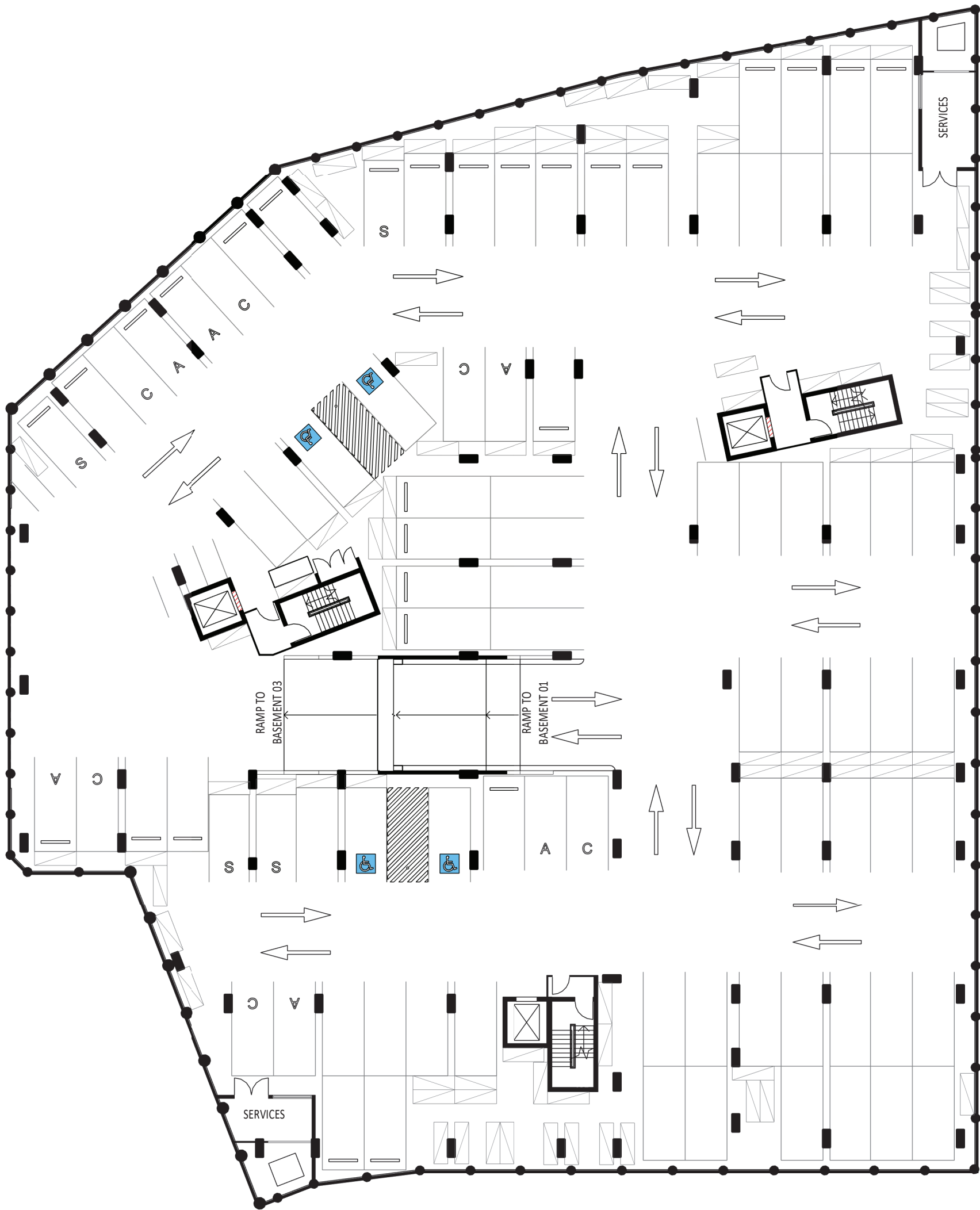
DRAWING No	DRAWING TITLE	REV	DATE:	SCALE BAR:
M-0100	FLOOR PLAN - BASEMENT 03	D	24.05.2021	0 1 2 5 10

**empire | GEOCON**

DW - DISHWASHER F - FRIDGE SPACE LDYR - LAUNDRY P - PANTRY R - ROBE ST - STORAGE

The plans and depictions in this document: (a) should be used as a guide only; (b) are believed to be correct at the time of printing; (c) were prepared prior to finalization of design and engineering drawings which are subject to ongoing change; (d) show dimensions of area and scale of floor plans that are approximate; (e) may include graphics of tiling, paver layout, balustrades, landscaping, fencing, louvers, screens, service equipment, and shade devices that are indicative only; and (f) are not guaranteed to be prepared to scale or to accurately reflect the plans in the contract of sale or the building as constructed. Gross floor area calculations are taken from the exterior face of end walls, the centerline of party walls and the exterior face of common area walls. Depictions of furnishings and floor coverings, and fittings are not shown to scale, nor included in the sale transaction for the indicated price or at all unless expressly included in the contract. Inclusion options may be but are not necessarily shown. Location of power points, television or internet connection points and the like are indicative only. Bulkheads for services may not be depicted. Depictions of columns, bulkheads and other structural elements may vary in dimension and location throughout the building when constructed. Level changes in common areas may not have been shown. You should read the terms in the contract and the plans contained therein and seek appropriately qualified professional advice to understand your rights and obligations. Design changes to the development will be notified in accordance with the terms of the contract and requirements of the Civil Law (Property) Act.

# THE ESTABLISHMENT



## FLOOR PLAN - BASEMENT 02

BLOCK 4 & 5, SECTION 224, GUNGAHLIN

DRAWING No M-0101  
DRAWING TITLE FLOOR PLAN - BASEMENT 02

REV D  
DATE: 24.05.2021

SCALE BAR:  
0 1 2 5 10

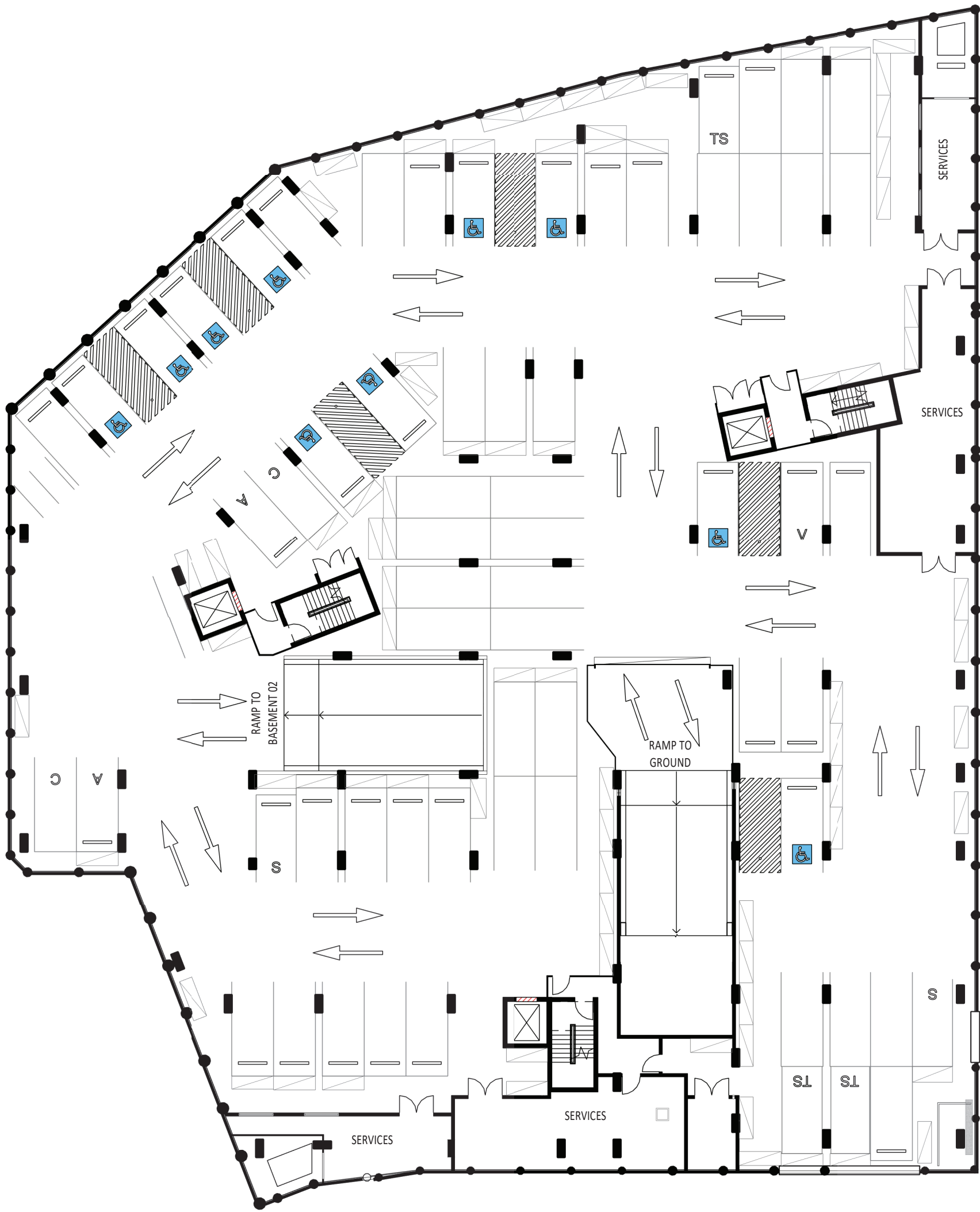


**empire | GEOCON**

The plans and depictions in this document: (a) should be used as a guide only; (b) are believed to be correct at the time of printing; (c) were prepared prior to finalization of design and engineering drawings which are subject to ongoing change; (d) show dimensions of area and scale of floor plans that are approximate; (e) may include graphics of tiling, paver layout, balustrades, landscaping, fencing, louvers, screens, service equipment, and shade devices that are indicative only; and (f) are not guaranteed to be prepared to scale or to accurately reflect the plans in the contract of sale or the building as constructed. Gross floor area calculations are taken from the exterior face of end walls, the centerline of party walls and the exterior face of common area walls. Depictions of furnishings and floor coverings, and fittings are not shown to scale, nor included in the sale transaction for the indicated price or at all unless expressly included in the contract. Inclusion options may be but are not necessarily shown. Location of power points, television or internet connection points and the like are indicative only. Bulkheads for services may not be depicted. Depictions of columns, bulkheads and other structural elements may vary in dimension and location throughout the building when constructed. Level changes in common areas may not have been shown. You should read the terms in the contract and the plans contained therein and seek appropriately qualified professional advice to understand your rights and obligations. Design changes to the development will be notified in accordance with the terms of the contract and requirements of the Civil Law (Property) Act.

DW - DISHWASHER F - FRIDGE SPACE LDY - LAUNDRY P - PANTRY R - ROBE ST - STORAGE

# THE ESTABLISHMENT



## FLOOR PLAN - BASEMENT 01

BLOCK 4 & 5, SECTION 224, GUNGAHLIN

DRAWING No M-0102 DRAWING TITLE FLOOR PLAN - BASEMENT 01

REV D DATE: 24.05.2021

SCALE BAR: 0 1 2 5 10

**empire | GEOCON**

DW - DISHWASHER F - FRIDGE SPACE LDY - LAUNDRY P - PANTRY R - ROBE ST - STORAGE

The plans and depictions in this document: (a) should be used as a guide only; (b) are believed to be correct at the time of printing; (c) were prepared prior to finalization of design and engineering drawings which are subject to ongoing change; (d) show dimensions of area and scale of floor plans that are approximate; (e) may include graphics of tiling, paver layout, balustrades, landscaping, fencing, louvers, screens, service equipment, and shade devices that are indicative only; and (f) are not guaranteed to be prepared to scale or to accurately reflect the plans in the contract of sale or the building as constructed. Gross floor area calculations are taken from the exterior face of end walls, the centerline of party walls and the exterior face of common area walls. Depictions of furnishings and floor coverings, and fittings are not shown to scale, nor included in the sale transaction for the indicated price or at all unless expressly included in the contract. Inclusion options may be but are not necessarily shown. Location of power points, television or internet connection points and the like are indicative only. Bulkheads for services may not be depicted. Depictions of columns, bulkheads and other structural elements may vary in dimension and location throughout the building when constructed. Level changes in common areas may not have been shown. You should read the terms in the contract and the plans contained therein and seek appropriately qualified professional advice to understand your rights and obligations. Design changes to the development will be notified in accordance with the terms of the contract and requirements of the Civil Law (Property) Act.

# THE ESTABLISHMENT



## FLOOR PLAN - GROUND

BLOCK 4 & 5, SECTION 224, GUNGAHLIN

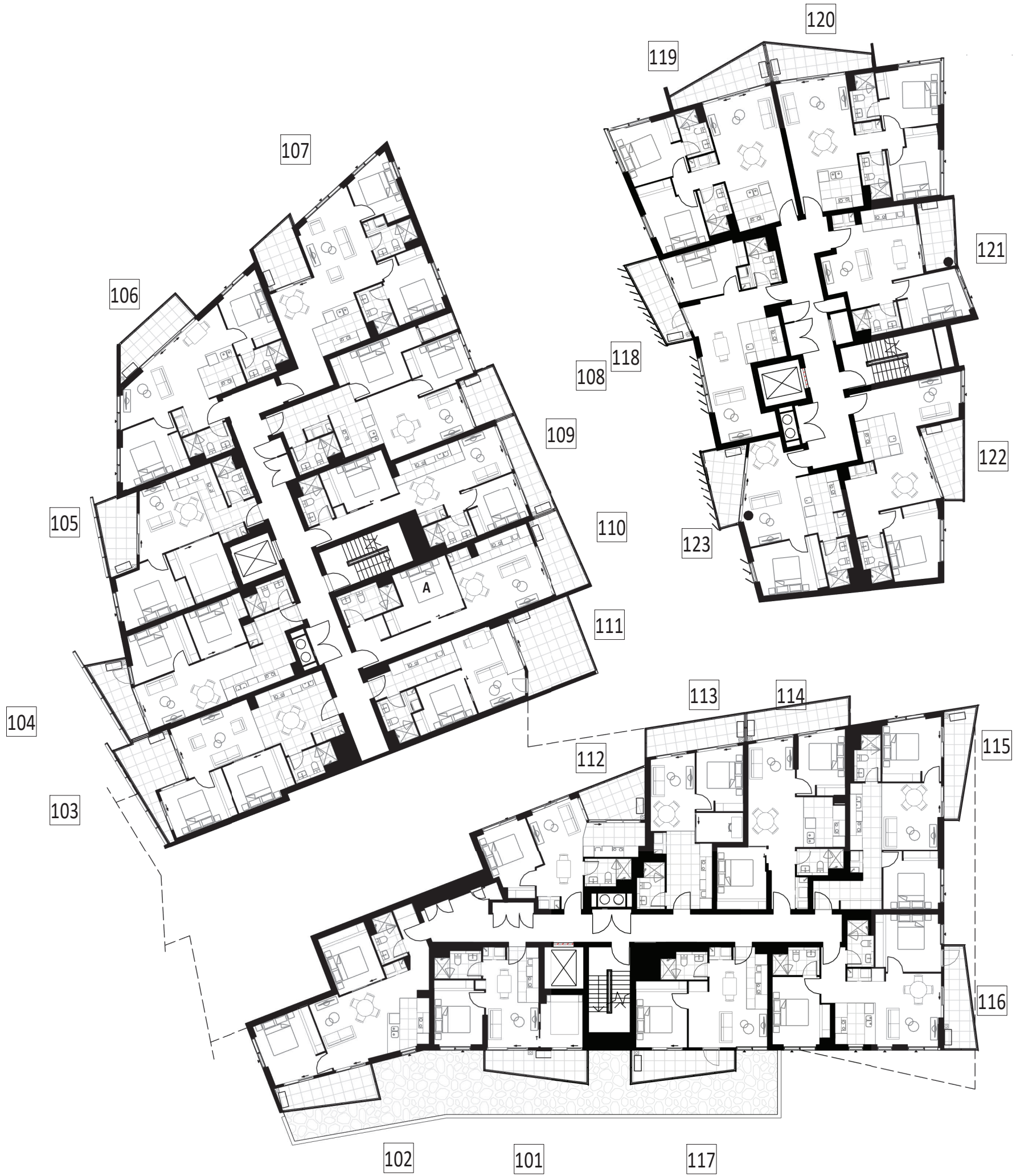
DRAWING No	DRAWING TITLE	REV	DATE	SCALE BAR:
M-0103	FLOOR PLAN - GROUND	D	24.05.2021	0 1 2 5 10

**empire | GEOCON**

The plans and depictions in this document: (a) should be used as a guide only; (b) are believed to be correct at the time of printing; (c) were prepared prior to finalization of design and engineering drawings which are subject to ongoing change; (d) show dimensions of area and scale of floor plans that are approximate; (e) may include graphics of tiling, paver layout, balustrades, landscaping, fencing, louvers, screens, service equipment, and shade devices that are indicative only; and (f) are not guaranteed to be prepared to scale or to accurately reflect the plans in the contract of sale or the building as constructed. Gross floor area calculations are taken from the exterior face of end walls, the centerline of party walls and the exterior face of common area walls. Depictions of furnishings and floor coverings, and fittings are not shown to scale, nor included in the sale transaction for the indicated price or at all unless expressly included in the contract. Inclusion options may be but are not necessarily shown. Location of power points, television or internet connection points and the like are indicative only. Bulkheads for services may not be depicted. Depictions of columns, bulkheads and other structural elements may vary in dimension and location throughout the building when constructed. Level changes in common areas may not have been shown. You should read the terms in the contract and the plans contained therein and seek appropriately qualified professional advice to understand your rights and obligations. Design changes to the development will be notified in accordance with the terms of the contract and requirements of the Civil Law (Property) Act.

DW - DISHWASHER F - FRIDGE SPACE LDRY - LAUNDRY P - PANTRY R - ROBE ST - STORAGE

# THE ESTABLISHMENT



## FLOOR PLAN - LEVEL 01

BLOCK 4 & 5, SECTION 224, GUNGAHLIN

DRAWING No DRAWING TITLE

M-0104 FLOOR PLAN - LEVEL 01

REV

C

DATE:

24.05.2021

SCALE BAR:

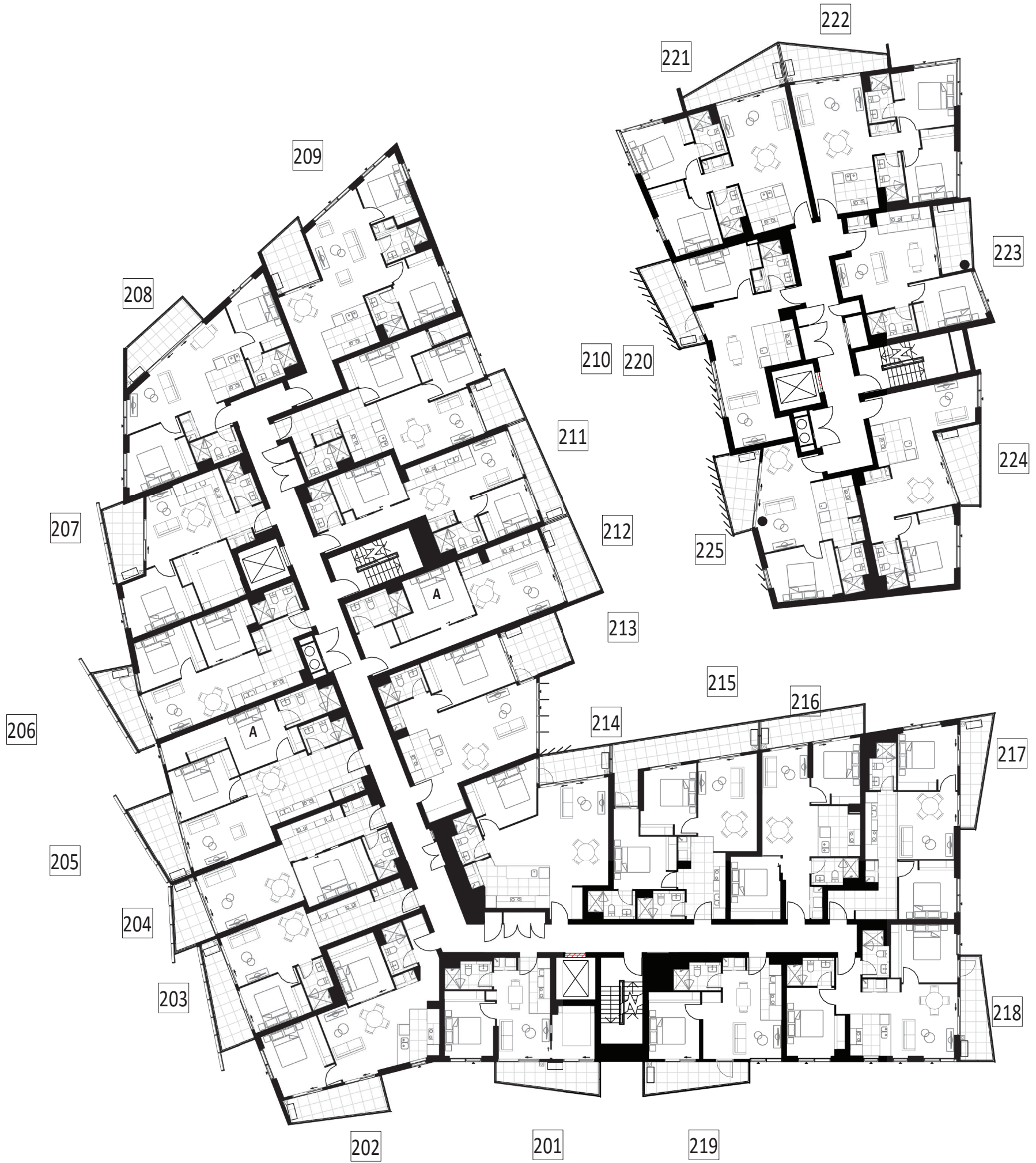


**empire | GEOCON**

The plans and depictions in this document: (a) should be used as a guide only; (b) are believed to be correct at the time of printing; (c) were prepared prior to finalization of design and engineering drawings which are subject to ongoing change; (d) show dimensions of area and scale of floor plans that are approximate; (e) may include graphics of tiling, paver layout, balustrades, landscaping, fencing, louvers, screens, service equipment, and shade devices that are indicative only; and (f) are not guaranteed to be prepared to scale or to accurately reflect the plans in the contract of sale or the building as constructed. Gross floor area calculations are taken from the exterior face of end walls, the centerline of party walls and the exterior face of common area walls. Depictions of furnishings and floor coverings, and fittings are not shown to scale, nor included in the sale transaction for the indicated price or at all unless expressly included in the contract. Inclusion options may be but are not necessarily shown. Location of power points, television or internet connection points and the like are indicative only. Bulkheads for services may not be depicted. Depictions of columns, bulkheads and other structural elements may vary in dimension and location throughout the building when constructed. Level changes in common areas may not have been shown. You should read the terms in the contract and the plans contained therein and seek appropriately qualified professional advice to understand your rights and obligations. Design changes to the development will be notified in accordance with the terms of the contract and requirements of the Civil Law (Property) Act.

DW - DISHWASHER F - FRIDGE SPACE LDRY - LAUNDRY P - PANTRY R - ROBE ST - STORAGE

# THE ESTABLISHMENT



## FLOOR PLAN - LEVEL 02

BLOCK 4 & 5, SECTION 224, GUNGAHLIN

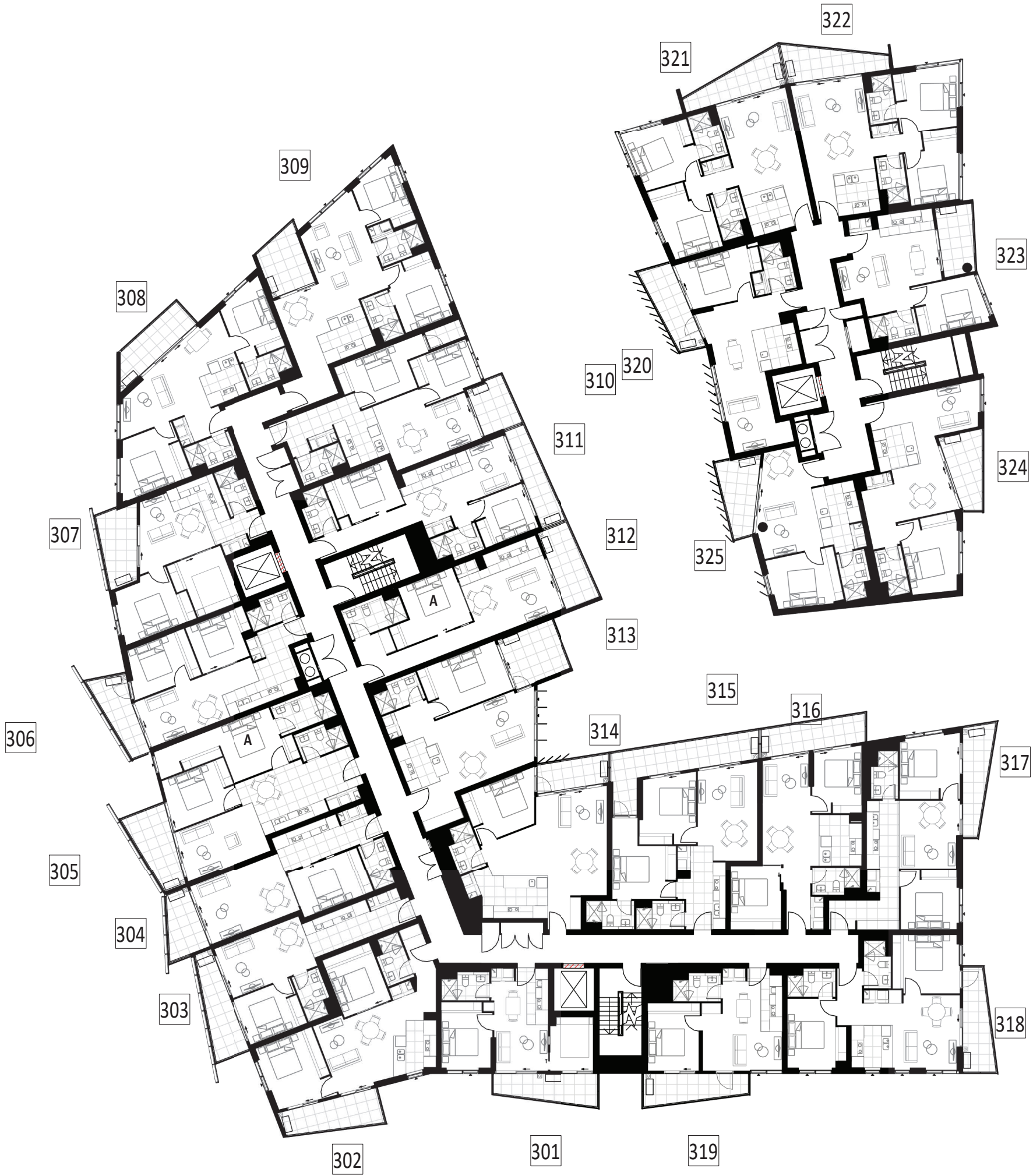
DRAWING No	DRAWING TITLE	REV	DATE:	SCALE BAR:
M-0105	FLOOR PLAN - LEVEL 02	C	24.05.2021	0 1 2 5 10

**empire | GEOCON**

DW - DISHWASHER F - FRIDGE SPACE LDRY - LAUNDRY P - PANTRY R - ROBE ST - STORAGE

The plans and depictions in this document: (a) should be used as a guide only; (b) are believed to be correct at the time of printing; (c) were prepared prior to finalization of design and engineering drawings which are subject to ongoing change; (d) show dimensions of area and scale of floor plans that are approximate; (e) may include graphics of tiling, paver layout, balustrades, landscaping, fencing, louvers, screens, service equipment, and shade devices that are indicative only; and (f) are not guaranteed to be prepared to scale or to accurately reflect the plans in the contract of sale or the building as constructed. Gross floor area calculations are taken from the exterior face of end walls, the centerline of party walls and the exterior face of common area walls. Depictions of furnishings and floor coverings, and fittings are not shown to scale, nor included in the sale transaction for the indicated price or at all unless expressly included in the contract. Inclusion options may be but are not necessarily shown. Location of power points, television or internet connection points and the like are indicative only. Bulkheads for services may not be depicted. Depictions of columns, bulkheads and other structural elements may vary in dimension and location throughout the building when constructed. Level changes in common areas may not have been shown. You should read the terms in the contract and the plans contained therein and seek appropriately qualified professional advice to understand your rights and obligations. Design changes to the development will be notified in accordance with the terms of the contract and requirements of the Civil Law (Property) Act.

# THE ESTABLISHMENT



## FLOOR PLAN - LEVEL 03

BLOCK 4 & 5, SECTION 224, GUNGAHLIN

DRAWING No DRAWING TITLE

M-0106 FLOOR PLAN - LEVEL 03

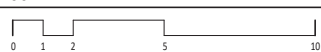
REV

C

DATE:

24.05.2021

SCALE BAR:

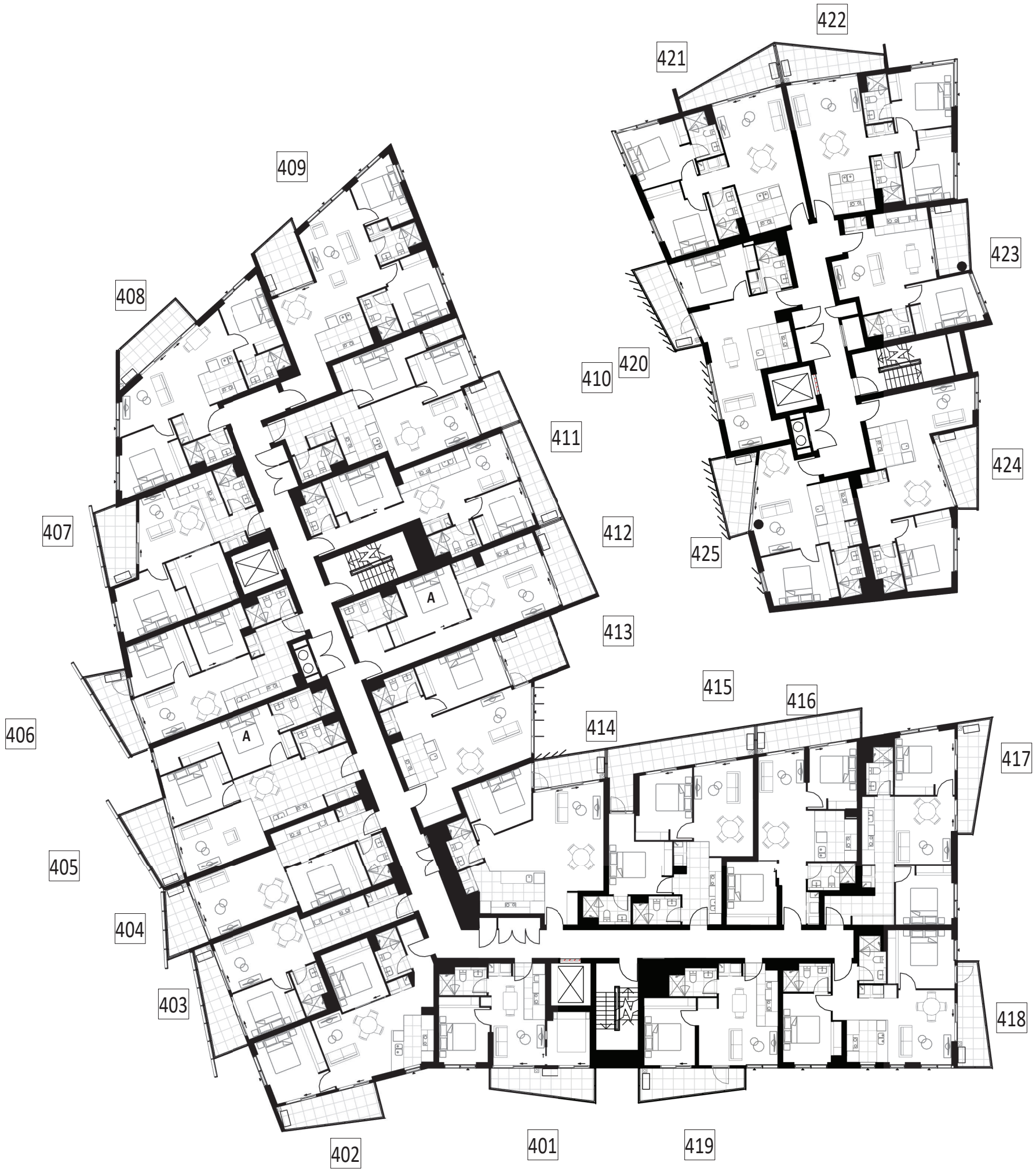


**empire | GEOCON**

The plans and depictions in this document: (a) should be used as a guide only; (b) are believed to be correct at the time of printing; (c) were prepared prior to finalization of design and engineering drawings which are subject to ongoing change; (d) show dimensions of area and scale of floor plans that are approximate; (e) may include graphics of tiling, paver layout, balustrades, landscaping, fencing, louvers, screens, service equipment, and shade devices that are indicative only; and (f) are not guaranteed to be prepared to scale or to accurately reflect the plans in the contract of sale or the building as constructed. Gross floor area calculations are taken from the exterior face of end walls, the centerline of party walls and the exterior face of common area walls. Depictions of furnishings and floor coverings, and fittings are not shown to scale, nor included in the sale transaction for the indicated price or at all unless expressly included in the contract. Inclusion options may be but are not necessarily shown. Location of power points, television or internet connection points and the like are indicative only. Bulkheads for services may not be depicted. Depictions of columns, bulkheads and other structural elements may vary in dimension and location throughout the building when constructed. Level changes in common areas may not have been shown. You should read the terms in the contract and the plans contained therein and seek appropriately qualified professional advice to understand your rights and obligations. Design changes to the development will be notified in accordance with the terms of the contract and requirements of the Civil Law (Property) Act.

DW - DISHWASHER F - FRIDGE SPACE LDRY - LAUNDRY P - PANTRY R - ROBE ST - STORAGE

# THE ESTABLISHMENT



## FLOOR PLAN - LEVEL 04

BLOCK 4 & 5, SECTION 224, GUNGAHLIN

DRAWING No DRAWING TITLE

M-0107 FLOOR PLAN - LEVEL 04

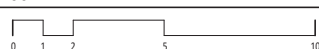
REV

C

DATE:

24.05.2021

SCALE BAR:



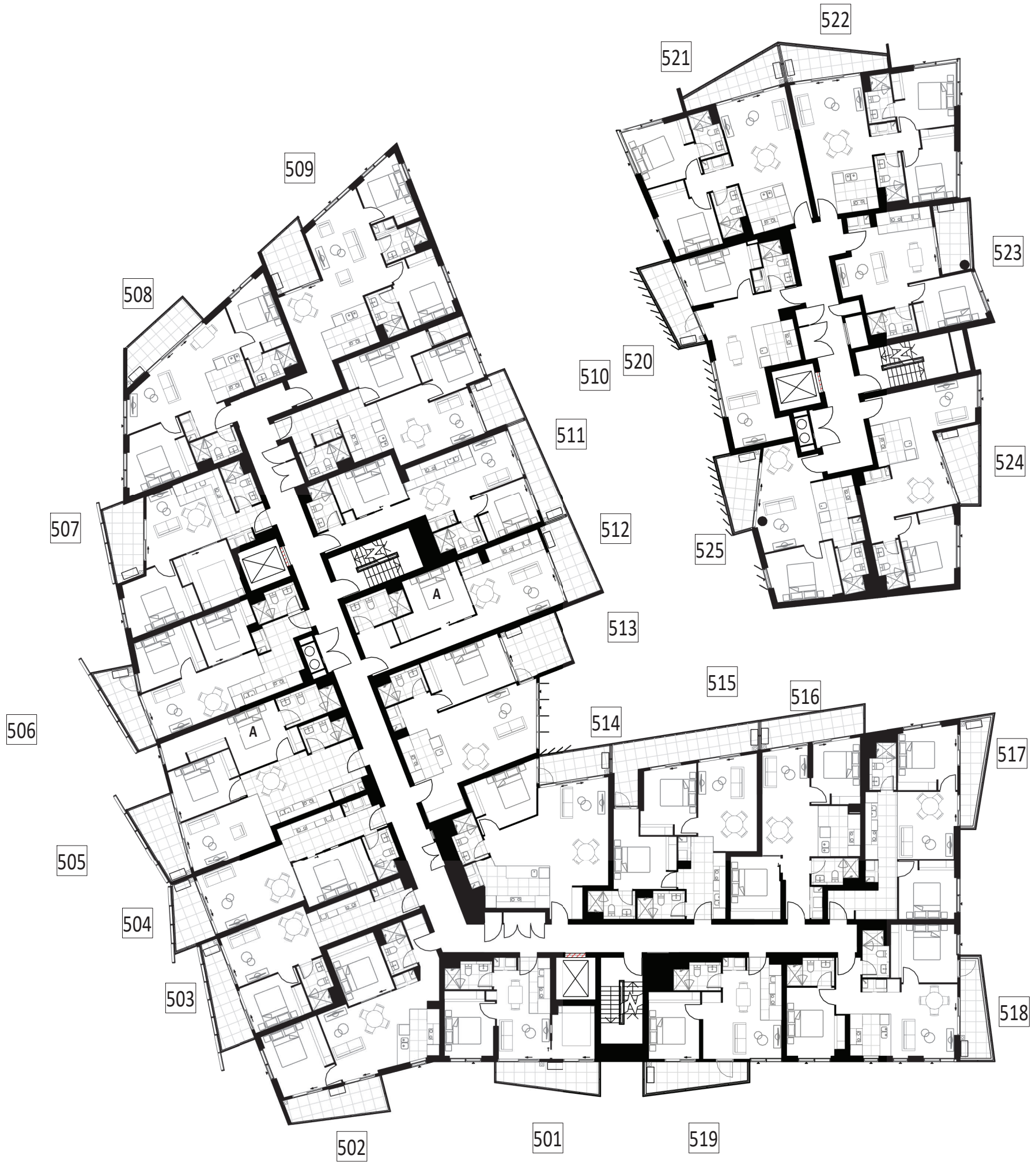
**empire | GEOCON**

The plans and depictions in this document: (a) should be used as a guide only; (b) are believed to be correct at the time of printing; (c) were prepared prior to finalization of design and engineering drawings which are subject to ongoing change; (d) show dimensions of area and scale of floor plans that are approximate; (e) may include graphics of tiling, paver layout, balustrades, landscaping, fencing, louvers, screens, service equipment, and shade devices that are indicative only; and (f) are not guaranteed to be prepared to scale or to accurately reflect the plans in the contract of sale or the building as constructed. Gross floor area calculations are taken from the exterior face of end walls, the centerline of party walls and the exterior face of common area walls. Depictions of furnishings and floor coverings, and fittings are not shown to scale, nor included in the sale transaction for the indicated price or at all unless expressly included in the contract. Inclusion options may be but are not necessarily shown. Location of power points, television or internet connection points and the like are indicative only. Bulkheads for services may not be depicted. Depictions of columns, bulkheads and other structural elements may vary in dimension and location throughout the building when constructed. Level changes in common areas may not have been shown. You should read the terms in the contract and the plans contained therein and seek appropriately qualified professional advice to understand your rights and obligations. Design changes to the development will be notified in accordance with the terms of the contract and requirements of the Civil Law (Property) Act.

DW - DISHWASHER F - FRIDGE SPACE LDRY - LAUNDRY P - PANTRY R - ROBE ST - STORAGE



# THE ESTABLISHMENT



## FLOOR PLAN - LEVEL 05

BLOCK 4 & 5, SECTION 224, GUNGAHLIN

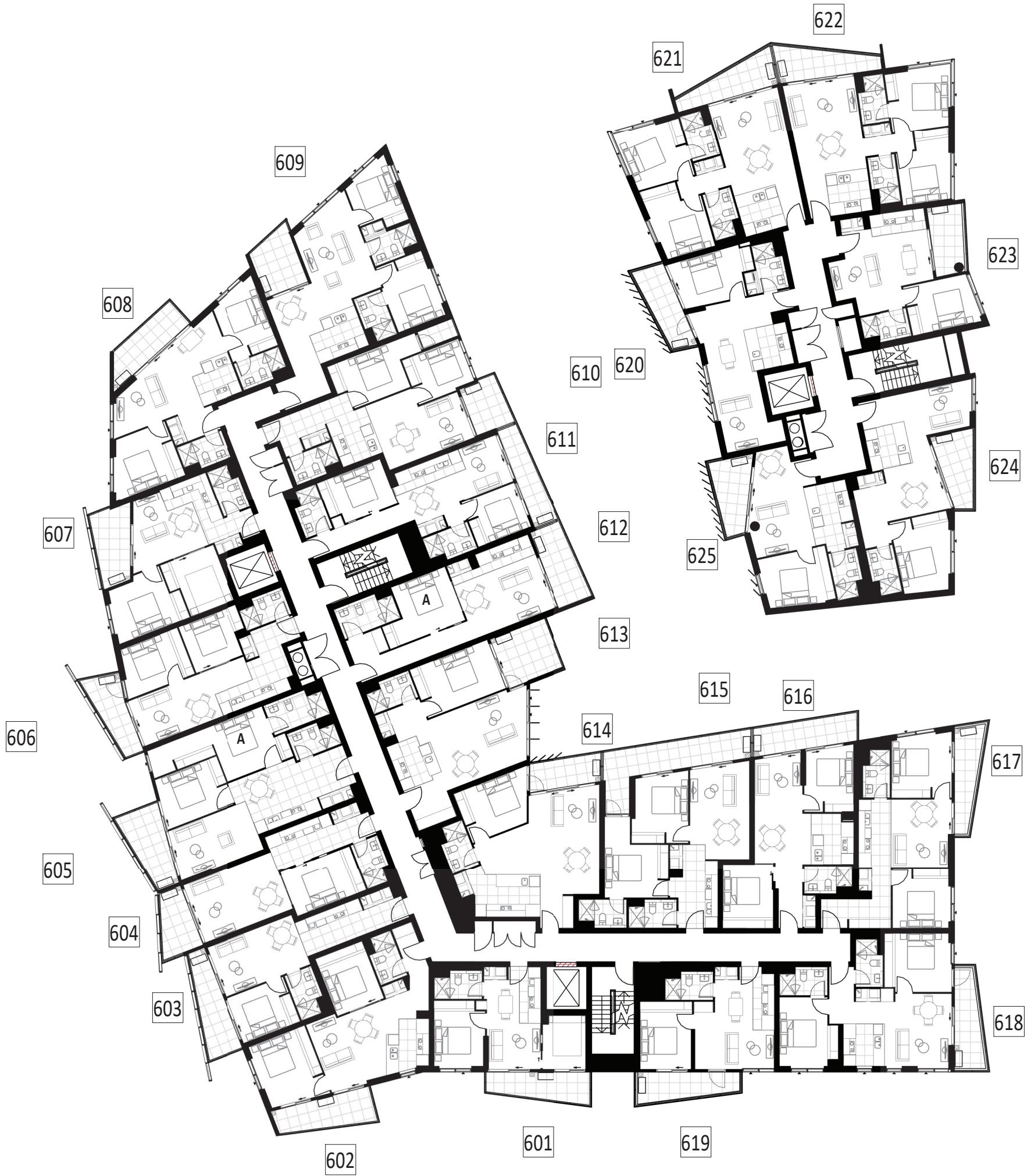
DRAWING No	DRAWING TITLE	REV	DATE:	SCALE BAR:
M-0108	FLOOR PLAN - LEVEL 05	C	24.05.2021	0 1 2 5 10

**empire | GEOCON**

DW - DISHWASHER F - FRIDGE SPACE LDRY - LAUNDRY P - PANTRY R - ROBE ST - STORAGE

The plans and depictions in this document: (a) should be used as a guide only; (b) are believed to be correct at the time of printing; (c) were prepared prior to finalization of design and engineering drawings which are subject to ongoing change; (d) show dimensions of area and scale of floor plans that are approximate; (e) may include graphics of tiling, paver layout, balustrades, landscaping, fencing, louvers, screens, service equipment, and shade devices that are indicative only; and (f) are not guaranteed to be prepared to scale or to accurately reflect the plans in the contract of sale or the building as constructed. Gross floor area calculations are taken from the exterior face of end walls, the centerline of party walls and the exterior face of common area walls. Depictions of furnishings and floor coverings, and fittings are not shown to scale, nor included in the sale transaction for the indicated price or at all unless expressly included in the contract. Inclusion options may be but are not necessarily shown. Location of power points, television or internet connection points and the like are indicative only. Bulkheads for services may not be depicted. Depictions of columns, bulkheads and other structural elements may vary in dimension and location throughout the building when constructed. Level changes in common areas may not have been shown. You should read the terms in the contract and the plans contained therein and seek appropriately qualified professional advice to understand your rights and obligations. Design changes to the development will be notified in accordance with the terms of the contract and requirements of the Civil Law (Property) Act.

# THE ESTABLISHMENT



## FLOOR PLAN - LEVEL 06

BLOCK 4 & 5, SECTION 224, GUNGAHLIN

DRAWING No DRAWING TITLE

M-0109 FLOOR PLAN - LEVEL 06

REV

C

DATE:

24.05.2021

SCALE BAR:

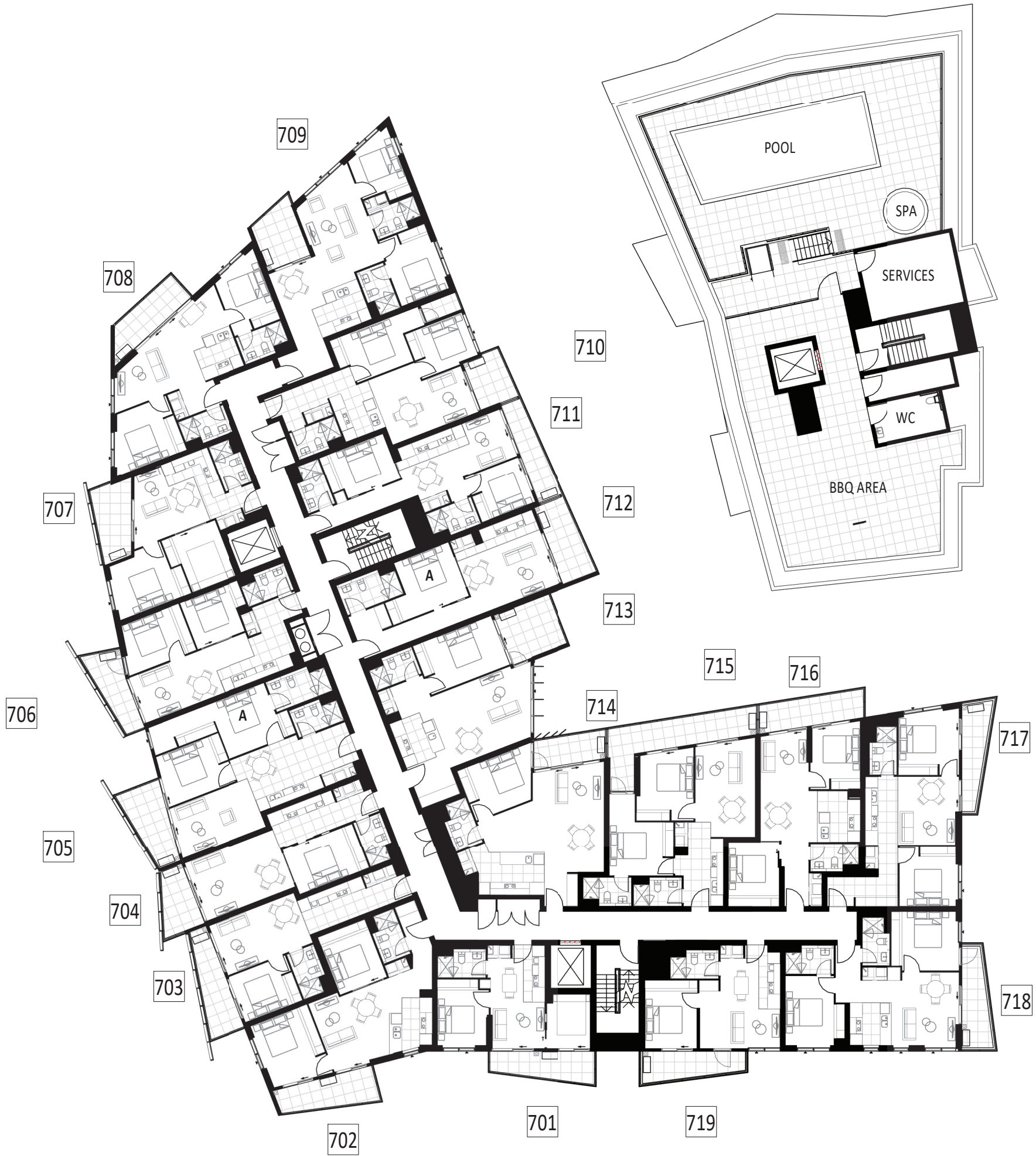


**empire | GEOCON**

The plans and depictions in this document: (a) should be used as a guide only; (b) are believed to be correct at the time of printing; (c) were prepared prior to finalization of design and engineering drawings which are subject to ongoing change; (d) show dimensions of area and scale of floor plans that are approximate; (e) may include graphics of tiling, paver layout, balustrades, landscaping, fencing, louvers, screens, service equipment, and shade devices that are indicative only; and (f) are not guaranteed to be prepared to scale or to accurately reflect the plans in the contract of sale or the building as constructed. Gross floor area calculations are taken from the exterior face of end walls, the centerline of party walls and the exterior face of common area walls. Depictions of furnishings and floor coverings, and fittings are not shown to scale, nor included in the sale transaction for the indicated price or at all unless expressly included in the contract. Inclusion options may be but are not necessarily shown. Location of power points, television or internet connection points and the like are indicative only. Bulkheads for services may not be depicted. Depictions of columns, bulkheads and other structural elements may vary in dimension and location throughout the building when constructed. Level changes in common areas may not have been shown. You should read the terms in the contract and the plans contained therein and seek appropriately qualified professional advice to understand your rights and obligations. Design changes to the development will be notified in accordance with the terms of the contract and requirements of the Civil Law (Property) Act.

DW - DISHWASHER F - FRIDGE SPACE LDRY - LAUNDRY P - PANTRY R - ROBE ST - STORAGE

# THE ESTABLISHMENT



## FLOOR PLAN - LEVEL 07

BLOCK 4 & 5, SECTION 224, GUNGAHLIN

DRAWING No	DRAWING TITLE	REV	DATE:	SCALE BAR:
M-0110	FLOOR PLAN - LEVEL 07	C	24.05.2021	0 1 2 5 10

**empire | GEOCON**

DW - DISHWASHER F - FRIDGE SPACE LDRY - LAUNDRY P - PANTRY R - ROBE ST - STORAGE

The plans and depictions in this document: (a) should be used as a guide only; (b) are believed to be correct at the time of printing; (c) were prepared prior to finalization of design and engineering drawings which are subject to ongoing change; (d) show dimensions of area and scale of floor plans that are approximate; (e) may include graphics of tiling, paver layout, balustrades, landscaping, fencing, louvres, screens, service equipment, and shade devices that are indicative only; and (f) are not guaranteed to be prepared to scale or to accurately reflect the plans in the contract of sale or the building as constructed. Gross floor area calculations are taken from the exterior face of end walls, the centerline of party walls and the exterior face of common area walls. Depictions of furnishings and floor coverings, and fittings are not shown to scale, nor included in the sale transaction for the indicated price or at all unless expressly included in the contract. Inclusion options may be but are not necessarily shown. Location of power points, television or internet connection points and the like are indicative only. Bulkheads for services may not be depicted. Depictions of columns, bulkheads and other structural elements may vary in dimension and location throughout the building when constructed. Level changes in common areas may not have been shown. You should read the terms in the contract and the plans contained therein and seek appropriately qualified professional advice to understand your rights and obligations. Design changes to the development will be notified in accordance with the terms of the contract and requirements of the Civil Law (Property) Act.

# THE ESTABLISHMENT



## FLOOR PLAN - LEVEL 08

BLOCK 4 & 5, SECTION 224, GUNGAHLIN

DRAWING No	DRAWING TITLE	REV	DATE:	SCALE BAR:
M-0111	FLOOR PLAN - LEVEL 08	C	24.05.2021	0 1 2 5 10

**empire | GEOCON**

DW - DISHWASHER F - FRIDGE SPACE LDRY - LAUNDRY P - PANTRY R - ROBE ST - STORAGE

The plans and depictions in this document: (a) should be used as a guide only; (b) are believed to be correct at the time of printing; (c) were prepared prior to finalization of design and engineering drawings which are subject to ongoing change; (d) show dimensions of area and scale of floor plans that are approximate; (e) may include graphics of tiling, paver layout, balustrades, landscaping, fencing, louvres, screens, service equipment, and shade devices that are indicative only; and (f) are not guaranteed to be prepared to scale or to accurately reflect the plans in the contract of sale or the building as constructed. Gross floor area calculations are taken from the exterior face of end walls, the centerline of party walls and the exterior face of common area walls. Depictions of furnishings and floor coverings, and fittings are not shown to scale, nor included in the sale transaction for the indicated price or at all unless expressly included in the contract. Inclusion options may be but are not necessarily shown. Location of power points, television or internet connection points and the like are indicative only. Bulkheads for services may not be depicted. Depictions of columns, bulkheads and other structural elements may vary in dimension and location throughout the building when constructed. Level changes in common areas may not have been shown. You should read the terms in the contract and the plans contained therein and seek appropriately qualified professional advice to understand your rights and obligations. Design changes to the development will be notified in accordance with the terms of the contract and requirements of the Civil Law (Property) Act.

# THE ESTABLISHMENT



## FLOOR PLAN - LEVEL 09

BLOCK 4 & 5, SECTION 224, GUNGAHLIN

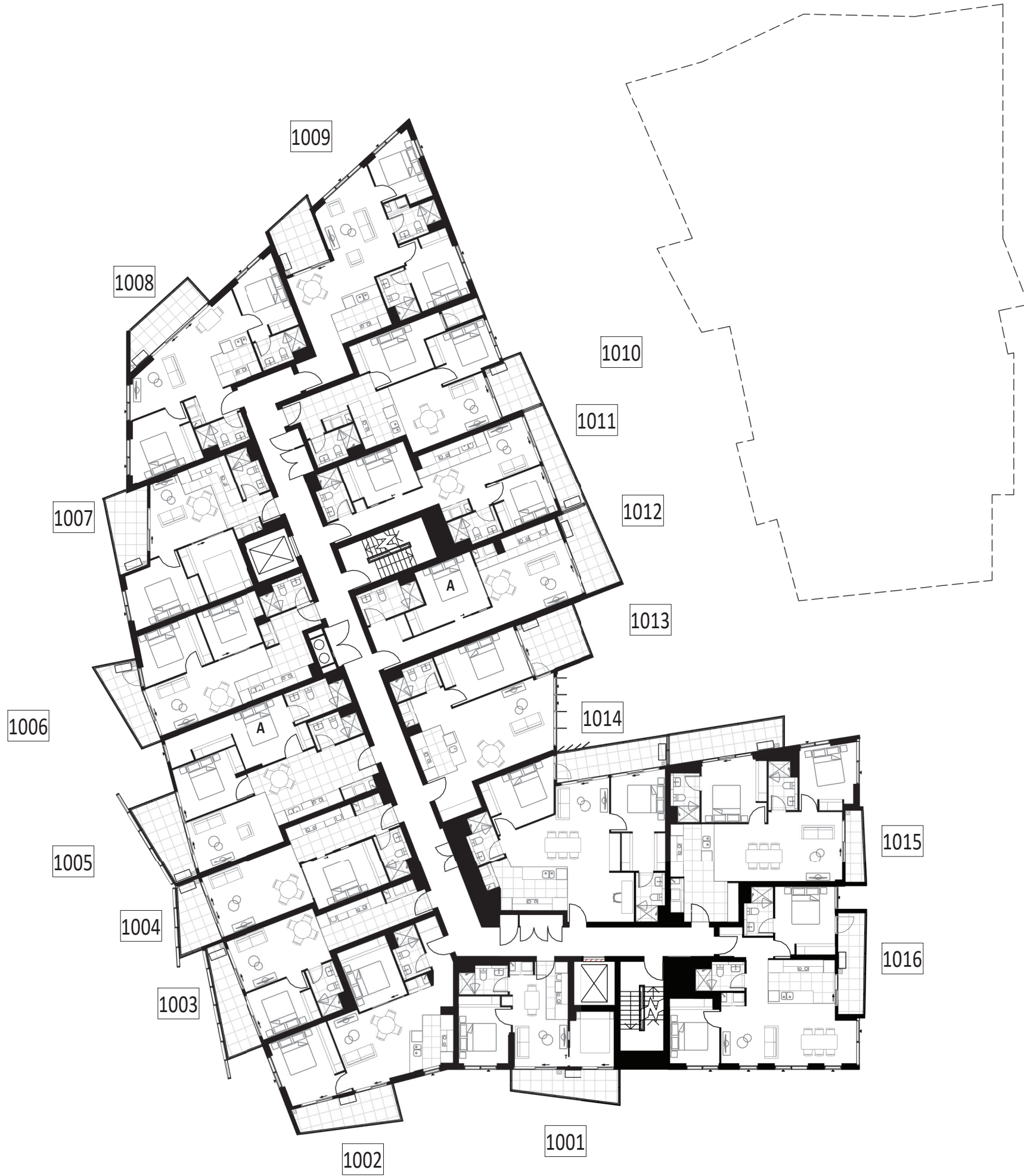
DRAWING No	DRAWING TITLE	REV	DATE:	SCALE BAR:
M-0112	FLOOR PLAN - LEVEL 09	C	24.05.2021	0 1 2 5 10

**empire | GEOCON**

DW - DISHWASHER F - FRIDGE SPACE LDRY - LAUNDRY P - PANTRY R - ROBE ST - STORAGE

The plans and depictions in this document: (a) should be used as a guide only; (b) are believed to be correct at the time of printing; (c) were prepared prior to finalization of design and engineering drawings which are subject to ongoing change; (d) show dimensions of area and scale of floor plans that are approximate; (e) may include graphics of tiling, paver layout, balustrades, landscaping, fencing, louvers, screens, service equipment, and shade devices that are indicative only; and (f) are not guaranteed to be prepared to scale or to accurately reflect the plans in the contract of sale or the building as constructed. Gross floor area calculations are taken from the exterior face of end walls, the centerline of party walls and the exterior face of common area walls. Depictions of furnishings and floor coverings, and fittings are not shown to scale, nor included in the sale transaction for the indicated price or at all unless expressly included in the contract. Inclusion options may be but are not necessarily shown. Location of power points, television or internet connection points and the like are indicative only. Bulkheads for services may not be depicted. Depictions of columns, bulkheads and other structural elements may vary in dimension and location throughout the building when constructed. Level changes in common areas may not have been shown. You should read the terms in the contract and the plans contained therein and seek appropriately qualified professional advice to understand your rights and obligations. Design changes to the development will be notified in accordance with the terms of the contract and requirements of the Civil Law (Property) Act.

# THE ESTABLISHMENT



## FLOOR PLAN - LEVEL 10

BLOCK 4 & 5, SECTION 224, GUNGAHLIN

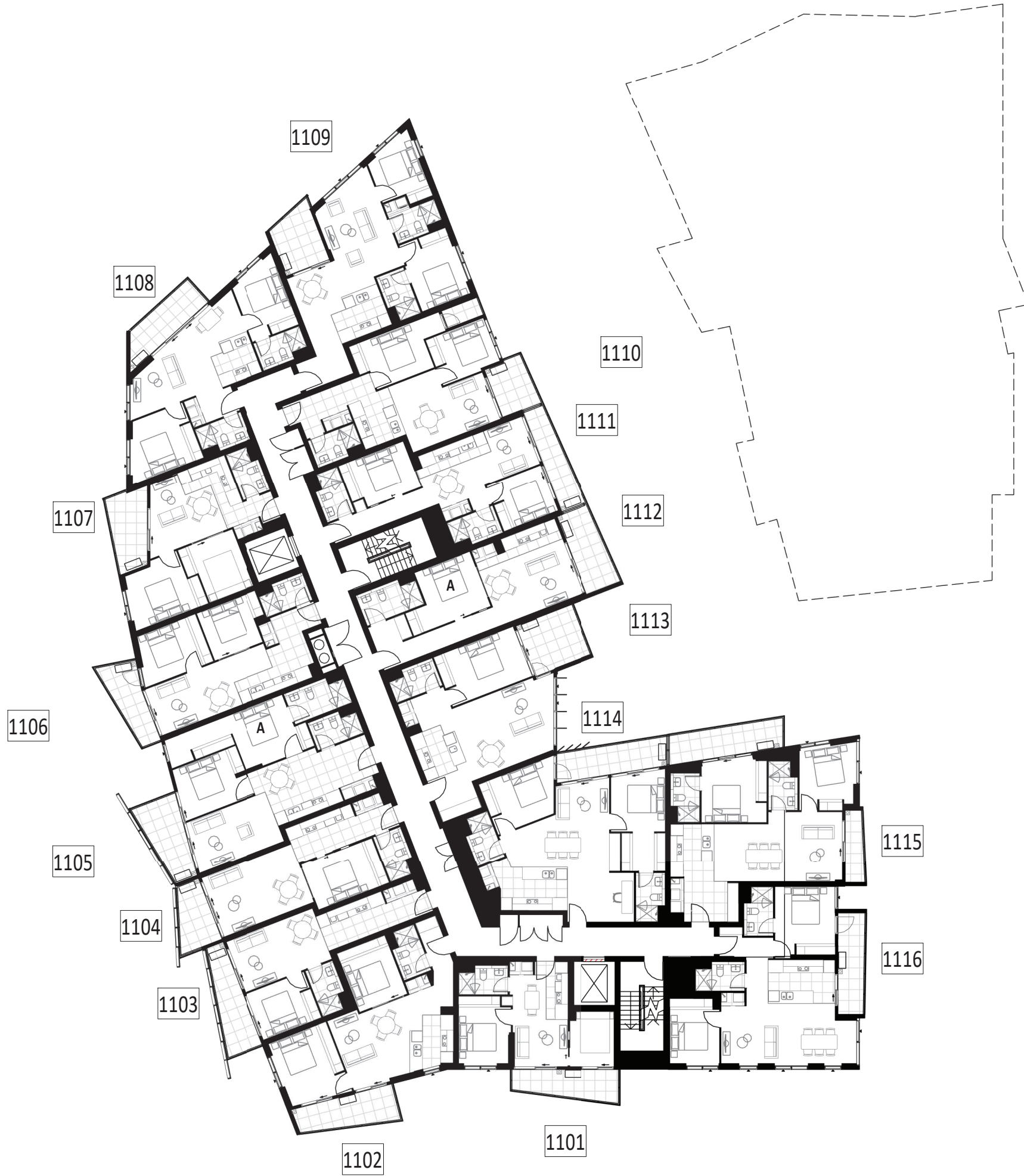
DRAWING No	DRAWING TITLE	REV	DATE:	SCALE BAR:
M-0113	FLOOR PLAN - LEVEL 10	C	24.05.2021	0 1 2 5 10

**empire | GEOCON**

DW - DISHWASHER F - FRIDGE SPACE LDY - LAUNDRY P - PANTRY R - ROBE ST - STORAGE

The plans and depictions in this document: (a) should be used as a guide only; (b) are believed to be correct at the time of printing; (c) were prepared prior to finalization of design and engineering drawings which are subject to ongoing change; (d) show dimensions of area and scale of floor plans that are approximate; (e) may include graphics of tiling, paver layout, balustrades, landscaping, fencing, louvers, screens, service equipment, and shade devices that are indicative only; and (f) are not guaranteed to be prepared to scale or to accurately reflect the plans in the contract of sale or the building as constructed. Gross floor area calculations are taken from the exterior face of end walls, the centerline of party walls and the exterior face of common area walls. Depictions of furnishings and floor coverings, and fittings are not shown to scale, nor included in the sale transaction for the indicated price or at all unless expressly included in the contract. Inclusion options may be but are not necessarily shown. Location of power points, television or internet connection points and the like are indicative only. Bulkheads for services may not be depicted. Depictions of columns, bulkheads and other structural elements may vary in dimension and location throughout the building when constructed. Level changes in common areas may not have been shown. You should read the terms in the contract and the plans contained therein and seek appropriately qualified professional advice to understand your rights and obligations. Design changes to the development will be notified in accordance with the terms of the contract and requirements of the Civil Law (Property) Act.

# THE ESTABLISHMENT



## FLOOR PLAN - LEVEL 11

BLOCK 4 & 5, SECTION 224, GUNGAHLIN

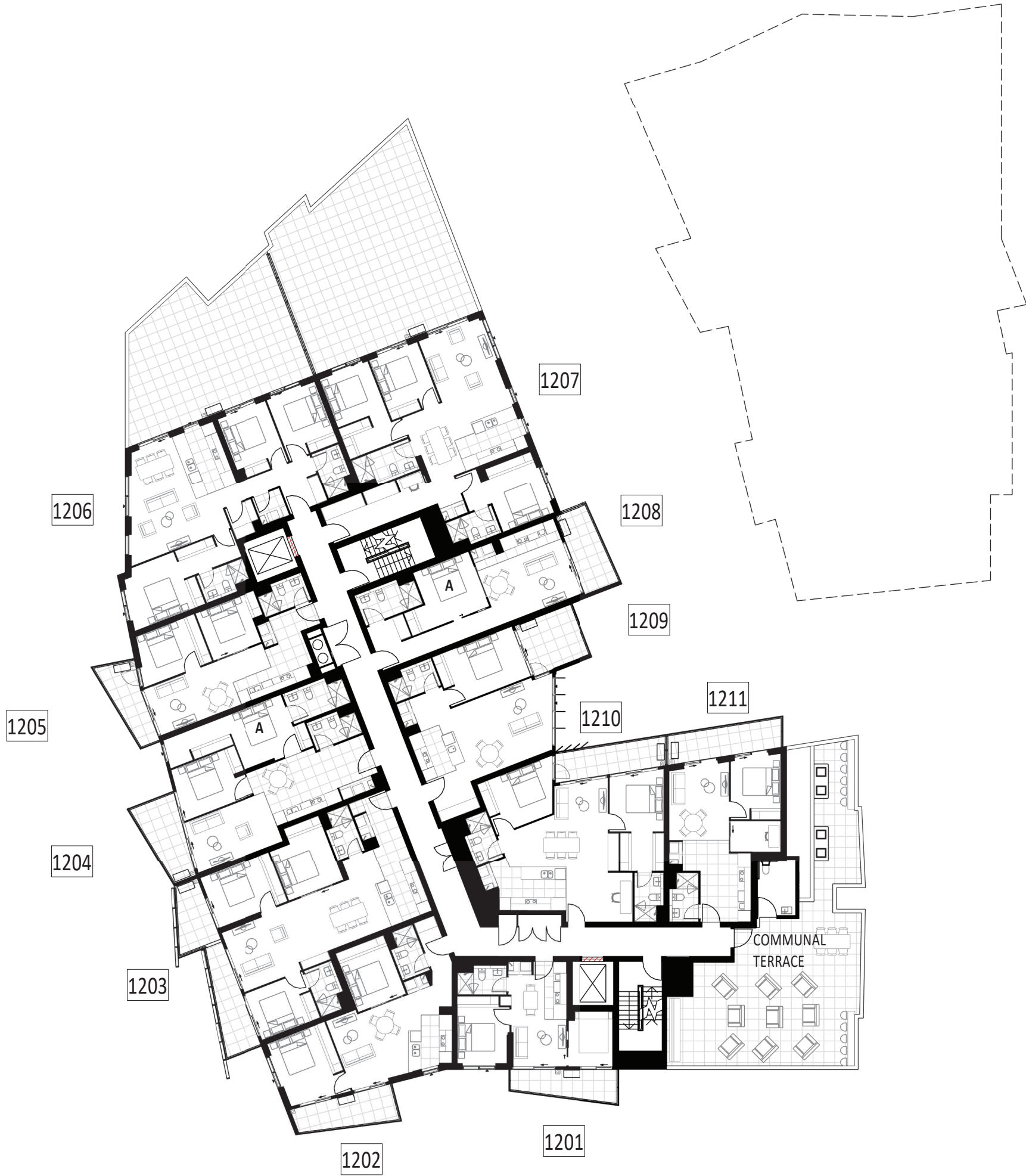
DRAWING No	DRAWING TITLE	REV	DATE:	SCALE BAR:
M-0114	FLOOR PLAN - LEVEL 11	C	24.05.2021	0 1 2 5 10

**empire | GEOCON**

DW - DISHWASHER F - FRIDGE SPACE LDY - LAUNDRY P - PANTRY R - ROBE ST - STORAGE

The plans and depictions in this document: (a) should be used as a guide only; (b) are believed to be correct at the time of printing; (c) were prepared prior to finalization of design and engineering drawings which are subject to ongoing change; (d) show dimensions of area and scale of floor plans that are approximate; (e) may include graphics of tiling, paver layout, balustrades, landscaping, fencing, louvers, screens, service equipment, and shade devices that are indicative only; and (f) are not guaranteed to be prepared to scale or to accurately reflect the plans in the contract of sale or the building as constructed. Gross floor area calculations are taken from the exterior face of end walls, the centerline of party walls and the exterior face of common area walls. Depictions of furnishings and floor coverings, and fittings are not shown to scale, nor included in the sale transaction for the indicated price or at all unless expressly included in the contract. Inclusion options may be but are not necessarily shown. Location of power points, television or internet connection points and the like are indicative only. Bulkheads for services may not be depicted. Depictions of columns, bulkheads and other structural elements may vary in dimension and location throughout the building when constructed. Level changes in common areas may not have been shown. You should read the terms in the contract and the plans contained therein and seek appropriately qualified professional advice to understand your rights and obligations. Design changes to the development will be notified in accordance with the terms of the contract and requirements of the Civil Law (Property) Act.

# THE ESTABLISHMENT



## FLOOR PLAN - LEVEL 12

BLOCK 4 & 5, SECTION 224, GUNGAHLIN

DRAWING No	DRAWING TITLE	REV	DATE:	SCALE BAR:
M-0115	FLOOR PLAN - LEVEL 12	C	24.05.2021	0 1 2 5 10

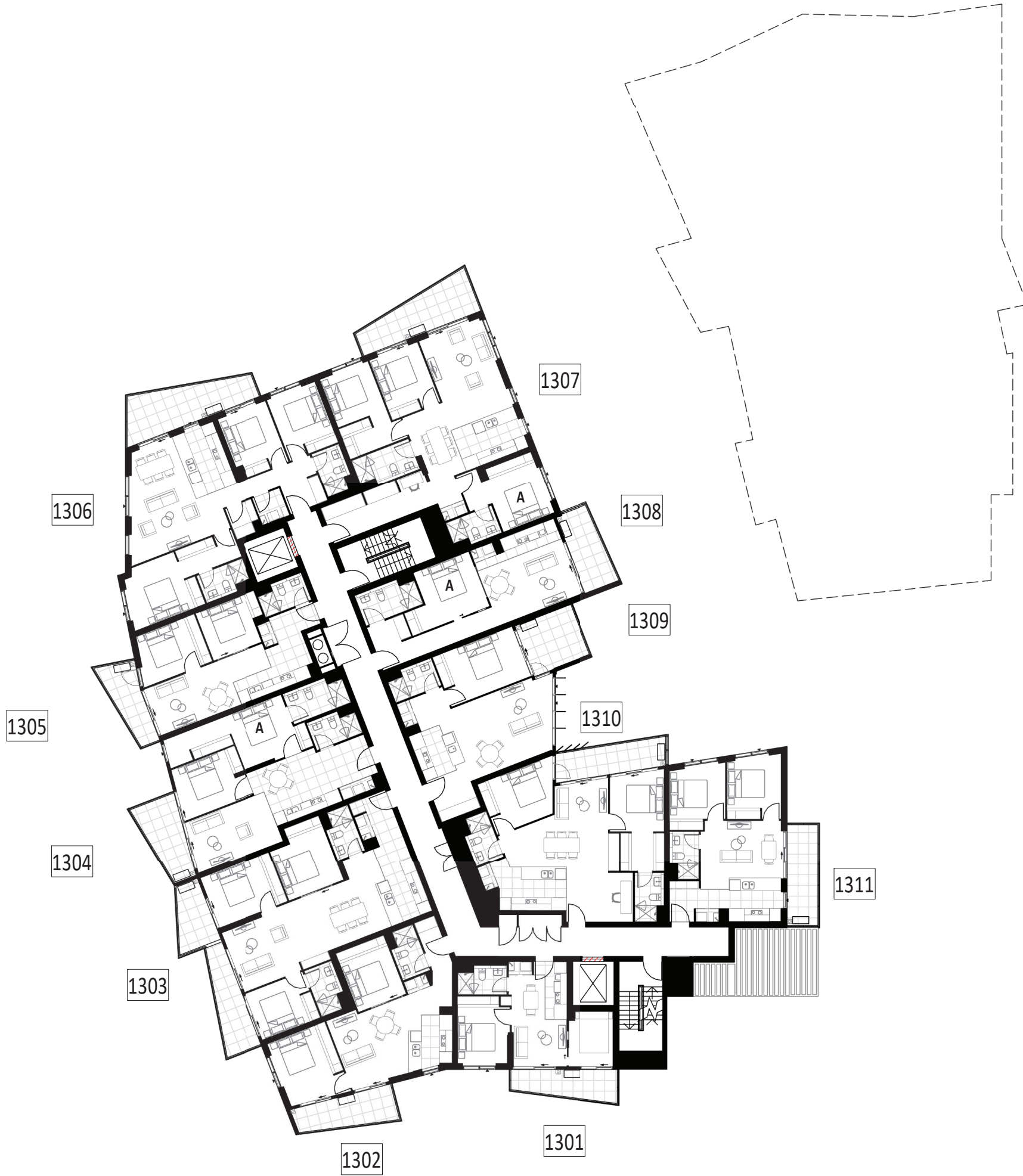
**empire | GEOCON**

DW - DISHWASHER F - FRIDGE SPACE LDRY - LAUNDRY P - PANTRY R - ROBE ST - STORAGE

The plans and depictions in this document: (a) should be used as a guide only; (b) are believed to be correct at the time of printing; (c) were prepared prior to finalization of design and engineering drawings which are subject to ongoing change; (d) show dimensions of area and scale of floor plans that are approximate; (e) may include graphics of tiling, paver layout, balustrades, landscaping, fencing, louvers, screens, service equipment, and shade devices that are indicative only; and (f) are not guaranteed to be prepared to scale or to accurately reflect the plans in the contract of sale or the building as constructed. Gross floor area calculations are taken from the exterior face of end walls, the centerline of party walls and the exterior face of common area walls. Depictions of furnishings and floor coverings, and fittings are not shown to scale, nor included in the sale transaction for the indicated price or at all unless expressly included in the contract. Inclusion options may be but are not necessarily shown. Location of power points, television or internet connection points and the like are indicative only. Bulkheads for services may not be depicted. Depictions of columns, bulkheads and other structural elements may vary in dimension and location throughout the building when constructed. Level changes in common areas may not have been shown. You should read the terms in the contract and the plans contained therein and seek appropriately qualified professional advice to understand your rights and obligations. Design changes to the development will be notified in accordance with the terms of the contract and requirements of the Civil Law (Property) Act.



# THE ESTABLISHMENT



## FLOOR PLAN - LEVEL 13

BLOCK 4 & 5, SECTION 224, GUNGAHLIN

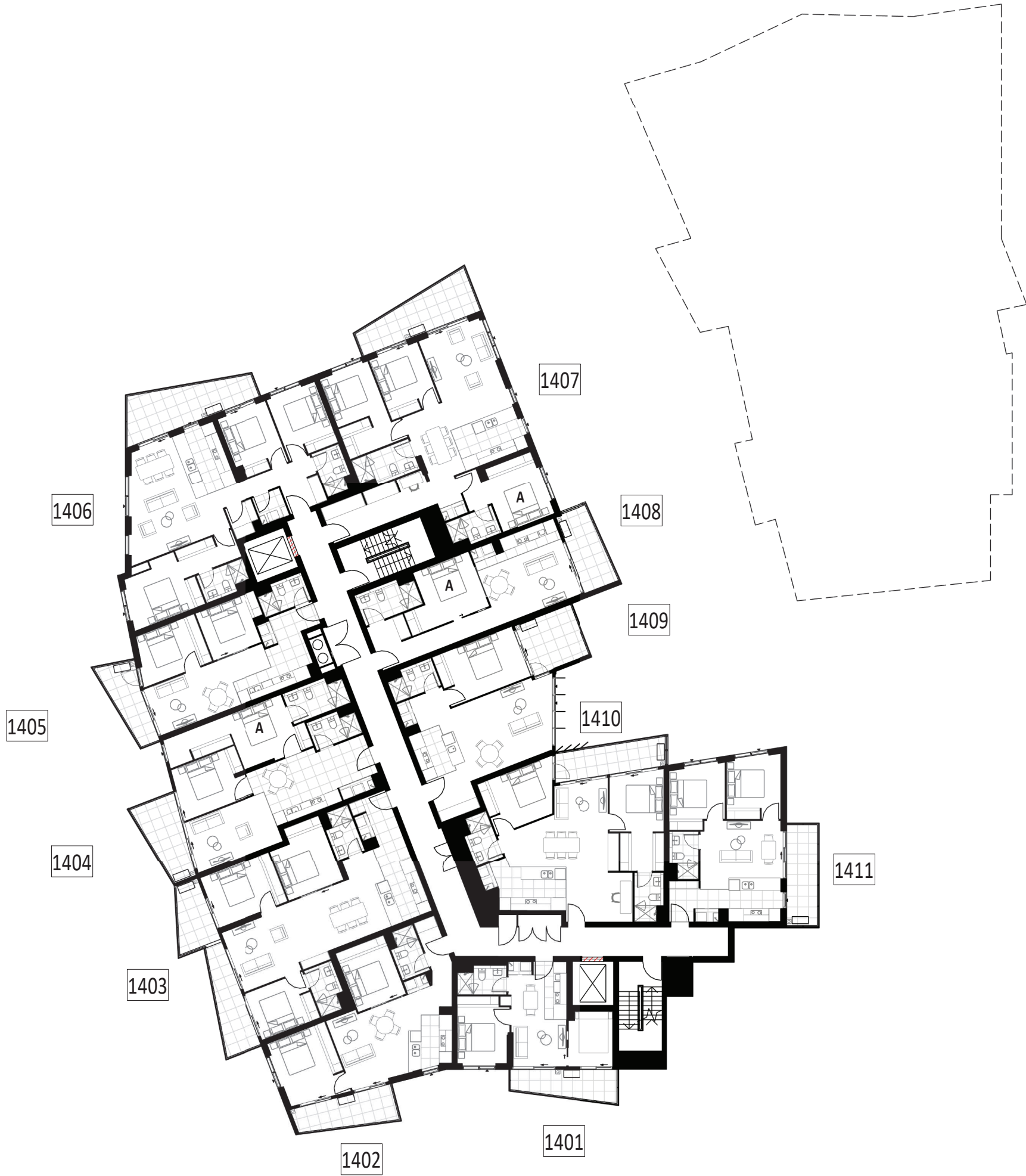
DRAWING No	DRAWING TITLE	REV	DATE:	SCALE BAR:
M-0116	FLOOR PLAN - LEVEL 13	C	24.05.2021	0 1 2 5 10

**empire | GEOCON**

DW - DISHWASHER F - FRIDGE SPACE LDRY - LAUNDRY P - PANTRY R - ROBE ST - STORAGE

The plans and depictions in this document: (a) should be used as a guide only; (b) are believed to be correct at the time of printing; (c) were prepared prior to finalization of design and engineering drawings which are subject to ongoing change; (d) show dimensions of area and scale of floor plans that are approximate; (e) may include graphics of tiling, paver layout, balustrades, landscaping, fencing, louvers, screens, service equipment, and shade devices that are indicative only; and (f) are not guaranteed to be prepared to scale or to accurately reflect the plans in the contract of sale or the building as constructed. Gross floor area calculations are taken from the exterior face of end walls, the centerline of party walls and the exterior face of common area walls. Depictions of furnishings and floor coverings, and fittings are not shown to scale, nor included in the sale transaction for the indicated price or at all unless expressly included in the contract. Inclusion options may be but are not necessarily shown. Location of power points, television or internet connection points and the like are indicative only. Bulkheads for services may not be depicted. Depictions of columns, bulkheads and other structural elements may vary in dimension and location throughout the building when constructed. Level changes in common areas may not have been shown. You should read the terms in the contract and the plans contained therein and seek appropriately qualified professional advice to understand your rights and obligations. Design changes to the development will be notified in accordance with the terms of the contract and requirements of the Civil Law (Property) Act.

# THE ESTABLISHMENT



## FLOOR PLAN - LEVEL 14

BLOCK 4 & 5, SECTION 224, GUNGAHLIN

DRAWING No DRAWING TITLE

M-0117 FLOOR PLAN - LEVEL 14

REV

C

DATE:

24.05.2021

SCALE BAR:

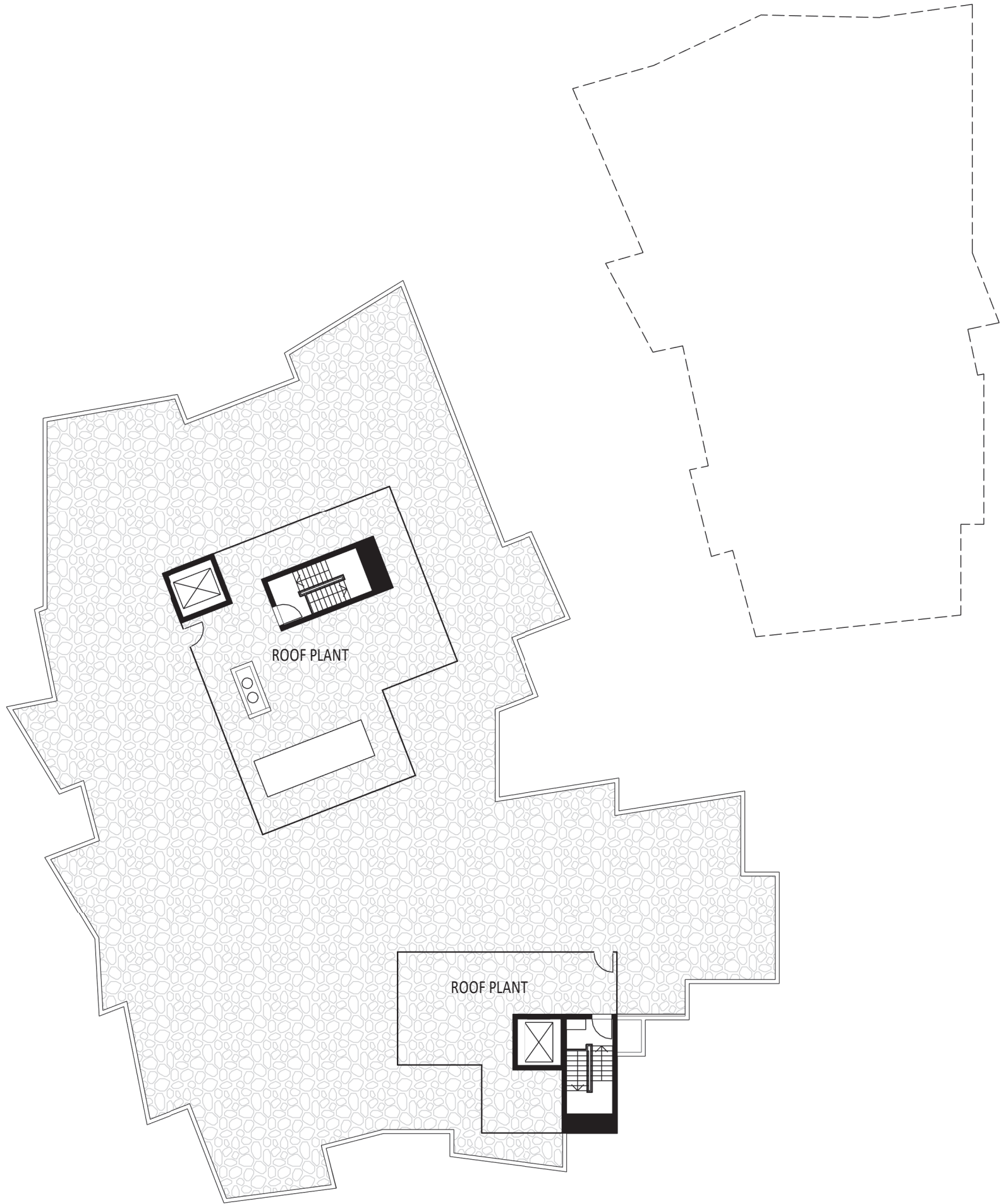


**empire | GEOCON**

The plans and depictions in this document: (a) should be used as a guide only; (b) are believed to be correct at the time of printing; (c) were prepared prior to finalization of design and engineering drawings which are subject to ongoing change; (d) show dimensions of area and scale of floor plans that are approximate; (e) may include graphics of tiling, paver layout, balustrades, landscaping, fencing, louvers, screens, service equipment, and shade devices that are indicative only; and (f) are not guaranteed to be prepared to scale or to accurately reflect the plans in the contract of sale or the building as constructed. Gross floor area calculations are taken from the exterior face of end walls, the centerline of party walls and the exterior face of common area walls. Depictions of furnishings and floor coverings, and fittings are not shown to scale, nor included in the sale transaction for the indicated price or at all unless expressly included in the contract. Inclusion options may be but are not necessarily shown. Location of power points, television or internet connection points and the like are indicative only. Bulkheads for services may not be depicted. Depictions of columns, bulkheads and other structural elements may vary in dimension and location throughout the building when constructed. Level changes in common areas may not have been shown. You should read the terms in the contract and the plans contained therein and seek appropriately qualified professional advice to understand your rights and obligations. Design changes to the development will be notified in accordance with the terms of the contract and requirements of the Civil Law (Property) Act.

DW - DISHWASHER F - FRIDGE SPACE LDRY - LAUNDRY P - PANTRY R - ROBE ST - STORAGE

# THE ESTABLISHMENT

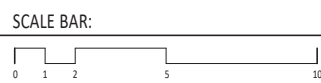


## FLOOR PLAN - ROOF

BLOCK 4 & 5, SECTION 224, GUNGAHLIN

DRAWING No M-0118 DRAWING TITLE FLOOR PLAN - ROOF

REV C DATE: 24.05.2021



**empire | GEOCON**

The plans and depictions in this document: (a) should be used as a guide only; (b) are believed to be correct at the time of printing; (c) were prepared prior to finalization of design and engineering drawings which are subject to ongoing change; (d) show dimensions of area and scale of floor plans that are approximate; (e) may include graphics of tiling, paver layout, balustrades, landscaping, fencing, louvers, screens, service equipment, and shade devices that are indicative only; and (f) are not guaranteed to be prepared to scale or to accurately reflect the plans in the contract of sale or the building as constructed. Gross floor area calculations are taken from the exterior face of end walls, the centerline of party walls and the exterior face of common area walls. Depictions of furnishings and floor coverings, and fittings are not shown to scale, nor included in the sale transaction for the indicated price or at all unless expressly included in the contract. Inclusion options may be but are not necessarily shown. Location of power points, television or internet connection points and the like are indicative only. Bulkheads for services may not be depicted. Depictions of columns, bulkheads and other structural elements may vary in dimension and location throughout the building when constructed. Level changes in common areas may not have been shown. You should read the terms in the contract and the plans contained therein and seek appropriately qualified professional advice to understand your rights and obligations. Design changes to the development will be notified in accordance with the terms of the contract and requirements of the Civil Law (Property) Act.

DW - DISHWASHER F - FRIDGE SPACE LDRY - LAUNDRY P - PANTRY R - ROBE ST - STORAGE

# THE ESTABLISHMENT



BLOCK 4 & 5, SECTION 224, GUNGAHLIN

DRAWING No DRAWING TITLE  
M-0200 NORTH ELEVATION

REV DATE:  
D 08.06.2021

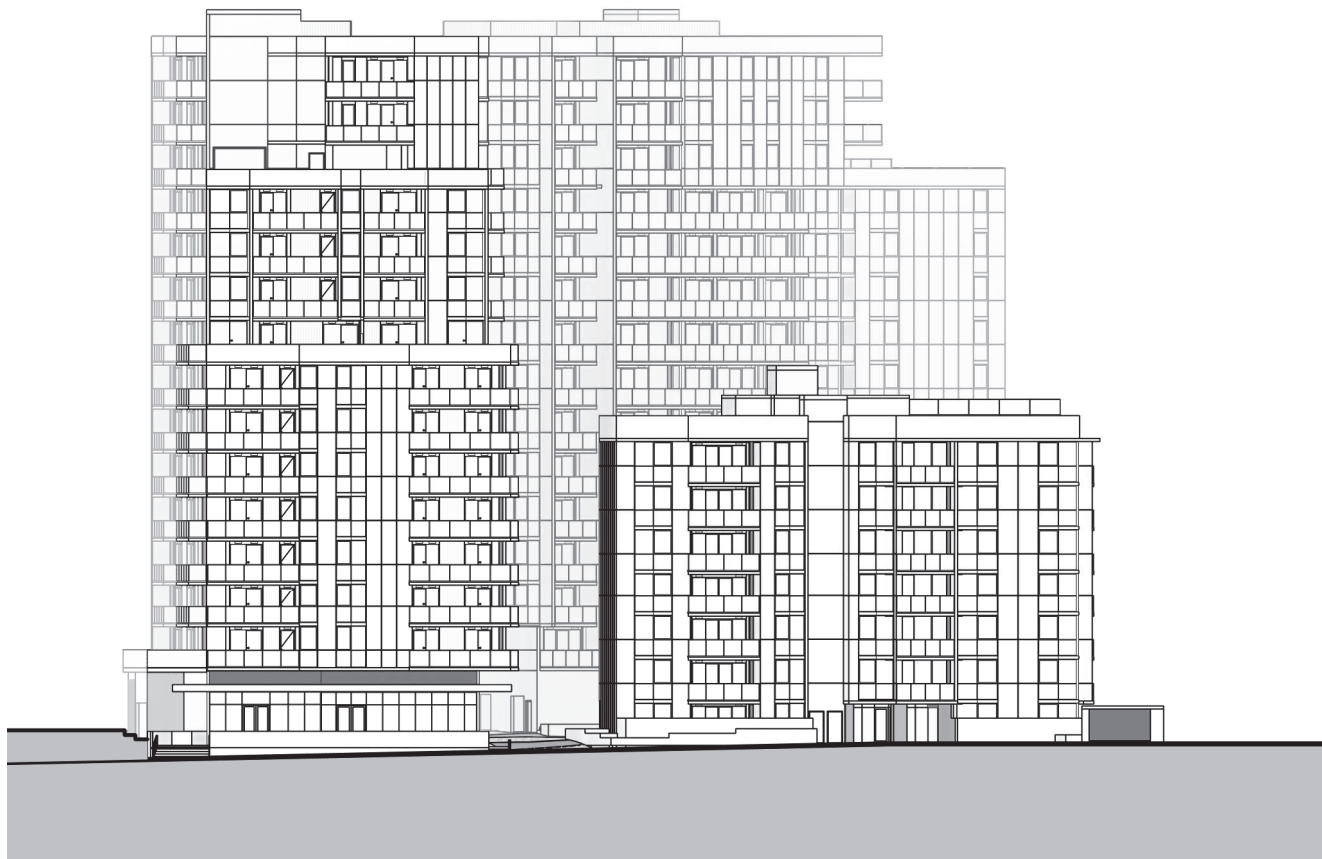
SCALE BAR:  
0 5 10 25

**empire | GEOCON**

DW - DISHWASHER F - FRIDGE SPACE LDRY - LAUNDRY P - PANTRY R - ROBE ST - STORAGE

The plans and depictions in this document: (a) should be used as a guide only; (b) are believed to be correct at the time of printing; (c) were prepared prior to finalization of design and engineering drawings which are subject to ongoing change; (d) show dimensions of area and scale of floor plans that are approximate; (e) may include graphics of tiling, paver layout, balustrades, landscaping, fencing, louvers, screens, service equipment, and shade devices that are indicative only; and (f) are not guaranteed to be prepared to scale or to accurately reflect the plans in the contract of sale or the building as constructed. Gross floor area calculations are taken from the exterior face of end walls, the centerline of party walls and the exterior face of common area walls. Depictions of furnishings and floor coverings, and fittings are not shown to scale, nor included in the sale transaction for the indicated price or at all unless expressly included in the contract. Inclusion options may be but are not necessarily shown. Location of power points, television or internet connection points and the like are indicative only. Bulkheads for services may not be depicted. Depictions of columns, bulkheads and other structural elements may vary in dimension and location throughout the building when constructed. Level changes in common areas may not have been shown. You should read the terms in the contract and the plans contained therein and seek appropriately qualified professional advice to understand your rights and obligations. Design changes to the development will be notified in accordance with the terms of the contract and requirements of the Civil Law (Property) Act.

# THE ESTABLISHMENT



BLOCK 4 & 5, SECTION 224, GUNGAHLIN

DRAWING No DRAWING TITLE  
M-0201 EAST ELEVATION

REV  
D

DATE:  
08.06.2021

SCALE BAR:



**empire | GEOCON**

The plans and depictions in this document: (a) should be used as a guide only; (b) are believed to be correct at the time of printing; (c) were prepared prior to finalization of design and engineering drawings which are subject to ongoing change; (d) show dimensions of area and scale of floor plans that are approximate; (e) may include graphics of tiling, paver layout, balustrades, landscaping, fencing, louvers, screens, service equipment, and shade devices that are indicative only; and (f) are not guaranteed to be prepared to scale or to accurately reflect the plans in the contract of sale or the building as constructed. Gross floor area calculations are taken from the exterior face of end walls, the centerline of party walls and the exterior face of common area walls. Depictions of furnishings and floor coverings, and fittings are not shown to scale, nor included in the sale transaction for the indicated price or at all unless expressly included in the contract. Inclusion options may be but are not necessarily shown. Location of power points, television or internet connection points and the like are indicative only. Bulkheads for services may not be depicted. Depictions of columns, bulkheads and other structural elements may vary in dimension and location throughout the building when constructed. Level changes in common areas may not have been shown. You should read the terms in the contract and the plans contained therein and seek appropriately qualified professional advice to understand your rights and obligations. Design changes to the development will be notified in accordance with the terms of the contract and requirements of the Civil Law (Property) Act.

DW - DISHWASHER F - FRIDGE SPACE LDRY - LAUNDRY P - PANTRY R - ROBE ST - STORAGE

# THE ESTABLISHMENT



BLOCK 4 & 5, SECTION 224, GUNGAHLIN

DRAWING No DRAWING TITLE  
M-0202 SOUTH ELEVATION

REV DATE:  
D 08.06.2021

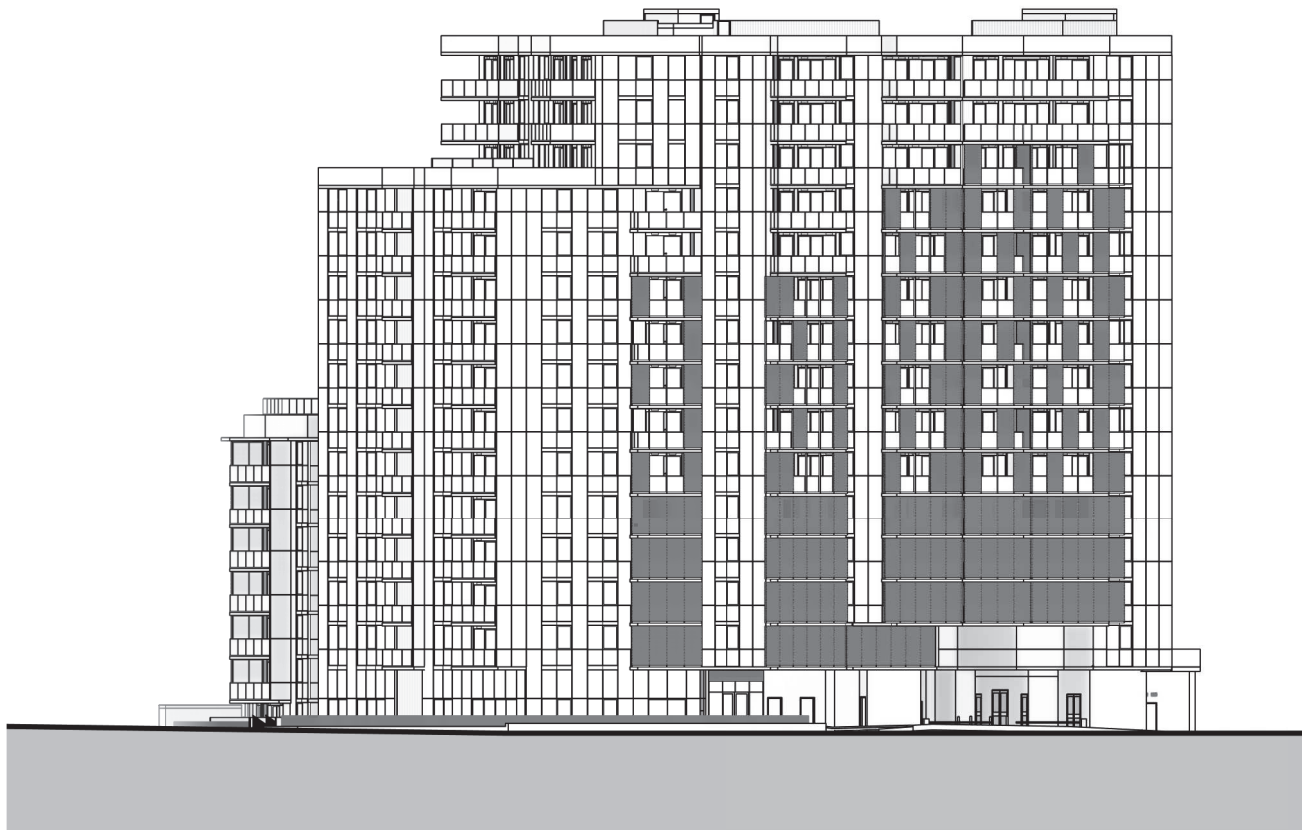
SCALE BAR:  
0 5 10 25

**empire | GEOCON**

DW - DISHWASHER F - FRIDGE SPACE LDY - LAUNDRY P - PANTRY R - ROBE ST - STORAGE

The plans and depictions in this document: (a) should be used as a guide only; (b) are believed to be correct at the time of printing; (c) were prepared prior to finalization of design and engineering drawings which are subject to ongoing change; (d) show dimensions of area and scale of floor plans that are approximate; (e) may include graphics of tiling, paver layout, balustrades, landscaping, fencing, louvers, screens, service equipment, and shade devices that are indicative only; and (f) are not guaranteed to be prepared to scale or to accurately reflect the plans in the contract of sale or the building as constructed. Gross floor area calculations are taken from the exterior face of end walls, the centerline of party walls and the exterior face of common area walls. Depictions of furnishings and floor coverings, and fittings are not shown to scale, nor included in the sale transaction for the indicated price or at all unless expressly included in the contract. Inclusion options may be but are not necessarily shown. Location of power points, television or internet connection points and the like are indicative only. Bulkheads for services may not be depicted. Depictions of columns, bulkheads and other structural elements may vary in dimension and location throughout the building when constructed. Level changes in common areas may not have been shown. You should read the terms in the contract and the plans contained therein and seek appropriately qualified professional advice to understand your rights and obligations. Design changes to the development will be notified in accordance with the terms of the contract and requirements of the Civil Law (Property) Act.

# THE ESTABLISHMENT



NOTE: PRIVACY SCREENING/FROSTING TO WEST FACADE

BLOCK 4 & 5, SECTION 224, GUNGAHLIN

DRAWING No DRAWING TITLE  
M-0203 WEST ELEVATION

REV  
D

DATE:  
08.06.2021

SCALE BAR:



**empire | GEOCON**

The plans and depictions in this document: (a) should be used as a guide only; (b) are believed to be correct at the time of printing; (c) were prepared prior to finalization of design and engineering drawings which are subject to ongoing change; (d) show dimensions of area and scale of floor plans that are approximate; (e) may include graphics of tiling, paver layout, balustrades, landscaping, fencing, louvers, screens, service equipment, and shade devices that are indicative only; and (f) are not guaranteed to be prepared to scale or to accurately reflect the plans in the contract of sale or the building as constructed. Gross floor area calculations are taken from the exterior face of end walls, the centerline of party walls and the exterior face of common area walls. Depictions of furnishings and floor coverings, and fittings are not shown to scale, nor included in the sale transaction for the indicated price or at all unless expressly included in the contract. Inclusion options may be but are not necessarily shown. Location of power points, television or internet connection points and the like are indicative only. Bulkheads for services may not be depicted. Depictions of columns, bulkheads and other structural elements may vary in dimension and location throughout the building when constructed. Level changes in common areas may not have been shown. You should read the terms in the contract and the plans contained therein and seek appropriately qualified professional advice to understand your rights and obligations. Design changes to the development will be notified in accordance with the terms of the contract and requirements of the Civil Law (Property) Act.

DW - DISHWASHER F - FRIDGE SPACE LDRY - LAUNDRY P - PANTRY R - ROBE ST - STORAGE