



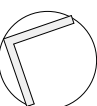
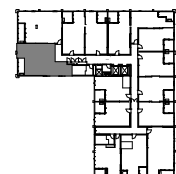
## UNIT TYPE - 2G

INTERNAL	89 m <sup>2</sup>	3.201
EXTERNAL	8 m <sup>2</sup>	3.301
TOTAL AREA	97 m <sup>2</sup>	3.401

## APPLICABLE TO UNITS:

DW - DISHWASHER F - FRIDGE SPACE P - PANTRY W/P - WALK IN PANTRY R - ROBE S - STUDY  
 ST - STORAGE WM - WASHING MACHINE SPACE

NOTE: ALL LAYOUTS SUBJECT TO STRUCTURAL / SERVICES REQUIREMENTS



0 m 3 m



DWG NO	DWG TITLE	REVISION	DATE
M-C1023a	UNIT TYPE - 2G	REV - 4	26.06.2020

**GEOCON**  
 BUILDING CANBERRA

Whilst we endeavour to ensure the contents of these plans are correct at the time of printing, the information they contain is to be used as a guide only. Furnishings and floor coverings are for illustrative purposes only, are not shown to scale nor included in the stated price (unless expressly included). The columns shown may vary in diameter throughout the Building. All areas are provided in accordance with the Method of Measurement for Residential Property provided by the Property Council of Australia. The plans were completed prior to the completion of final design, engineering and construction of the Building, therefore design, engineering, dimensions, fittings, finishes and specifications are subject to change without notice in accordance with the provisions of the Contract of Sale.