



LOT 27

6 4 2

\$995,000

HOUSE & LAND  
PACKAGE

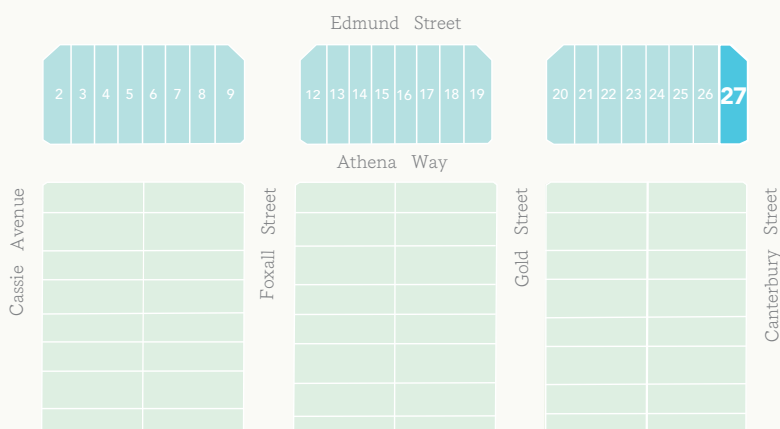


Artists impression only. Landscaping is indicative only. Subject to change.

HALO DESIGN - LINEN SCHEME

## FEATURES

- 2600mm high ceilings to ground floor
- Designer tiles throughout entire ground floor excl. bedrooms
- 20mm stone kitchen benchtop with double-bowl under-mount sink
- 900mm European designed stainless steel appliances including oven, gas cooktop, externally ducted rangehood, dishwasher and microwave
- Freestanding bathtub and stone benchtops to vanities
- Ducted air conditioning - 2 zones
- LED downlights
- Automatic garage door and alarm system
- Flyscreens to operable windows
- Fully landscaped site including turf, planting, driveway, letter-box, clothesline and fencing



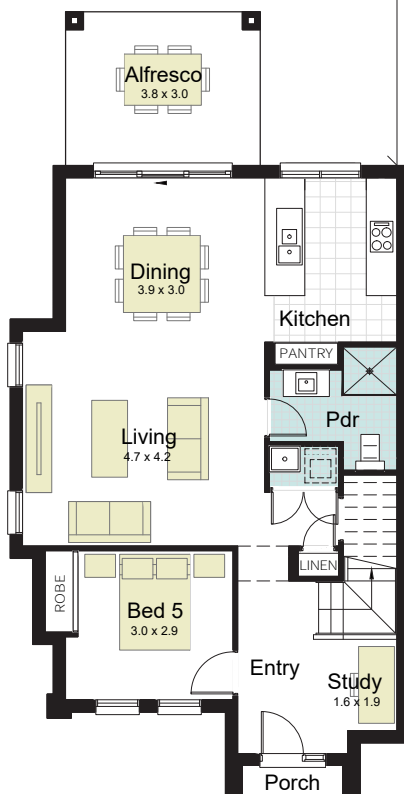
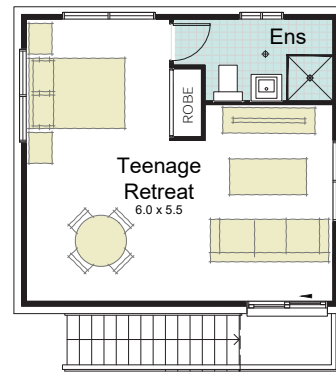
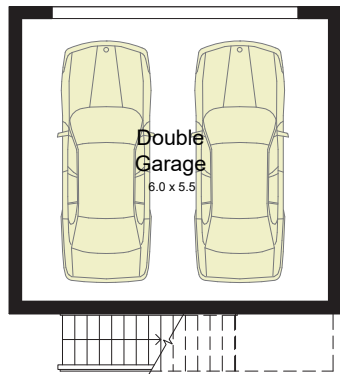
**Elderton  
Homes**

[crownhill.com.au](http://crownhill.com.au)

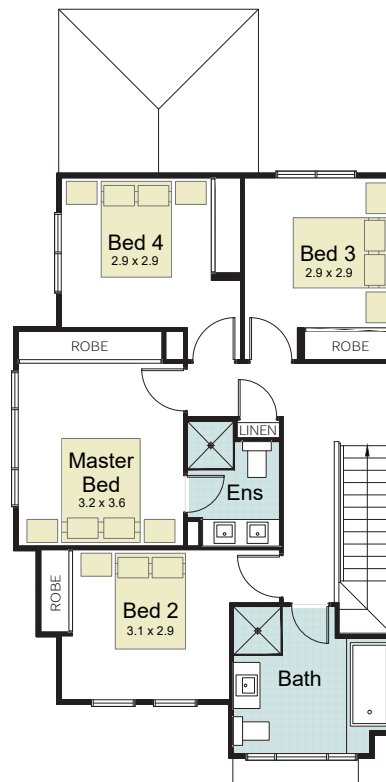
**LAND SIZE 331.0m<sup>2</sup>**

GROUND FLOOR	83.85m <sup>2</sup>
FIRST FLOOR	76.56m <sup>2</sup>
GARAGE	38.37m <sup>2</sup>
PORCH	1.66m <sup>2</sup>
ALFRESCO	11.40m <sup>2</sup>
TEENAGE RETREAT	35.11m <sup>2</sup>
<b>GROSS FLOOR AREA</b>	<b>246.95m<sup>2</sup></b>

**LOT 27**



**GROUND FLOOR**



**FIRST FLOOR**

visit [crownhill.com.au](http://crownhill.com.au)

© \*All drawings and photography are for illustrative purposes and should be used as a guide only. Elderton Homes and Goldmate Group reserves the right to reserve plans, specifications and places without notice or obligation. Copyright of plans and documentation prepared by Elderton Homes shall remain the exclusive property of Elderton Homes and Goldmate Group unless a license is issued otherwise. Elderton Homes ABN: 33138413902. Builders Licence: 218678C.