

MARSDEN PARK - NSW

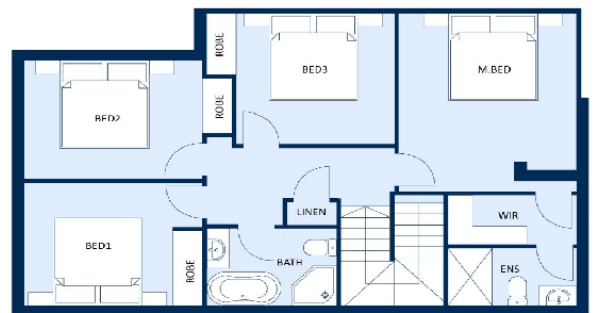
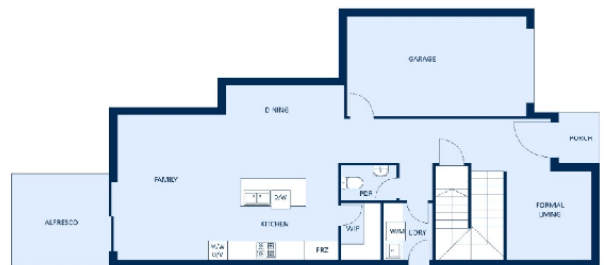


Land Size: 232-240sqm
House Size: 20-21 Sq

Registration June 2021
4Bed + 2.5Bath + 1Car

PREMIUM INCLUSIONS:

- 2700mm ceiling height
- 2340 door height
- Designer Kitchen
- Designer facade
- 40mm Kitchen Benchtop
- Awning Windows
- 1200mm wide Entry door
- Colored Concrete Driveway
- Ducted Aircon
- LED Downlights throughout
- Tiles/Timber flooring to all area
- Fly Screen for opening windows



FIXED PRICED TURN KEY PACKAGE