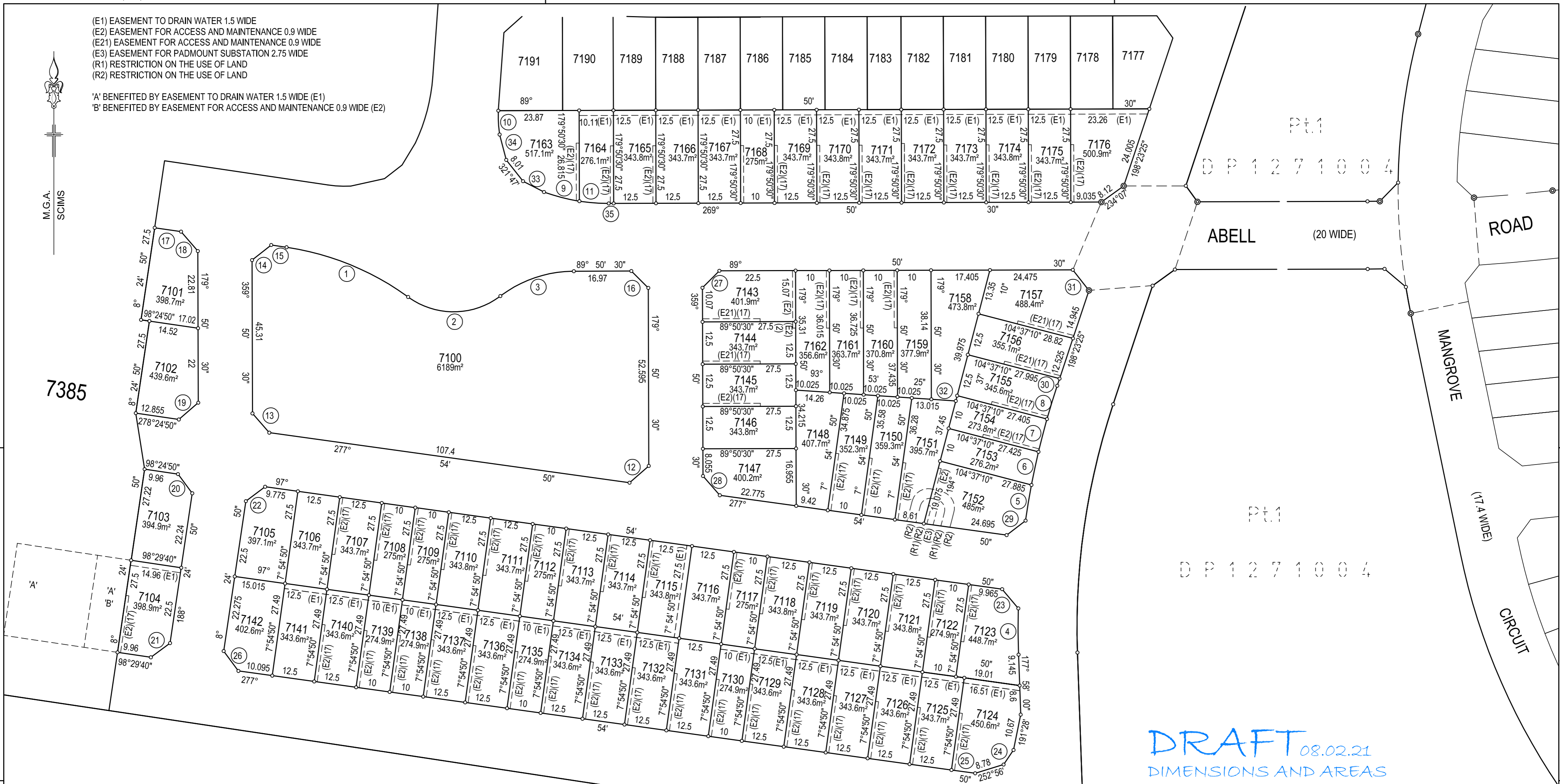


(E1) EASEMENT TO DRAIN WATER 1.5 WIDE
 (E2) EASEMENT FOR ACCESS AND MAINTENANCE 0.9 WIDE
 (E21) EASEMENT FOR ACCESS AND MAINTENANCE 0.9 WIDE
 (E3) EASEMENT FOR PADMOUNT SUBSTATION 2.75 WIDE
 (R1) RESTRICTION ON THE USE OF LAND
 (R2) RESTRICTION ON THE USE OF LAND

'A' BENEFITED BY EASEMENT TO DRAIN WATER 1.5 WIDE (E1)
 'B' BENEFITED BY EASEMENT FOR ACCESS AND MAINTENANCE 0.9 WIDE (E2)



SCHEDULE of LINES

No	Bearing	Distance	No	Bearing	Distance
12	228°52'40"	7.55	24	214°15'40"	5.2
13	318°52'40"	7.55	25	277°54'50"	7.065
14	51°43'15"	7.21	26	323°27'15"	7.305
15	98°24'50"	4.58	27	44°50'30"	7.07
16	134°50'30"	7.07	28	318°52'40"	7.55
17	98°24'50"	7.875	29	232°38'45"	7.04
18	139°07'40"	7.58	30	198°23'25"	2.205
19	229°07'40"	7.58	31	141°56'55"	7.72
20	143°24'50"	7.07	32	273°53'25"	7.225
21	233°27'15"	7.065	33	297°18'50"	6.97
22	53°09'50"	7.1	34	345°21'10"	7.74
23	139°59'05"	7.425	35	269°50'30"	1.45

SCHEDULE of CURVED BOUNDARIES

No	Bearing	Chord	Arc	Radius
1	112°16'00"	38.79	39.17	81
2	89°25'55"	27.245	29.2	22.8
3	71°17'30"	22.905	23.31	36
4	179°41'45"	13.66	13.66	226.4
5	189°21'50"	10.69	10.69	226.4
6	191°59'00"	10.01	10.01	226.4
7	194°31'00"	10	10	226.4
8	197°05'10"	10.31	10.31	226.4
9	284°32'05"	10.805	10.82	55
10	356°55'00"	7.065	7.075	40
11	274°22'15"	8.685	8.695	55

SURVEYOR
 Name: Peter Robert Warwick
 Date: xxxxxxxx
 Reference: 20260-7C

PLAN OF SUBDIVISION OF
 LOTS 2 & 6 D.P.1271004
 AND EASEMENTS OVER LOT 4 D.P.1271004

L.G.A: BLACKTOWN
 Locality: MELONBA
 Reduction Ratio: 1: 800
 Lengths are in metres

REGISTERED

D.P.1261155



SCHEDULE of CURVED BOUNDARIES

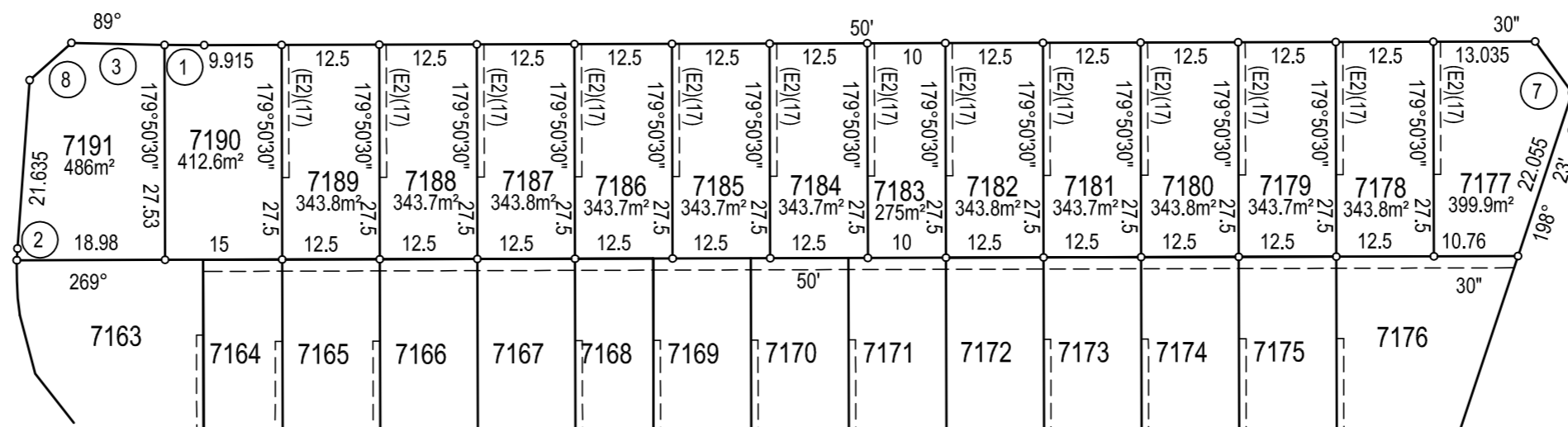
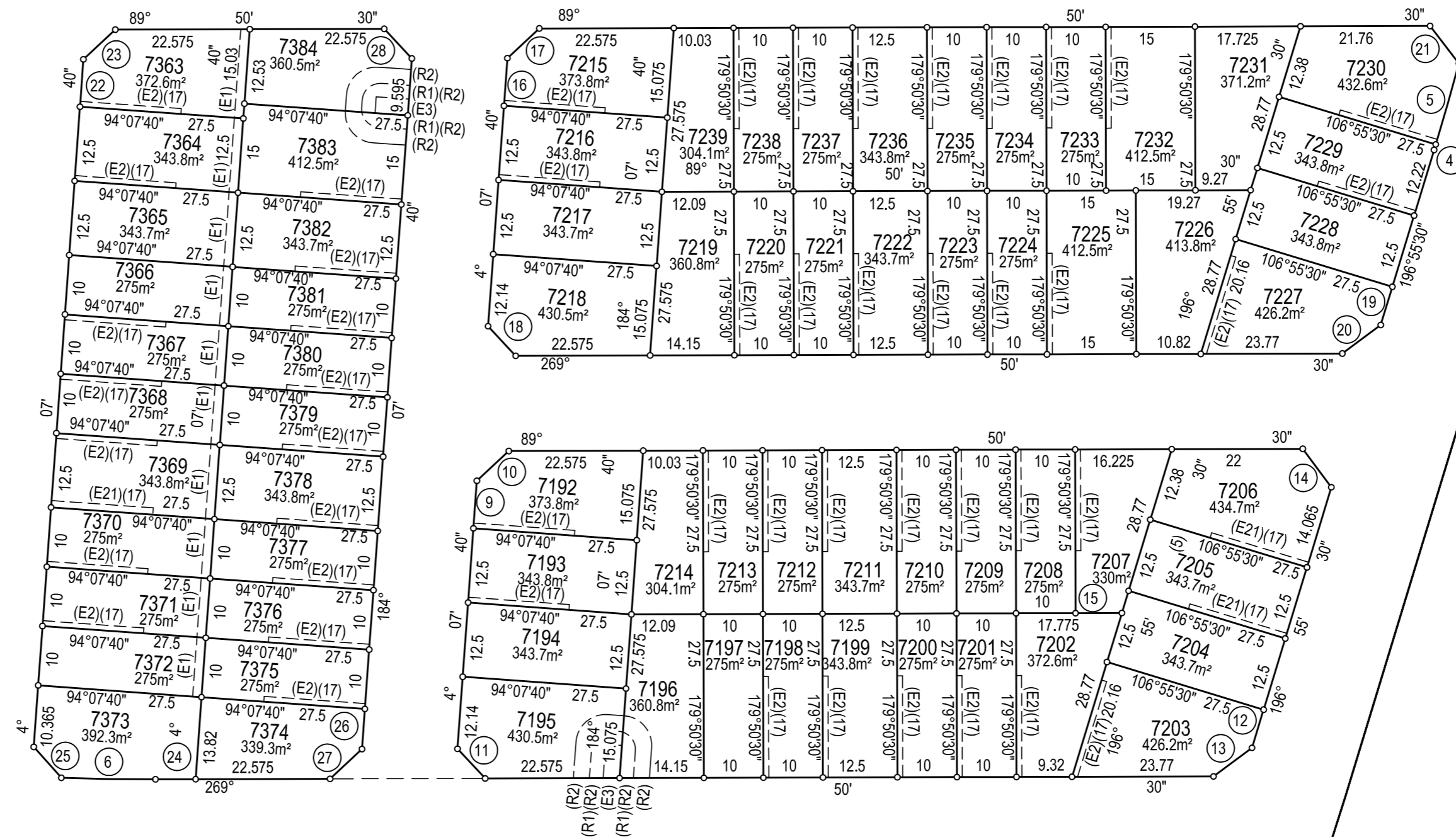
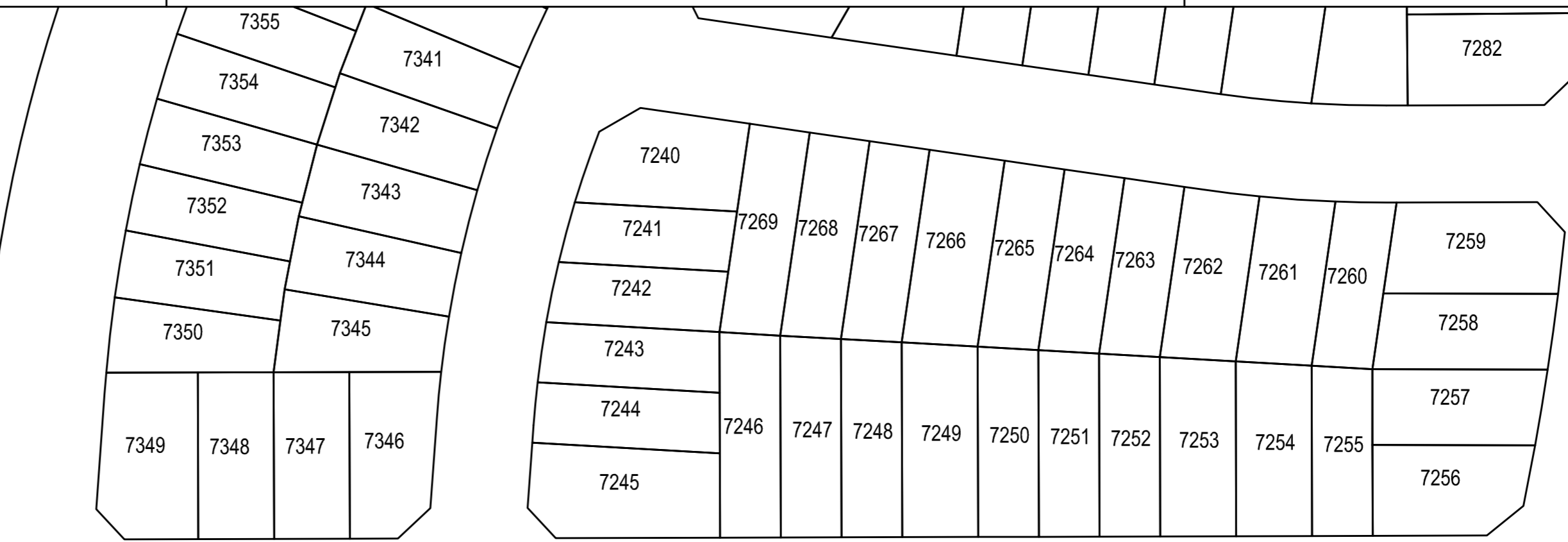
No	Bearing	Chord	Arc	Radius
1	90°10'40"	5.085	5.085	434.5
2	3°03'20"	1.495	1.495	40
3	91°17'55"	11.915	11.915	434.5
4	196°54'30"	0.28	0.28	449.6
5	195°59'15"	14.155	14.155	449.6
6	270°55'25"	15.805	15.805	418.5

SCHEDULE of LINES

No	Bearing	Distance	No	Bearing	Distance
7	144°07'00"	8.12	18	316°59'05"	6.8
8	48°16'15"	7.175	19	196°55'30"	6.71
9	4°07'40"	8.015	20	233°23'00"	8.045
10	46°59'05"	7.33	21	142°27'50"	7.945
11	316°59'05"	6.8	22	4°07'40"	7.97
12	196°55'30"	6.71	23	46°59'05"	7.33
13	233°23'00"	8.045	24	269°50'30"	6.74
14	143°23'00"	8.045	25	318°14'15"	6.96
15	269°50'30"	7.775	26	184°07'40"	6.76
16	4°07'40"	8.015	27	226°59'05"	7.33
17	46°59'05"	7.33	28	136°59'05"	6.8

(E1) EASEMENT TO DRAIN WATER 1.5 WIDE
 (E2) EASEMENT FOR ACCESS AND MAINTENANCE 0.9 WIDE
 (E21) EASEMENT FOR ACCESS AND MAINTENANCE 0.9 WIDE
 (E3) EASEMENT FOR PADMOUNT SUBSTATION 2.75 WIDE
 (R1) RESTRICTION ON THE USE OF LAND
 (R2) RESTRICTION ON THE USE OF LAND

7385



D.P. 1271004

DRAFT 08.02.21
 DIMENSIONS AND AREAS
 ARE SUBJECT TO FINAL SURVEY

SURVEYOR
 Name: Peter Robert Warwick
 Date: xxxxxxxx
 Reference: 20260-7C

PLAN OF SUBDIVISION OF
 LOTS 2 & 6 D.P.1271004
 AND EASEMENTS OVER LOT 4 D.P.1271004

L.G.A: BLACKTOWN
 Locality: MELONBA
 Reduction Ratio: 1: 800
 Lengths are in metres

REGISTERED

D.P.1261155

SCHEDULE of CURVED BOUNDARIES

No	Bearing	Chord	Arc	Radius
1	18°58'15"	12.335	12.34	168.5
2	15°08'05"	10.22	10.22	168.5
3	11°40'40"	10.11	10.11	168.5
4	8°15'10"	10.04	10.04	168.5
5	5°20'10"	7.11	7.11	168.5
6	190°52'20"	10.175	10.175	449.6
7	189°25'00"	12.665	12.665	449.6
8	187°48'20"	12.615	12.615	449.6
9	186°21'00"	10.23	10.23	449.6
10	91°00'20"	8.45	8.45	208
11	93°53'50"	12.535	12.54	208
12	96°56'30"	9.565	9.565	208
13	278°09'50"	0.8	0.8	192
14	275°46'40"	15.015	15.02	192
15	271°41'25"	12.385	12.385	192
16	181°43'50"	10.185	10.185	449.6
17	180°17'05"	12.5	12.5	449.6
18	178°41'30"	12.5	12.5	449.6
19	177°16'00"	9.845	9.845	449.6
20	90°21'40"	1.955	1.955	108
21	93°48'25"	11.035	11.04	108
22	99°40'45"	11.095	11.1	108
23	105°34'00"	11.09	11.095	108
24	111°30'30"	11.3	11.305	108
25	115°13'00"	2.67	2.67	108
26	209°35'25"	2.1	2.1	184.5
27	207°37'30"	10.55	10.55	184.5
28	204°19'35"	10.695	10.695	184.5
29	201°00'15"	10.695	10.695	184.5
30	20°00'55"	11.185	11.185	239.5
31	22°41'30"	11.185	11.185	239.5
32	25°22'05"	11.185	11.185	239.5
33	28°03'35"	11.315	11.315	239.5
34	29°39'55"	2.1	2.1	239.5

SCHEDULE of CURVED BOUNDARIES

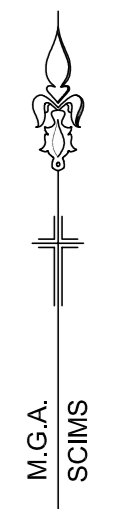
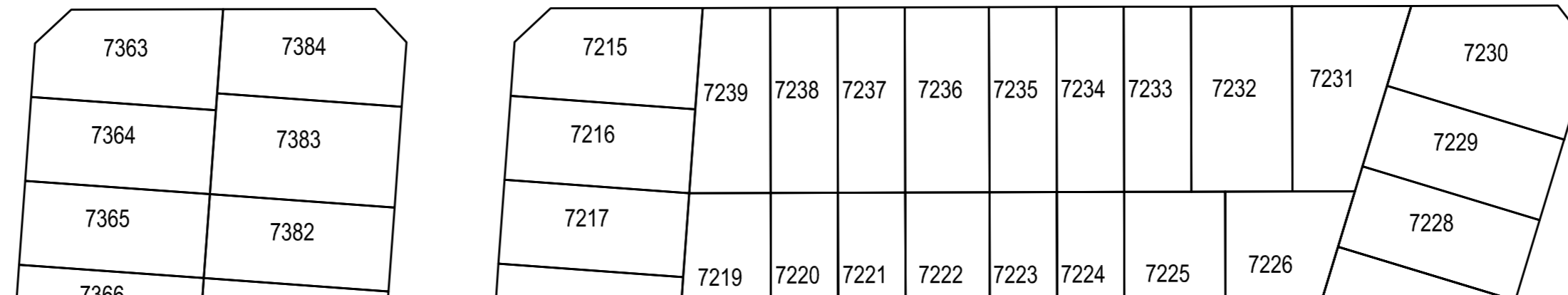
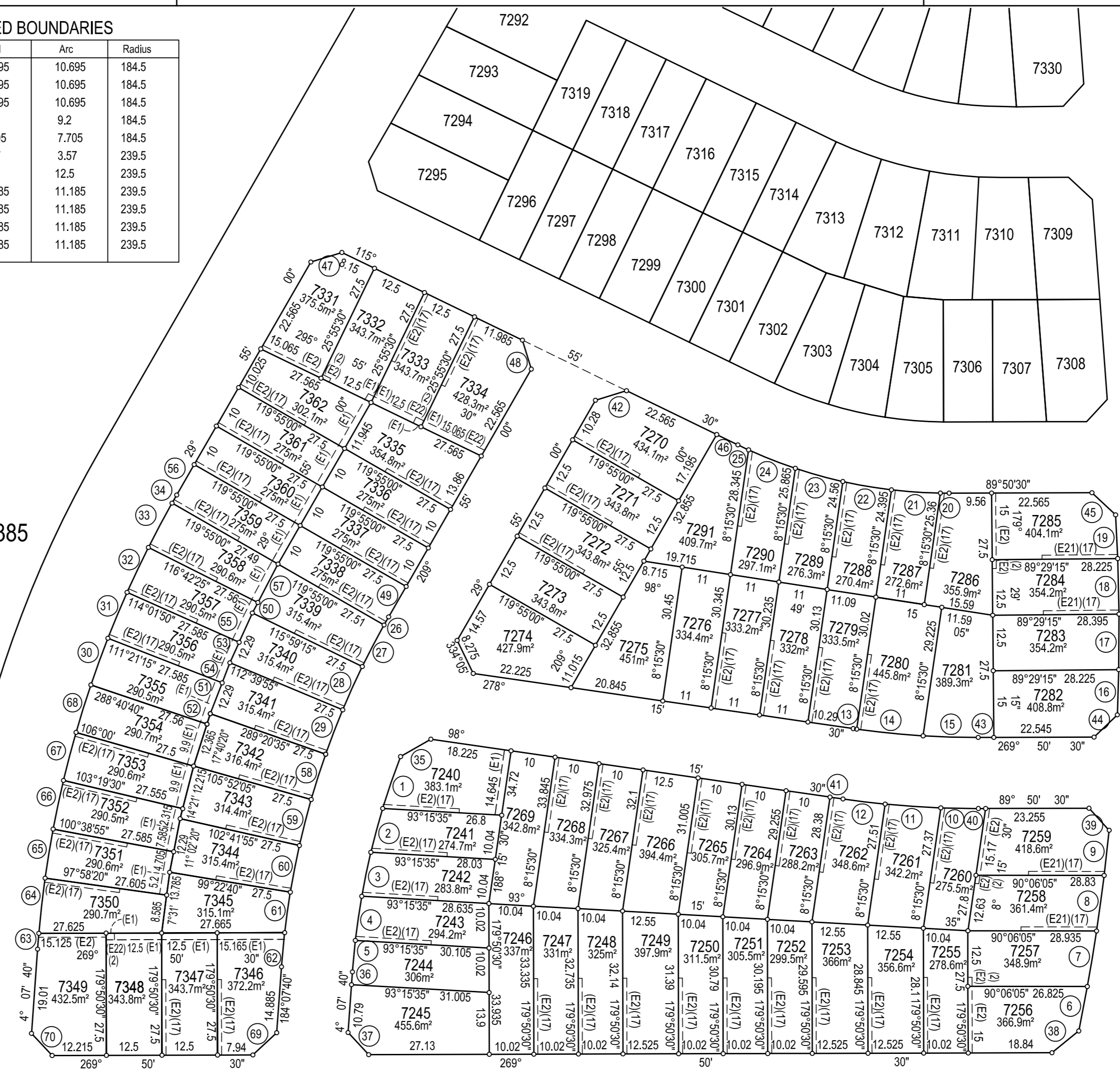
No	Bearing	Chord	Arc	Radius
58	197°40'55"	10.695	10.695	184.5
59	194°21'35"	10.695	10.695	184.5
60	191°02'20"	10.695	10.695	184.5
61	187°56'55"	9.2	9.2	184.5
62	185°19'25"	7.705	7.705	184.5
63	4°33'15"	3.57	3.57	239.5
64	6°28'40"	12.5	12.5	239.5
65	9°18'40"	11.185	11.185	239.5
66	11°59'15"	11.185	11.185	239.5
67	14°39'45"	11.185	11.185	239.5
68	17°20'20"	11.185	11.185	239.5

SCHEDULE of LINES

No	Bearing	Distance
35	60°05'20"	7.86
36	4°07'40"	2.895
37	316°59'05"	6.8
38	230°50'25"	7.77
39	137°36'40"	6.72
40	89°50'30"	1.635
41	98°15'30"	2.94
42	72°55'15"	7.315
43	269°50'30"	3.515
44	226°16'10"	7.245
45	133°04'55"	7.285
46	115°55'30"	5.285
47	72°55'15"	7.315
48	162°55'15"	6.82
49	209°55'00"	7.9
50	27°37'10"	2.665
51	201°00'15"	7.44
52	197°40'20"	2.465
53	204°19'35"	5.05
54	201°00'15"	4.85
55	204°19'35"	7.24
56	29°55'00"	7.9
57	27°37'10"	9.775
59	226°59'05"	7.33
70	316°59'05"	6.8

(E1) EASEMENT TO DRAIN WATER 1.5 WIDE
 (E2) EASEMENT FOR ACCESS AND MAINTENANCE 0.9 WIDE
 (E21) EASEMENT FOR ACCESS AND MAINTENANCE 0.9 WIDE
 (E22) EASEMENT FOR ACCESS AND MAINTENANCE 1.5 WIDE
 (E4) EASEMENT TO DRAIN WATER (OVER WHOLE LOT)
 (E5) RIGHT OF ACCESS (OVER WHOLE LOT)

DRAFT 08.02.21
 DIMENSIONS AND AREAS
 ARE SUBJECT TO FINAL SURVEY



D.P. 1271004

(E4)
(E5)

SURVEYOR Name: Peter Robert Warwick Date: xxxxxxxx Reference: 20260-7C	PLAN OF SUBDIVISION OF LOTS 2 & 6 D.P.1271004 AND EASEMENTS OVER LOT 4 D.P.1271004	L.G.A: BLACKTOWN	REGISTERED	D.P.1261155
		Locality: MELONBA		
		Reduction Ratio: 1: 800		
		Lengths are in metres		

SCHEDULE of CURVED BOUNDARIES

No	Bearing	Chord	Arc	Radius
1	295°29'55"	1.37	1.37	92
2	291°00'50"	13.02	13.035	92
3	282°54'55"	13.02	13.035	92
4	274°41'55"	13.235	13.245	92
5	270°13'00"	1.205	1.205	92
6	91°27'05"	4.945	4.945	88
7	96°41'40"	11.15	11.16	88
8	103°57'40"	11.15	11.16	88
9	111°08'35"	10.895	10.905	88
10	115°18'30"	1.895	1.895	88
11	291°44'40"	10.495	10.505	72
12	282°30'05"	12.705	12.725	72
13	273°38'25"	9.54	9.55	72

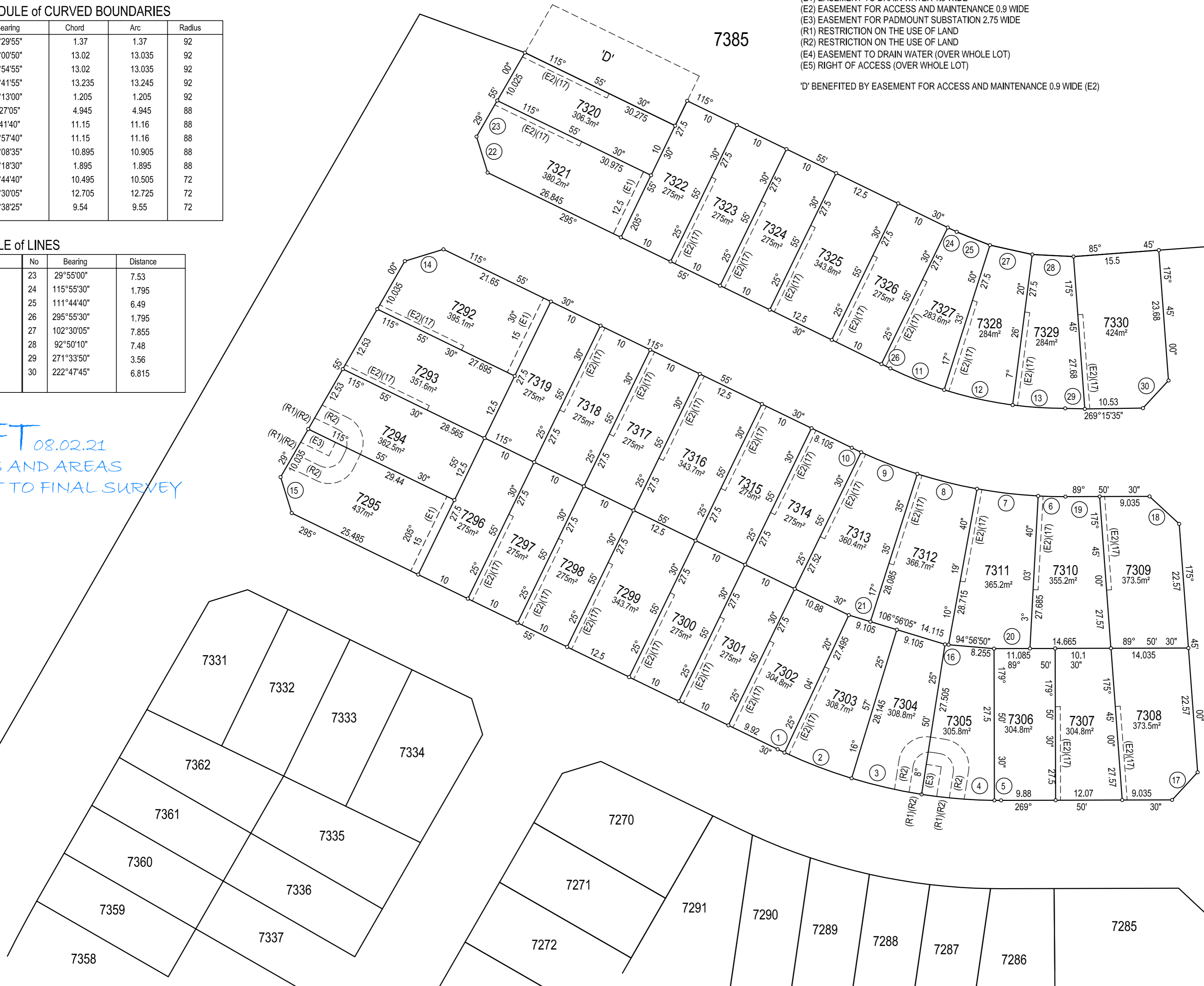


SCHEDULE of LINES

No	Bearing	Distance	No	Bearing	Distance
14	72°55'15"	7.315	23	29°55'00"	7.53
15	342°55'15"	6.82	24	115°55'30"	1.795
16	94°56'55"	0.665	25	111°44'40"	6.49
17	222°47'45"	6.815	26	295°55'30"	1.795
18	132°47'45"	7.32	27	102°30'05"	7.855
19	89°50'30"	6.2	28	92°50'10"	7.48
20	269°50'30"	6.52	29	271°33'50"	3.56
21	286°56'00"	4.1	30	222°47'45"	6.815
22	342°55'15"	6.82			

DRAFT 08.02.21
 DIMENSIONS AND AREAS
 ARE SUBJECT TO FINAL SURVEY

(E1) EASEMENT TO DRAIN WATER 1.5 WIDE
 (E2) EASEMENT FOR ACCESS AND MAINTENANCE 0.9 WIDE
 (E3) EASEMENT FOR PADMOUNT SUBSTATION 2.75 WIDE
 (R1) RESTRICTION ON THE USE OF LAND
 (R2) RESTRICTION ON THE USE OF LAND
 (E4) EASEMENT TO DRAIN WATER (OVER WHOLE LOT)
 (E5) RIGHT OF ACCESS (OVER WHOLE LOT)
 'D' BENEFITED BY EASEMENT FOR ACCESS AND MAINTENANCE 0.9 WIDE (E2)



D.P. 1271004

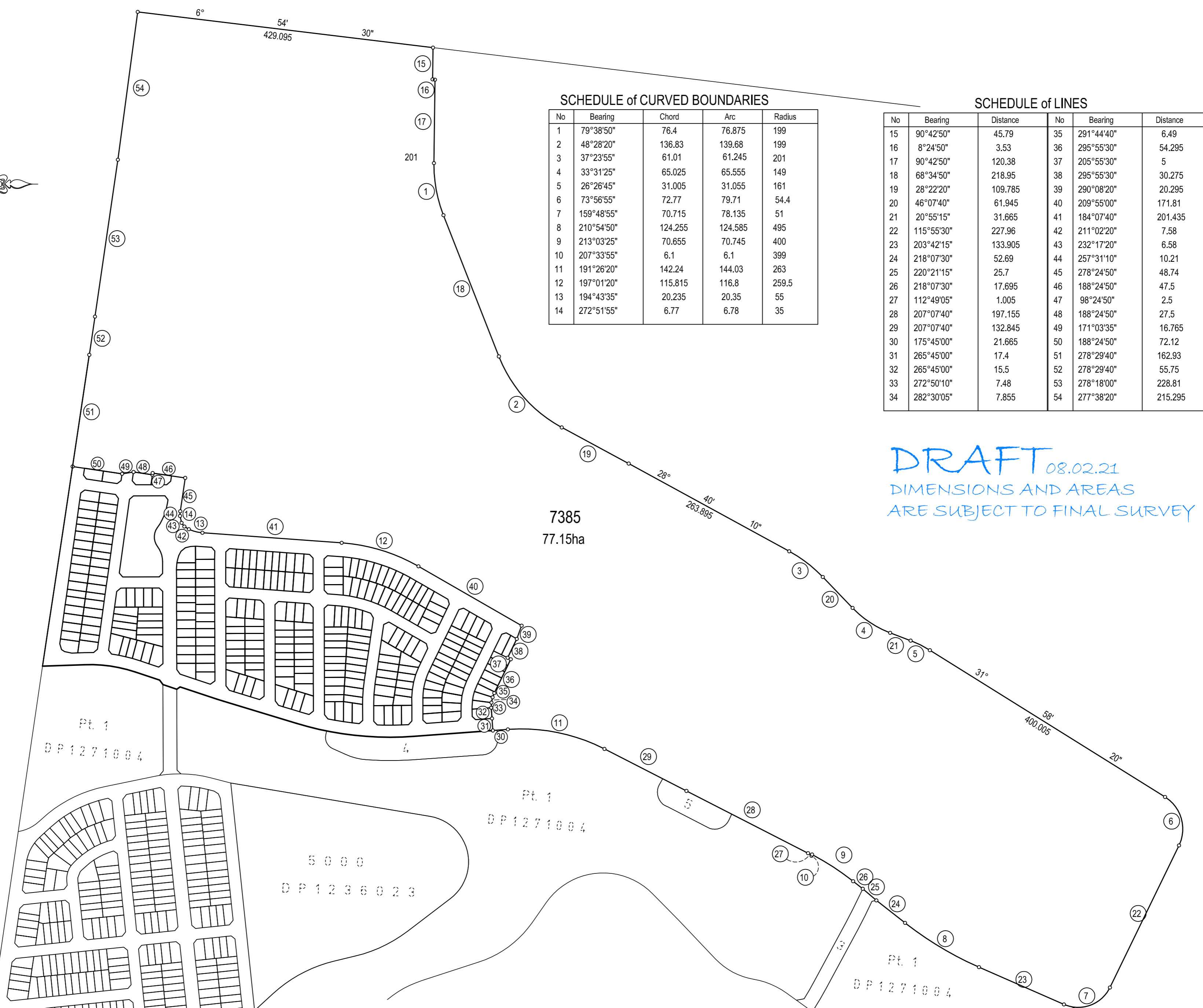
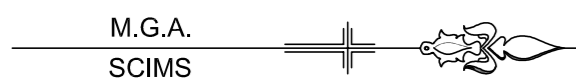
SURVEYOR
 Name: Peter Robert Warwick
 Date: xxxxxxxx
 Reference: 20260-7C

PLAN OF SUBDIVISION OF
 LOTS 2 & 6 D.P.1271004
 AND EASEMENTS OVER LOT 4 D.P.1271004

L.G.A: BLACKTOWN
 Locality: MELONBA
 Reduction Ratio: 1: 500
 Lengths are in metres

REGISTERED

D.P.1261155



SCHEDULE of CURVED BOUNDARIES

No	Bearing	Chord	Arc	Radius
1	79°38'50"	76.4	76.875	199
2	48°28'20"	136.83	139.68	199
3	37°23'55"	61.01	61.245	201
4	33°31'25"	65.025	65.555	149
5	26°26'45"	31.005	31.055	161
6	73°56'55"	72.77	79.71	54.4
7	159°48'55"	70.715	78.135	51
8	210°54'50"	124.255	124.585	495
9	213°03'25"	70.655	70.745	400
10	207°33'55"	6.1	6.1	399
11	191°26'20"	142.24	144.03	263
12	197°01'20"	115.815	116.8	259.5
13	194°43'35"	20.235	20.35	55
14	272°51'55"	6.77	6.78	35

SCHEDULE of LINES

No	Bearing	Distance	No	Bearing	Distance
15	90°42'50"	45.79	35	291°44'40"	6.49
16	8°24'50"	3.53	36	295°55'30"	54.295
17	90°42'50"	120.38	37	205°55'30"	5
18	68°34'50"	218.95	38	295°55'30"	30.275
19	28°22'20"	109.785	39	290°08'20"	20.295
20	46°07'40"	61.945	40	209°55'00"	171.81
21	20°55'15"	31.665	41	184°07'40"	201.435
22	115°55'30"	227.96	42	211°02'20"	7.58
23	203°42'15"	133.905	43	232°17'20"	6.58
24	218°07'30"	52.69	44	257°31'10"	10.21
25	220°21'15"	25.7	45	278°24'50"	48.74
26	218°07'30"	17.695	46	188°24'50"	47.5
27	112°49'05"	1.005	47	98°24'50"	2.5
28	207°07'40"	197.155	48	188°24'50"	27.5
29	207°07'40"	132.845	49	171°03'35"	16.765
30	175°45'00"	21.665	50	188°24'50"	72.12
31	265°45'00"	17.4	51	278°29'40"	162.93
32	265°45'00"	15.5	52	278°29'40"	55.75
33	272°50'10"	7.48	53	278°18'00"	228.81
34	282°30'05"	7.855	54	277°38'20"	215.295

DRAFT 08.02.21
 DIMENSIONS AND AREAS
 ARE SUBJECT TO FINAL SURVEY

SURVEYOR
 Name: Peter Robert Warwick
 Date: xxxxxxxx
 Reference: 20260-7C

PLAN OF SUBDIVISION OF
 LOTS 2 & 6 D.P.1271004
 AND EASEMENTS OVER LOT 4 D.P.1271004

L.G.A: BLACKTOWN
 Locality: MELONBA
 Reduction Ratio: 1: 4000
 Lengths are in metres

REGISTERED

D.P.1261155