



# Bella Rise

---

E S T A T E

Stage 1-2: 181-213 Garfield Rd, Riverstone, NSW 2765

Stage 3: 27 Campbell St, Riverstone, NSW 2765





# DESIGN A BRIGHTER FUTURE

The perfect place to raise your family and a wonderful place to invest, Bella Rise lies at the heart of Riverstone within a renowned growth corridor.

A masterplanned community of the highest calibre, Bella Rise has been designed to provide exceptional lifestyle opportunities for both owner-occupiers and investors. Complete with onsite childcare, the estate comprises flexible options for buyers. There's the choice of either premier land blocks or quality house & land packages.





## A PRIME CENTRAL POSITION

Bella Rise is the first of the new land releases in Riverstone. Unbeatably convenient, it lies within easy strolling distance of Riverstone's town centre, which retains a welcoming village appeal.

Occupying a prime position on Garfield Road, Bella

Rise is just a brief walk to rail, shops, dining options and beautiful local parklands. Riverstone's family friendly nature is evidenced by the abundance of renowned schools, with Riverstone Public, St John's Primary, Norwest Christian College and Riverstone High School all nearby. It's wonderfully close to

major centres such as Rouse Hill, Marsden Park and the thriving commercial hub of Sydney Business Park, home to leading enterprises such as Costco and IKEA, and an important source of employment. Local medical facilities such as Norwest Private Hospital are highly regarded.



# Masterplan



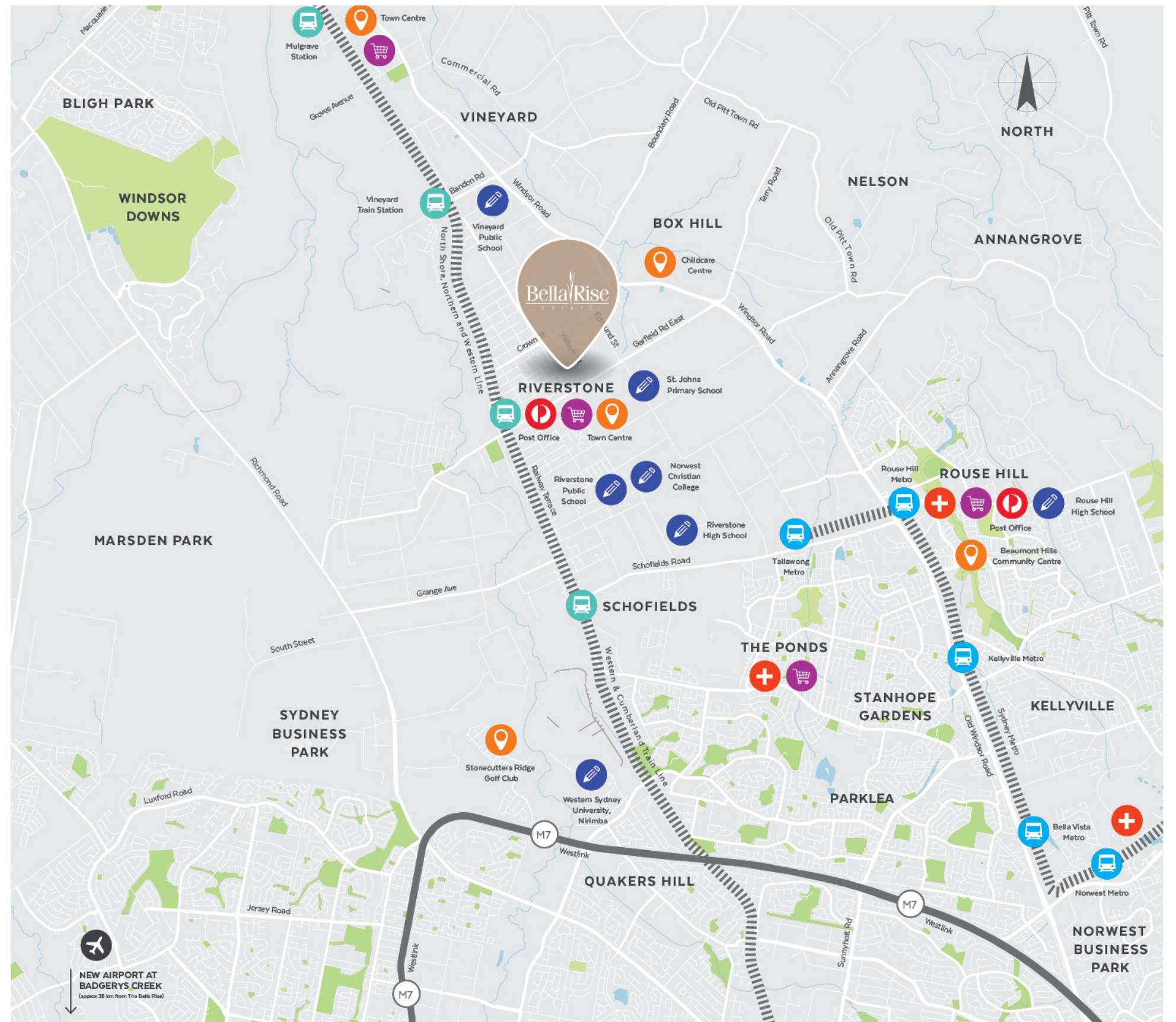
- KEY**
- Stage One
  - Stage Two
  - Stage Three
  - Future Residential
  - Existing Residential
  - Electrical Substation



# ON THE MOVE

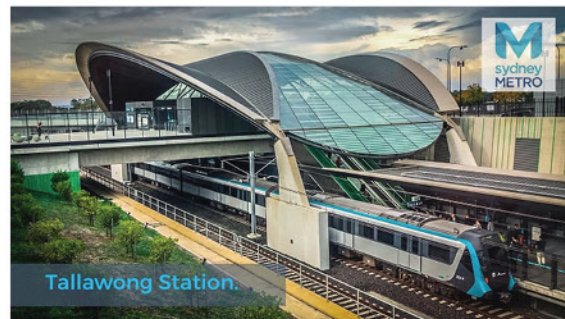
Bella Rise takes centre stage for the wonderful revitalisation planned for Riverstone, making it more exciting, dynamic and accessible.

Riverstone has been highlighted as one of the Top 10 Suburbs to take off in the next few years by national real estate commentators. Under Blacktown Council's Masterplan, the Riverstone Town Centre is poised for transformation into a thriving hub that allows for future growth. In addition to this, Riverstone benefits essentially from major infrastructure investment. The completed Sydney Metro Northwest has created better connectivity. And the nearby Tallawong station, with 1,000 car parking spaces, with the line takes you to the CBD in just 45 minutes. A \$550 million upgrade of the Hills M2 Motorway will also improve commuting time to Sydney city.





# BRING YOUR VISION TO LIFE



Choose your parcel of land then build your ultimate residence using the builder of your choice, or select from one of our exceptional house & land packages.

Featuring an expansive street frontage along Garfield Road, Bella Rise has been carefully planned to achieve the most liveable, inviting community possible. Highly engineered landscaping creates a beautiful environment in which to build your new home to your exact specifications, with a variety of lot sizes to suit your aspirations and budget. For those who opt for a house & land package, expect outstanding construction, deluxe finishes and excellent value.

# THE GOLDMATE ADVANTAGE



We're proud of the role we play in helping more families live the Australian dream of building and owning homes, joining vibrant communities and being part of the future of shaping outstanding new local areas. By 2019, we have contributed more than 900 properties to the priority growth areas of North West Sydney – from land lots to community homes.

Our core focus itself is on the establishment of masterplanned estates that reward both families and investors alike. These estates are where we expertly plan to provide the best living experience possible for families. With excellent amenities from schools, shops and entertainment, to outstanding transport links and access to major highways --- it's no wonder so many are now enjoying the Goldmate way of life.

We're committed and conscious community players. We have dedicated engineers and project managers who live and work amongst our projects. Our approach is unique. Every single site is carefully researched and thought out in a way of benefiting both people and place. We protect from environmental issues and we ensure that every finished lot is builder ready. Our reach is extensive and our buying power significant. This enables us to work with the best builders, award-winning architects and discerning designers who'll bring to life projects of brilliant calibre with best in class inclusions.





[BELLARISE.COM.AU](http://BELLARISE.COM.AU)



**GOLDMATE**

The information and images in this document are intended as an introduction to the general content of the project only and interested parties should rely on their own enquiries. Goldmate, its officers, employees, subcontractors, agents and related bodies corporate expressly disclaim any liability and responsibility (except to the extent that liability under statute or by operation of law cannot be excluded) to any person for any loss, liability, damage or expense arising directly or indirectly from or connected in any way with any use of or reliance on the information contained within this document. All computer generated images in this document are artists impressions only and the final form of the project is subject to change. Branding and design by: [www.brandandco.com.au](http://www.brandandco.com.au)