



**BELMONT RESERVE**  
HOLMVIEW

**LIFESTYLE**

## WILSON 192 H1

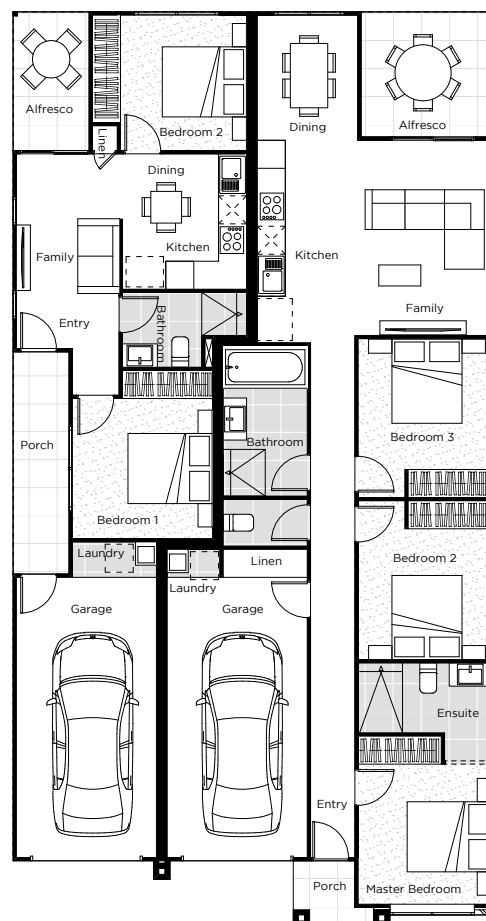
3+2 2+1 1+1 1+1

### SPLIT CONTRACT

|                         |                   |
|-------------------------|-------------------|
| <b>LOT NO:</b>          | 29                |
| <b>STAGE:</b>           | 1                 |
| <b>HOUSE DESIGN:</b>    | Wilson 192 H1     |
| <b>HOUSE SIZE:</b>      | 192m <sup>2</sup> |
| <b>LAND SIZE:</b>       | 329m <sup>2</sup> |
| <b>ESTATE:</b>          | Belmont Reserve   |
| <b>REGION:</b>          | Holmview, Logan   |
| <b>RENTAL ESTIMATE:</b> | \$630-\$700**/wk  |
| <b>BUILD PRICE:</b>     | \$314,900         |
| <b>LAND PRICE:</b>      | \$290,000         |
| <b>PACKAGE PRICE:</b>   | <b>\$604,900</b>  |

### DESIGN FEATURES

- 20mm stone benchtops to kitchen
- 2440mm ceiling heights
- TECHNIKA stainless steel appliances
- Quality carpet throughout
- 600mm x 600mm rectified porcelain tiles
- Reverse split system airconditioning (as nominated on plans)
- LED downlights and fans to bedrooms with light
- COLORBOND roof
- Driveway, turf to rear and front
- Clothesline, letterbox, antennae, flyscreen's and blinds



Dwelling 2

Dwelling 1



**Disclaimer:** Renders, floor plans and images are for illustration purposes only, and should only be used as a guide. These may contain fixtures, furniture, landscaping and decorative finishes not offered by Homecorp Constructions in this specific design. Please refer to house specific drawings for accurate details. Please note that unless contracts have been issued or deposit received, prices and availability are subject to change without notice. **\*\* NOTE:** These are estimates only, provided by independent managing agents and regularly updated following market conditions.

**Homecorp**  
CONSTRUCTIONS