



- ☒ White Square Inclusions
- ☒ Standard Landscaping
- ☒ Fixed Site Costs*

NOW \$994,990*

House Price: \$399,990* | Land Price: \$595,000*

House Size: 189.03m² | Land Size: 467.2m²

 4  2.5  2

Lot 209

104 Menin Road, Oakville

Expected Registration: Sept 22

Feature Inclusions

24 month tender period guarantee

2600mm ceilings to the ground floor

Floor coverings

Actron® ducted air conditioning

Blinds and antenna

Smartstone® kitchen benchtops

900mm cooktop and canopy rangehood

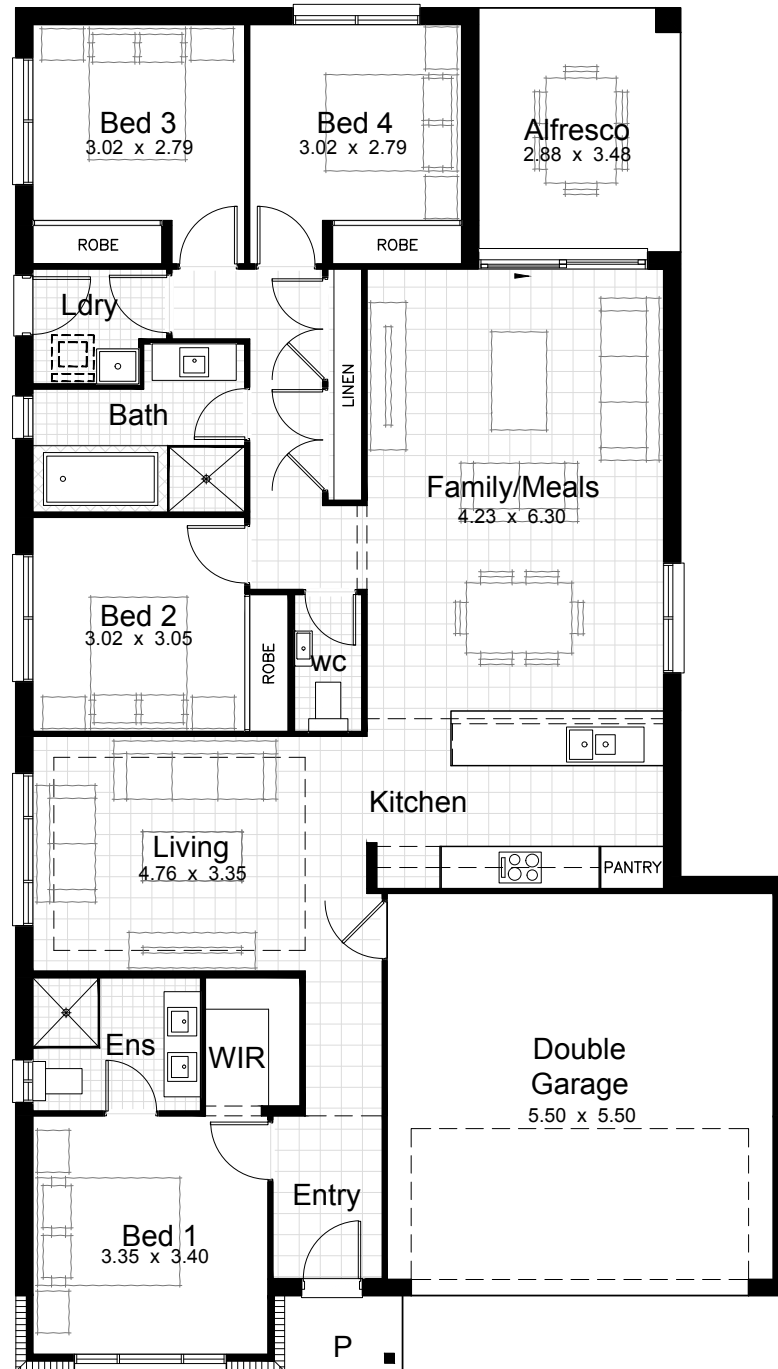
Dishwasher

Light fittings

Auto garage door

Driveway

Fencing



© ALL RIGHTS RESERVED.

Product Code: WS-S068 Evoke S068-047

Revision Date: 04/03/2021

* Note the Construction and Home Contract will be with Elderton Homes. White Square and Elderton Homes reserve the right to alter any of the specifications due to continuing product development and/or availability. Information correct as at 04/03/2021 and is based on the White Square Zone 1 Region Price list dated 2/11/2020. Fixed Site costs* are based on developer provided contours and would be subject to validation and variation based on individual developer contours, and are subject to land registration, receipt of full contour survey, Geotechnical report, service locations, 10.7 certificates, 88b instrument, BAL and compliance to applicable codes and planning controls and encumbrances. Please speak to a White Square Consultant to discuss in detail the home pricing for different designs, inclusions and lot specific site costs. Photographs and other pictures in this brochure may show fixtures, fittings or finishes which are not supplied as part of this package, or which are only available in some designs or when selected as inclusions above the White Square Inclusions. This may include landscaping and outdoor items, floor coverings, furniture, kitchen objects, bathroom and light fittings, and decorative items which are shown as examples only. At any time, we may increase prices or fees, amend our products or suppliers, and correct any inaccuracies or erroneous part of our information. Artist impressions are used for illustrative purposes only. Actual home colours, materials, and finishes may vary. You must contact us to receive up-to-date information. White Square and Elderton Homes reserve the right to revise plans, specifications and facades without notice or obligation. All floorplans and sizes depict the Evoke Facade. Alternatively, Speak to a White Square Consultant for more information. Elderton Homes ABN: 33138413902. Builders Licence: 218678C