

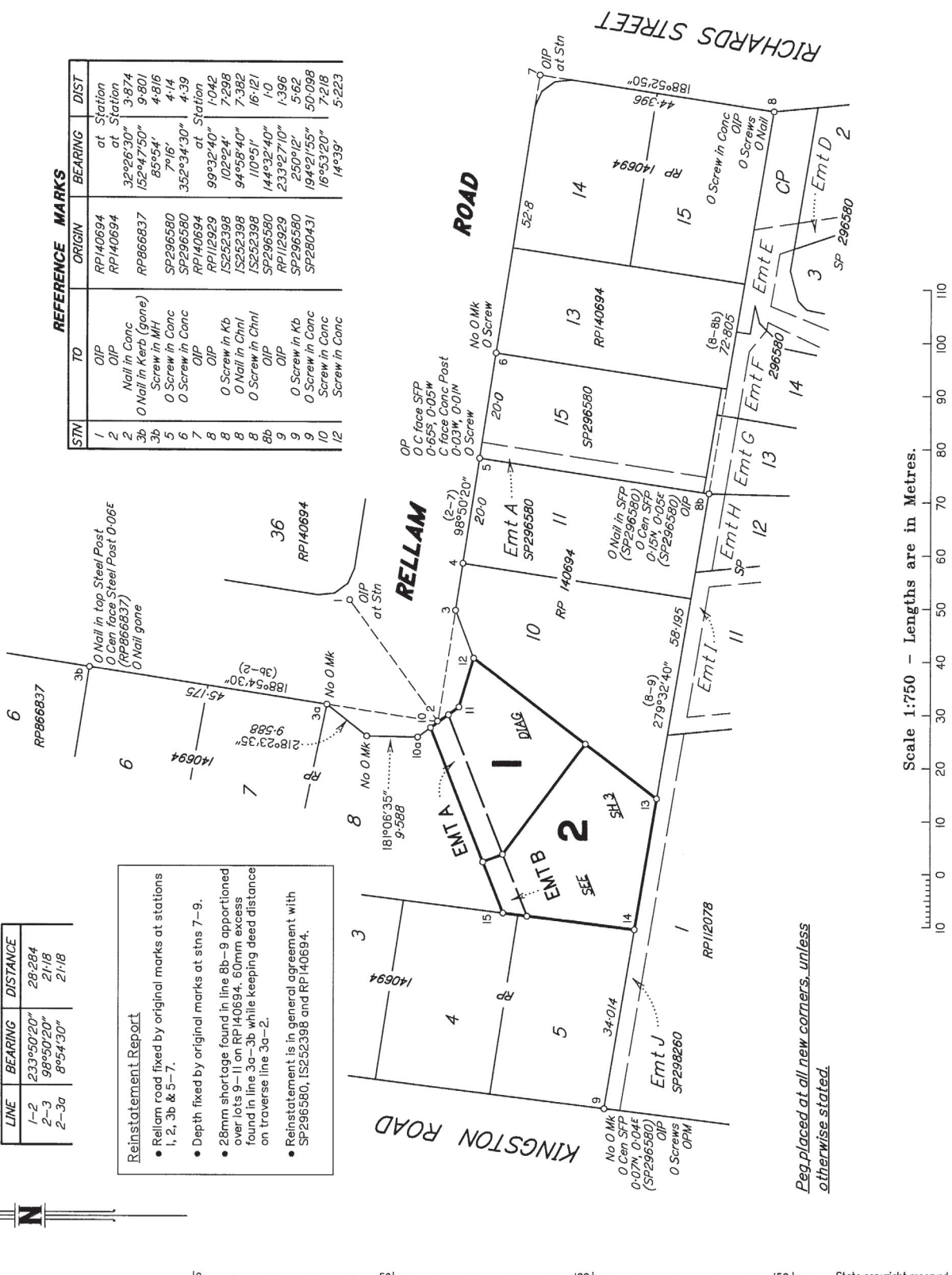
PERMANENT MARKS					
PM	ORIGIN	BEARING	DIST	NO	TYPE
9-OPM	SP296580	299°45'45"	69.17	50089	

REFERENCE MARKS					
STN	TO	ORIGIN	BEARING	DIST	TYPE
1	OIP	RP140694	at Station		
2	OIP	RP140694	at Station		
3a	Nail in Conc		32°26'30"	3.874	
3b	O Nail in Kerb (gone)	RP866837	152°47'50"	9.801	
4	Screw in MH		85°54'	4.816	
5	O Screw in Conc	SP296580	7°16'	4.14	
6	O Screw in Conc	RP140694	352°34'30"	4.39	
7	OIP	RP140694	at Station		
8	OIP	RP112929	99°32'40"	1.042	
8	O Screw in Kb	IS252398	102°24'	7.298	
8	O Nail in Chnl	IS252398	94°58'40"	7.382	
8	O Screw in Chnl	IS252398	110°51'	16.121	
8b	OIP	SP296580	144°32'40"	1.0	
9	OIP	RP112929	233°27'10"	1.396	
9	O Screw in Kb	SP296580	250°12'	5.62	
9	O Screw in Conc	SP296580	194°21'55"	50.098	
10	Screw in Conc	SP280431	16°53'20"	7.218	
12	Screw in Conc		14°39'	5.223	

TRAVERSES ETC	
LINE	DISTANCE
1-2	233°50'20"
2-3	98°50'20"
2-3a	8°54'50"
2-3b	211.8
2-3c	211.8

Reinstatement Report

- Reilam road fixed by original marks at stations 1, 2, 3b & 5-7.
- Depth fixed by original marks at stns 7-9.
- 28mm shortage found in line 8b-9 apportioned over lots 9-11 on RP140694, 60mm excess found in line 3a-3b while keeping deed distance on traverse line 3a-2.
- Reinstatement is in general agreement with SP296580, IS252398 and RP140694.



Scale 1:750 - Lengths are in Metres.

Req placed at all new corners, unless otherwise stated.

SOUTH BURNETT SURVEYS PTY LTD (ABN 26 010 622 189)
(t/a ONF Surveyors)
hereby certify that the land comprised in this plan was surveyed by the corporation, by Trevor Dean DHAMU, Surveying Associate, for whose work the corporation accepts responsibility, under the supervision of Howard John CUTLER, Cadastral Surveyor, and that the plan is accurate, that the said survey was performed in accordance with the Survey and Mapping Infrastructure Act 2003 and Surveyors Act 2003 and associated Regulations and Standards and that the said survey was completed on 16/11/2020.



Date 25/11/2020

0 50mm 100mm 150mm State copyright reserved.

Scale: 1:750
Format: STANDARD

**Plan of Lots 1 & 2,
Easement A in Lot 1 &
Easement B in Lot 2
Cancelling Lot 9 on RP140694**

LOCAL: LOGAN CITY
GOVERNMENT: COUNCIL
LOCALITY: LOGANLEA

Meridian: SP296580
Survey Records: No

SP318255