



# FULL TURN-KEY

Dual Key @ **\$560,100**

**LOT 3 (9-11) Logan Reserve Rd,  
Waterford West QLD**

## Duo 3 & 2 Auxiliary Unit

Land Size: 500.00 SQM

Unit 1 size: 120.70 SQM

Unit 2 size: 88.20 SQM

Total size: 206.90 SQM

Land Price: **\$265,000**

Construction price: **\$295,100**

Total Package Price: **\$560,100**



Artist Impression



3+2



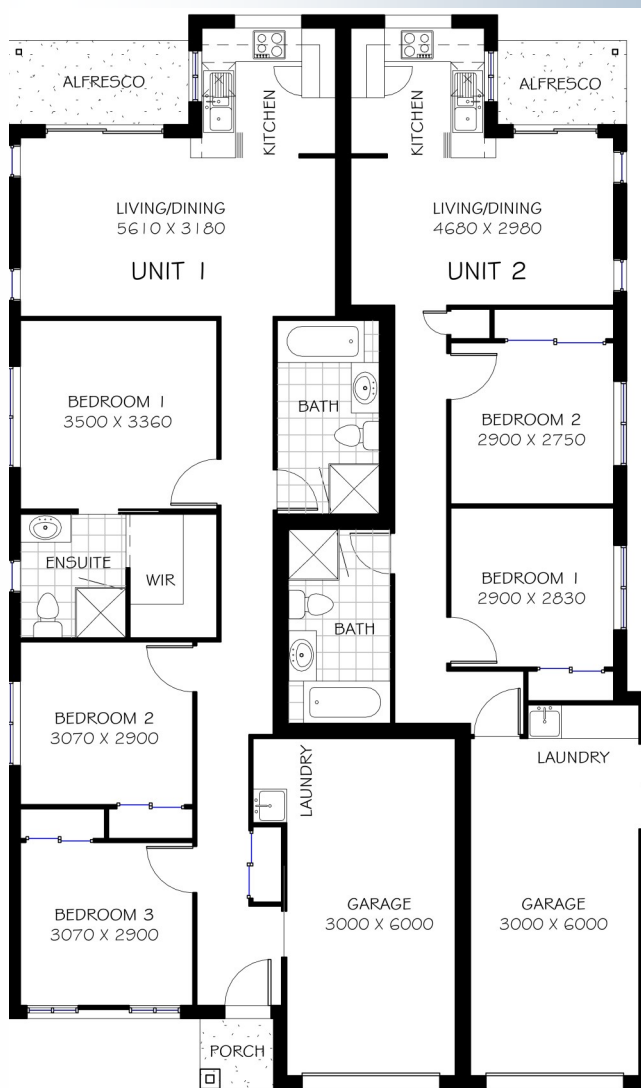
2+1 bath



2 garages

### Inclusions

- \* Dual Occupancy 3+2
- \* Brick veneer construction
- \* 6 star energy efficiency
- \* Turf & 12 SQM landscape gardens
- \* Fully fenced
- \* Concreted driveways, paths & patios
- \* Split to both units with remote controls
- \* Lever door handles throughout
- \* Fully painted with Taubmans quality paints
- \* Stainless Steel or black appliances
- \* Clothesline, TV antenna & letterbox
- \* Carpet & Tile throughout
- \* Vertical blinds to all windows
- \* Fly screens & window locks
- \* Security screen to external doors
- \* Fan light to bedrooms
- \* Garage remote controls
- \* 12Mth Maintenance period



(C) All plans, drawings and artist impressions are copyrighted to Aushomes Pty Ltd, Underwood, Brisbane 2014

