

# House & Land Package

Lot 6 Sharman Close Harrington Park - 457 | Split Contract - \$928,571



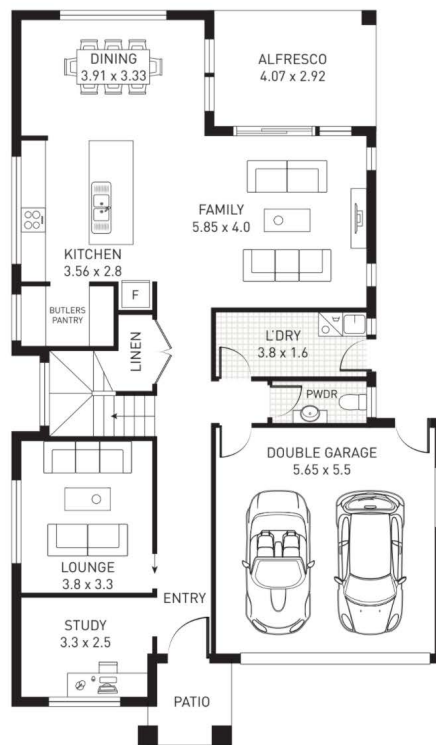
## The Montgomery 285

### Features

- 4 Star
- Connection
- Large Covered Tiled Alfresco
- Dusted A/C
- Stainless Steel Appliances
- Free-Standing Bath
- Coloured Concrete Driveway
- Termite Protection
- Stone Bench Top
- Floor Coverings Throughout
- Insurance

### Specifications

Ground Floor	115.75m <sup>2</sup>
First Floor Living	118.98m <sup>2</sup>
Garage	34.32m <sup>2</sup>
Alfresco	11.88m <sup>2</sup>
Porch	4.21m <sup>2</sup>
Total Home Area	285.14m <sup>2</sup>



GROUND FLOOR



FIRST FLOOR

Visit Our Website For Full Terms & Conditions

\*All Images are for illustrative purposes only and may not reflect the inclusions of this package. The Facade features shown may not accurately reflect the included facade. An update to these features may be available. Lic No 279361C

Home Design By: Simone Homes