



LOT 6102

LAND SIZE: 267.1 m²
HOUSE SIZE: 183.4 m²

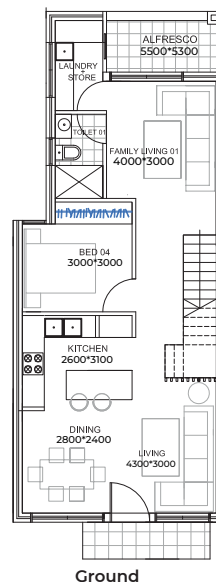
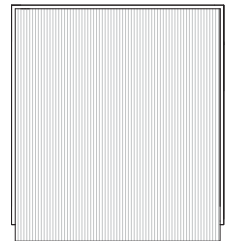
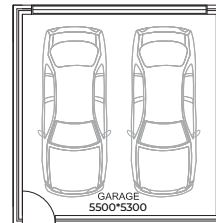
BARDIA
New Breeze

HOUSE PRICE \$365,000.00
LAND PRICE \$434,000.00
PACKAGE PRICE \$799,000.00

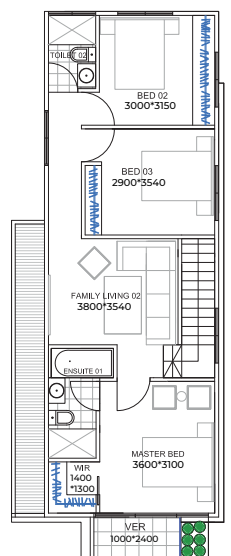
4 3 2

NEW HOME INCLUSIONS:

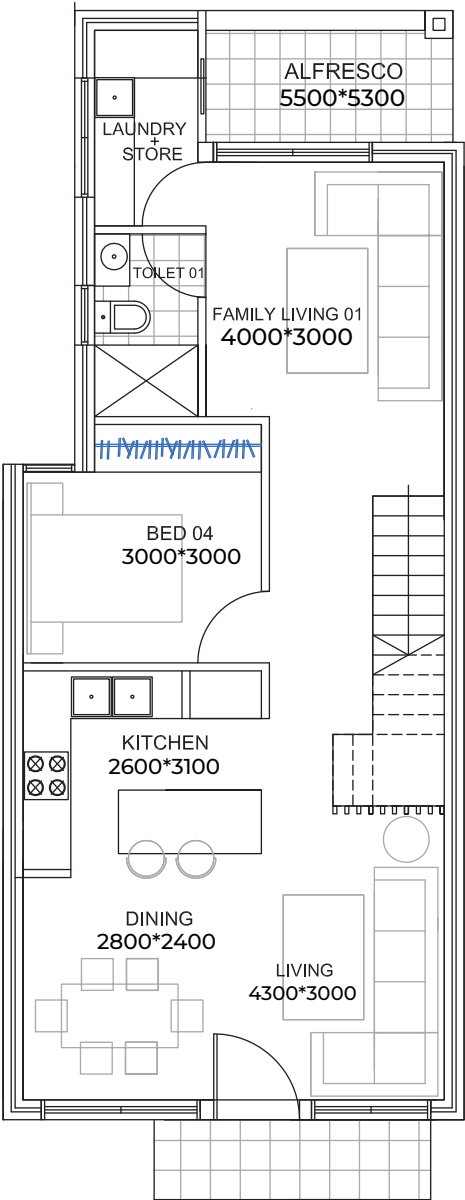
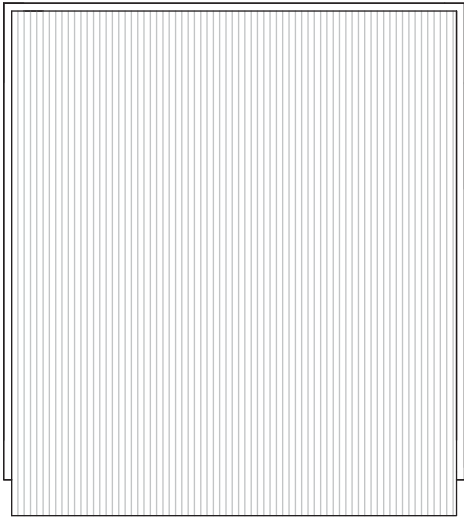
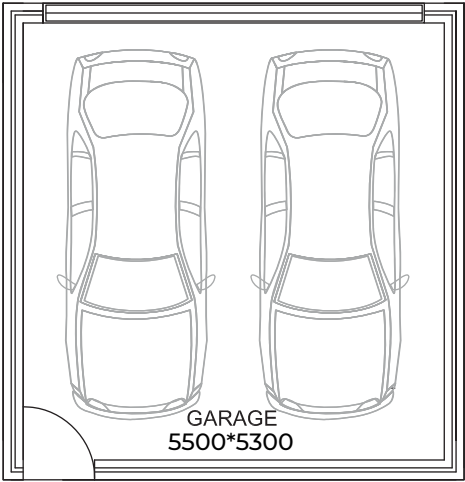
- ◆ Fixed price contract, fencing excluded
- ◆ 2.7 m ground floor ceiling height
- ◆ 2.5 m first floor ceiling height
- ◆ Premium brickwork and cladding
- ◆ Quality tiles in hallway, family and carpet in bedroom
- ◆ Monier/ Colorbond roof tiles
- ◆ 40mm stone benchtop to kitchen with soft close drawers and doors
- ◆ Niches to bathroom and ensuite shower
- ◆ 900mm stainless steel cooktop, oven and range hood
- ◆ 2-Zone ducted air conditioning
- ◆ 40 LED downlights throughout the home
- ◆ Double powerpoints to each room
- ◆ Coloured concrete driveway



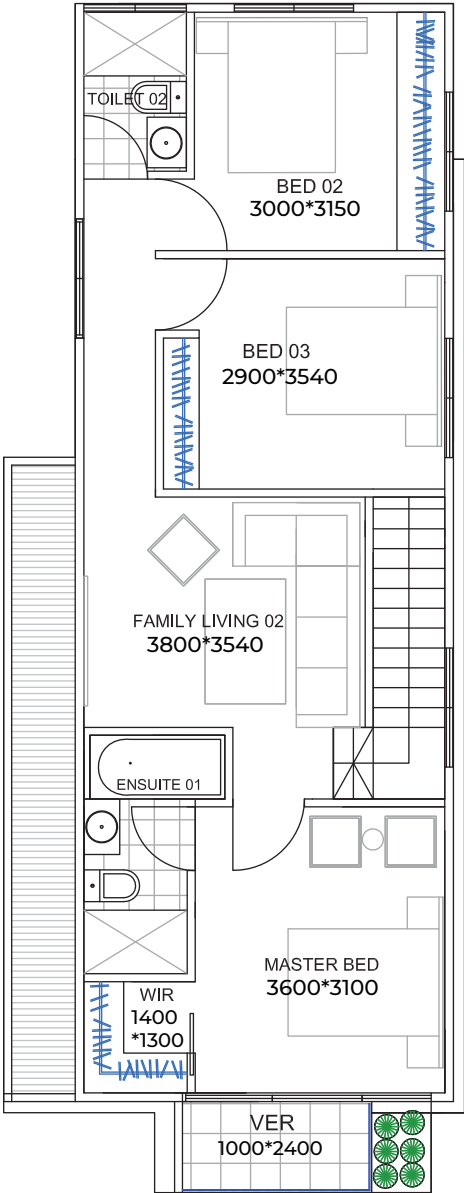
Ground



First



Ground



First

House Size	19.74 SQ
House Lot Width	7.11 m ²
Lot Length	38.70 m ²

INCLUSIONS

- Fixed site costs, no surprises
- 2700mm raised ground ceiling height
- 2-Zone ducted reverse Air Conditioner
- Dishwasher included
- 40mm stone benchtop to kitchen
- Fencing excluded
- Carpeted and tiled throughout
- Superior fittings and fixtures
- 40 LED downlights throughout
- Full tiling in wet areas to bathroom and ensuite
- Niches to bathroom and ensuite showers
- Tiled alfresco and patio
- Colour through concrete driveway
- Multi-coat paint system
- All homes include BASIX requirements
- Professionally selected external and internal colours and materials
- Stainless steel appliances with 1 year warranty
- Vanities to bathroom and ensuite on applicable plans
- Blinds included



DUCTED
AIRCONDITIONING



COMPLETE SETTLEMENT
PROCESS GUIDANCE



PROGRESS UPDATES



PROFESSIONAL COLOUR
SELECTION



5-STAR INCLUSIONS



BASIX RATED
ENERGY EFFICIENCY



THREE MONTH
DEFECT LIABILITY PERIOD



6 YEARS STRUCTURAL
WARRANTY



CUSTOMIZATION
AVAILABLE



NON TURN-KEY
FIXED PACKAGES