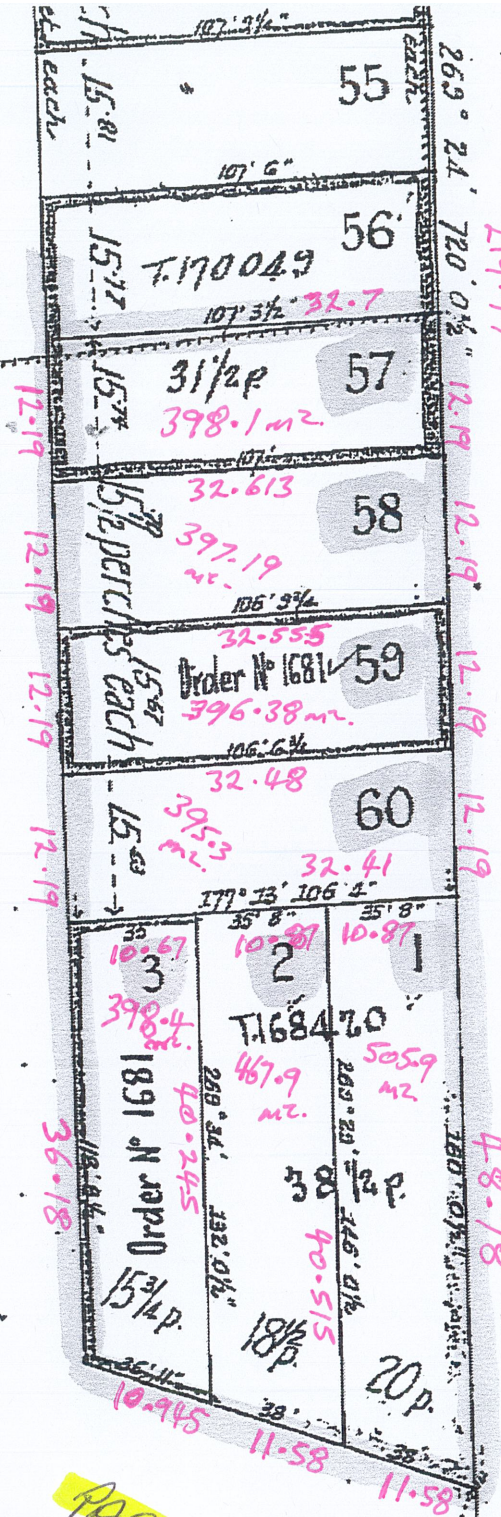


SMITH

9' 03"

SPRINT



219.47

48.78

APPROX. DIMENSIONS
AND SIZES:

SMITH

PAGES

ROAD

APPROX.
2,959.17 m2.
IN TOTAL:

2

E

Reg: R017201 / Doc: DP 0002488 P / Rev: 22-Jul-1992 / Sts: OK OK / Fgs: ALL / Prt: 29-Jan-2018 10:34 / Seq: 2 of 2
 Ref: 180017 / Src: M

CONVERSION TABLE ADDED IN REGISTRAR GENERAL'S DEPARTMENT
 OP 2488 CONTINUED

FEET INCHES		METRES
132	0 1/2	40.245
142	1	43.305
146	0 1/2	44.515
160	0 1/2	48.78
720	0 1/2	219.47

AC	RD	P	SQ M
-	-	12	303.5
-	-	12 3/4	322.5
-	-	13 3/4	347.8
-	-	14	354.1
-	-	14 1/4	360.4
-	-	15 1/2	392
-	-	15.63	395.3
-	-	15.67	396.3
-	-	15.7	397.1
-	-	15.74	398.1
-	-	15 3/4	398.4
-	-	15.77	398.9
-	-	15.78	399.1
-	-	15.81	399.9
-	-	15.84	400.6
-	-	15.86	401.1
-	-	15.88	401.6
-	-	15.9	402.2
-	-	15.91	402.4
-	-	15.92	402.7
-	-	15.94	403.2
-	-	15.95	403.4
-	-	15.96	403.7
-	-	15.98	404.2
-	-	16	404.7
-	-	16 1/4	411
-	-	16 1/2	417.3
-	-	17 3/4	448.9
-	-	18 1/2	467.9
-	-	20	505.9
-	-	25 3/4	651.3
-	-	31 1/2	796.7
-	-	31 3/4	803
-	-	32	809.4
-	-	38 1/2	973.6
-	-	1 3	1088
-	-	1 7 1/2	1201
-	-	1 23 1/4	1600
-	-	2 23 1/4	2511
-	-	32	6903

I, Bruce Richard Davies, Registrar General for New South Wales, certify that this negative is a photograph made as a permanent record of a document in my custody this 3rd day of August, 1979

24

ALISON STREET

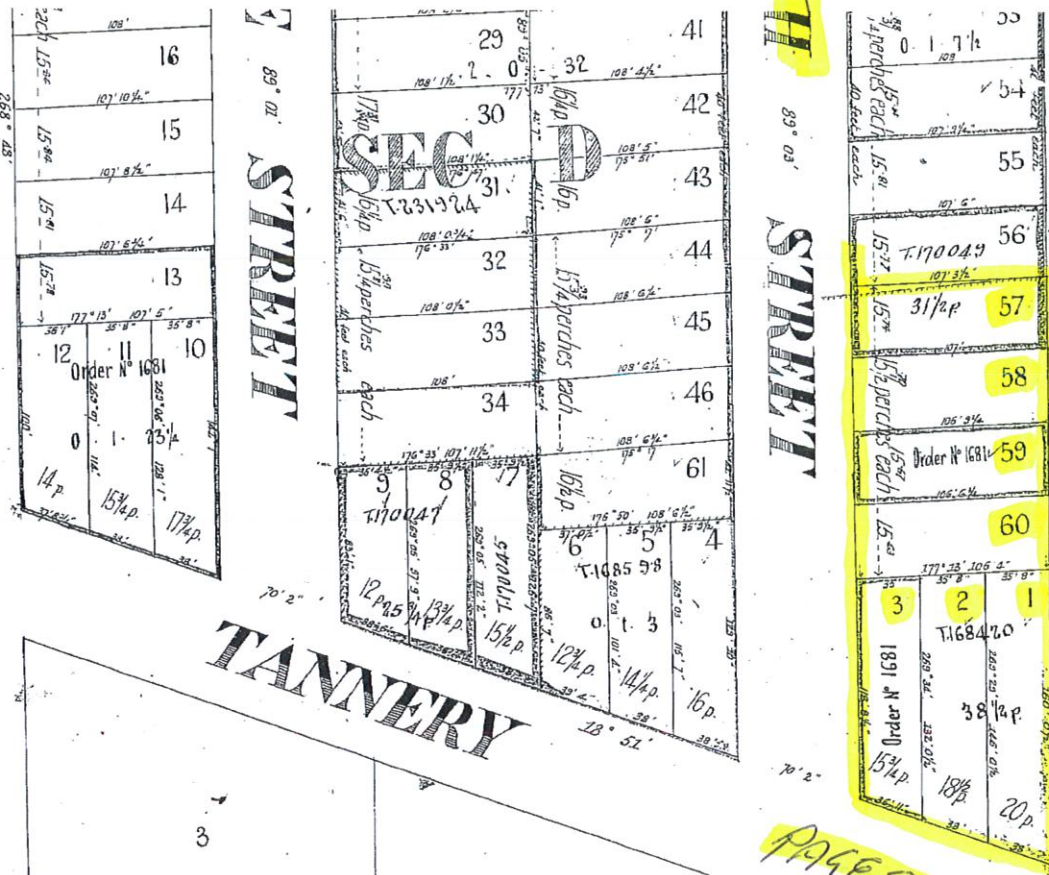
STREET

STREET

TANNERY

STREET

ROAD



(NOTE)
 The fences have been adopted as boundaries where practicable.

This is the Plan marked "A" referred to by Samuel Chatfield in his declaration of this day

Samuel Chatfield JP

Subscribed 2 Feb 1888

Scale 60 feet to an inch.

D.P. 2488

A.

Chatfield
 Licensed Surveyor (under R.P. Act)
 2nd February 1888.