

Preston 23

lot 638

An impressive terrace of generous proportions, growing families will love its four bedrooms, versatile living spaces and a double garage. As you enter, the lounge welcomes you home. As you make your way to the back of the home, gaze out to the alfresco from the open plan living, dining and kitchen. Parents can retreat into a cleverly designed master suite, while three other bedrooms and a large bathroom complete your dream home, a reality you can afford.

\$615,000

Colour Scheme
Pure

Land 210m²

4 bed **3** bath **2** car

23 SQ

Ground Floor	82.35m ²
First Floor	79.46m ²
Garage	36.18m ²
Porch Area	3.02m ²
Alfresco	10.20m ²
Total	211.21m²

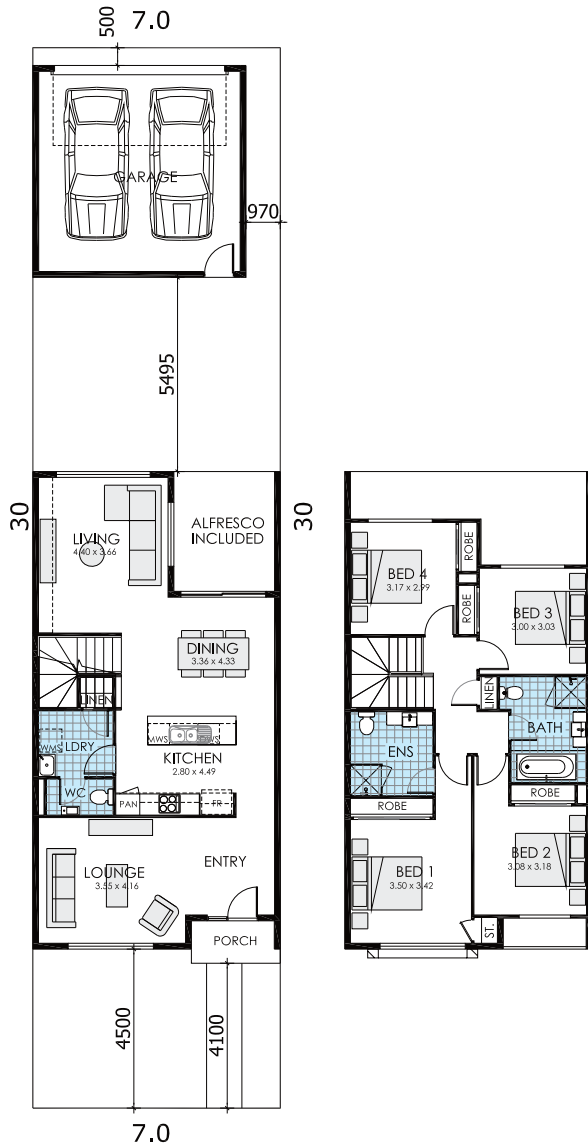


Image artists impression only