



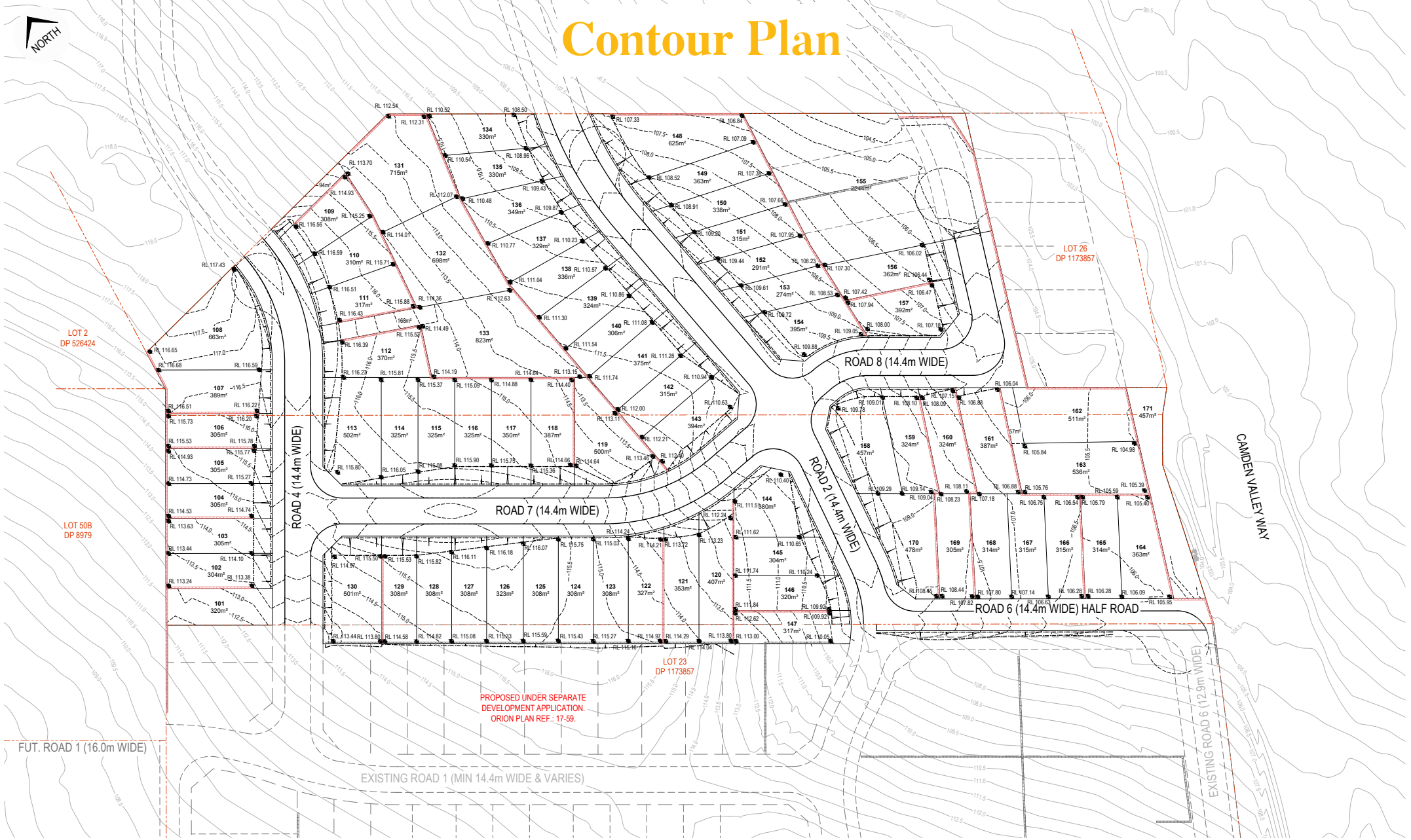
The  
**Outlook**

AT LEPPINGTON

# Release Plan



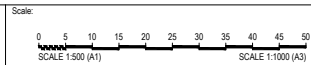
# Contour Plan



**SKETCH**  
NOT FOR CONSTRUCTION

SPOT HEIGHTS

Revision	Drawn	Design	Appd	Date



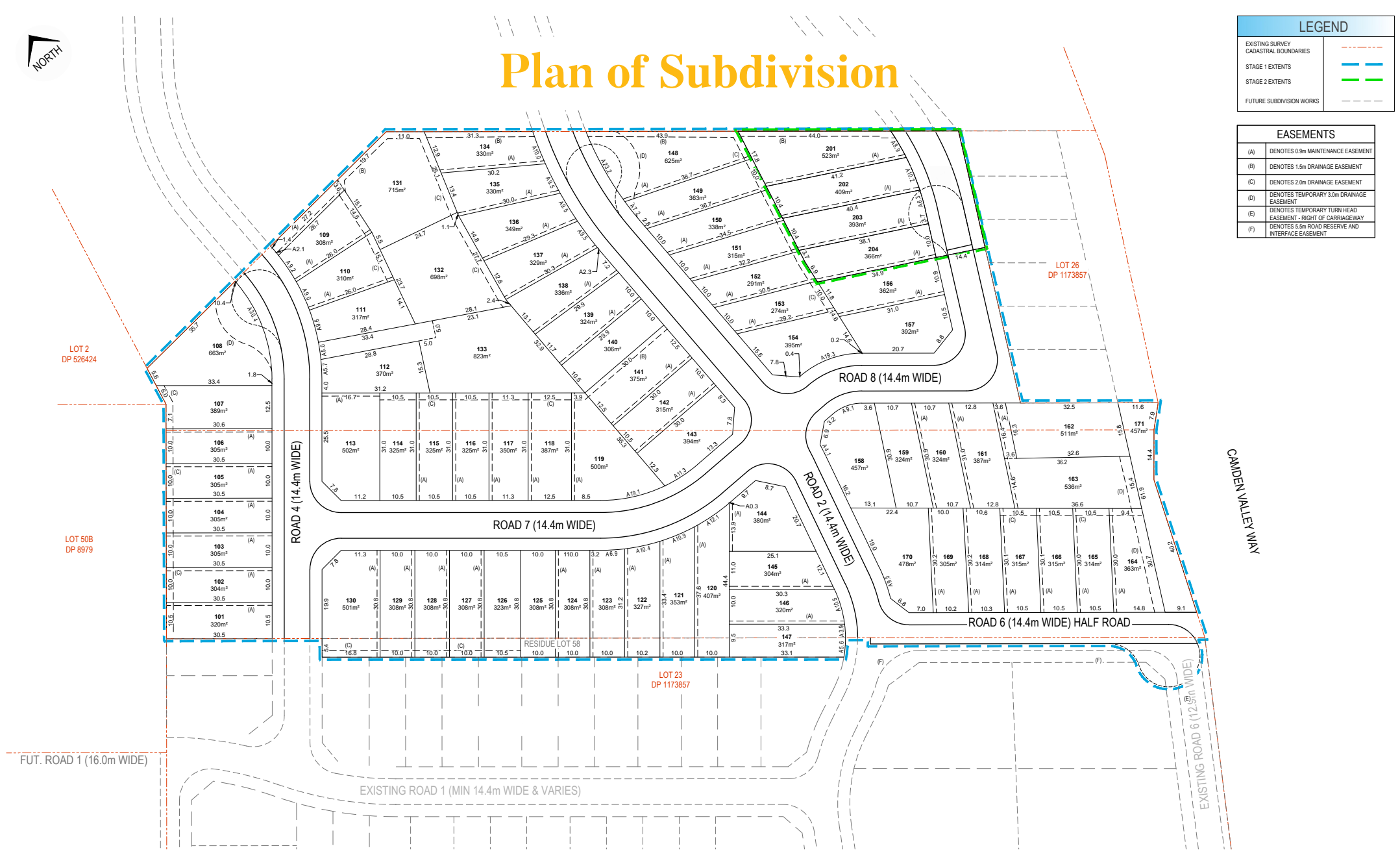
For: \_\_\_\_\_  
By: \_\_\_\_\_



# Plan of Subdivision

LEGEND	
EXISTING SURVEY CADASTRAL BOUNDARIES	- - - - -
STAGE 1 EXTENTS	— — — — —
STAGE 2 EXTENTS	— — — — —
FUTURE SUBDIVISION WORKS	- - - - -

EASEMENTS	
(A)	DENOTES 0.9m MAINTENANCE EASEMENT
(B)	DENOTES 1.5m DRAINAGE EASEMENT
(C)	DENOTES 2.0m DRAINAGE EASEMENT
(D)	DENOTES TEMPORARY 3.0m DRAINAGE EASEMENT
(E)	DENOTES TEMPORARY TURN HEAD EASEMENT - RIGHT OF CARRIAGEWAY
(F)	DENOTES 5.5m ROAD RESERVE AND INTERFACE EASEMENT



LOT 2  
DP 526424

LOT 26  
DP 1173857

LOT 50B  
DP 8979

LOT 23  
DP 1173857

FUT. ROAD 1 (16.0m WIDE)

EXISTING ROAD 1 (MIN 14.4m WIDE & VARIES)

ISSUED FOR **INFORMATION**

Revision	By	Date



For:

By:

CONCEPT PLAN OF  
SUBDIVISION

SCHEDULE of CURVED BOUNDARIES

No	BEARING	CHORD	ARC	RADIUS	No	BEARING	CHORD	ARC	RADIUS
1	(358°47'55")	(1.45)	(1.45)	(92.75)	23	(275°53'50")	11.185	11.215	42.755
2	(338°11'20")	(6.675)	(6.73)	(15)	28	(9°57'20")	23.15	23.21	92.75
3	(22°47'55")	(15.515)	(18.455)	(9.2)	29	(0°34'20")	7.175	7.175	92.75
4	(143°15'00")	(16.39)	(20.225)	(9.2)	30	(288°38'00")	18.87	19.27	27.21
5	(198°20'25")	30.19	30.855	42.84	33	(16°23'00")	2.4	2.4	92.75
6	(5°01'50")	9.19	9.2	57.24	34	(197°06'25")	(16.83)	(18.575)	(12.2)
7	(14°08'50")	9.015	9.015	57.24	35	(218°19'00")	(9.145)	(9.385)	(12)
8	(23°29'00")	9.625	9.635	57.24	36	(50°37'45")	(5.265)	(5.265)	(15)
9	(36°08'45")	5.65	5.65	57.24	37	(357°17'55")	(16.455)	(20.385)	(9.2)
10	(296°12'10")	18.93	19.085	42.755	38	(177°47'25")	(0.125)	(0.125)	(42.84)
11	(358°39'50")	3.525	3.525	57.24	39	(205°14'45")	(15.64)	(18.69)	(9.2)
12	(182°08'20")	9.5	10.715	10.715	44	(192°01'40")	(20.35)	(21.165)	(42.84)
13	(30°48'40")	5.005	5.005	57.24	40	(160°03'10")	(6.755)	(8.81)	(15)
14	(197°30'15")	9.995	9.995	107.15	41	(211°00'25")	(7.205)	(7.215)	(42.84)
15	(192°17'25")	9.495	9.495	107.15	42	(354°11'05")	(10.95)	(11.37)	(12)
16	(187°12'55")	9.49	9.495	107.15	43	(5°40'45")	(15.235)	(16.455)	(12.2)
17	(182°08'20")	9.5	10.715	10.715	44	(192°01'40")	(20.35)	(21.165)	(42.84)
18	(178°58'40")	2.325	2.325	107.15	45	(9°26'25")	(20.045)	(20.08)	(92.75)

# Draft Linen Plan

- (E1) EASEMENT TO DRAIN WATER 1.5 WIDE
- (E10) RIGHT OF ACCESS 5 WIDE
- (E2) EASEMENT TO DRAIN WATER 2 WIDE
- (E3) EASEMENT FOR RETAINING WALL SUPPORT 0.5 WIDE
- (E4) EASEMENT TO DRAIN WATER 3 WIDE
- (E5) EASEMENT FOR ON-SITE STORMWATER DETENTION (OVER WHOLE LOT)
- (E6) EASEMENT FOR SUPPORT, MAINTENANCE & REPAIR 0.9 WIDE
- (E7) RIGHT OF CARRIAGEWAY VAR. WIDTH
- (E9) EASEMENT FOR SERVICES 5 WIDE
- (E12) EASEMENT FOR STORMWATER QUALITY IMPROVEMENT DEVICE (WHOLE OF LOT)

(B) WASTE BIN COLLECTION POINT (APPROXIMATE POSITION ONLY)



SURVEYOR  
 Name: Peter Robert Warwick  
 Date: xxxxxxxx  
 Reference: 21582-C

PLAN OF SUBDIVISION OF  
 LOTS 24 & 25 D.P.1173857 &  
 LOT 55 D.P.1260747

L.G.A: CAMDEN  
 Locality: LEPPINGTON  
 Reduction Ratio: 1:500  
 Lengths are in metres

REGISTERED  
**DRAFT 18/05/20**

# Draft Linen Plan

SCHEDULE of CURVED BOUNDARIES

No	BEARING	CHORD	ARC	RADIUS
2	(223°37'05")	(5.615)	(5.62)	(32.8)
12	(94°40'20")	12.11	12.135	57.155
13	(106°12'00")	10.85	10.885	57.155
14	(116°52'55")	10.435	10.45	57.155
15	(125°33'30")	6.86	6.86	57.155
24	(88°27'20")	0.19	0.19	57.155
25	(193°25'10")	0.085	0.085	57.155
26	(202°41'00")	10.42	10.465	32.8
27	(220°10'35")	9.53	9.565	32.8
31	(108°36'40")	8.88	9.07	12.81
32	(19°07'20")	9.4	9.42	47.2



(B) WASTE BIN COLLECTION POINT (APPROXIMATE POSITION ONLY)  
 (BP) CONCRETE WASTE BIN PAD & COLLECTION POINT (APPROXIMATE POSITION ONLY)

(E2) EASEMENT TO DRAIN WATER 2 WIDE  
 (E3) EASEMENT FOR RETAINING WALL SUPPORT 0.5 WIDE  
 (E4) EASEMENT TO DRAIN WATER 3 WIDE  
 (E5) EASEMENT FOR ON-SITE STORMWATER DETENTION (OVER WHOLE LOT)  
 (E6) EASEMENT FOR SUPPORT, MAINTENANCE & REPAIR 0.9 WIDE  
 (E11) RIGHT OF ACCESS 3.5 WIDE  
 (E12) EASEMENT FOR STORMWATER QUALITY IMPROVEMENT DEVICE (OVER WHOLE LOT)

15	21	22	23	24	25	26	27	SURVEYOR Name: Peter Robert Warwick Date: xxxxxxxx Reference: 21582-C	PLAN OF SUBDIVISION OF LOTS 24 & 25 D.P.1173857 & LOT 55 D.P.1260747	L.C.A: CAMDEN Locality: LEPPINGTON Reduction Ratio: 1:500 Lengths are in metres	REGISTERED	DRAFT 18/05/20
16	D P 1 2 6 0 7 4 7											



**[www.theoutlookleppington.com.au](http://www.theoutlookleppington.com.au)**