



LOT 2321

LAND SIZE: 328.30 m²
HOUSE SIZE: 250.56 m²

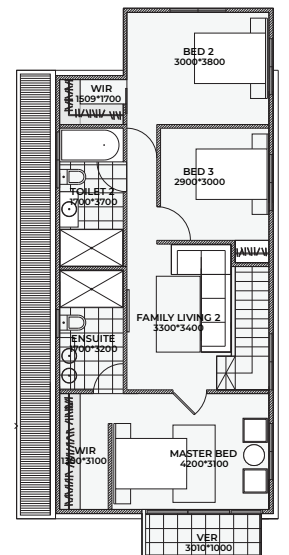
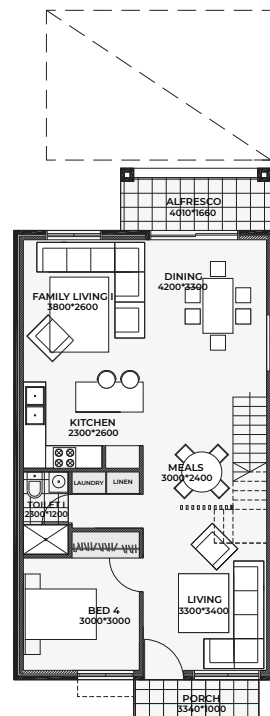
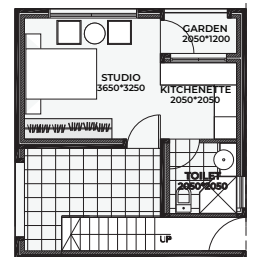
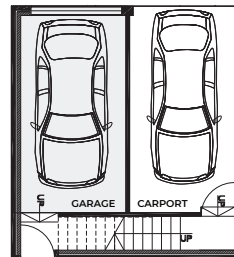
BARDIA
NEW BREEZE ESTATE

HOUSE PRICE \$455,000.00
LAND PRICE \$470,000.00
PACKAGE PRICE \$925,000.00

5 3 2

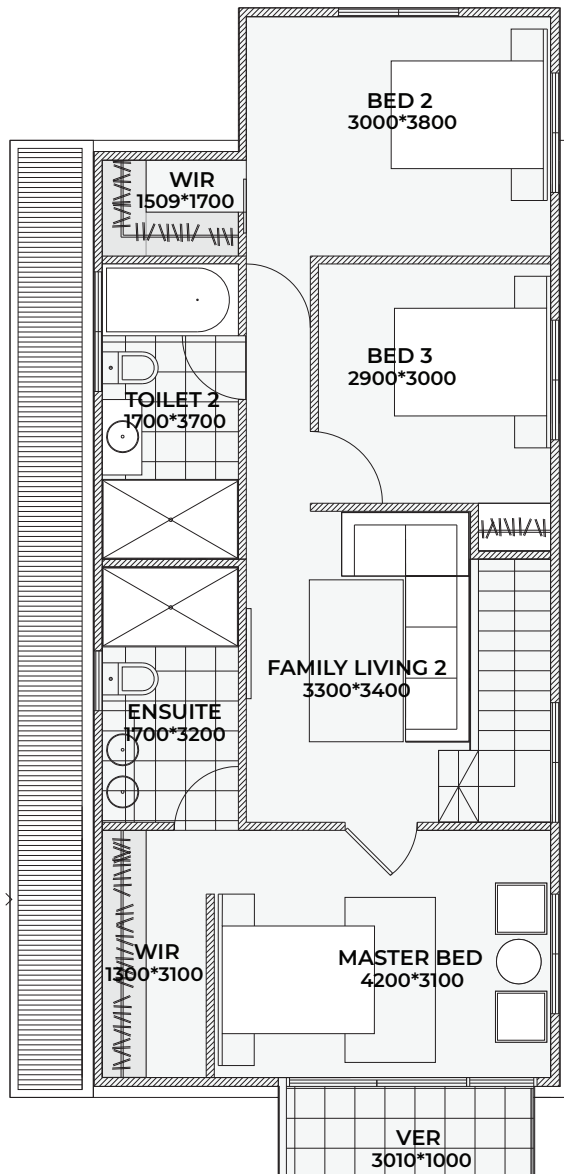
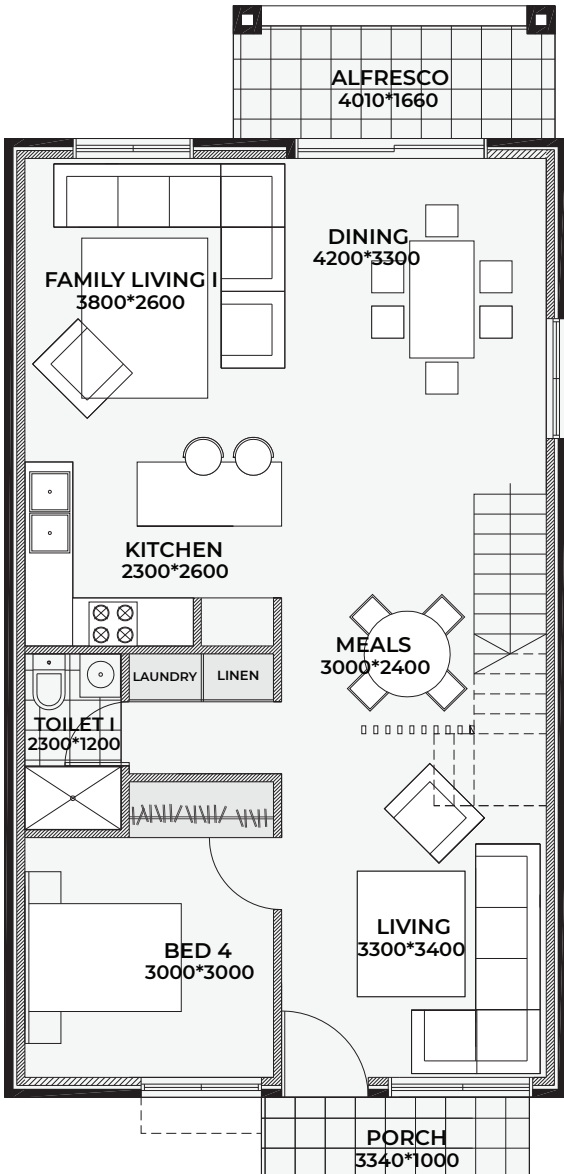
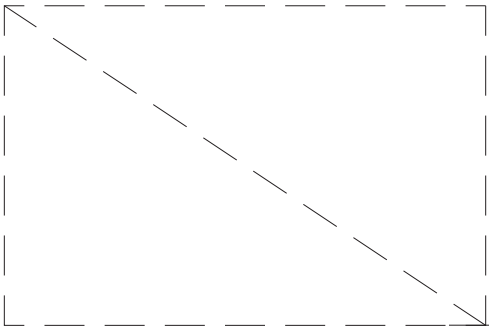
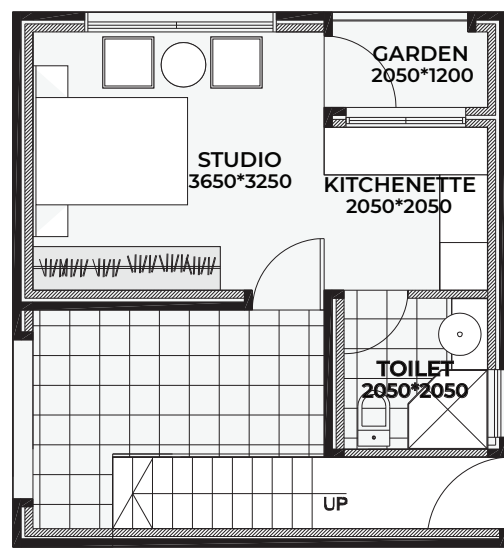
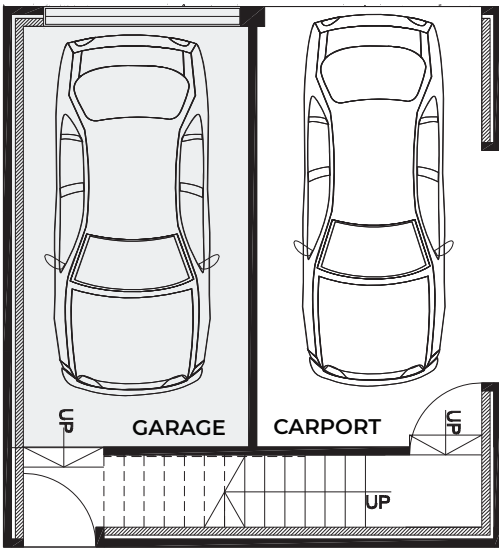
NEW HOME INCLUSIONS:

- ◆ Fixed price contract, fencing excluded
- ◆ 2.7 m ground floor ceiling height
- ◆ 2.5 m first floor ceiling height
- ◆ Premium brickwork and cladding
- ◆ Quality tiles in hallway, family and carpet in bedroom
- ◆ Monier roof tiles
- ◆ 40mm stone benchtop to kitchen with soft close drawers and doors
- ◆ Niches to bathroom and ensuite shower
- ◆ 900mm stainless steel cooktop, oven and range hood
- ◆ 2-Zone ducted air conditioning
- ◆ 40 LED downlights throughout the home
- ◆ Double powerpoints to each room
- ◆ Coloured concrete driveway



GROUND

FIRST



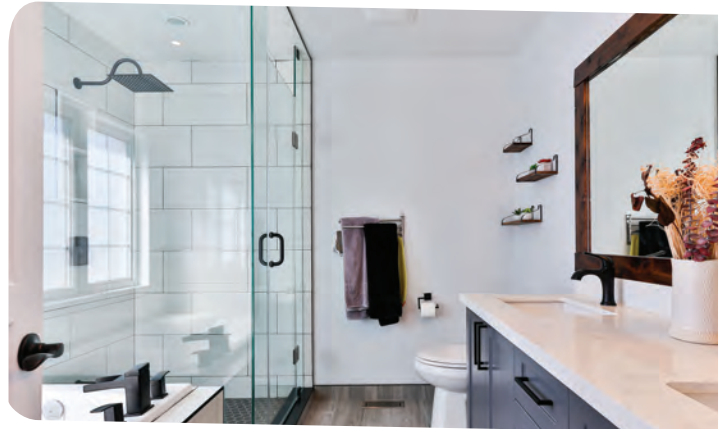
GROUND

FIRST

House Size	275Q
House Lot Width	10.8 m ²
Lot Length	30.4 m ²

INCLUSIONS

- Fixed site costs, no surprises
- 2700mm raised ground ceiling height
- 2-Zone ducted reverse Air Conditioner
- Dishwasher included
- Fencing excluded
- 40mm stone benchtop to kitchen
- Carpeted and tiled throughout
- Superior fittings and fixtures
- 40 LED downlights throughout
- Full tiling in wet areas to bathroom and ensuite
- Niches to bathroom and ensuite showers
- Tiled alfresco and patio
- Colour through concrete driveway
- Multi-coat paint system
- All homes include BASIX requirements
- Professionally selected external and internal colours and materials
- Stainless steel appliances with 1 year warranty
- Vanities to bathroom and ensuite on applicable plans
- Blinds included



DUCTED
AIRCONDITIONING



COMPLETE SETTLEMENT
PROCESS GUIDANCE



PROGRESS UPDATES



PROFESSIONAL COLOUR
SELECTION



BASIX RATED
ENERGY EFFICIENCY



THREE MONTH
DEFECT LIABILITY PERIOD



6 YEARS STRUCTURAL
WARRANTY



CUSTOMIZATION
AVAILABLE