



Bardia, NSW

\$ 735,000

* Rego Mid 2021

EP-HOUSE Inclusions

- ✓ 2500mm Ceiling Height For Ground Floor.
- ✓ 20mm Stone Kitchen Benchtop.
- ✓ 600mm Kleenmaid® Cooking Appliances .
- ✓ Glass Kitchen Splashback.
- ✓ Finger-pull Design Polyurethane Finish Kitchen Cabinets.
- ✓ Bulkhead Above Wall Cabinets.
- ✓ Blum® Soft-closing Kitchen System.
- ✓ LED Down Lights & Oyster Lights.
- ✓ Full Tiles To Ceiling Of All Bathrooms And Ensuites.
- ✓ Free Standing 1500mm Acrylic Bath.
- ✓ Roller Blinds To Windows And External Sliding Doors.
- ✓ Aluminium Sliding Robe Doors With Mirror Or Frosted Glass.
- ✓ Ducted Air Conditioning With 2 Zones.
- ✓ Colorbond® Panel Lift Garage Door With 2 Remote Controllers.
- ✓ Colorbond® Fence, Fascia And Gutter.
- ✓ Full Turnkey Package Including Concrete Driveway & Landscaping.

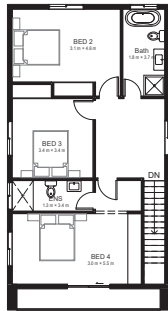
Land 270m² W9m * D30m \$365,000

Building Floor Area 185m² \$370,000

D-185D 4 3 2



Ground Floor	67.5
First Floor	72.1
Balcony	5.5
Alfresco	7.2
Porch	2.4
Garage	30.3
Total	185

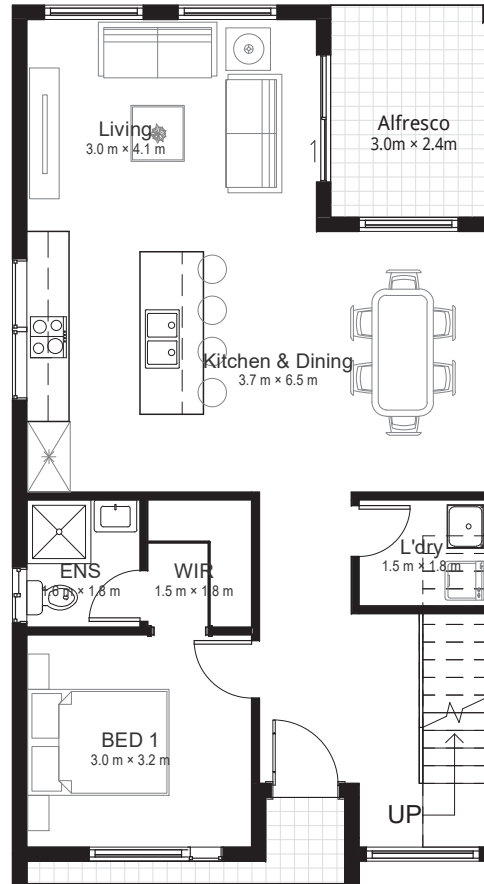


GROUND FLOOR PLAN

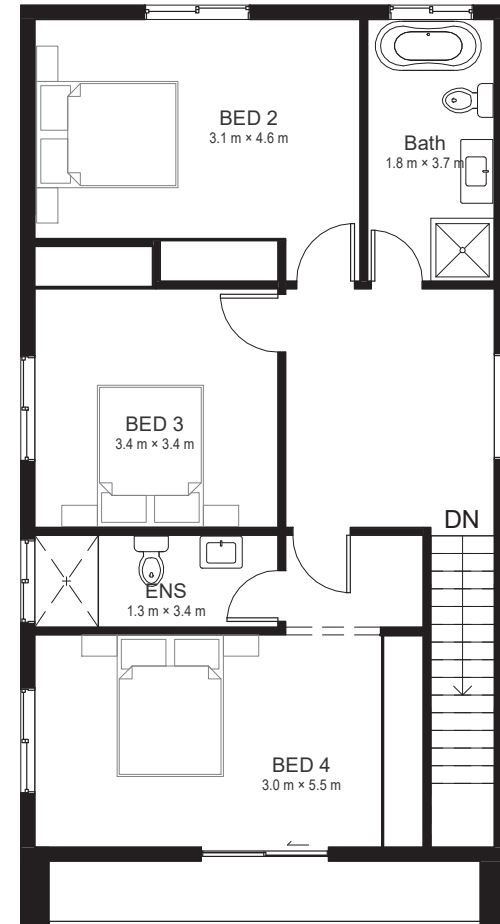


FIRST FLOOR PLAN

Lot 2317



Ground Floor Plan



First Floor Plan

Whilst reasonable effort has been made to ensure accuracy, pictures, photographs and floor plans are illustrative and there may be some variations between this depiction and the detailed plans. Pictures and photographs may include items not included in the E-PROPERTY Group Specifications. See your sales agent for detailed home and landscape plans and inclusions. *House and land package price is correct at time of printing though is subject to change without notice. Stamp duty on land, legal fees, titles and property reports are not included in price. Total square meters and square size measurements of this house are calculated by measuring from the internal side of external walls. Where no external walls exist, for the purpose of measuring building area (such as porches, balconies or outdoor rooms) E-PROPERTY Group assumed a straight line between the exterior wall so columns. If this is a National Rental Affordability Scheme approved property, see fahcnsa.gov.au for details. E-PROPERTY Group Pty Ltd (ADN613499336).