



Package Price:
\$727,100

Austral

Peach Tree Estate

Lot: 230, 224-226

Land Register: Dec 2020

4 3 2

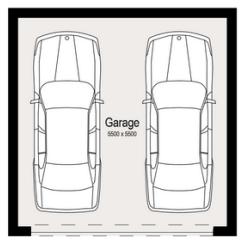
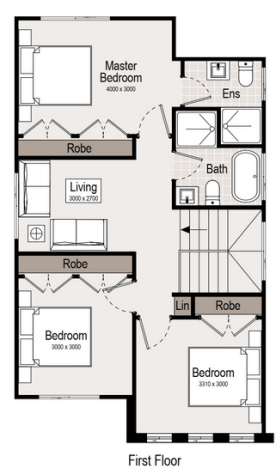
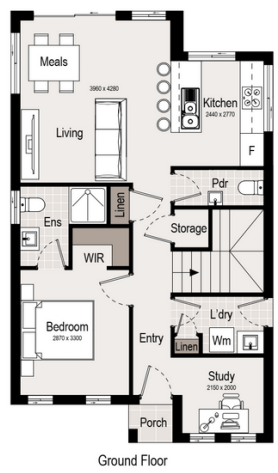
Land: 287m²

House: 176m²

Land Price: \$375,000

YOUR NEW HOME INCLUDES:

- Fixed price contract
- 2700mm ground floor ceiling height, 2500mm first floor ceiling
- Premium brickworks & cladding
- Quality tiles and carpet throughout
- Monier tiled roof
- 20mm stone benchtop to kitchen with soft close drawers & doors
- Niches to bathroom and ensuite shower
- 600mm stainless steel cooktop, oven and rangehood
- 2-Zone ducted air conditioning
- Full LED downlights throughout the home
- Double powerpoints to each room
- Mailbox, flyscreen and clothing line included
- Turnkey package: coloured concrete driveway and soft landscaping included



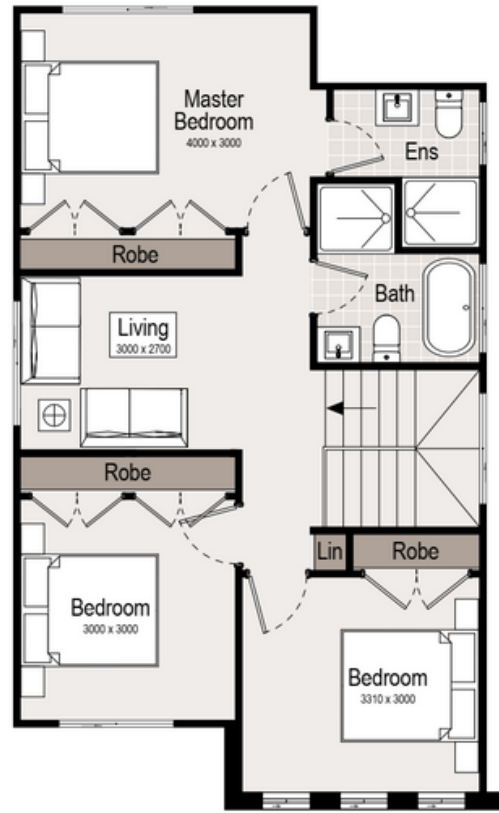
Free Upgrades for a limited time!

- **900mm appliances**
- **40mm stone benchtop to kitchen**
- **Full tiling to wet areas in bathroom**

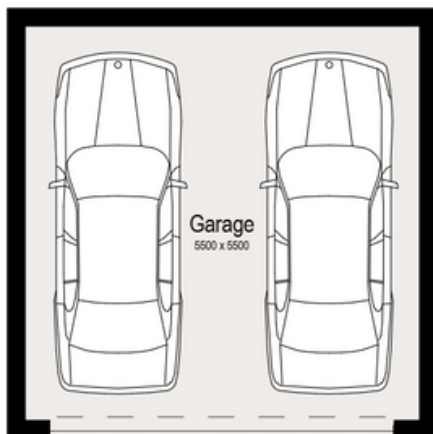
*Whilst reasonable effort has been made to ensure accuracy, photographs and artist's impressions of surrounding area and the interiors and exteriors are intended as a guide only and subject to change. Styling is indicative only and not provided. Price is correct at time of printing though is subject to change without notice. Total square meters and square size measurement of this house is calculated by measuring from the external side and external walls. Prospective purchasers should make their own enquiries.



Ground Floor



First Floor



Blue Jay 19

SOHO Series

Disclaimer:
 The plan and design are owned by Golden Nest and under the copyright act of 1968 cannot be reproduced without authorisation. Doing so will be liable for action under the act.
 Please note that this material was produced prior to construction and is intended as an indication of the items to be included and/or the general layout of the property and is merely indicative and should not be construed as constituting an offer, guarantee or contract.
 All furniture illustrated is indicative only and is not included in the sale.

HOUSE AREAS	
4 3.5 2	
GROUND FLOOR	71.24 m ²
FIRST FLOOR	67.77 m ²
GARAGE	35.76 m ²
PORCH	1.16 m ²
Total	175.94 m²
TOTAL WIDTH	6.880 m
TOTAL DEPTH	11.340 m



DIVINE HOMES
an elegant choice

PREMIUM INCLUSIONS

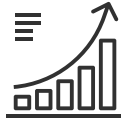
- ✓ Fixed site costs, no surprises
- ✓ 2700mm raised ground ceiling height
- ✓ 2-Zone Ducted Reverse Air conditioner
- ✓ Generously turfed and landscaped
- ✓ 20mm manufactured stone benchtop to kitchen
- ✓ Laminated and carpeted throughout
- ✓ Superior fittings and fixtures
- ✓ LED Downlights throughout
- ✓ Full tiling to wet areas
- ✓ Floating vanities to bathroom and ensuite on applicable plans
- ✓ Niches to bathroom and ensuite showers
- ✓ Flyscreens provided to all windows & quality blinds throughout
- ✓ Tiled alfresco and patio
- ✓ Colour through concrete driveway
- ✓ Clothesline & letterbox
- ✓ Multi-coat paint system
- ✓ All homes include BASIX requirements
- ✓ Professionally selected external and internal colours and materials
- ✓ Quality stainless steel appliances with 2 year warranty



Ducted Airconditioning



Complete Settlement
Process Guidance



Progress Updates



Professional Colour
Selection



5-Star Inclusions



BASIX Rated
Energy Efficiency



Six Month Defect
Liability Period



7 Year Structural
Warranty



Customization
Available



Turn-key Fixed
Packages

