

LOT 1002

# Albert Park

B O X H I L L

\$763,000

4 3 1

HOUSE & LAND  
PACKAGE



Artists impression only. Landscaping is indicative only. Subject to change.

Grange 17 - Classic

## FEATURES

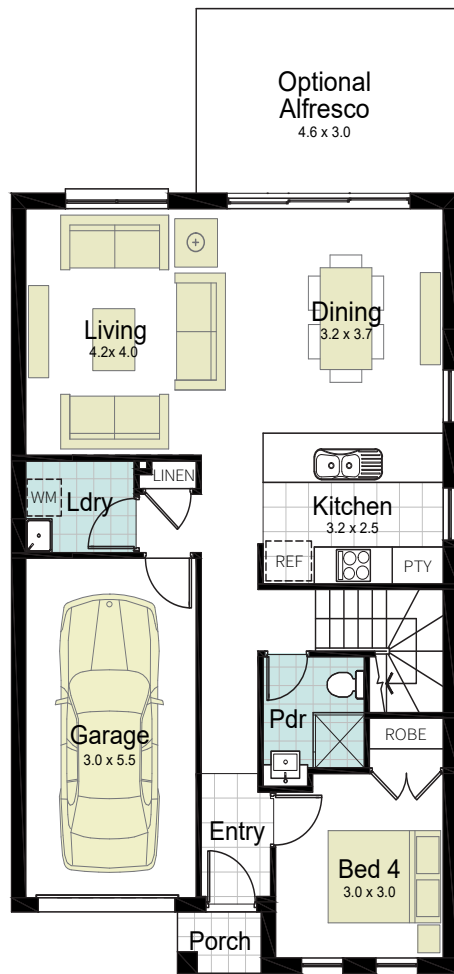
- Fixed site costs
- 2600mm ceilings to ground floor
- 20mm stone benchtops to kitchen and vanities
- Westinghouse stainless steel appliances incl. gas cooktop, underbench oven, externally ducted rangehood and freestanding dishwasher
- Semi-frameless shower screens, wall hung vanities and freestanding bath
- Carpet floor coverings to bedrooms
- Tiled floor coverings throughout
- ActronAir ducted air conditioning
- LED lighting package included
- Flyscreens to opening windows
- Automatic garage door with remotes
- Includes driveway, turf, letterbox and clothesline

# LOT 1002

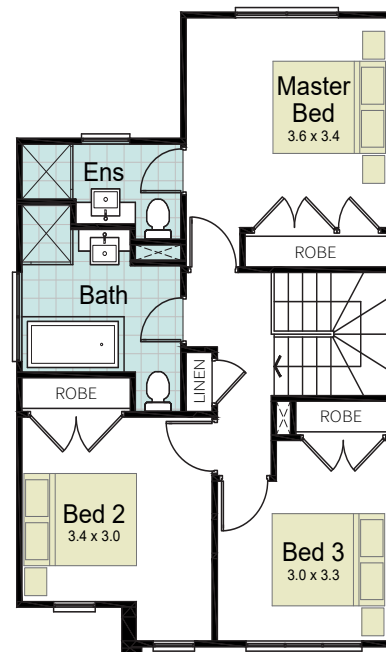
4 3 1

LAND SIZE 312m<sup>2</sup>

GROUND FLOOR	76.45m <sup>2</sup>
FIRST FLOOR	61.20m <sup>2</sup>
GARAGE	18.75m <sup>2</sup>
PORCH	1.48m <sup>2</sup>
<b>GROSS FLOOR AREA</b>	<b>157.88m<sup>2</sup></b>



GROUND FLOOR



FIRST FLOOR

[albertparkboxhill.com.au](http://albertparkboxhill.com.au)

© \*All drawings and photography are for illustrative purposes and should be used as a guide only. Goldmate Group and their builder partners reserve the right to withdraw packages, revise plans, specifications and pricing without notice or obligation. Copyright of plans and documentation procured by Goldmate Group and their builder partners shall remain the exclusive property of the producing or procuring entity unless a license is issued otherwise. This house and land package is inclusive of GST. Goldmate Group and their builder partners have made all reasonable efforts to ensure the accuracy of this package flyer. It is recommended that the purchaser make their own enquiries in relation to this product offering and review their tender documentation with due care. Information and pricing are correct as at 8th May 2020. Changes can be accommodated to the package as requested by the purchaser subject to permissibility, however any changes as directed by the purchaser will be at their own cost. Star Homes ABN 35 602 963 502. Builder's Licence 290700C. Goldmate Group Pty Ltd. ABN 22 169 892 111.