



Package Price:
\$699,700

Austral

Land Register: Dec 2020

Peach Tree Estate

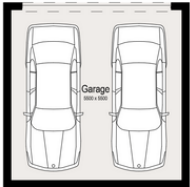
Lot: 225

4 2 2

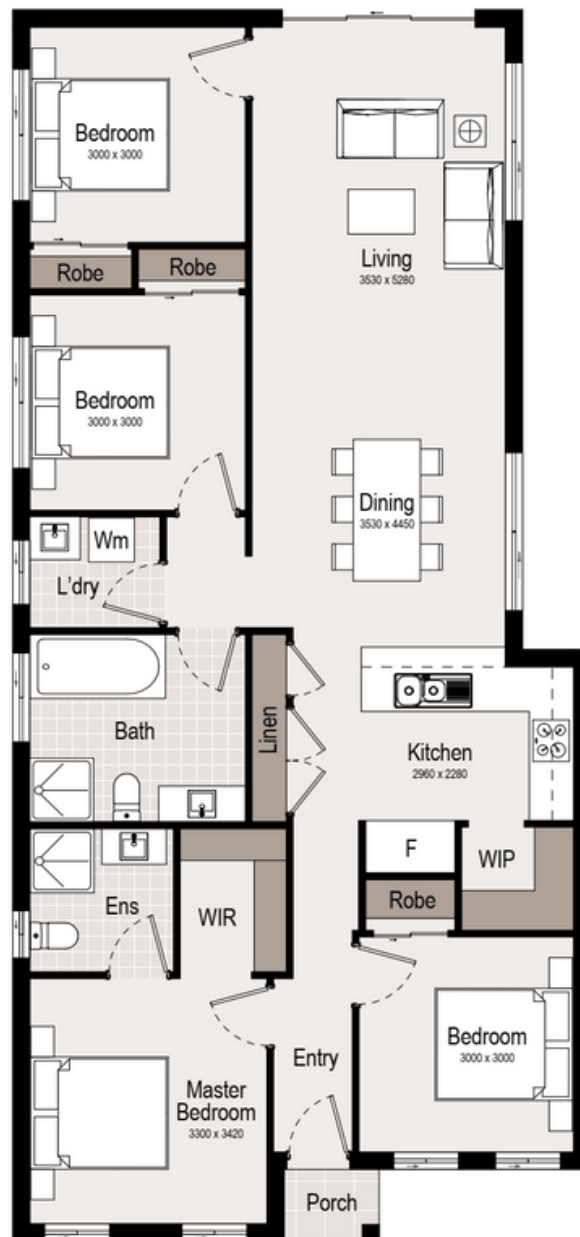
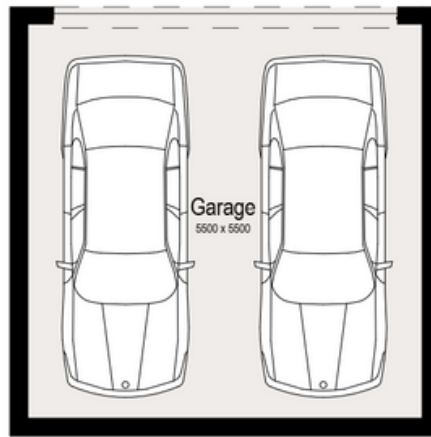
Land: 287m² House: 162m² Build Price: \$324,700 Land Price: \$375,000

Hashtag Portal 5 star inclusions

- Fixed price contract
- 2700mm ground floor ceiling height, 2500mm first floor ceiling
- Premium brickworks & cladding
- Quality tiles and carpet throughout
- Monier tiled roof
- 40mm stone benchtop to kitchen with soft close drawers & doors
- Niches to bathroom and ensuite shower
- 900mm stainless steel cooktop, oven and rangehood
- Dishwasher
- 2-Zone ducted air conditioning
- Full LED downlights throughout the home Double powerpoints to each room
- Floor to ceiling tiles in bathroom
- Turnkey package: coloured concrete driveway and soft landscaping included
- No fencing
- Mailbox, flyscreen and clothing line included



*Whilst reasonable effort has been made to ensure accuracy, photographs and artist's impressions of surrounding area and the interiors and exteriors are intended as a guide only and subject to change. Styling is indicative only and not provided. Price is correct at time of printing though is subject to change without notice. Total square meters and square size measurement of this house is calculated by measuring from the external side and external walls. Prospective purchasers should make their own enquiries.



GOLDEN NEST

Peacock 17 SOHO Series

Disclaimer:
The plan and design are owned by Golden Nest and under the copyright act of 1968 cannot be reproduced without authorisation. Doing so will be liable for action under the act.
Please note that this material was produced prior to construction and is intended as an indication of the items to be included and/or the general layout of the property and is merely indicative and should not be construed as constituting an offer, guarantee or contract.
All furniture illustrated is indicative only and is not included in the sale.

4 2 2

HOUSE AREAS

GROUND FLOOR	135.26 m ²
GARAGE	35.70 m ²
PORCH	1.32 m ²
Total	162.38 m²
TOTAL WIDTH	8.050 m
TOTAL DEPTH	17.155 m



DIVINE HOMES
an elegant choice

PREMIUM INCLUSIONS

- ✓ Fixed site costs, no surprises
- ✓ 2700mm raised ground ceiling height
- ✓ 2-Zone Ducted Reverse Air conditioner
- ✓ Generously turfed and landscaped
- ✓ 40mm manufactured stone benchtop to kitchen
- ✓ Laminated and capreted throughout
- ✓ Superior fittings and fixtures
- ✓ LED Downlights throughout
- ✓ Full tiling to wet areas
- ✓ Floating vanities to bathroom and ensuite on applicable plans
- ✓ Niches to bathroom and ensuite showers
- ✓ Flyscreens provided to all windows & quality blinds throughout
- ✓ Tiled alfresco and patio
- ✓ Colour through concrete driveway
- ✓ Clothesline & letterbox
- ✓ Multi-coat paint system
- ✓ All homes include BASIX requirements
- ✓ Professionally selected external and internal colours and materials
- ✓ Quality stainless steel appliances with 5 year warranty



Ducted Airconditioning



Complete Settlement
Process Guidance



Progress Updates



Professional Colour
Selection



5-Star Inclusions



BASIX Rated
Energy Efficiency



Six Month Defect
Liability Period



7 Year Structural
Warranty



Customization
Available



Turn-key Fixed
Pacakges

