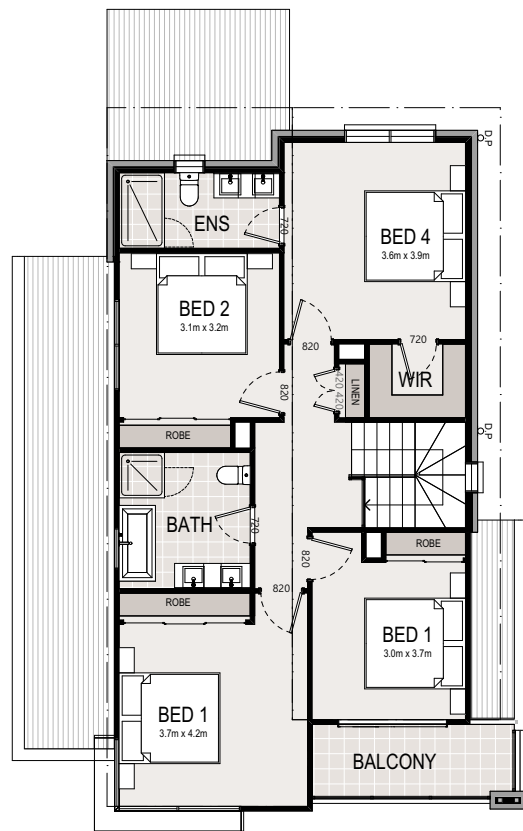
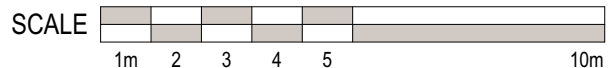


GROUND FLOOR PLAN



FIRST FLOOR PLAN



Disclaimer: Whilst every effort is made to provide accurate information, this floor plan and facade is for illustrative purposes and intended to provide a visual guide only. This floor plan and facade could be subject to site conditions, statutory authority requirements & further approvals and with this Creation Homes reserves its rights to modify designs if required.



NUEVO

© The plan & design of this house is owned by Creation Homes & under the copyright act of 1968 cannot be reproduced in any shape or form without prior written authorisation. Any doing so will be liable for action under the act.

4 2 2	
Ground Floor Living	77.20m ²
First Floor Living	89.42m ²
Garage	33.67m ²
Alfresco	10.65m ²
Porch	6.75m ²
Balcony	6.57m ²
Total	224.26m²
Total Width	10.200m
Main Dwelling Depth	12.500m
Total Depth	15.860m