



LOT 228

LAND SIZE: 287.00 m²

HOUSE SIZE: 166.10 m²

HOUSE PRICE \$315,000.00

LAND PRICE \$375,000.00

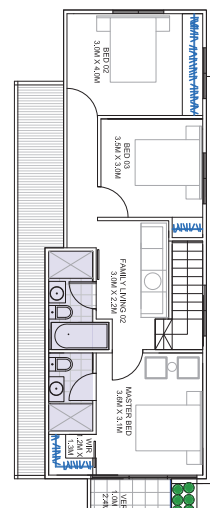
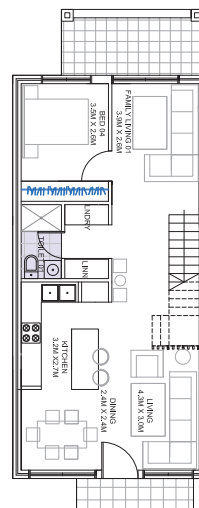
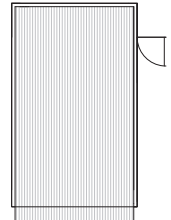
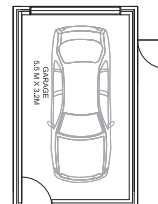
PACKAGE PRICE \$690,000.00

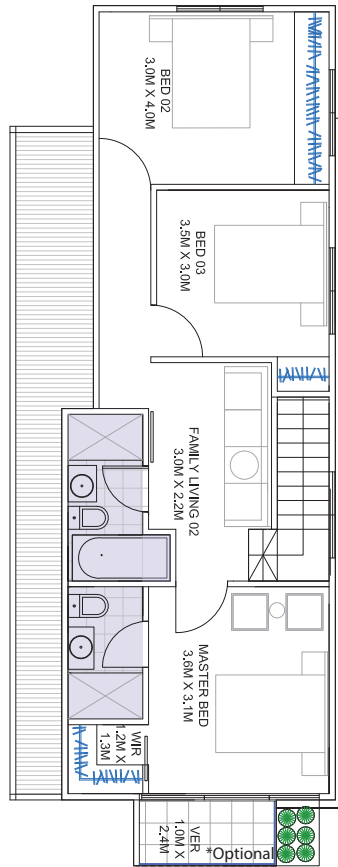
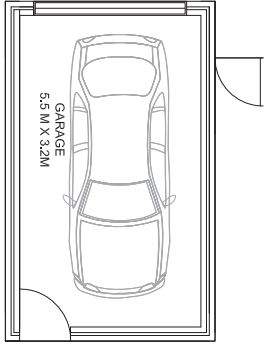
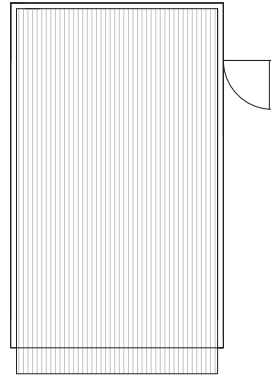
AUSTRAL
PEACH TREE ESTATE

4 3 1

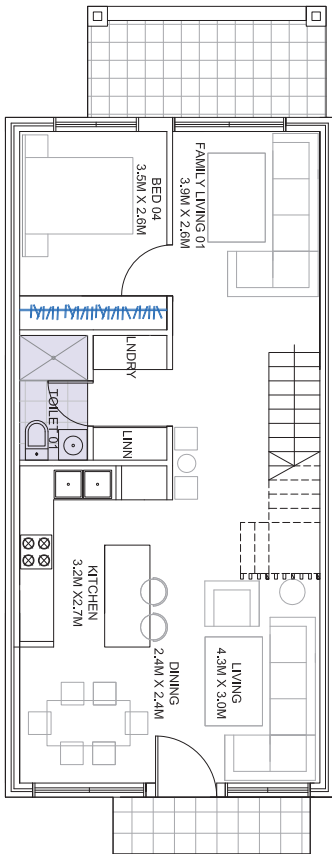
HASHTAG PORTAL 5 STAR INCLUSIONS:

- ◆ Fixed price contract, fencing excluded
- ◆ 2.7 m ground floor ceiling height
- ◆ 2.5 m first floor ceiling height
- ◆ Premium brickwork and cladding
- ◆ Quality tiles in hallway, family and carpet in bedroom
- ◆ Monier roof tiles
- ◆ 40mm stone benchtop to kitchen with soft close drawers and doors
- ◆ Niches to bathroom and ensuite shower
- ◆ 900mm stainless steel cooktop, oven and range hood
- ◆ 2-Zone ducted air conditioning
- ◆ 40 LED downlights throughout the home
- ◆ Double powerpoints to each room
- ◆ Coloured concrete driveway





TOP



BOTTOM

*Optional balcony will cost \$10,000.



The plan and design are owned by Hashtag Portal and supporting entities and under the copyright act of 1968 cannot be reproduced without authorization. Doing so will be liable for action under the act. Please note that the material was provided prior to the construction and is intended as an indication of the items to be included and/or the general layout of the property and is merely indicative and should not be constructed as constituting an offer, guarantee or contract.

HOUSE AREAS

| | |
|--------------|----------------------------|
| Ground Floor | 101.3 m ² |
| First Floor | 64.8 m ² |
| TOTAL | 161.1 m² |
| Total Width | 9 m ² |
| Total Length | 31.8 m ² |

INCLUSIONS

- Fixed site costs, no surprises
- 2700mm raised ground ceiling height
- 2-Zone ducted reverse Air Conditioner
- Dishwasher included
- Fencing excluded
- 40mm stone benchtop to kitchen
- Carpeted and tiled throughout
- Superior fittings and fixtures
- 40 LED downlights throughout
- Full tiling in wet areas to bathroom and ensuite
- Niches to bathroom and ensuite showers
- Tiled alfresco and patio
- Colour through concrete driveway
- Multi-coat paint system
- All homes include BASIX requirements
- Professionally selected external and internal colours and materials
- Stainless steel appliances with 1 year warranty
- Vanities to bathroom and ensuite on applicable plans
- Blinds included



DUCTED
AIRCONDITIONING



COMPLETE SETTLEMENT
PROCESS GUIDANCE



PROGRESS UPDATES



PROFESSIONAL COLOUR
SELECTION



5-STAR INCLUSIONS



BASIX RATED
ENERGY EFFICIENCY



THREE MONTH
DEFECT LIABILITY PERIOD



6 YEARS STRUCTURAL
WARRANTY



CUSTOMIZATION
AVAILABLE



NO TURN-KEY
FIXED PACKAGES



P: 1300 00 PAIG
E: admin@paig.com.au
100 Harris Street, Pyrmont NSW 2009
www.hashtagportal.com.au