






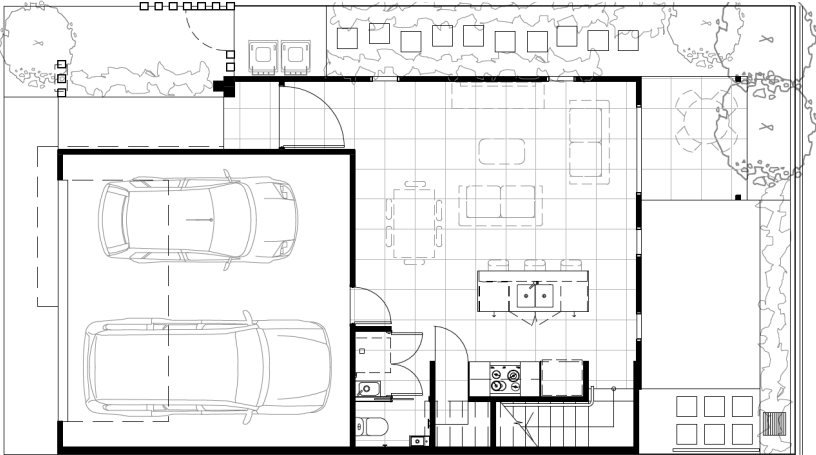
**THE GAWTHERN**  
Terraces

 3 Beds | 
  2 Baths | 
  2 Parkings

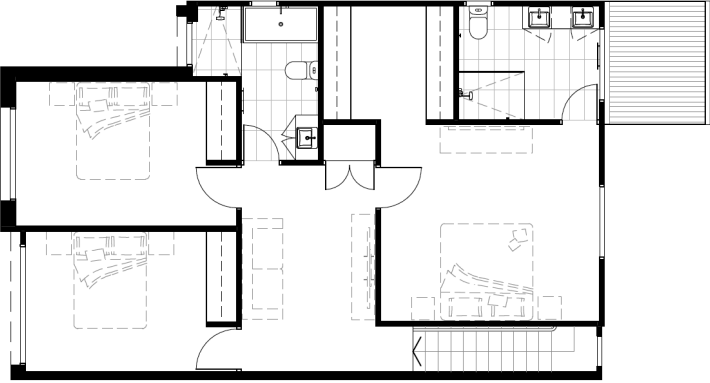
**Unit No:** 3  
**Location stage:** Stage 3  
**Body Corp:** \$37 per week

**Key Features**

- 110 m<sup>2</sup> pool available for resident only
- BBQ area and 400sqm playground for resident only
- Security camera in entrance and common area
- 2.55m Ceiling ground floor
- 600mmx600mm large tile
- Designer range tapware
- Marble finish kitchen splash back
- Walk-in pantry
- Square set corner finish on ground floor
- Gas cooktop
- Gas instantaneous hot water system
- Fly screen to all windows
- Celling fan to all rooms and livings



**Internal:** 160m<sup>2</sup>  
**Patio & portico:** 7 m<sup>2</sup>  
**Extra Backyard:** 34 m<sup>2</sup>  
**Total External:** 94m<sup>2</sup>



**Building By:**



Disclaimer: The render and floor plan depicted may not represent the correct townhouse orientation and may be mirrored. Number, size and position of windows will also vary between townhouse. Please refer to contract plans for correct information. Please note, unless contracts have been issued or deposit received, price and availability are subject to change without notice.