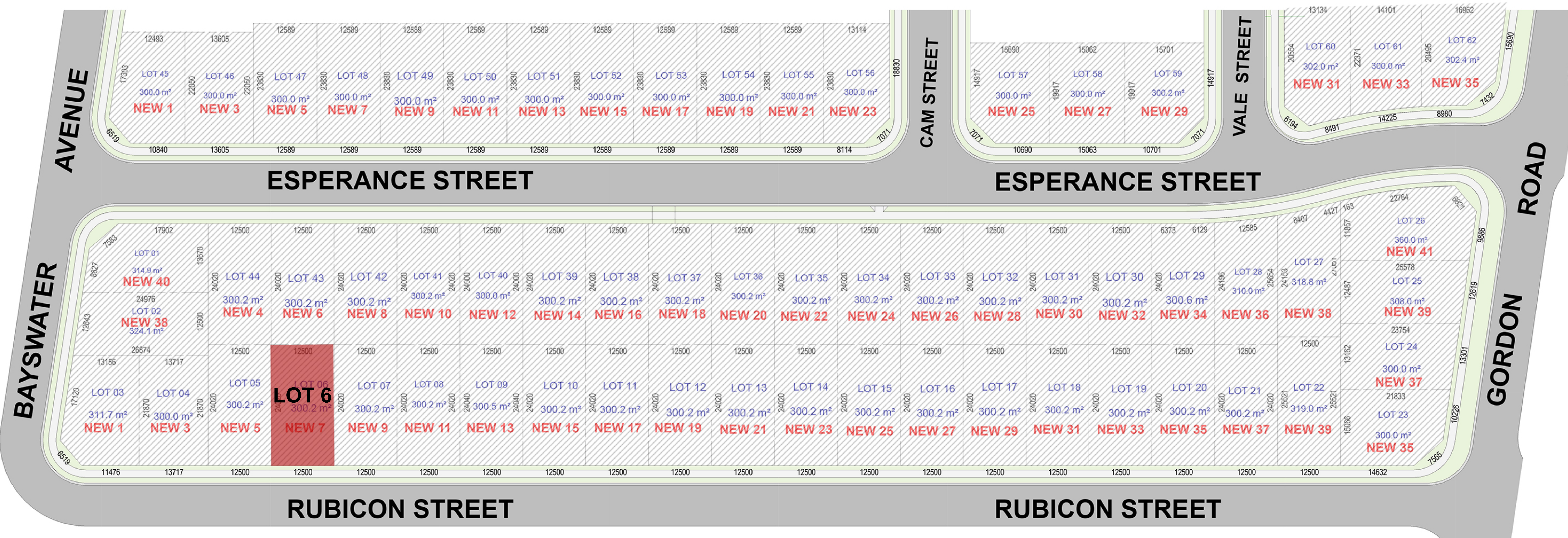


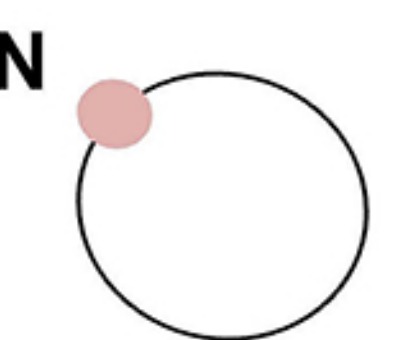
# SITE PLAN

45,51 & 57 GORDON RD.  
SCHOFIELDS

SITE PLAN  
STAGE 1



Area quoted to be used as guide only. This plan is for illustration purposes only. All information contained is gathered from sources deemed to be reliable. We have no doubt it is accurate however we cannot guarantee it. Areas are subject to final survey. Layout may change due to final council approval. The marketing plan and strata plan area will vary because of the different methods of calculation adopted. The marketing plan area is based on the floor areas while the strata plan area is based on Strata Schemes (Freehold Development) Act 1973. Note: Store(S), Robe(R), Linen(L), Bath fixtures, Laundry fixtures & Kitchen joinery fixtures, form part of sales package. TV and other items such as credenza, sofa, study desk, TV units & beds are not included as part of sale. Windows and doors sizes are indicative and subject to change based on legislative approval.



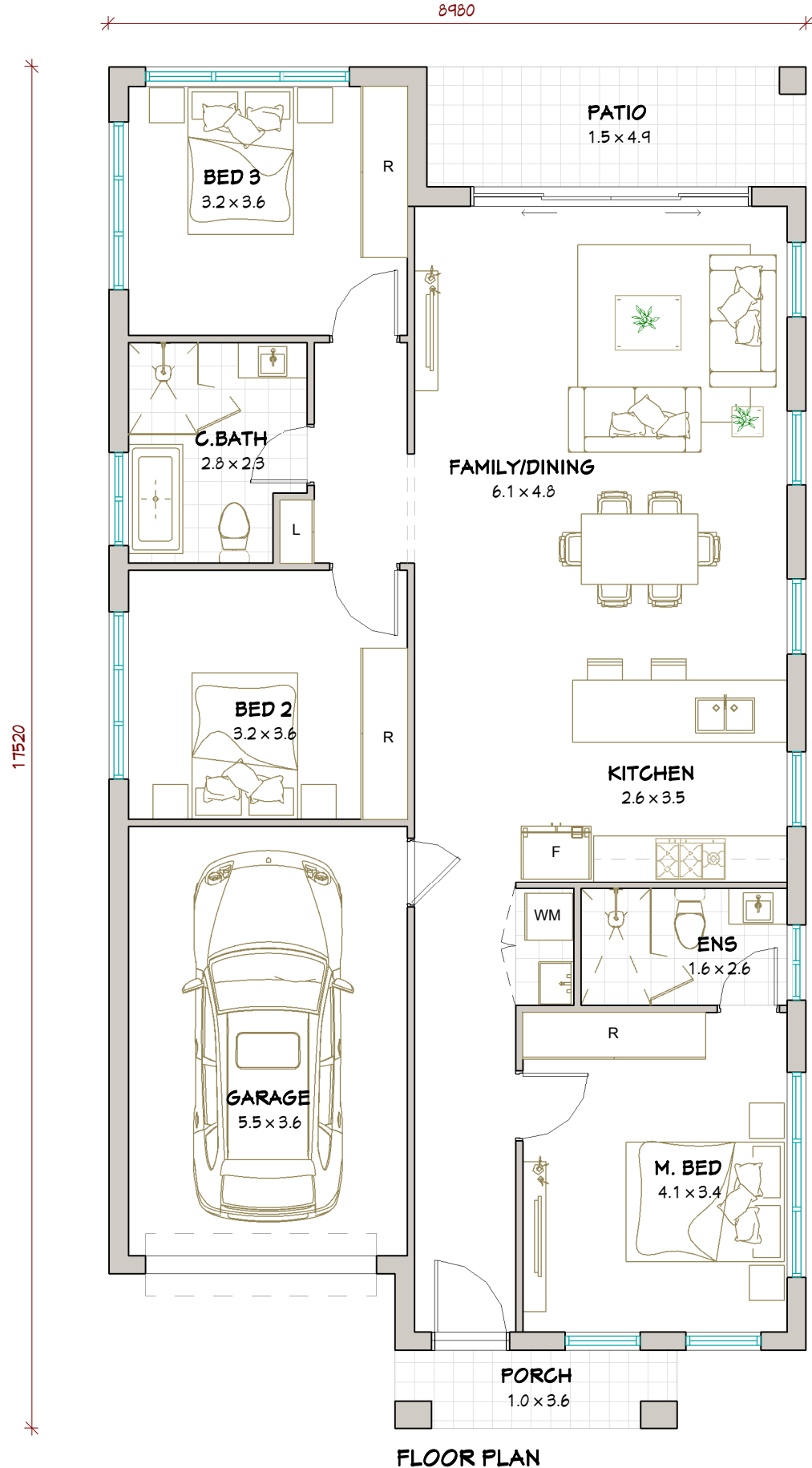


THE BATHLA GROUP HAS A SURPRISING ABUNDANCE OF SPACE FOR YOU TO SUIT TODAY'S SYLISH AND COMPACT LOTS.

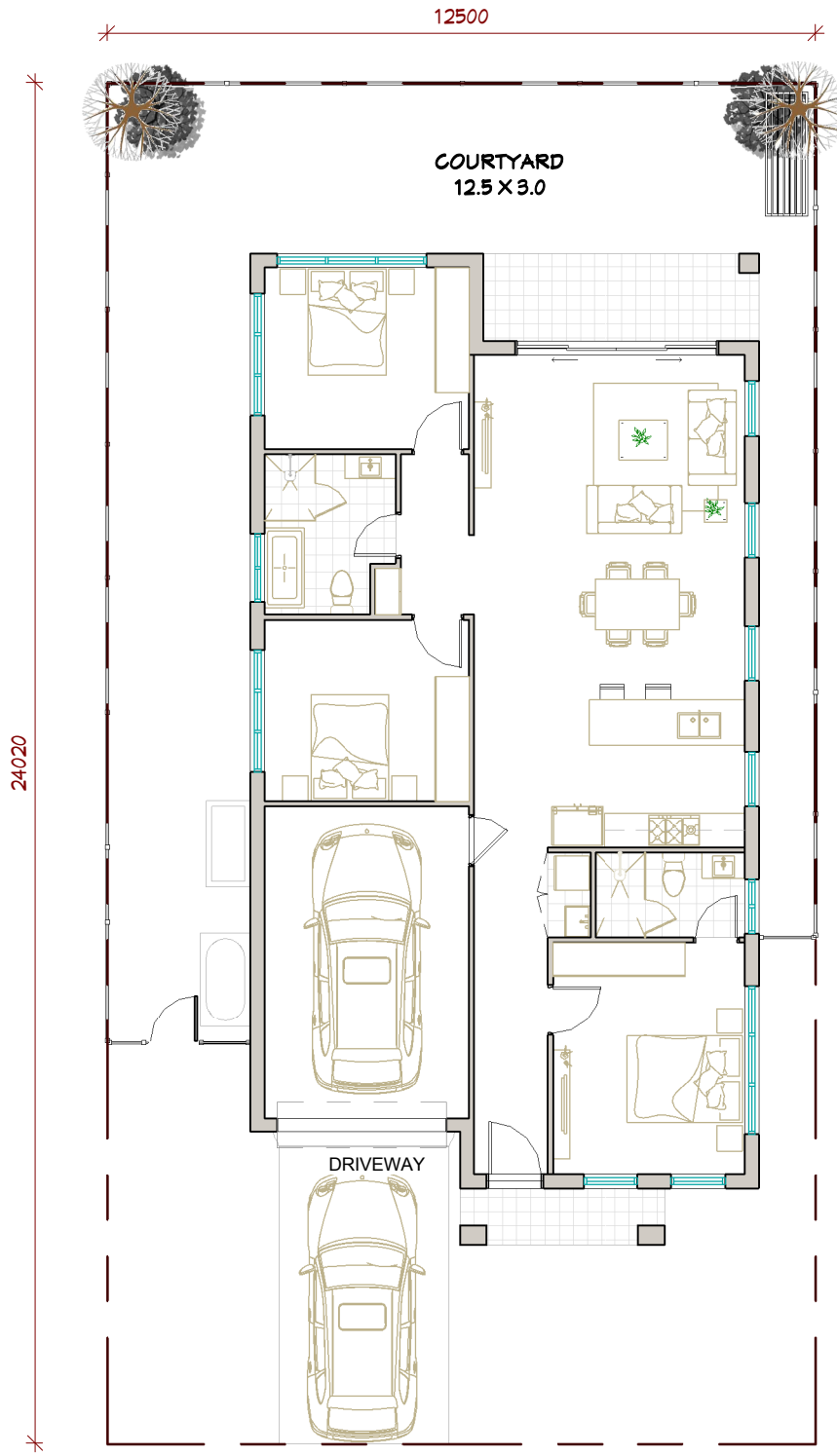
**CONCEPTUAL ELEVATION**

**LOT 6  
7 RUBICON STREET  
SCHOFIELDS**

DISCLAIMER: THE ELEVATION SHOWN ON THIS DOCUMENT IS AN ARTIST'S IMPRESSION AND IS INDICATIVE ONLY FOR THE PURPOSE OF CONSULTATION. IMAGES MAY DEPICT FEATURES NOT PROVIDED BY THE SELLER INCLUDING LANDSCAPING, WINDOW FURNISHING AND FINISHES, CLADDING, DECORATIVE LIGHTING, DECOR AND FURNITURE.



**FLOOR PLAN**



**LOT PLAN**

**DISCLAIMER:-**  
 THIS DOCUMENT IS ONLY FOR ILLUSTRATIVE PURPOSE. ALL THE DIMENSIONS ARE APPROXIMATE AND IS SUBJECT TO CHANGE AS PER SITE CONDITIONS. ALSO IT DOES NOT CONSTITUTE PART OF ANY LEGAL DOCUMENTS. FURNITURE AND OTHER ELEMENTS SHOWN ARE ONLY FOR PRESENTATION PURPOSES. DRIVEWAY IS SUBJECT TO CHANGE AS PER ONSITE SERVICES AND LEVELS. STEPS MAY BE ADDED IF ANY LEVEL ISSUES ON SITE. AREAS ARE INDICATIVE AND APPROXIMATE.

**LOT 06**  
**7 RUBICON STREET**  
**SCHOFIELDS**

**3**   **2**   **1**   **1**

**SINGLE STOREY SINGLE GARAGE**

**TOTAL LAND AREA - 300 m<sup>2</sup> (12.5MT X 24.0 MT)**

<b>Ground Floor</b> (Incl. Garage, Porch & Patio)	<b>148</b> m <sup>2</sup>
<b>Open space</b> (Incl. Back & Front Courtyard)	<b>152</b> m <sup>2</sup>

**16.0** Squares