

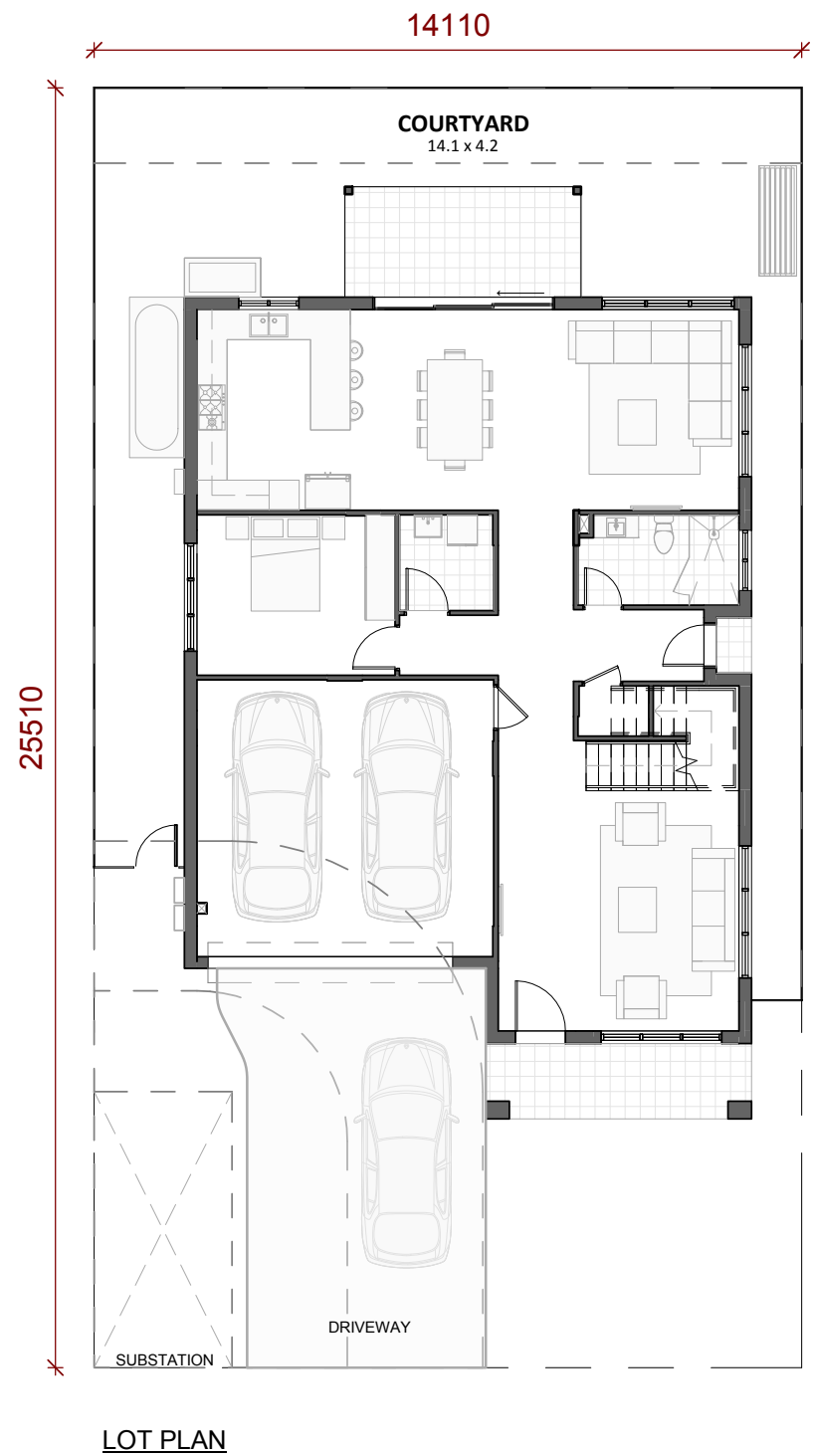
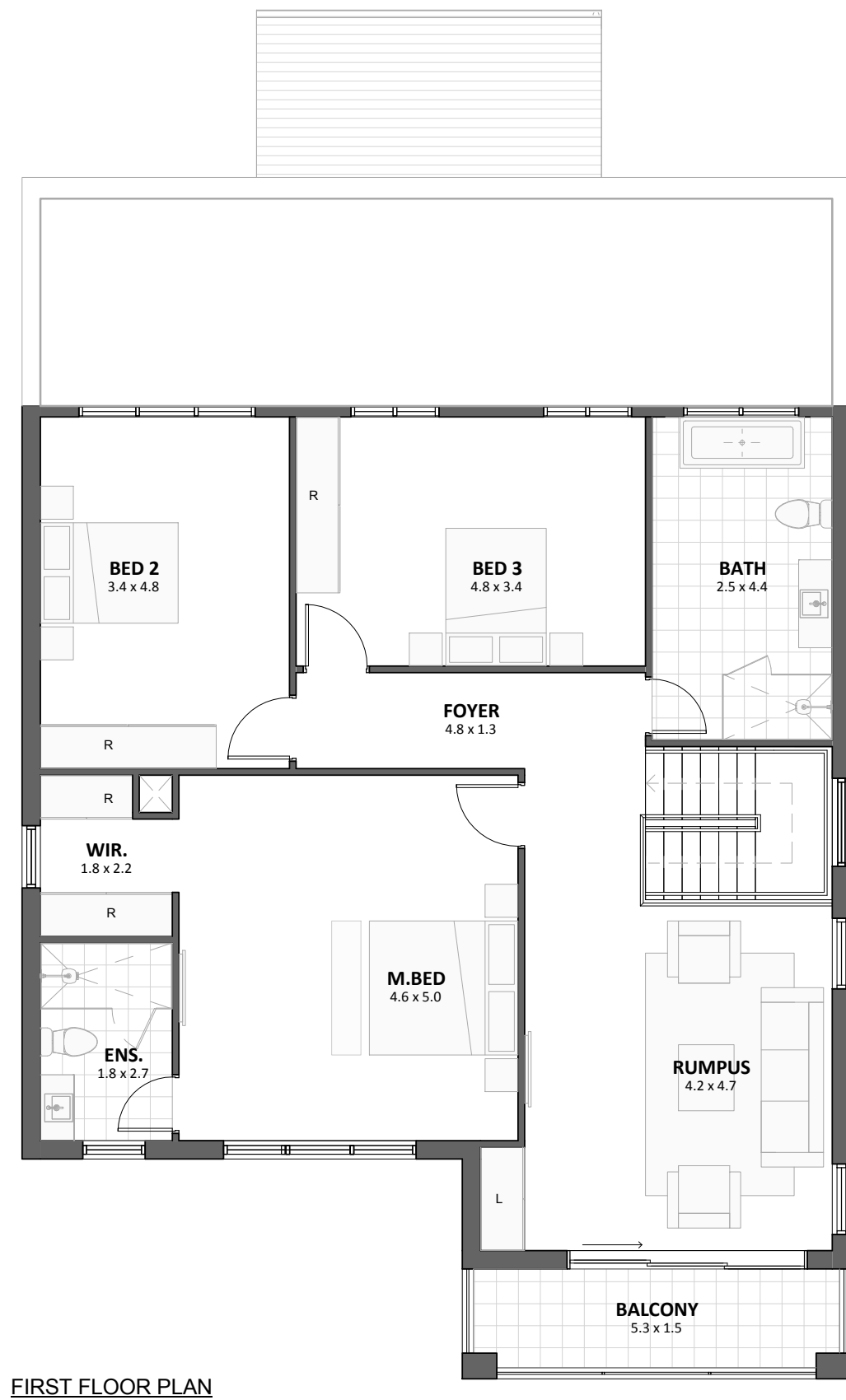


THE BATHLA GROUP HAS A SURPRISING ABUNDANCE OF SPACE FOR YOU TO SUIT TODAY'S SYLISH AND COMPACT LOTS.

CONCEPTUAL ELEVATION

LOT 27  
110 FOXALL ROAD.  
NORTH KELLYVILLE

\*DISCLAIMER:- THE INFORMATION SHOWN ON THIS DOCUMENT IS AN ARTIST IMPRESSION AND IS INDICATIVE ONLY FOR THE PURPOSE OF CONSULTATION.



**LOT 27**  
**110 FOXALL ROAD**  
**NORTH KELLYVILLE**

**DOUBLE STOREY DOUBLE GARAGE**

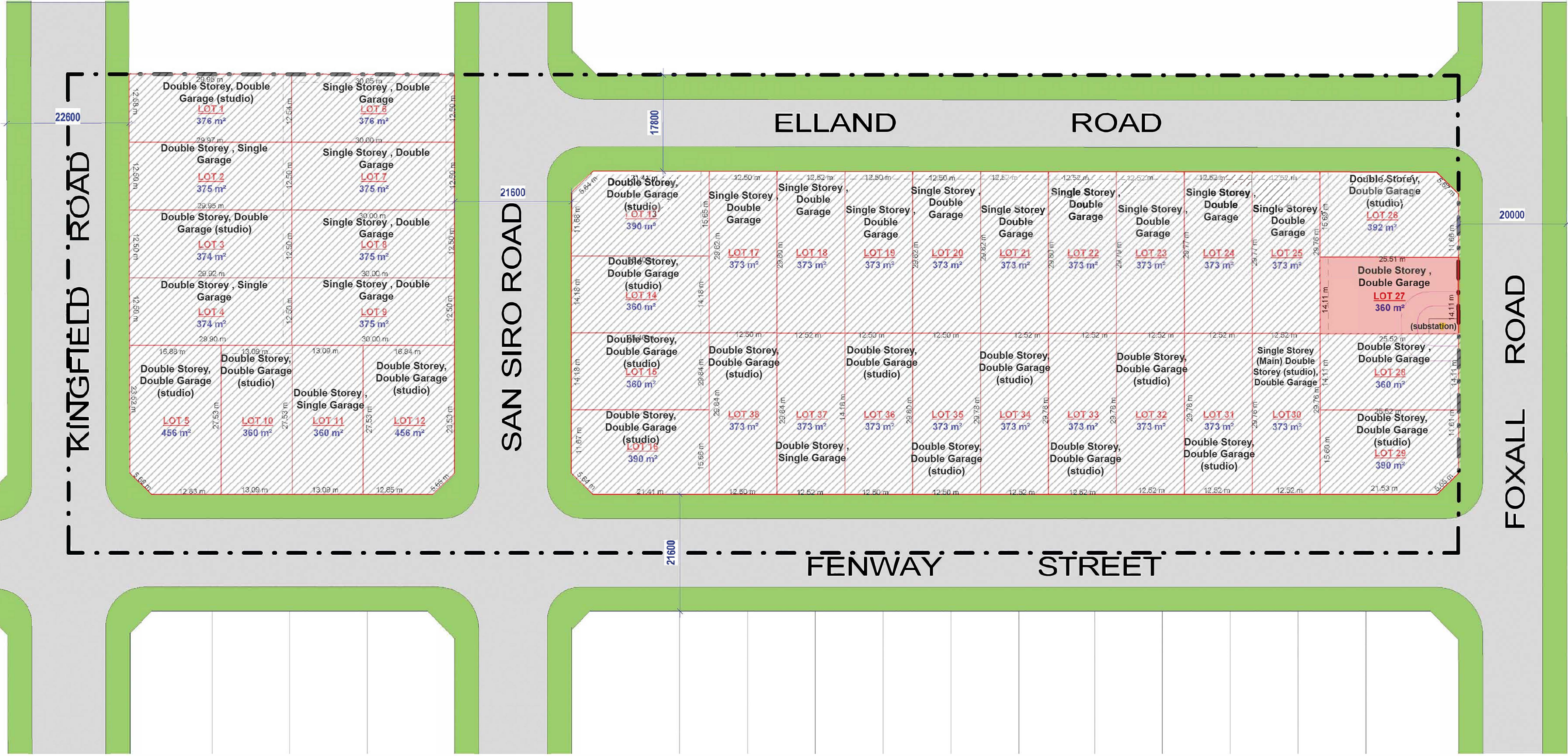
<b>TOTAL LAND AREA - 360 m<sup>2</sup> ( 14.1 MT X 25.5 MT )</b>			
<i>Ground Floor</i> ( Incl. Garage, Porch & Patio )	<b>178</b> m <sup>2</sup>	<b>19.2</b> Squares	
<i>First Floor</i> (Incl. Balcony)	<b>132</b> m <sup>2</sup>	<b>14.2</b> Squares	
<i>Open space</i> (Incl. Back & Front Courtyard)	<b>182</b> m <sup>2</sup>		
<b>TOTAL AREAS:-</b> (GROUND FLOOR + FIRST FLOOR AREA) (SQUARES AND m <sup>2</sup> )	<b>310</b> m <sup>2</sup>	<b>33.4</b> Squares	

Area quoted to be used as guide only. This plan is for illustration purposes only. All information contained is gathered from sources deemed to be reliable. We have no doubt it is accurate however we cannot guarantee it. Areas are subject to final survey. Layout may change due to final council approval. The marketing plan and strata plan area will vary because of the different methods of calculation adopted. The marketing plan area is based on the floor areas while the strata plan area is based on Strata Schemes (Freehold Development) Act 1973. Note: Store(S), Robe(R), Linen(L), Bath fixtures, Laundry fixtures & Kitchen joinery fixtures, form part of sales package. TV and other items such as credenza, sofa, study desk, TV units & beds are not included as part of sale. Windows and doors sizes are indicative and subject to change based on legislative approval. 9/5/2019 2:14:44 PM



# SITE PLAN

22, FOXALL ROAD,  
KELLYVILLE



DA APPROVED LOTS



Area quoted to be used as guide only. This plan is for illustration purposes only. All information contained is gathered from sources deemed to be reliable. We have no doubt it is accurate however we cannot guarantee it. Areas are subject to final survey. Layout may change due to final council approval. The marketing plan and strata plan area will vary because of the different methods of calculation adopted. The marketing plan area is based on the floor areas while the strata plan area is based on Strata Schemes (Freehold Development) Act 1973. Note: Store(S), Robe(R), Linen(L), Bath fixtures, Laundry fixtures & Kitchen joinery fixtures, form part of sales package. TV and other items such as credenza, sofa, study desk, TV units & beds are not included as part of sale. Windows and doors sizes are indicative and subject to change based on legislative approval.

