



CAMILLA PARK ESTATE

AT AUSTRAL

EXCLUSIVE HOUSE & LAND PACKAGE RELEASE

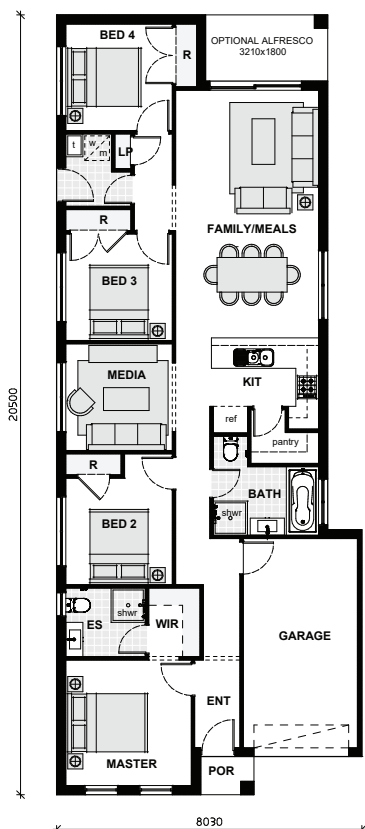
Lot 33 Cocherelle Street | \$670,500



BLOCK SIZE | 300 m²

4 2 1

Illustrative purposes only



FEATURE INCLUSIONS

- ✓ **Upstyle Promotion** included for FREE
- ✓ **FREE** Ducted Actron Air Conditioning
- ✓ 20mm Caesarstone 'Standard Range' (20mm Pencil Edge) to kitchen bench tops and vanities
- ✓ 900mm Westinghouse Cooktop and oven
- ✓ Dishwasher + 15 LED downlights
- ✓ Tiles and Carpet Package (refer to Tender)
- ✓ Tiled optional alfresco included
- ✓ 2590mm ceiling height downstairs
- ✓ T2 Termite Resistant timber frame with 25 Year Guarantee
- ✓ Insulation to walls and ceilings, sarking under roof
- ✓ 'Coloured On' Concrete Driveway
- ✓ Standard Basix and Site Costs included
- ✓ Expected Land Registration April 2021
- ✓ Land Price \$395,000 | House Price \$275,500



Brolen Homes

KIRKHAM 16 - AREAS

SUITS 9 x 28M LOT

floor areas	(sqm)
ground	124.4
garage	18.2
porch	1.4
optional alfresco	5.6
total	149.6

ground floor	(mm)
garage	3000x5500
master	3300x3300
bed 2	2800x2800
bed 3	2800x2800
bed 4	2800x2800
kitchen	2800x2500
family/meals	3760x6500
media	2800x2800
optional alfresco	3210x1750



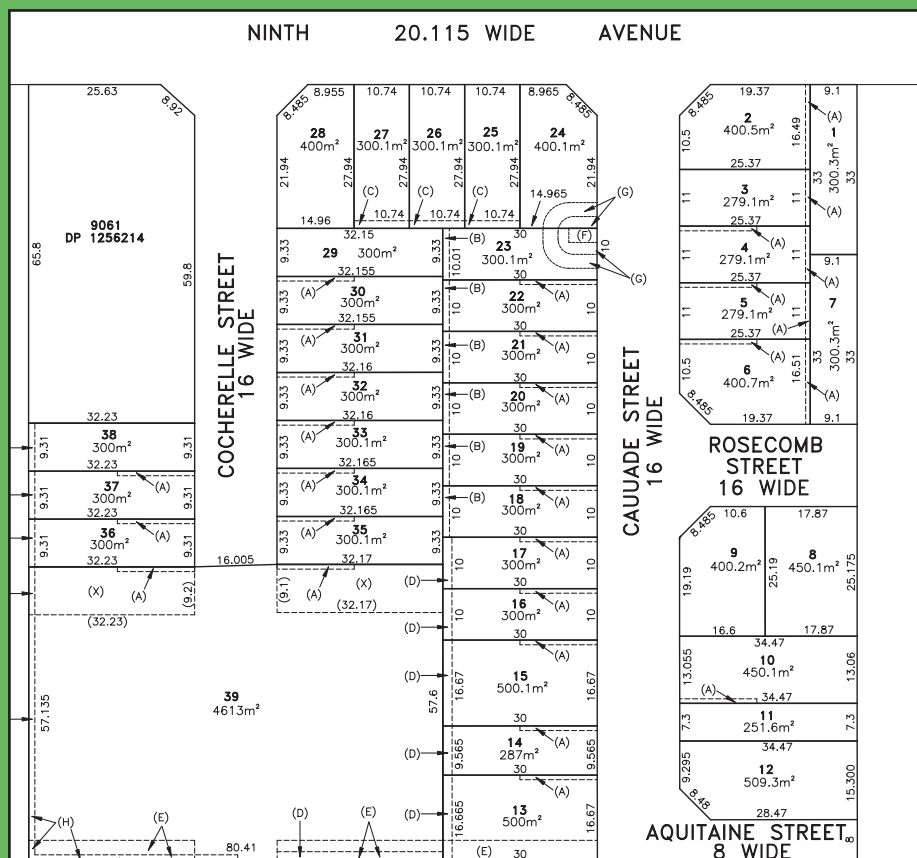
The PERFECT location & place to call home. A boutique development located in the popular suburb of Austral.

- Walk to Austral Bowling Club, shops and public transport.
- 5 minutes to Leppington Station

Located at
90 - 100 Ninth Avenue, Austral



**CAMILLA
PARK ESTATE**
AT AUSTRAL



Brolen Homes