

A modern kitchen and dining area featuring a high ceiling with three large skylights. The kitchen has white cabinetry, a wooden countertop, and a marble-patterned island. A dining table with black chairs and a bowl of lemons is set in the foreground. Large windows provide a view of the outdoors.

# Evoked Homes

by Vogue

INCLUSIONS

# CONTENTS

- 3 External Finishes
- 4 Internal Finishes
- 5 Kitchen
- 6 Bathroom, Ensuites, Powder Rooms, WC's
- 7 Laundry
- 8 Light Fixtures
- 9 Flooring
- 10 Everything Else
- 11 Landscape

VOGUE HOMES

25+

YEARS BUILDING  
AUSTRALIA

100+

HOMES  
A YEAR



**WINNER 2019**  
HIA NSW Region  
Bathroom in a  
Display Home



**FINALIST 2019**  
HIA NSW Region  
Medium Kitchen  
10 sqm to 20 sqm



**FINALIST 2019**  
HIA NSW Region  
Kitchen in a  
Display Home

**FREE  
UPGRADES**

- ✓ Ducted Air
- ✓ Appliances
- ✓ Lavish



## Our Display Home Locations

**Homeworld Emerald Hills  
(Leppington)**  
25 & 27 Coral Circuit,  
Emerald Hills, Leppington  
(Homeworld)

**Edmondson Park/Village  
Square Display Homes**  
20 & 22 Clement Road,  
Village Square,  
Edmondson Park 2174

**Oran Park Display  
Home**  
40 Webber Loop,  
Oran Park 2570

02 9607 9554  
www.vogue-homes.com.au  
sales@vogue-homes.com.au

# External Finishes

## Front Door

- ✓ 820mm front entry door from our wide Urban Corinthian Range, as per design

## Upgraded Brickwork Range

- ✓ Austral Bricks Face Finish (to be selected from the Austral Bricks Everyday Life and Wilderness Range)

## Roof

- ✓ Concrete Tiled roof from our wide Elabana & Atura range

## Termite System

- ✓ Reticulated termite protection system (Australian Standard AS3660114)

## Quality Workmanship

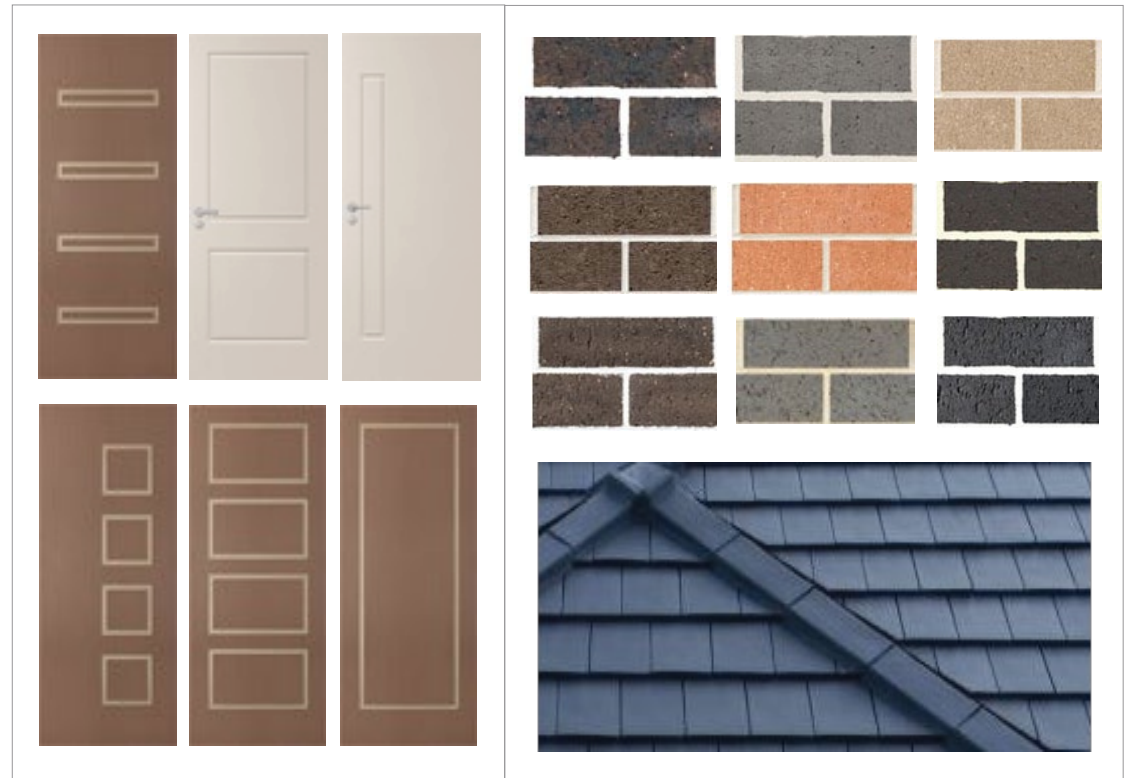
- ✓ 90mm treated framework
- ✓ 450mm wide eaves to perimeter of house, as per plan
- ✓ Colorbond Facia & Gutter

## Garage

- ✓ Colorbond 2040 high garage door from the panelift range
- ✓ Two (2) remote garage door controls with one (1) wall mounted control
- ✓ Auto garage door provision including single powerpoint

## Accessoires

- ✓ Powder coated aluminium windows and sliding doors with keyed alike locks
- ✓ 2 x external taps: 1 x rainwater tank and 1 potable connection
- ✓ Rheem 26L Instantaneous Hot Water System mounted in a recess box including electrical connection
- ✓ Roller Blinds to all operable windows (excluding wet areas)
- ✓ Flyscreens to all operable windows (excluding wet areas)
- ✓ Aluminium mesh screen doors to sliding doors
- ✓ 3000L Colorbond Rainwater tank and pump including electrical connection (as per BASIX)



# Internal Finishes

## Ceiling Heights

- ✓ 2600mm ceiling height to ground level and 2440mm to first floor

## Skirting & Cornices

- ✓ 70mm x 19mm splayed pine architraves and skirting throughout
- ✓ Gyprock lining to internal walls with 90mm cove cornice

## Doors

- ✓ Internal 2040mm high from our Corinthian painted flush panel doors
- ✓ Metal door stops to all doors
- ✓ Hinged doors to robes, linens, pantry and broom cupboards (as per design) from our Corinthian painted flush panel doors
- ✓ Lane lever door furniture from our wide Buckingham, Cambridge, Murano and Tovetto ranges

## Shelving

- ✓ 4 melamine shelves to linen cupboards
- ✓ 1 melamine shelf to broom cupboards
- ✓ 1 melamine shelf to robes and a hanging rail

## Paint System

- ✓ Taubmans Endure Paint system (one colour to walls throughout)

## Insulation

- ✓ Batts to roof space over living areas under roof tiles, excluding garage
- ✓ R1.5 thermal insulation batts to external cavity walls of living areas, excluding external garage wall
- ✓ R2.5 thermal insulation to ceiling, excluding garage

## Stairs

- ✓ Painted Pine Stringers, Posts and Handrails with Wrought Iron or Stainless Steel Balusters as per design

## Accessories

- ✓ 1 x free to air TV point
- ✓ 1 x paid TV point
- ✓ 1 x internal Gas Point
- ✓ 1 x data point
- ✓ 1 x NBN provision (located in garage)
- ✓ Smoke detectors will be installed as per Australian standards
- ✓ External TV Antenna



# Kitchen

## Cabinetry

- ✓ Laminate Kitchen cupboards from our standard range
- ✓ Laminate Kitchen one full set of drawers from our standard range
- ✓ 4 Melamine shelves to pantry / walkin pantry (as per design)

## Benchtops

- ✓ 20mm stone benchtop from our builder's range

## Sink & Tapware

- ✓ Everhard Stainless steel 1 ¾ end bowl Kitchen Sink
- ✓ Alder chrome Kitchen mixer tap from our wide Classico or Star ranges

## Appliances

- ✓ OMEGA stainless steel 600mm built-in Oven
- ✓ OMEGA stainless steel 600mm gas Cooktop
- ✓ OMEGA stainless steel 600mm rangehood

## Splashback

- ✓ Tiled Kitchen Splashback or Window Splashback as per design

## Accessories

- ✓ Dishwasher provision including single powerpoint and plumbing point
- ✓ Microwave single powerpoint provision
- ✓ Cooktop provision including single powerpoint
- ✓ Rangehood provision including single powerpoint
- ✓ Fridge provision including single powerpoint



# Bathrooms, Ensuites Powder Rooms, WC's

## Vanities

- ✔ Forme polymerable or porcelain vanity tops
- ✔ Forme laminate or polyurethane vanity cabinets finish

## Tapware

- ✔ Alder chrome tapware throughout from our wide Classico or Star ranges
- ✔ Alder shower mixer to all shower heads our wide Classico or Star ranges

## Tiles

- ✔ Ceramic Floor tiles to all wet areas
- ✔ Bathroom / Ensuites tiling to be done to floor, skirting (one row of tiles) and 2.1m to shower area
- ✔ Powder Room tiling to be done to floor and skirting (one row of tiles)

## Toilets

- ✔ Forme Blade back to wall toilet suite with soft close seat

## Accessories

- ✔ Contour semi frameless shower screens to bathrooms / ensuites
- ✔ Frameless mirror with polished edge
- ✔ 1500 built-in bath tub installed with white chrome waste
- ✔ Alder towel rails and rings in chrome from our Star range
- ✔ Alder toilet roll holders in chrome from our Star range
- ✔ Chrome floor wastes (where required)

## Quality Workmanship

- ✔ Waterproofing to all wet areas (not just the shower recess areas)



# Laundry

- ✓ Everhard 45Ltr Utility Tub and Cabinet
- ✓ Laundry tiling to be done to floor, skirting and splashback above laundry tub (one row of tiles)
- ✓ Corinthian external Laundry Doors
- ✓ Lane door furniture from our Calletta and Monte Bello range



# Light Fixtures

- ✓ Up to 10 x double power point as per design
- ✓ Up to 6 x oyster lights as per design
- ✓ Up to 6 x LED downlights as per design
- ✓ 1 x fluorescent light to garage
- ✓ 1 x external double spotlight with sensor
- ✓ 2-in-1 exhaust fan, heater and light combination to bathrooms and Ensuites
- ✓ Exhaust fan installed to powder rooms and laundry (as required)





# Flooring

- ✔ Laminate floors or tiles from our builder range to hallway, kitchen and main living area
- ✔ Carpet to all bedrooms
- ✔ Carpet to first floor for double storey as per design
- ✔ Carpet to stairs for double storey as per design
- ✔ Tiling to Entry Porch and Alfresco as per design



# Everything Else

## Plan Approvals

- ✓ Plans and detailed Drawings including compliant landscape plans
- ✓ Detailed Contour Plan
- ✓ BASIX Certificate to State Government Requirements
- ✓ Standard Certifier / Council application fees
- ✓ Standard statutory water authority approval fee
- ✓ Home Owners Warranty Insurance
- ✓ Power, water and gas connections including usage during construction stage

## Fixed Site Costs

- ✓ Reinforced environmentally friendly plastic pod slab to engineering details (subject to site conditions)
- ✓ Fixed Piering and site costs including grading and levelling of site as per plans
- ✓ Peg out survey and formwork check
- ✓ Temporary construction fence and onsite chemical toilet
- ✓ Sediment control barriers (as required)
- ✓ Provide all weather access (as required)

## Services

- ✓ Storm Water drains connected to legal discharge point
- ✓ Sewer Drain Connected to legal discharge point
- ✓ Water Connection including water tapping
- ✓ Natural gas connection (if available)
- ✓ Electrical metering to street mains
- ✓ 180 day maintenance period



# Landscape Package

- ✔ Wall mounted Clothesline
- ✔ Letterbox from our builders' range
- ✔ Coloured Concrete Driveway
- ✔ Turf to frontyard and backyard
- ✔ Garden beds is not included
- ✔ Fencing & Pebbles to both sides of home are not included



# LUXURY UPGRADES

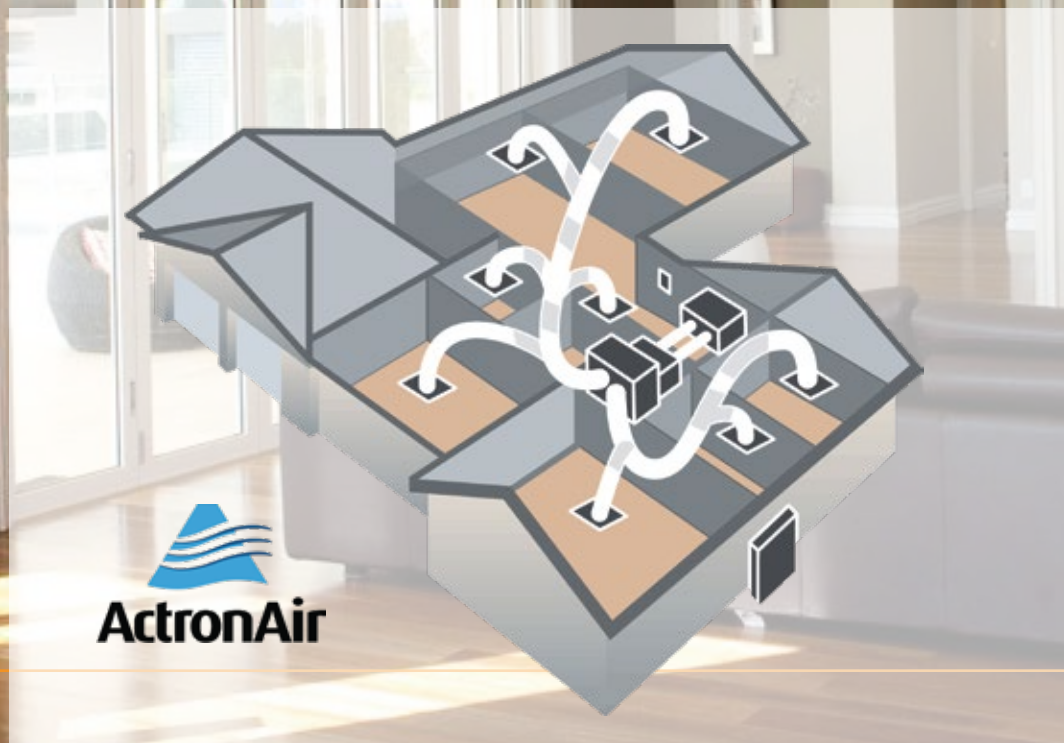
VALUED AT \$20,000

**FREE**

# Ducted Air

FREE UPGRADE VALUED \$10,000

Actron Ducted Air Conditioning (to suit the size of the house) day / night zoning



# Appliances

FREE UPGRADE VALUED \$4,000

- ✔ Upgrade to free standing 900mm OMEGA oven & cooktop
- ✔ Upgrade to concealed 700mm OMEGA concealed rangehood

OR

- ✔ Upgrade to free standing 900mm SMEG oven & cooktop
- ✔ Upgrade to concealed 700mm SMEG concealed rangehood



omega



smeg  
tecnologia che arreda

# Lavish Upgrades

FREE UPGRADE VALUED \$6,000

## Front Door

- ✓ Upgrade to 920mm front entry door from our wide Urban Corinthian Range, as per design

## Garage Door

- ✓ Upgrade your Colorbond 2040 high garage door to 2340 high garage door
- ✓ Choose from our wide panelift range with over 20 colour choices

## Flyscreens

- ✓ Mesh screen doors to laundry doors

## Insulation

- ✓ Batts to roof space over living areas under roof tiles, excluding garage
- ✓ R3.0 thermal insulation to ceiling, excluding garage

## Bathtub

- ✓ Forme Oval FREE standing bathtub installed with white chrome waste

## Kitchen

- ✓ Upgrade cabinets and drawers to soft close doors and drawers
- ✓ OMEGA 600mm Dishwasher

## Light Fixtures

- ✓ 5 x double power point as per design
- ✓ 5 x oyster lights as per design
- ✓ 5 x LED downlights as per design

## Niches

- ✓ 600H x 400W Niche to Ensuites
- ✓ 600H x 400W Niche to Bathrooms



## Our Display Home Locations

### Homeworld Emerald Hills (Leppington)

25 & 27 Coral Circuit,  
Emerald Hills, Leppington  
(Homeworld)

### Edmondson Park Village Square Display Homes

20 & 22 Clement Road,  
Village Square,  
Edmondson Park 2174

### Oran Park Display Home

40 Webber Loop,  
Oran Park 2570

**Terms and Conditions Apply** – these inclusions exclude duplexes, dual occupancy granny flats and custom designed homes. All offers in this document are not available with any other offer(s) unless specified. Where an item is required to be upgraded or substituted due to site specific requirements of an Authority, including but not limited to compliance with matters such as hydraulics, bushfire BAL rating, and/or acoustic requirements extra charges may apply. Images in Vogue Homes brochures may depict fixtures, finishes and features not supplied by Vogue Homes or included in the Price including but not limited to retaining walls, landscaping, driveways and pathways, pergola, barbeque, decorator items, feature wall, decorator screen and shelving, water features, fencing, swimming pools, decks, fixtures and letter boxes. All internal and external decor items are excluded. Photos are indicative only. Refer to specifications for full details. Vogue Homes reserves the right to change or remove any of the included items, specifications and suppliers at its discretion, without notice and without client's approval. The price includes only these items specifically included in this document (not depicted by the pictures). Ducted Air unit is suitable for the selected home. Products shown are subject to home designs. Any item not listed above will incur additional cost. All products have individual warranties by the respective manufacturer/distributor. Vogue Homes is not responsible for these warranties. Ask your new home consultant for house specific inclusions.