

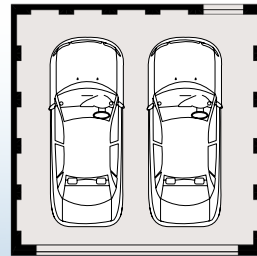
Lot 105

Staten-Charlton

Type B1_C



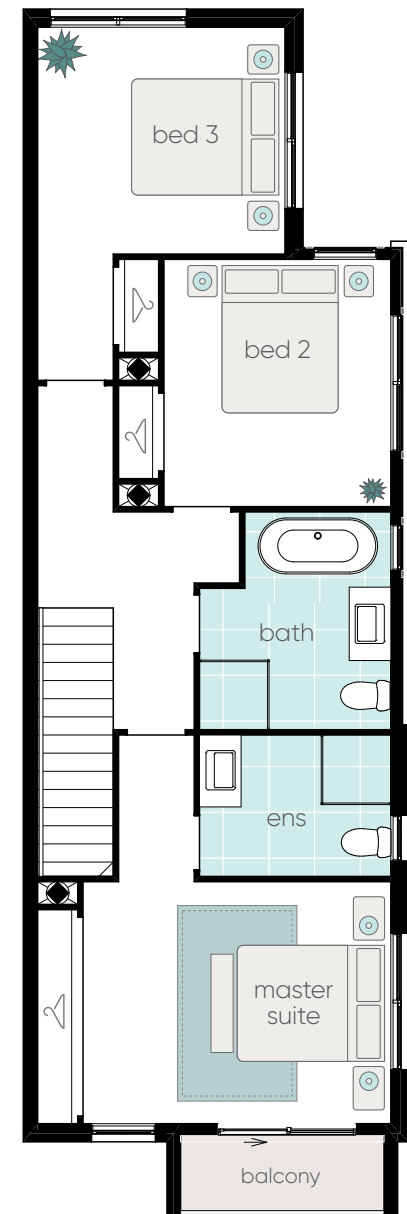
Living (Ground Floor)	64.48 m ²
Living (First Floor)	71.93 m ²
Balcony	3.05 m ²
Patio	8.41 m ²
Porch	1.48 m ²
Garage	37.08 m ²
TOTAL	186.43 m²



garage
(rear - loaded)



ground floor



first floor

