



# Onyx

---

COMMUNITY LIVING

ONYX WAY, TARNEIT

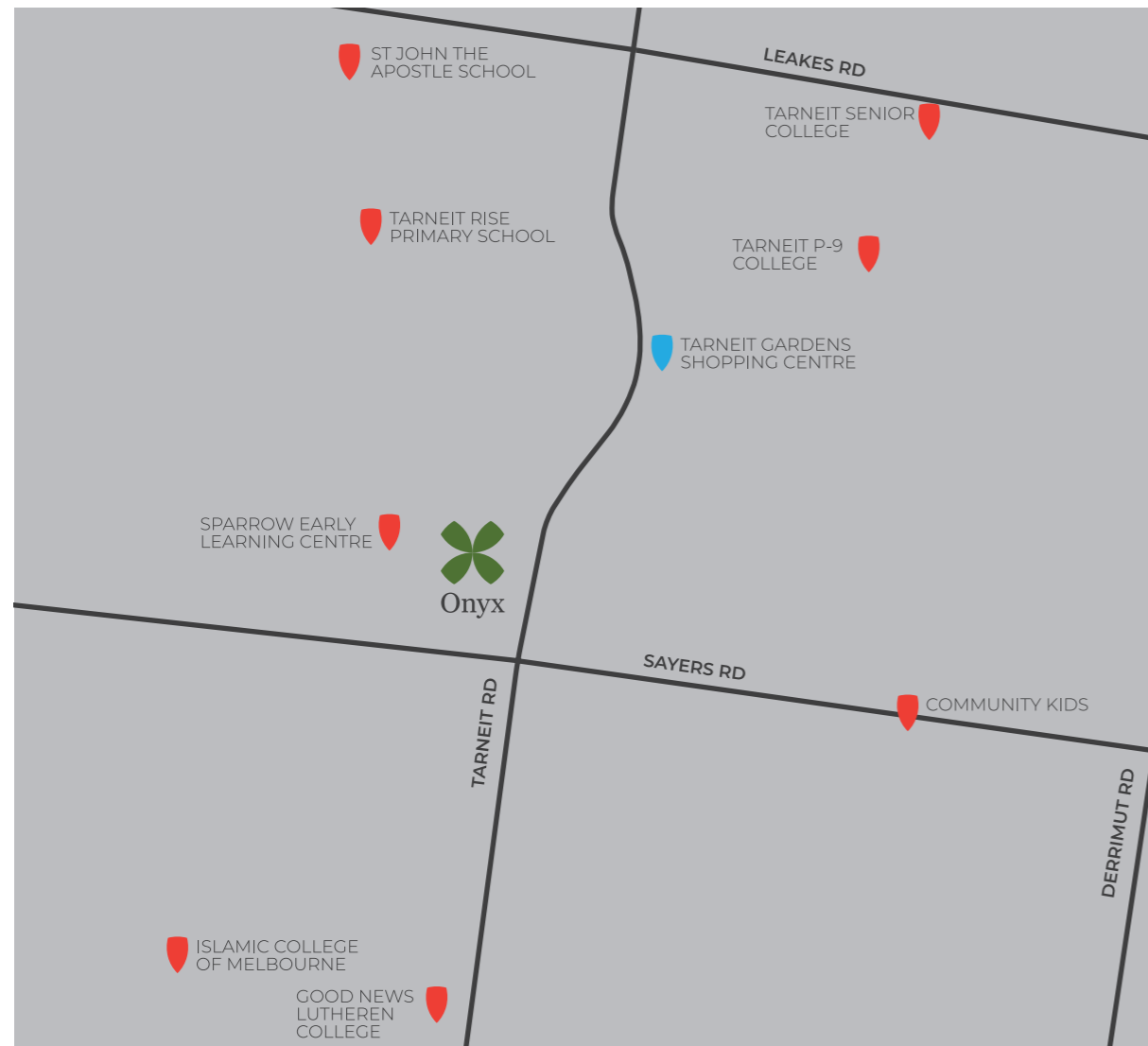




# Onyx

Onyx presents an exciting opportunity to join a vibrant and established residential community in one of Melbourne's growth areas.

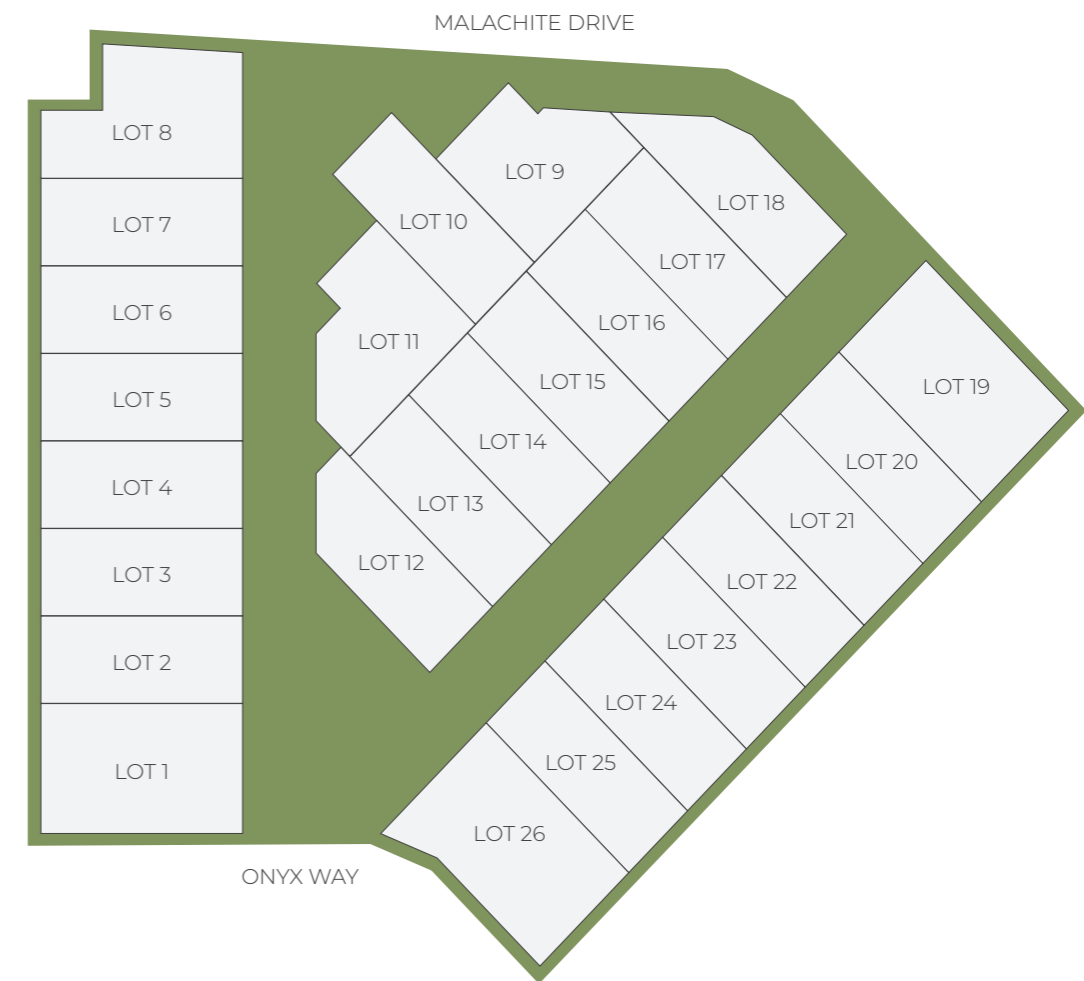
Set amongst landscaped parklands, enjoy the benefits of architecturally designed, townhome living in an exclusive residential community with access to local shops, parks and public transport facilities.



# Overview

Onyx presents an exciting opportunity to join a vibrant and established residential community in one of Melbourne's growth areas.

Set amongst landscaped parklands, enjoy the benefits of architecturally designed, townhome living in an exclusive residential community with access to local shops, parks and public transport facilities.



TARNEIT COLLEGE

TARNEIT GARDENS SHOPPING CENTRE

CBD



Onyx

TARNEIT ROAD

SAYERS ROAD

EARLY LEARNING CENTRE





# Design

---

## *Architecture*

Architecturally designed by the team at BDN, Onyx represents a new standard of community living. Carefully considered and functional spaces provide for great internal amenity, set amongst a series of landscaped spaces.

BDN is an architecture, planning and design practice based in Collingwood, Melbourne. Their design process seeks to create spaces that are connected to their function and context. BDN has continually set record prices for their multi-residential projects and continues to deliver projects across Melbourne, including:

- Queen
- The Esplanade
- Lygon Apartments









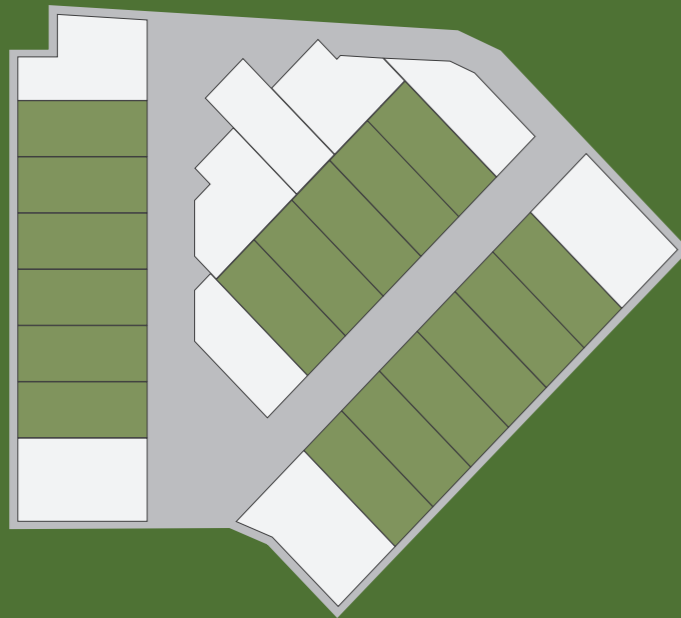


# Type A (Lots 2-7, 13-17, 20-25)

 x2  
  x2.5  
  x1  
  x1

## Area

Ground Floor 74 sqm  
 First Floor 66 sqm  
 Lot Area 111 sqm

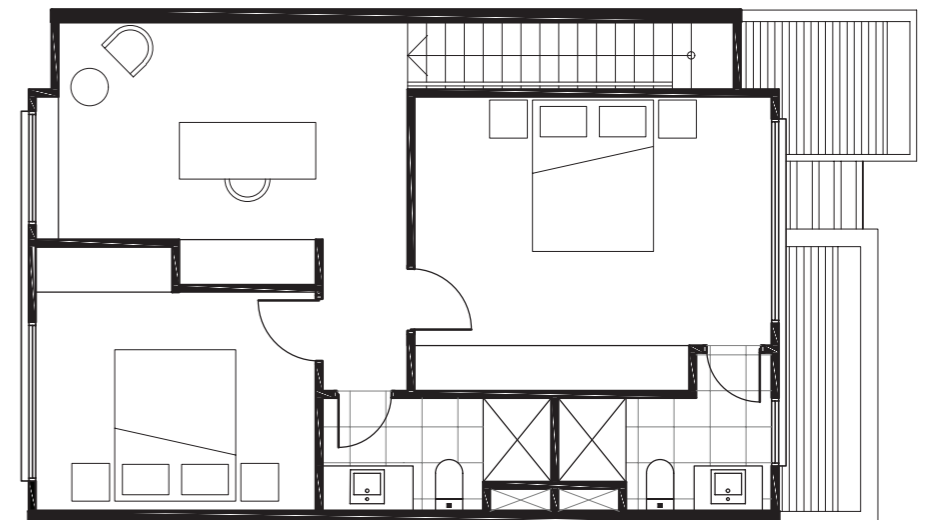


## Disclaimer

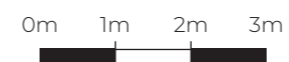
This document shows the proposed floor plan for the nominated property within the proposed development called Onyx. The contents of this document are based on information available to and the intention of developer at the time of creation of this document May 2020. All dimensions and areas are approximate and are subject to change. The contract for sale should be reviewed in relation to the dimensions, areas, sale inclusions and specifications for the specified property. Furniture, furnishings, decorative items, cars, street trees, street plants and street landscaping and the like are shown for indicative purposes only and are not included in the sale. Any trees, plants and landscaping shown within the specified lot are for indicative purposes only. Variations in colour may occur during the printing process. Colours shown are indicative only and are not accurate representations of the actual colours. Dimensions are taken from the outside face of all walls, balustrades and supports or the centre line of a shared exterior wall.



GROUND FLOOR



FIRST FLOOR

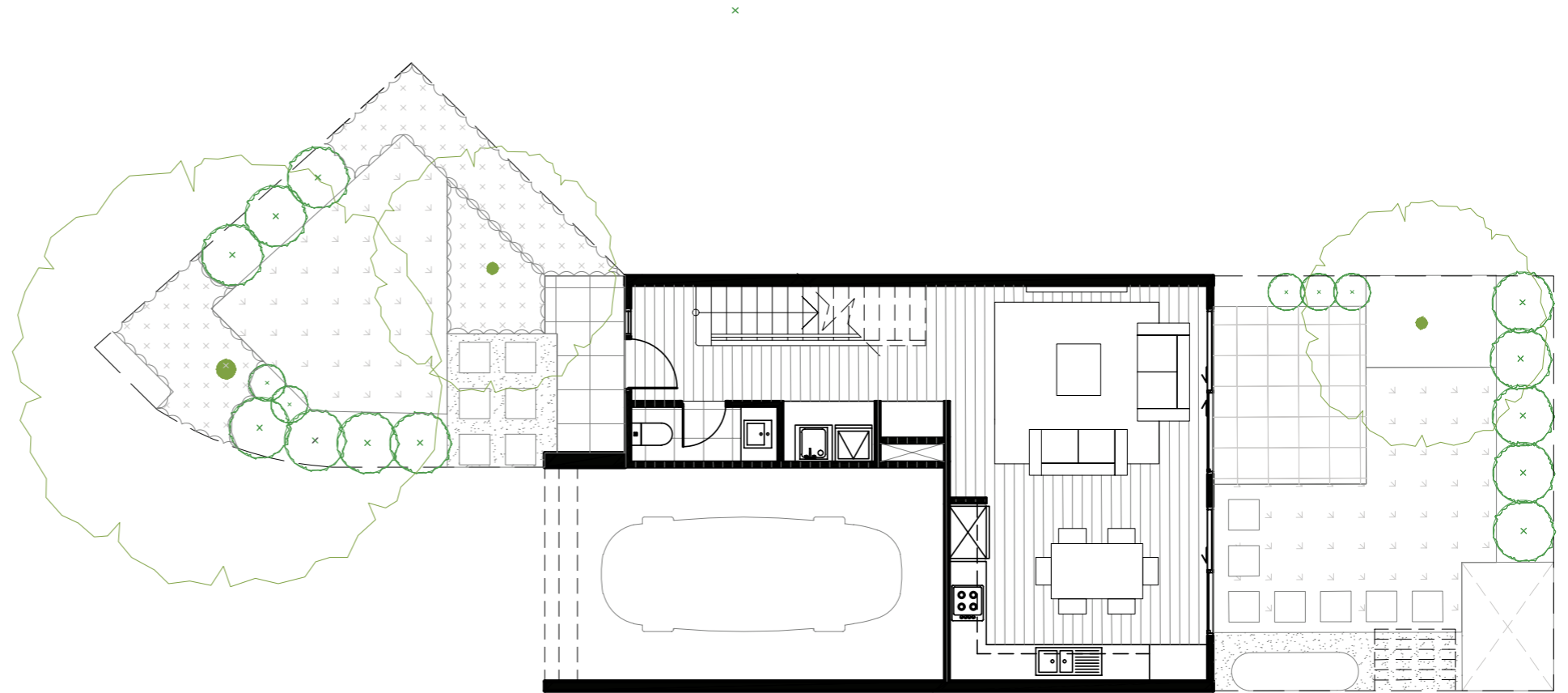
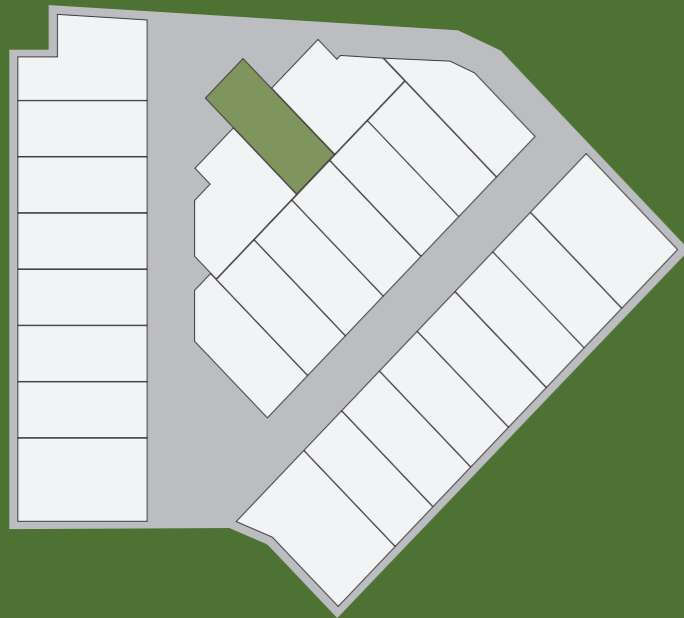


# Type B (Lot 10)

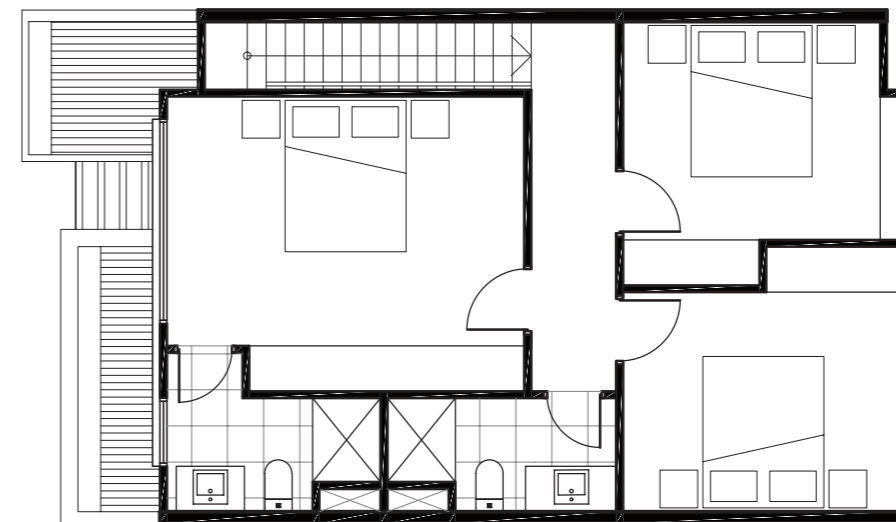
 x3  
  x2.5  
  x1

## Area

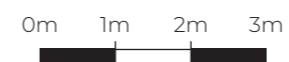
Ground Floor 74 sqm  
 First Floor 66 sqm  
 Lot Area 144 sqm



GROUND FLOOR



FIRST FLOOR



## Disclaimer

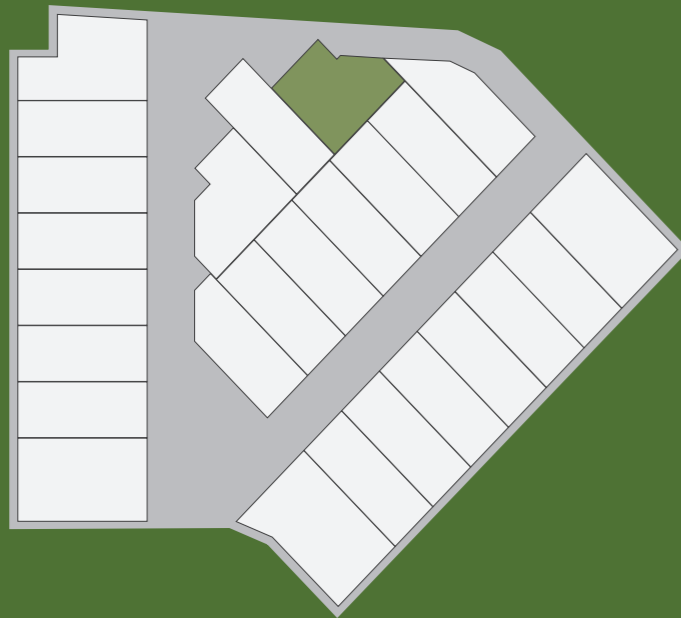
This document shows the proposed floor plan for the nominated property within the proposed development called Onyx. The contents of this document are based on information available to and the intention of developer at the time of creation of this document May 2020. All dimensions and areas are approximate and are subject to change. The contract for sale should be reviewed in relation to the dimensions, areas, sale inclusions and specifications for the specified property. Furniture, furnishings, decorative items, cars, street trees, street plants and street landscaping and the like are shown for indicative purposes only and are not included in the sale. Any trees, plants and landscaping shown within the specified lot are for indicative purposes only. Variations in colour may occur during the printing process. Colours shown are indicative only and are not accurate representations of the actual colours. Dimensions are taken from the outside face of all walls, balustrades and supports or the centre line of a shared exterior wall.

# Type C (Lot 9)

 x3  
  x2.5  
  x1

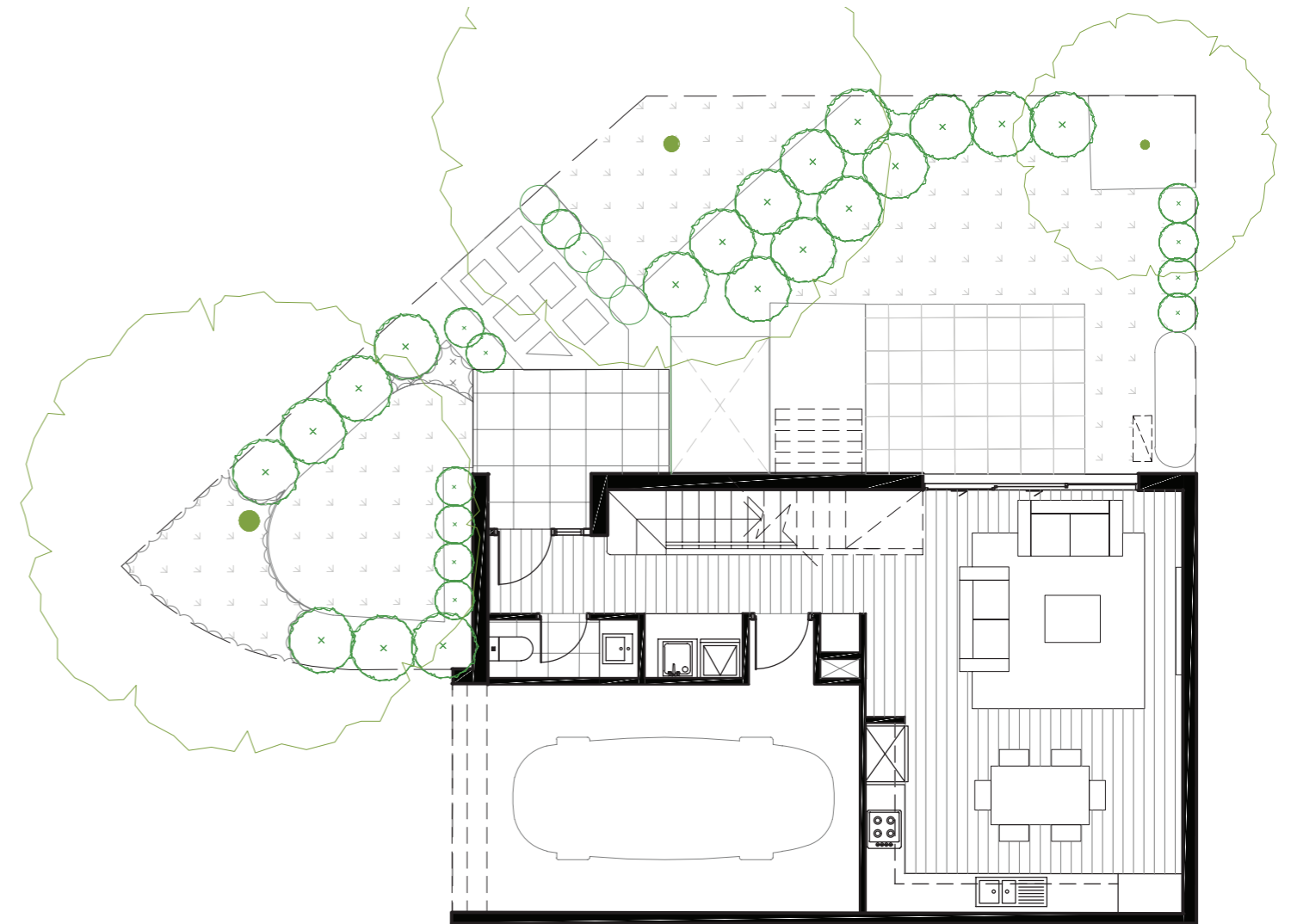
## Area

Ground Floor 80 sqm  
 First Floor 61 sqm  
 Lot Area 150 sqm

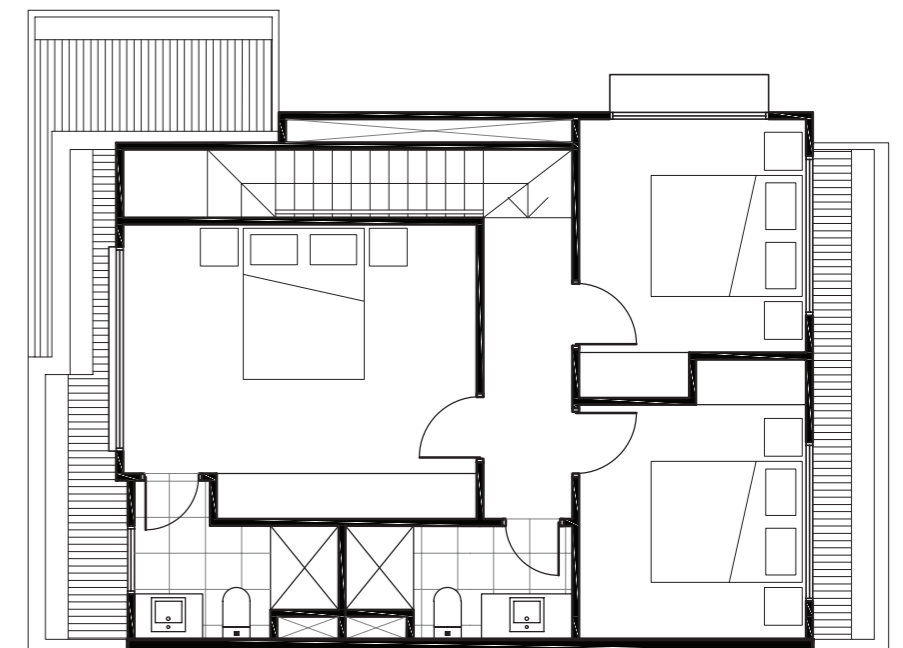


### Disclaimer

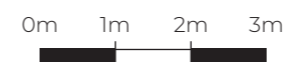
This document shows the proposed floor plan for the nominated property within the proposed development called Onyx. The contents of this document are based on information available to and the intention of developer at the time of creation of this document May 2020. All dimensions and areas are approximate and are subject to change. The contract for sale should be reviewed in relation to the dimensions, areas, sale inclusions and specifications for the specified property. Furniture, furnishings, decorative items, cars, street trees, street plants and street landscaping and the like are shown for indicative purposes only and are not included in the sale. Any trees, plants and landscaping shown within the specified lot are for indicative purposes only. Variations in colour may occur during the printing process. Colours shown are indicative only and are not accurate representations of the actual colours. Dimensions are taken from the outside face of all walls, balustrades and supports or the centre line of a shared exterior wall.



GROUND FLOOR



FIRST FLOOR

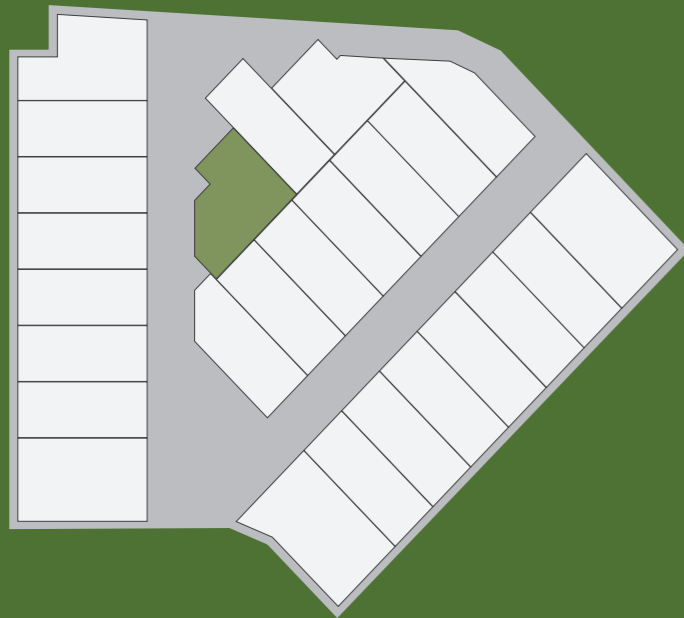


# Type D (Lot 11)

 x3  
  x2.5  
  x1

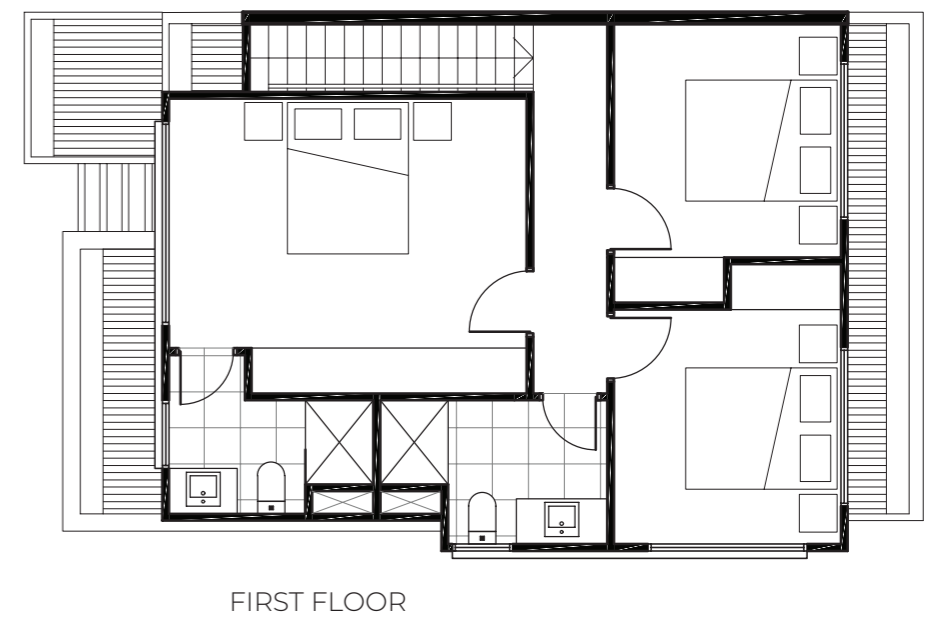
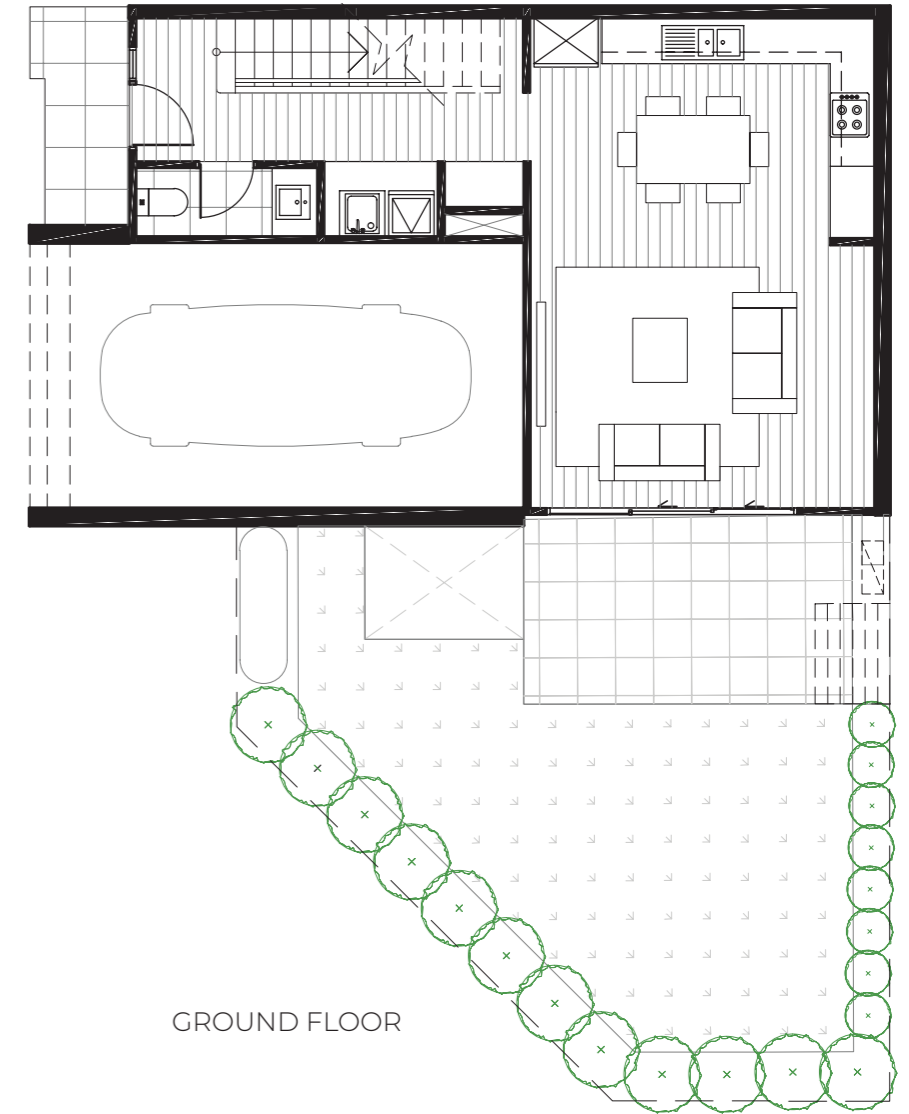
## Area

Ground Floor 77 sqm  
 First Floor 61 sqm  
 Lot Area 147 sqm



### Disclaimer

This document shows the proposed floor plan for the nominated property within the proposed development called Onyx. The contents of this document are based on information available to and the intention of developer at the time of creation of this document May 2020. All dimensions and areas are approximate and are subject to change. The contract for sale should be reviewed in relation to the dimensions, areas, sale inclusions and specifications for the specified property. Furniture, furnishings, decorative items, cars, street trees, street plants and street landscaping and the like are shown for indicative purposes only and are not included in the sale. Any trees, plants and landscaping shown within the specified lot are for indicative purposes only. Variations in colour may occur during the printing process. Colours shown are indicative only and are not accurate representations of the actual colours. Dimensions are taken from the outside face of all walls, balustrades and supports or the centre line of a shared exterior wall.



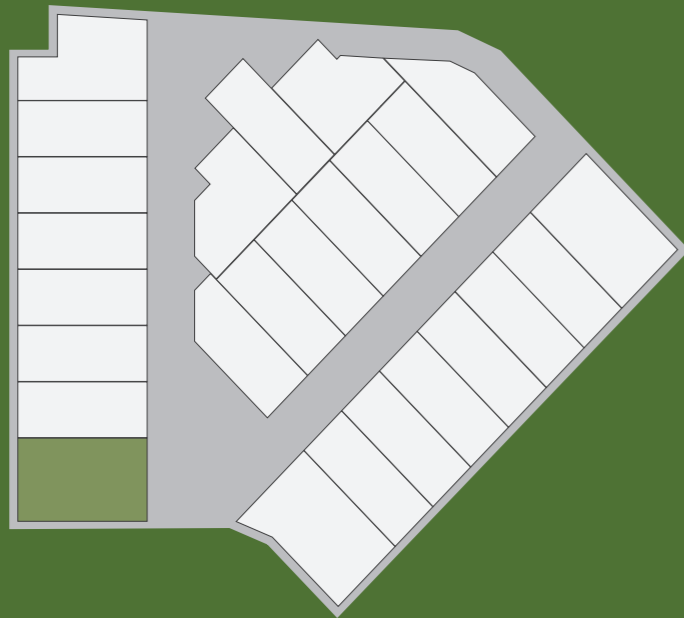
0m 1m 2m 3m

# Type E (Lot 1)

 x2  
  x2.5  
  x1  
  x1

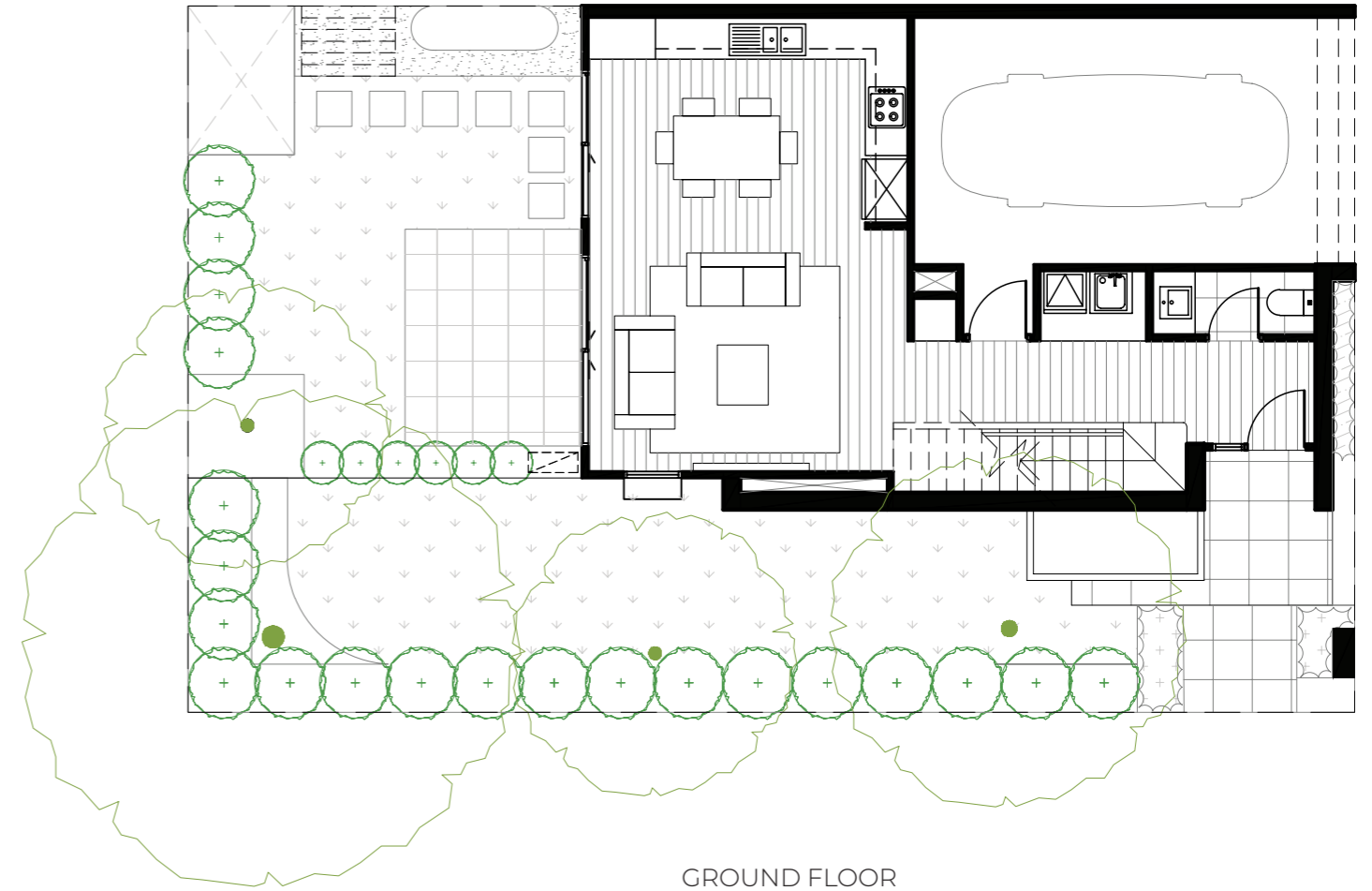
## Area

Ground Floor 76 sqm  
 First Floor 60 sqm  
 Lot Area 164 sqm

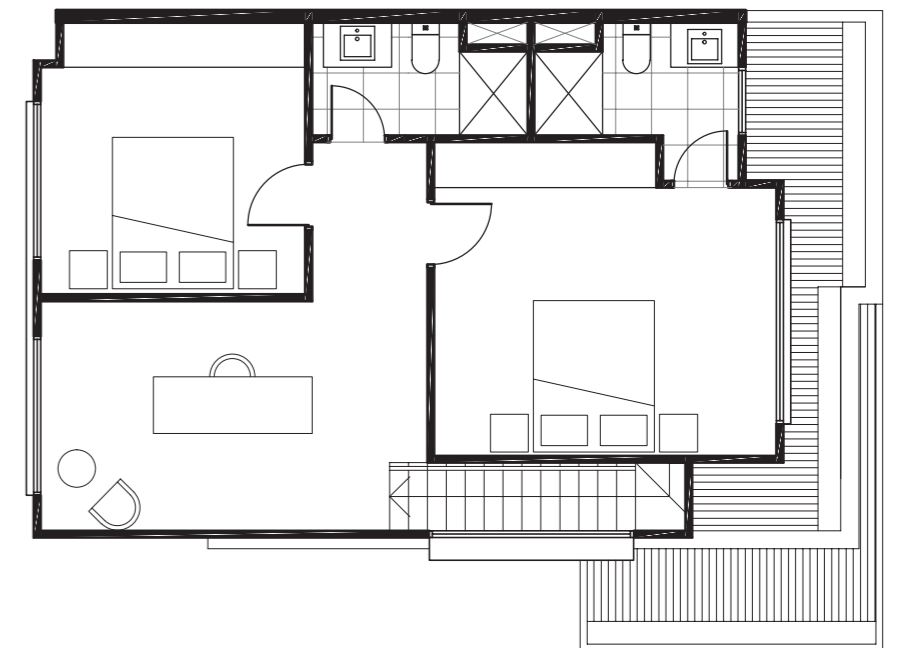


### Disclaimer

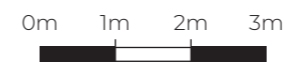
This document shows the proposed floor plan for the nominated property within the proposed development called Onyx. The contents of this document are based on information available to and the intention of developer at the time of creation of this document May 2020. All dimensions and areas are approximate and are subject to change. The contract for sale should be reviewed in relation to the dimensions, areas, sale inclusions and specifications for the specified property. Furniture, furnishings, decorative items, cars, street trees, street plants and street landscaping and the like are shown for indicative purposes only and are not included in the sale. Any trees, plants and landscaping shown within the specified lot are for indicative purposes only. Variations in colour may occur during the printing process. Colours shown are indicative only and are not accurate representations of the actual colours. Dimensions are taken from the outside face of all walls, balustrades and supports or the centre line of a shared exterior wall.



GROUND FLOOR



FIRST FLOOR

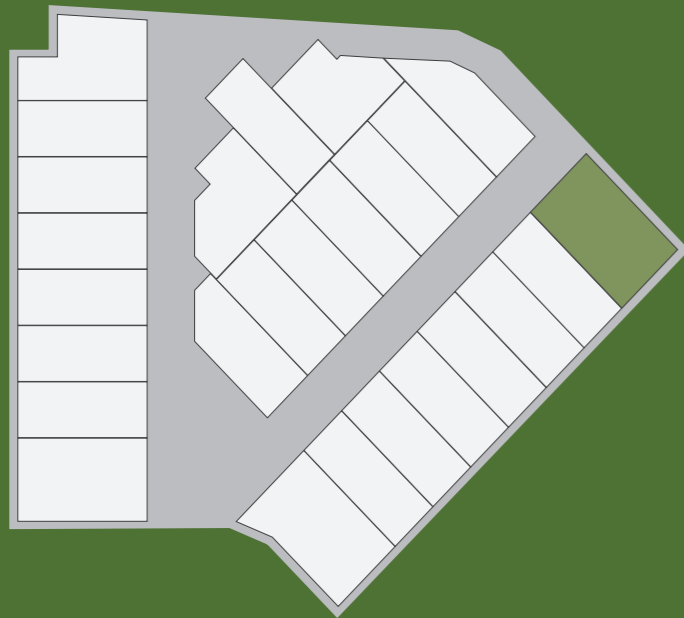


# Type E (Lot 19)

 x2  
  x2.5  
  x1  
  x1

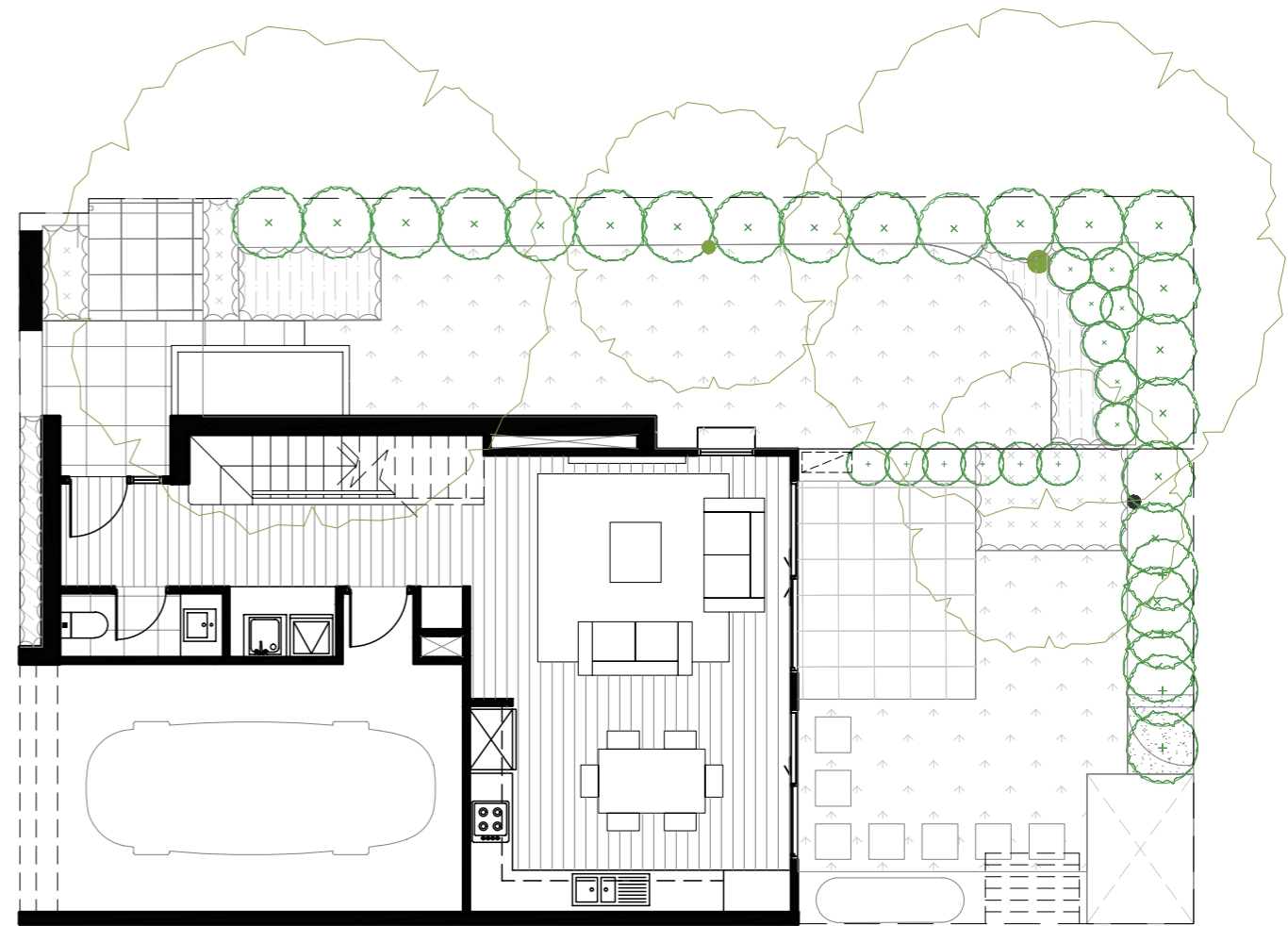
## Area

Ground Floor 76 sqm  
 First Floor 60 sqm  
 Lot Area 167 sqm

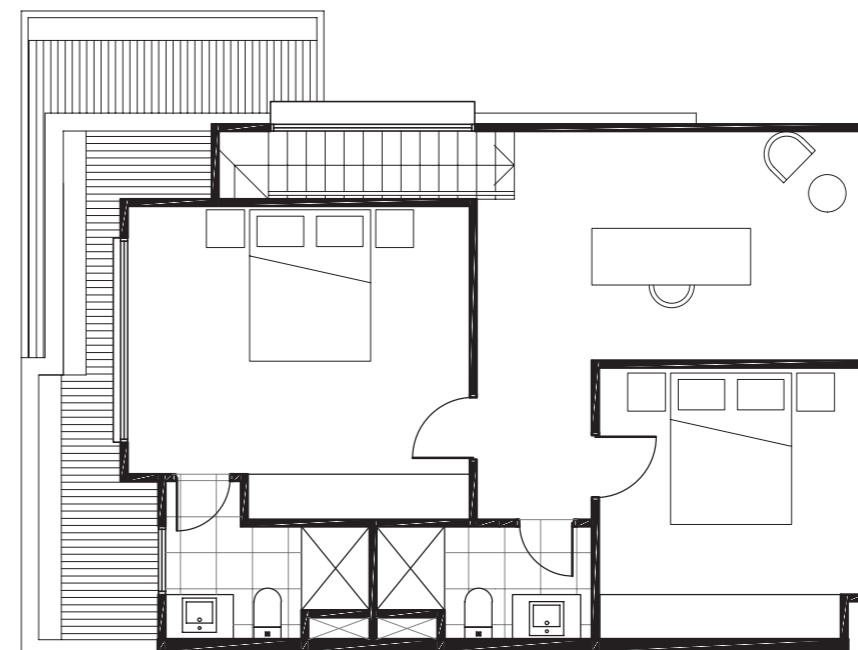


### Disclaimer

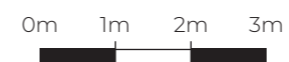
This document shows the proposed floor plan for the nominated property within the proposed development called Onyx. The contents of this document are based on information available to and the intention of developer at the time of creation of this document May 2020. All dimensions and areas are approximate and are subject to change. The contract for sale should be reviewed in relation to the dimensions, areas, sale inclusions and specifications for the specified property. Furniture, furnishings, decorative items, cars, street trees, street plants and street landscaping and the like are shown for indicative purposes only and are not included in the sale. Any trees, plants and landscaping shown within the specified lot are for indicative purposes only. Variations in colour may occur during the printing process. Colours shown are indicative only and are not accurate representations of the actual colours. Dimensions are taken from the outside face of all walls, balustrades and supports or the centre line of a shared exterior wall.





GROUND FLOOR



FIRST FLOOR

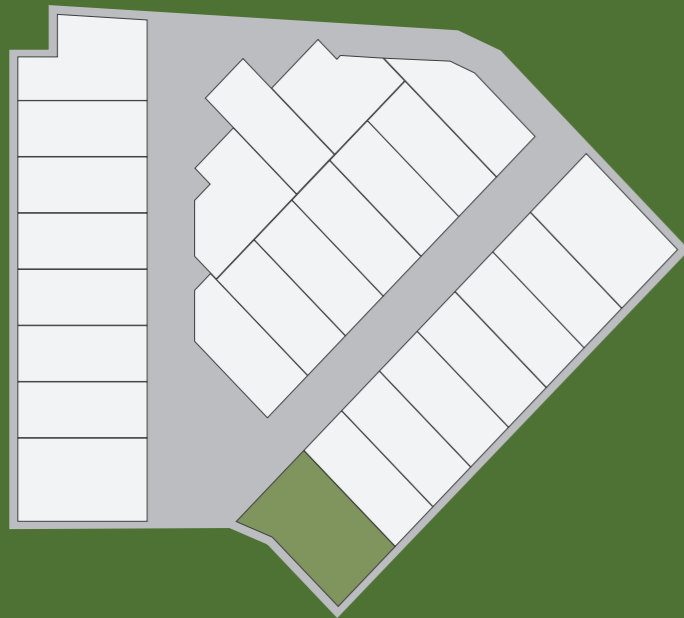


# Type E (Lot 26)

 x2  
  x2.5  
  x1  
  x1

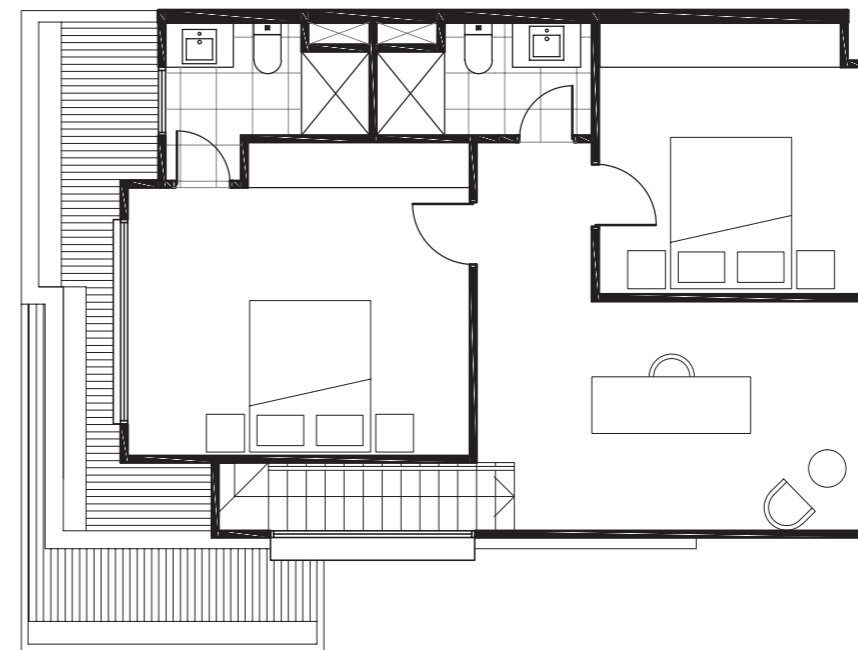
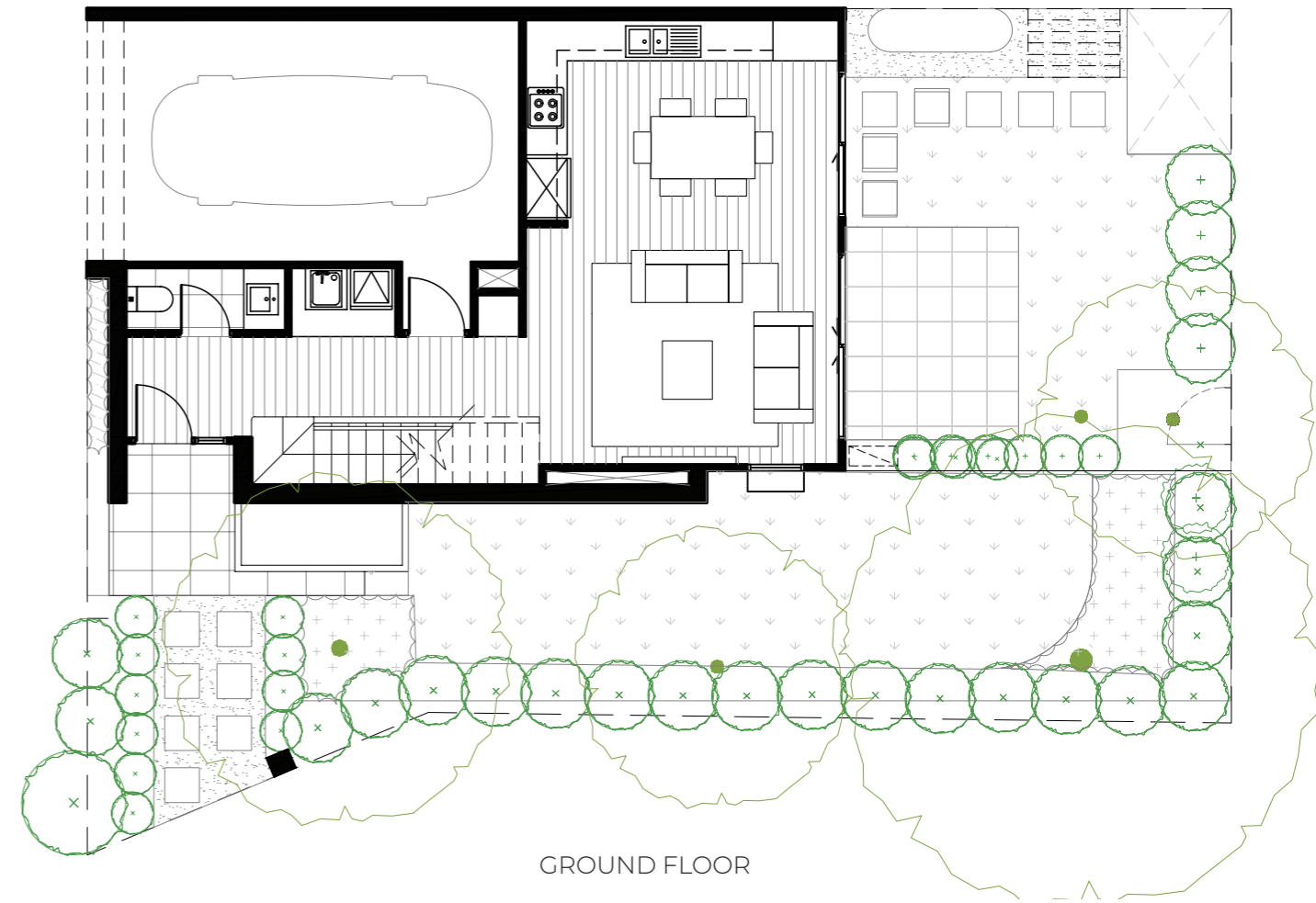
## Area

Ground Floor 76 sqm  
 First Floor 60 sqm  
 Lot Area 169 sqm



### Disclaimer

This document shows the proposed floor plan for the nominated property within the proposed development called Onyx. The contents of this document are based on information available to and the intention of developer at the time of creation of this document May 2020. All dimensions and areas are approximate and are subject to change. The contract for sale should be reviewed in relation to the dimensions, areas, sale inclusions and specifications for the specified property. Furniture, furnishings, decorative items, cars, street trees, street plants and street landscaping and the like are shown for indicative purposes only and are not included in the sale. Any trees, plants and landscaping shown within the specified lot are for indicative purposes only. Variations in colour may occur during the printing process. Colours shown are indicative only and are not accurate representations of the actual colours. Dimensions are taken from the outside face of all walls, balustrades and supports or the centre line of a shared exterior wall.



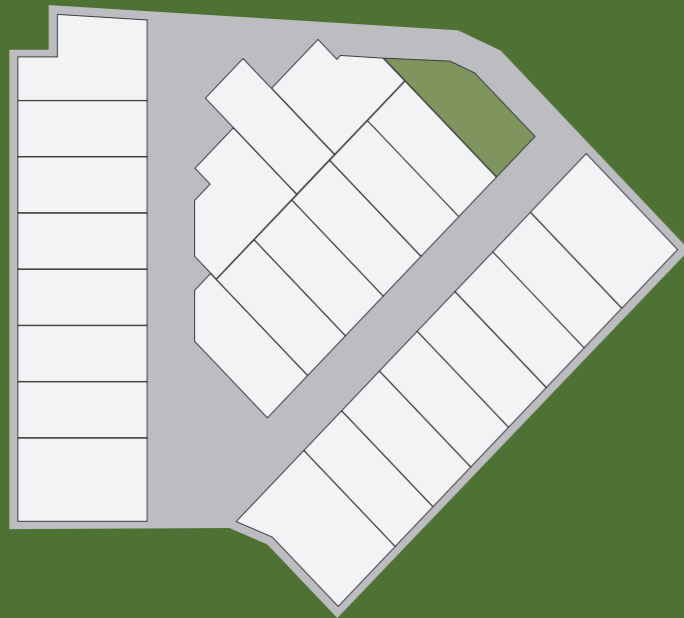
0m 1m 2m 3m

# Type F (Lot 18)

 x2  
  x2.5  
  x1  
  x1

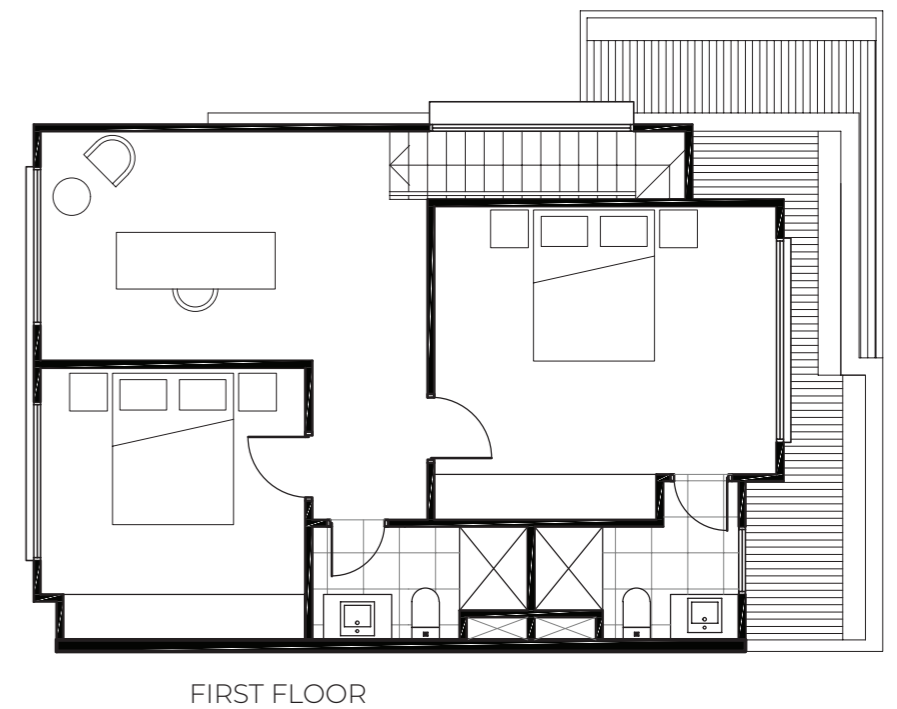
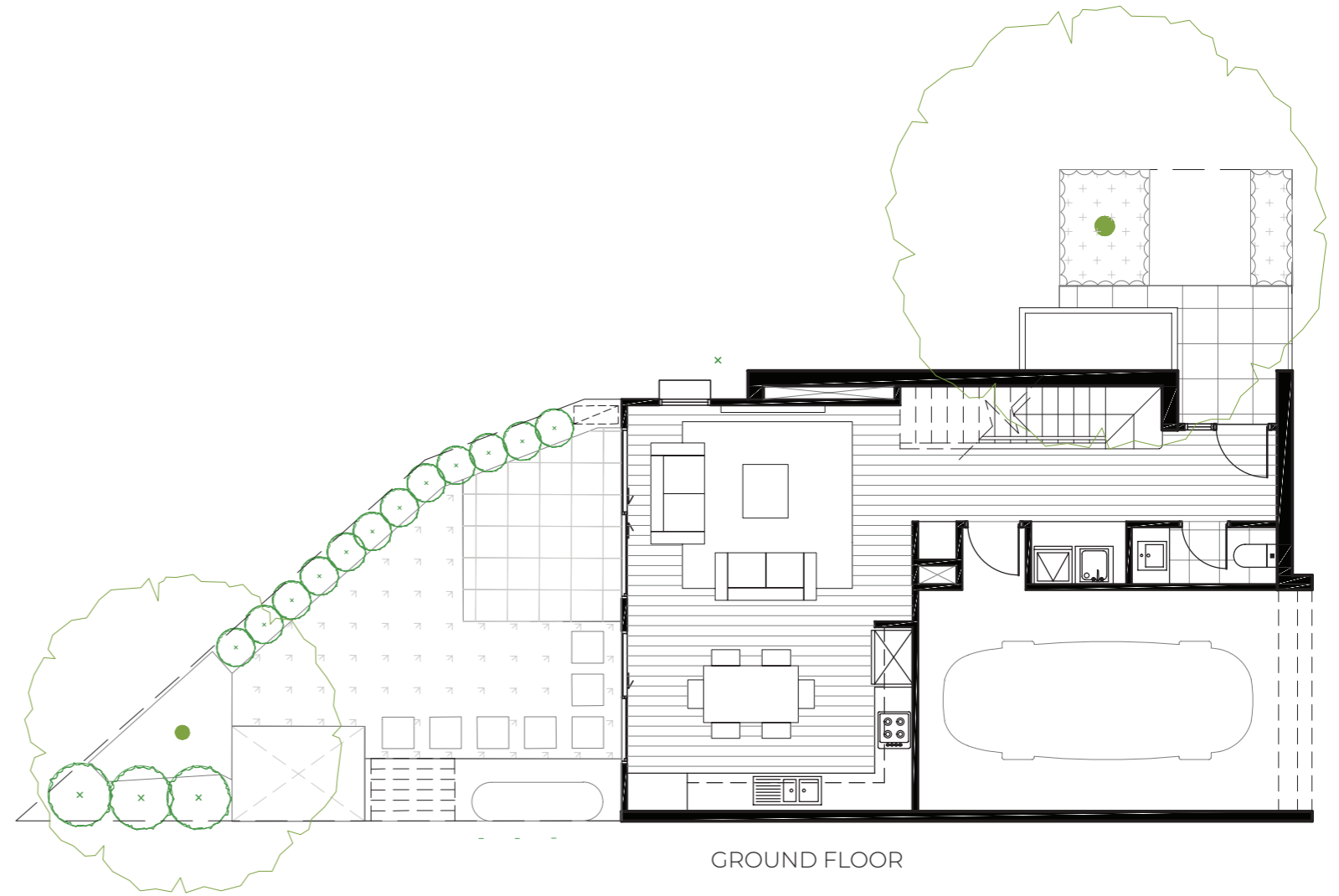
## Area

Ground Floor 76 sqm  
 First Floor 60 sqm  
 Lot Area 127 sqm



### Disclaimer

This document shows the proposed floor plan for the nominated property within the proposed development called Onyx. The contents of this document are based on information available to and the intention of developer at the time of creation of this document May 2020. All dimensions and areas are approximate and are subject to change. The contract for sale should be reviewed in relation to the dimensions, areas, sale inclusions and specifications for the specified property. Furniture, furnishings, decorative items, cars, street trees, street plants and street landscaping and the like are shown for indicative purposes only and are not included in the sale. Any trees, plants and landscaping shown within the specified lot are for indicative purposes only. Variations in colour may occur during the printing process. Colours shown are indicative only and are not accurate representations of the actual colours. Dimensions are taken from the outside face of all walls, balustrades and supports or the centre line of a shared exterior wall.



0m 1m 2m 3m



# Type G (Lot 8)

 x2  
  x2.5  
  x1  
  x1

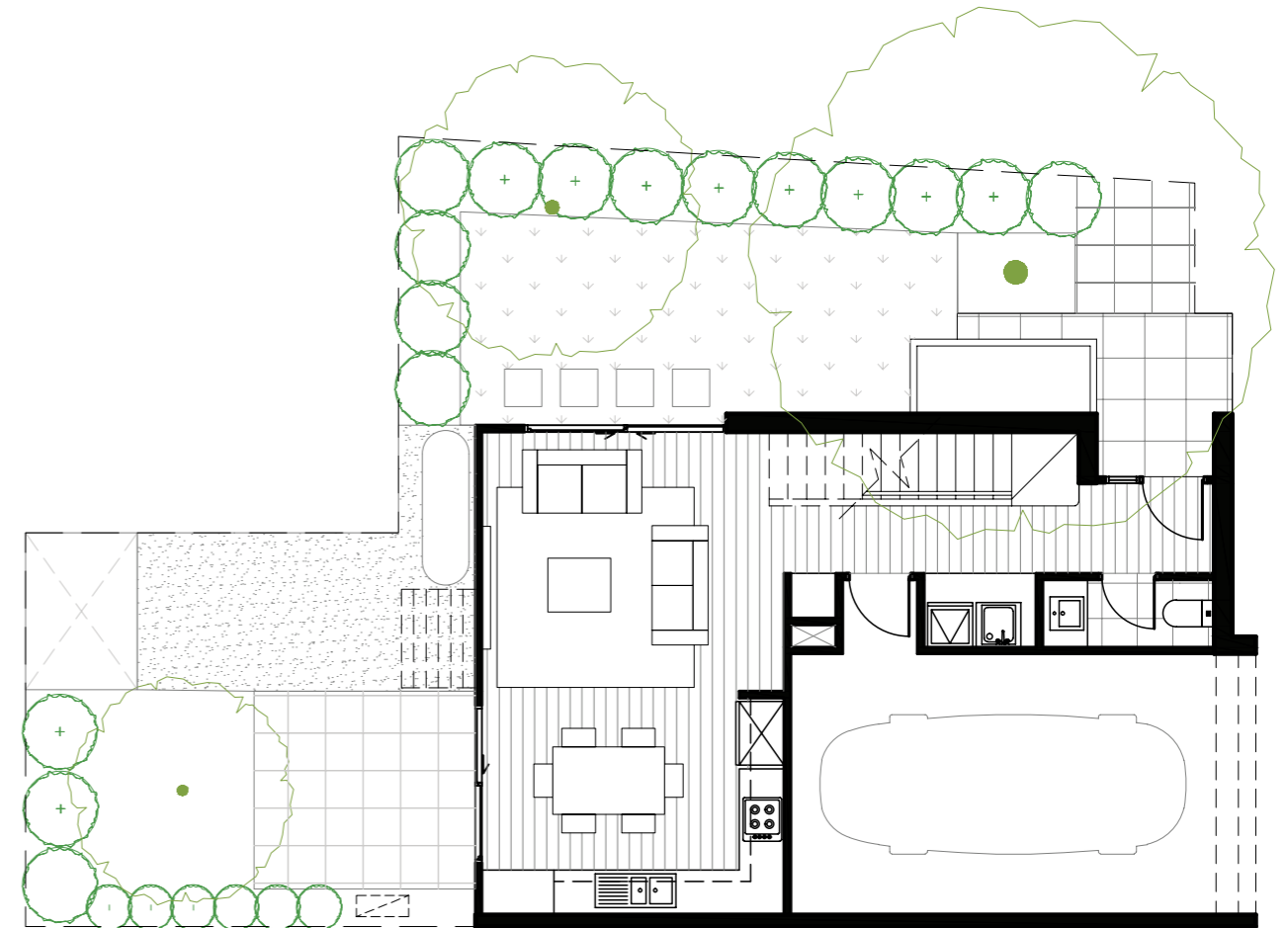
## Area

Ground Floor 76 sqm  
 First Floor 60 sqm  
 Lot Area 143 sqm

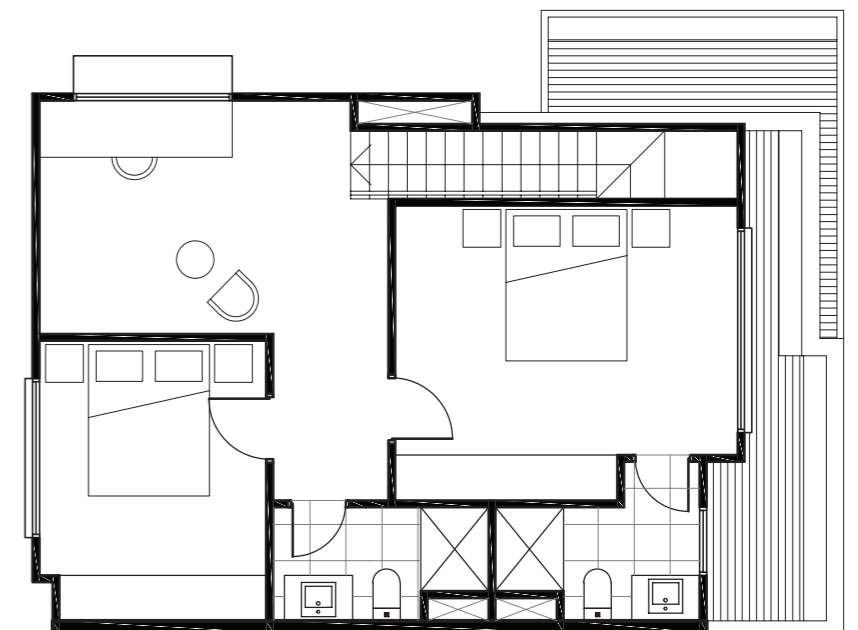


### Disclaimer

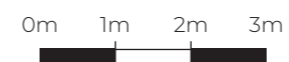
This document shows the proposed floor plan for the nominated property within the proposed development called Onyx. The contents of this document are based on information available to and the intention of developer at the time of creation of this document May 2020. All dimensions and areas are approximate and are subject to change. The contract for sale should be reviewed in relation to the dimensions, areas, sale inclusions and specifications for the specified property. Furniture, furnishings, decorative items, cars, street trees, street plants and street landscaping and the like are shown for indicative purposes only and are not included in the sale. Any trees, plants and landscaping shown within the specified lot are for indicative purposes only. Variations in colour may occur during the printing process. Colours shown are indicative only and are not accurate representations of the actual colours. Dimensions are taken from the outside face of all walls, balustrades and supports or the centre line of a shared exterior wall.



GROUND FLOOR



FIRST FLOOR

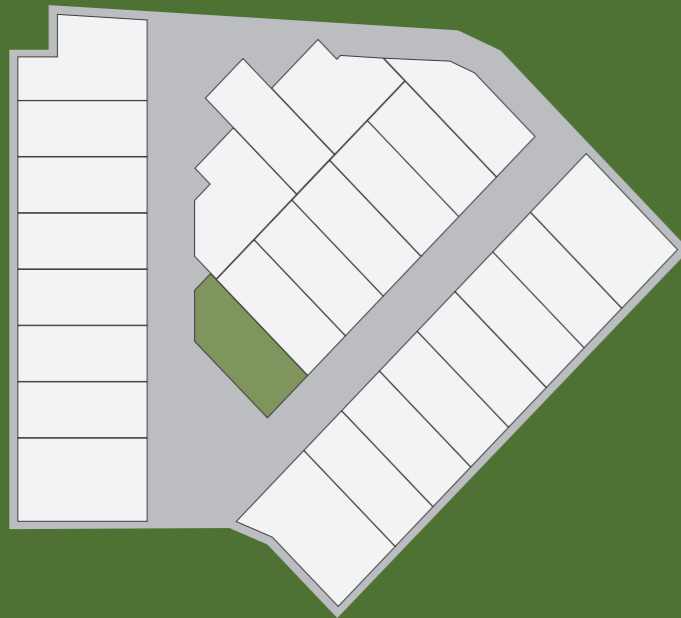


# Type H (Lot 12)

🏠 x2   🚿 x2.5   🚗 x1   🏡 x1

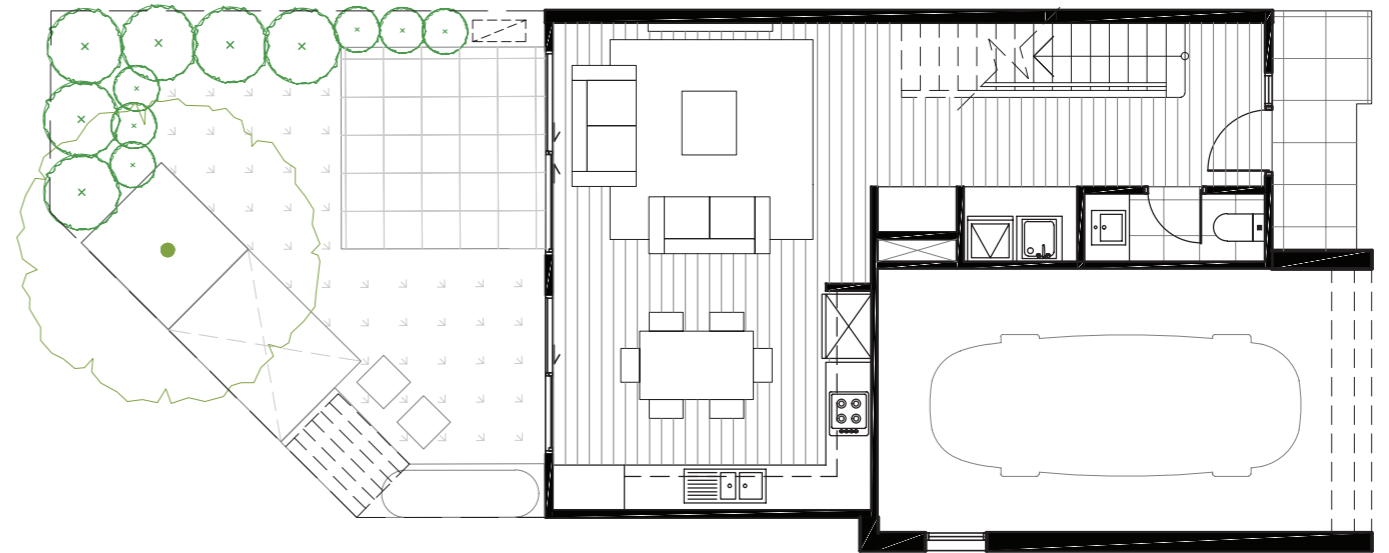
## Area

Ground Floor 74 sqm  
First Floor 60 sqm  
Lot Area 110 sqm

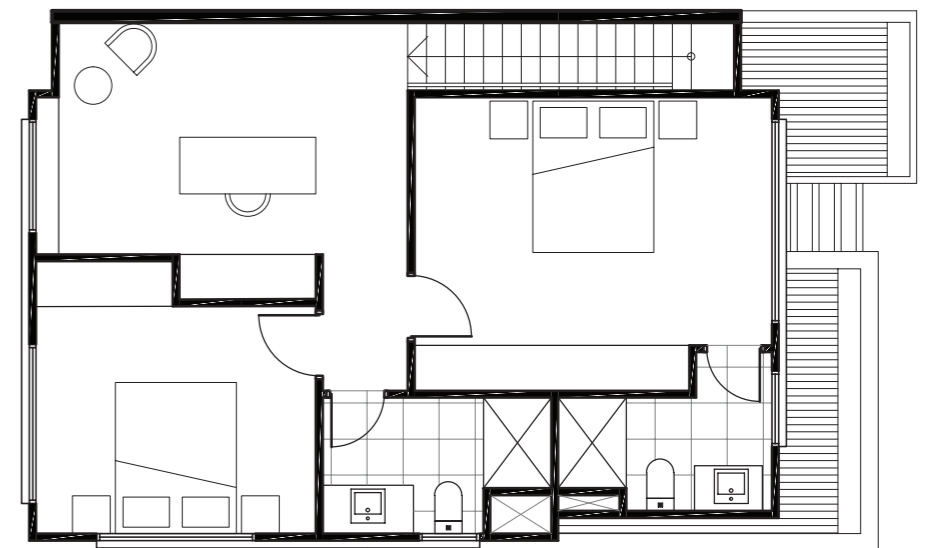


## Disclaimer

This document shows the proposed floor plan for the nominated property within the proposed development called Onyx. The contents of this document are based on information available to and the intention of developer at the time of creation of this document May 2020. All dimensions and areas are approximate and are subject to change. The contract for sale should be reviewed in relation to the dimensions, areas, sale inclusions and specifications for the specified property. Furniture, furnishings, decorative items, cars, street trees, street plants and street landscaping and the like are shown for indicative purposes only and are not included in the sale. Any trees, plants and landscaping shown within the specified lot are for indicative purposes only. Variations in colour may occur during the printing process. Colours shown are indicative only and are not accurate representations of the actual colours. Dimensions are taken from the outside face of all walls, balustrades and supports or the centre line of a shared exterior wall.



GROUND FLOOR



FIRST FLOOR

0m 1m 2m 3m



ONYX WAY, TARNEIT