

SSM CONNECTIONS
 SSM 149834 - SSM 149836 30° 57' 52" - 73.252
 SSM 149836 - SSM 172873 29° 39' 30" - 99.481
 SSM 172873 - SSM 149839 182° 48' 58" - 157.973
 SSM 149839 - SSM 166631 133° 19' 35" - 86.481

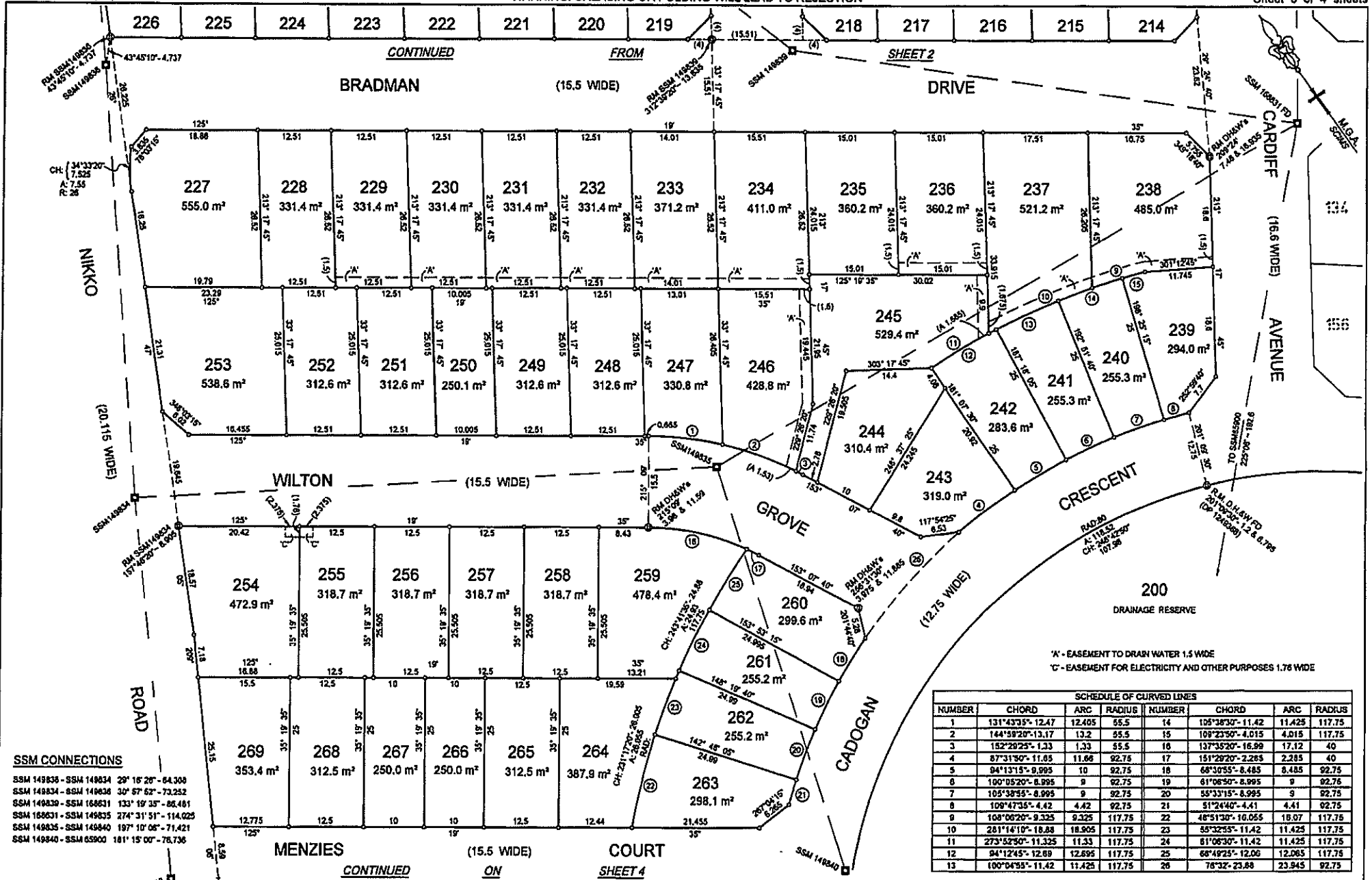
SURVEYOR: RACHEL KATHERINE BROWN
 DATE OF SURVEY: 12/12/2018
 SURVEYOR'S REF: 58385-02DP

PLAN OF SUBDIVISION OF LOT 100 DP1249368

LGA: CENTRAL COAST
 LOCALITY: WOONGARRAH
 REDUCTION RATIO 1:400
 LENGTHS ARE IN METRES.

REGISTERED

DP



SSM CONNECTIONS

- SSM 149836 - SSM 149834 29° 16' 20" - 64.300
- SSM 149834 - SSM 149836 30° 57' 52" - 73.252
- SSM 149830 - SSM 166631 133° 19' 35" - 86.481
- SSM 166631 - SSM 149835 274° 31' 51" - 114.025
- SSM 149835 - SSM 149840 197° 10' 06" - 71.421
- SSM 149840 - SSM 65900 181° 15' 00" - 76.736

SCHEDULE OF CURVED LINES							
NUMBER	CHORD	ARC	RADIUS	NUMBER	CHORD	ARC	RADIUS
1	131°43'35"-12.47	12.405	55.5	14	125°18'30"-11.42	11.425	117.75
2	144°59'20"-13.17	13.2	55.5	15	109°23'50"-4.015	4.015	117.75
3	152°28'25"-1.33	1.33	55.5	16	137°35'20"-16.99	17.12	40
4	87°31'50"-11.85	11.66	92.75	17	151°29'20"-2.285	2.285	40
5	94°13'15"-9.995	10	92.75	18	68°30'55"-8.485	8.485	92.75
6	100°05'20"-8.995	9	92.75	19	61°06'50"-8.995	9	92.75
7	105°38'55"-8.995	9	92.75	20	53°33'15"-8.995	9	92.75
8	109°47'35"-4.42	4.42	92.75	21	51°24'40"-4.41	4.41	92.75
9	109°06'20"-9.325	9.325	117.75	22	46°51'30"-10.055	10.07	117.75
10	281°14'10"-18.88	18.905	117.75	23	55°32'55"-11.42	11.425	117.75
11	273°52'50"-11.325	11.33	117.75	24	81°06'30"-11.42	11.425	117.75
12	84°12'45"-12.69	12.695	117.75	25	66°49'25"-12.06	12.065	117.75
13	100°04'55"-11.42	11.425	117.75	26	76°32'-23.68	23.945	92.75

SURVEYOR: RACHEL KATHERINE BROWN
 DATE OF SURVEY: 12/12/2018
 SURVEYOR'S REF: 58385-02DP

PLAN OF SUBDIVISION OF LOT 100 DP1249368

LGA: CENTRAL COAST
 LOCALITY: WOONGARRAH
 REDUCTION RATIO 1:400
 LENGTHS ARE IN METRES.

REGISTERED

DP