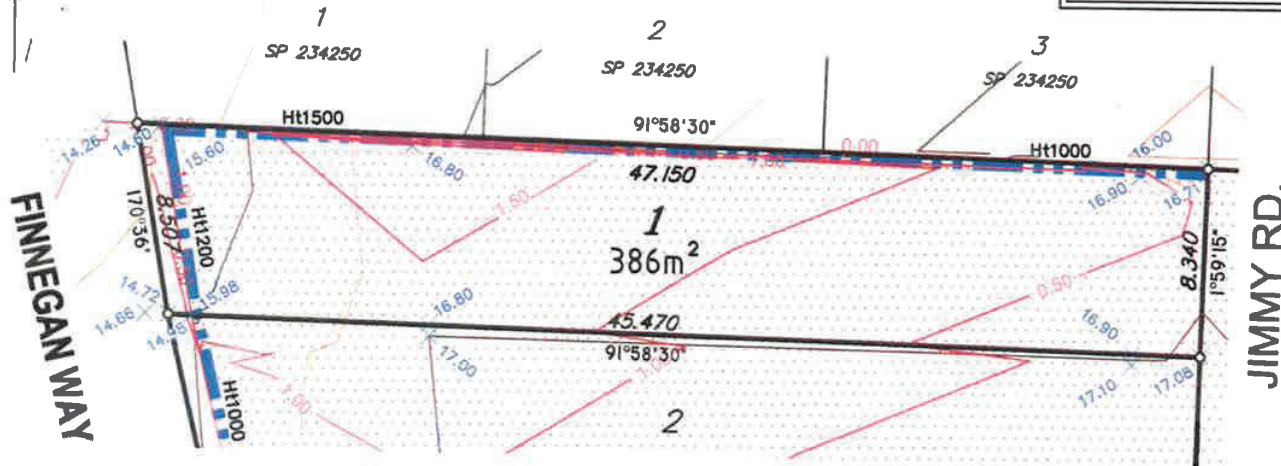
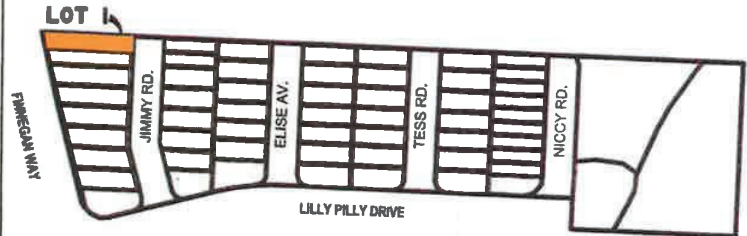


Compaction Statement

The earthworks must be carried out in accordance with AS 3798-2007 Guidelines on earthworks for commercial and residential developments.

Supervision of bulk earthworks must be to Level 1 and the frequency of field density testing must be in accordance with Table 8.1 of AS 3798-2007.

LOCALITY MAP
(Not to Scale)



FEATURE LEGEND

- 1.5 ——— Fill Depth (0.5m interval)
- 1.0 ——— Final Contours (0.5m interval)
- — — Retaining wall (Indicative position only)
- Fill
- + 75.50 Design levels
- Ht2000 Wall heights (mm)

NOTES:

1. THIS PLAN IS PREPARED FOR THE PURPOSE OF ACCOMPANYING A SALES CONTRACT AND MUST NOT BE USED FOR ANY OTHER PURPOSE.



Email: n@mail@adcojtd.com.au Web: adcojtd.com.au

Brisbane: Level 1/55 Douglas Street, Milton
Phone: (07) 3333 1965, Facsimile: (07) 3333 1596

Rockhampton: 7/87 East Street, Rockhampton
Phone: (07) 4199 6317, Facsimile: (07) 4922 8608

Gold Coast: Suite 212 Lakeside Corporate Space
Phone: (07) 5593 4099, Facsimile: (07) 5593 8066

Townsville: Level 1/25 Sturt Street, Townsville
Phone: (07) 4722 2721, Facsimile: (07) 4722 2778

Disclosure Statement

1. This plan shows details of Proposed Lot 1 and New road which cancel Lot 1 on SP 250201, situated in Coomera.
2. For all engineering design works and services locations please refer to the Consulting Engineers Drawings.

DISCLAIMER

Areas and dimensions shown hereon are subject to final survey.
Boundary corners have not yet been marked at the date of this plan.

Arnold & Arnold (Gold Coast) Pty. Ltd.
Land Surveyors and Town Planners

Signed:

Date:

30.5.2019

DISCLOSURE PLAN

PROJECT Lot 1,
#43 Finnegan Way, Coomera, Stage 1
Proposed Subdivision of Lot 1 on
SP250201 & Lot 900 on SP250193

REVISION

PROJECT No. 7040.36_DIS	SCALE 1:300@A4	SHEET 1 of 55	DATE 30/05/2019
----------------------------	-------------------	------------------	--------------------