

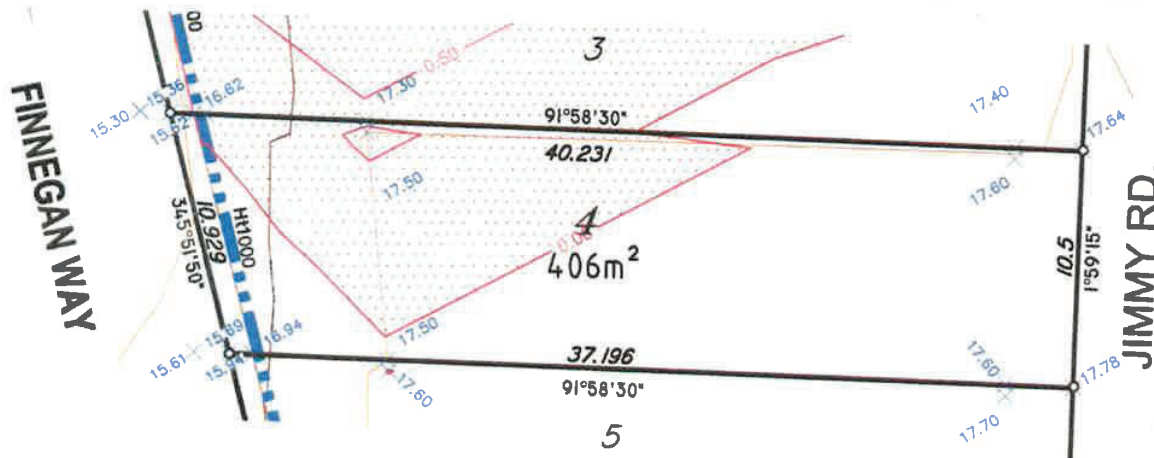
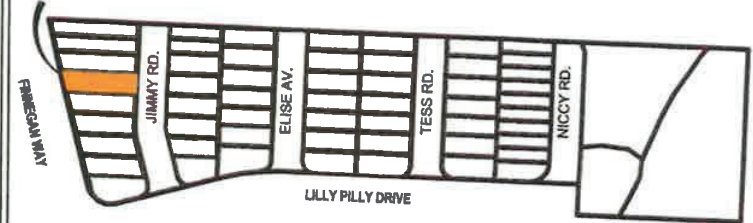
### Compaction Statement

The earthworks must be carried out in accordance with AS 3798-2007 Guidelines on earthworks for commercial and residential developments.

Supervision of bulk earthworks must be to Level 1 and the frequency of field density testing must be in accordance with Table 8.1 of AS 3798-2007.

### LOCALITY MAP (Not to Scale)

LOT 4



### FEATURE LEGEND

- 1.5 Fill Depth (0.5m Interval)
- 1.0 Final Contours (0.5m Interval)
- Retaining wall (Indicative position only)
- Fill
- Design levels
- Well heights (mm)

### NOTES:

1. THIS PLAN IS PREPARED FOR THE PURPOSE OF ACCOMPANYING A SALES CONTRACT AND MUST NOT BE USED FOR ANY OTHER PURPOSE.



Email: 'mail@adcoqld.com.au' Web: adcoqld.com.au

Brisbane: Level 1/55 Douglas Street, Milton  
Phone: (07) 3333 1985, Facsimile: (07) 3333 1986

Rockhampton: 7/67 East Street, Rockhampton  
Phone: (07) 4199 6317, Facsimile: (07) 4922 6908

Gold Coast: Suite 212 Lakeside Corporate Space  
Phone: (07) 5593 4099, Facsimile: (07) 5593 6006

Townsville: Level 1/25 Sturt Street, Townsville  
Phone: (07) 4722 2721, Facsimile: (07) 4722 2778

### Disclosure Statement

1. This plan shows details of Proposed Lot 4 and New road which cancel Lot 1 on SP 250201, situated in Coomera.
2. For all engineering design works and services locations please refer to the Consulting Engineers Drawings.

### DISCLAIMER

Areas and dimensions shown hereon are subject to final survey.  
Boundary corners have not yet been marked at the date of this plan.

Arnold & Arnold (Gold Coast) Pty. Ltd.  
Land Surveyors and Town Planners

Signed:

Date:

30.5.2019

### DISCLOSURE PLAN

PROJECT Lot 4,  
#43 Finnegan Way, Coomera, Stage 1  
Proposed Subdivision of Lot 1 on  
SP250201 & Lot 900 on SP250193

REVISION

PROJECT No. 7040.36_DIS	SCALE 1:300@A4	SHEET 4 of 55	DATE 30/05/2019
----------------------------	-------------------	------------------	--------------------