



Package Price:
\$662,700

Austral

Aspect Estate

Lot: 264

Land Register: Jul / Aug 2020

4 🛏️ 2 🚿 1 🚗

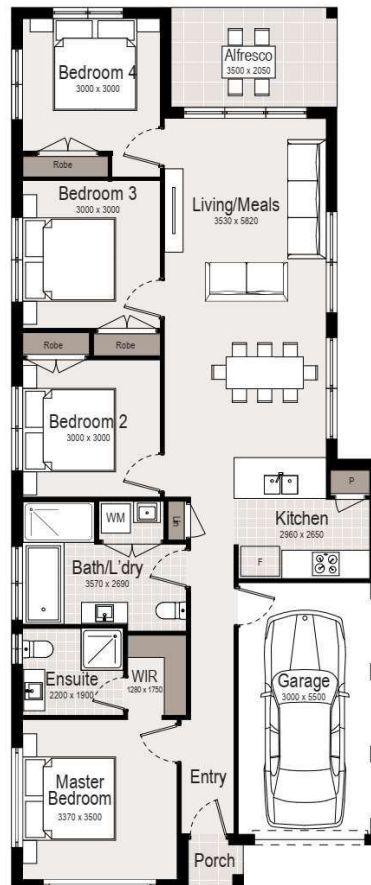
Land: 300 m²

House: 138.2 m²

Land Price: \$ 399,900

YOUR NEW HOME INCLUDES:

- Fixed price contract
- 2700mm ground floor ceiling height, 2500mm first floor ceiling
- Premium brickworks & cladding
- Quality tiles and carpet throughout
- Colorbond fencing & roof
- 20mm stone benchtop to kitchen with soft close drawers & doors
- Niches to bathroom and ensuite shower
- 600mm stainless steel cooktop, oven and rangehood
- 2-Zone ducted air conditioning
- Full LED downlights throughout the home
- Double powerpoints to each room
- Mailbox, flyscreen and clothing line included
- Full turnkey package: coloured concrete driveway and soft landscaping included



*Whilst reasonable effort has been made to ensure accuracy, photographs and artist's impressions of surrounding area and the interiors and exteriors are intended as a guide only and subject to change. Styling is indicative only and not provided. Price is correct at time of printing though is subject to change without notice. Total square meters and square size measurement of this house is calculated by measuring from the external side and external walls. Prospective purchasers should make their own enquiries.

GROUND FLOOR PLAN