



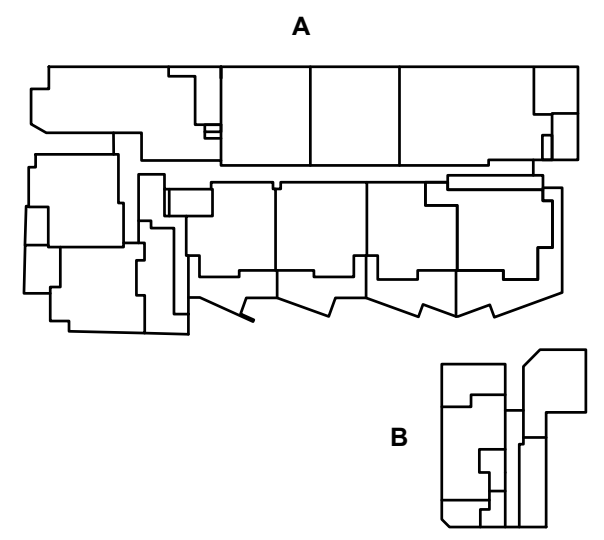
EVOCA

CAMPSIE

GROUND LEVEL

CANTERBURY ROAD

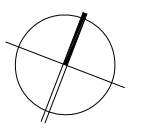
CHELMSFORD AVENUE



LEGEND

- 1 BEDROOM APARTMENT
- 2 BEDROOM APARTMENT
- 3 BEDROOM APARTMENT

**Disclaimer:** Final areas are subject to design changes, local authority approvals and the terms of the Contract of Sale. Final areas may differ to those shown on this plan. The Seller is (under the contract terms) entitled to make variations to the lot/apartment including its location, area, size, dimensions and elevation. Refer to the contract terms for permitted variations. Any furniture shown is for illustrative purposes only and is not intended to form part of the sale.

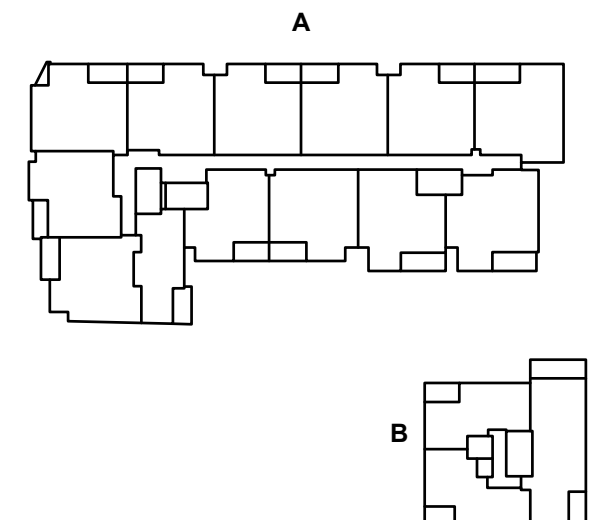







# EVOCA

CAMPSIE

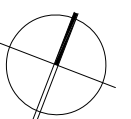
LEVEL 2



### LEGEND

-  1 BEDROOM APARTMENT
-  2 BEDROOM APARTMENT
-  3 BEDROOM APARTMENT

**Disclaimer:** Final areas are subject to design changes, local authority approvals and the terms of the Contract of Sale. Final areas may differ to those shown on this plan. The Seller is (under the contract terms) entitled to make variations to the lot/apartment including its location, area, size, dimensions and elevation. Refer to the contract terms for permitted variations. Any furniture shown is for illustrative purposes only and is not intended to form part of the sale.

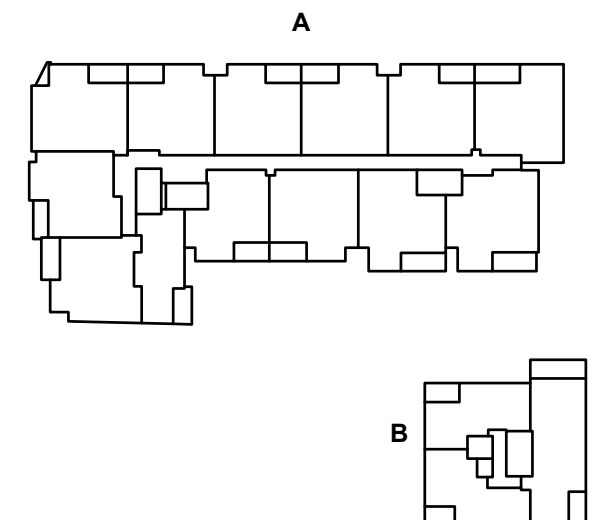
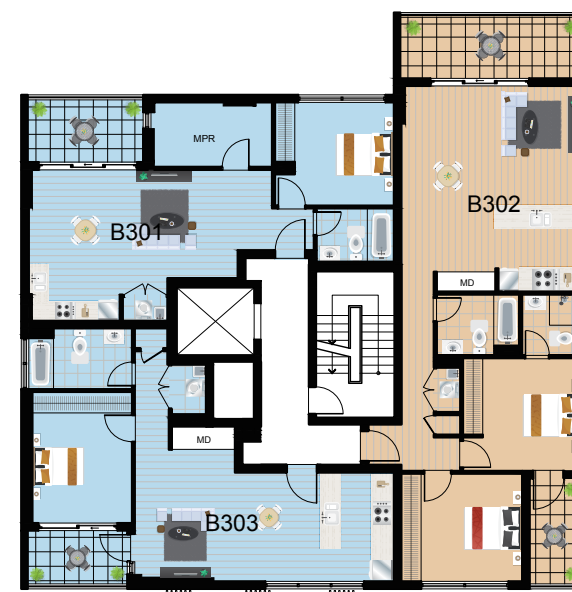







# EVOCA

CAMPSIE

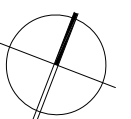
LEVEL 3



### LEGEND

-  1 BEDROOM APARTMENT
-  2 BEDROOM APARTMENT
-  3 BEDROOM APARTMENT

**Disclaimer:** Final areas are subject to design changes, local authority approvals and the terms of the Contract of Sale. Final areas may differ to those shown on this plan. The Seller is (under the contract terms) entitled to make variations to the lot/apartment including its location, area, size, dimensions and elevation. Refer to the contract terms for permitted variations. Any furniture shown is for illustrative purposes only and is not intended to form part of the sale.

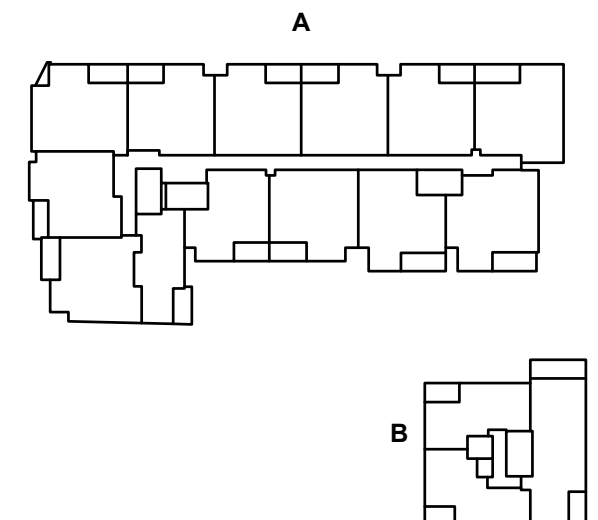
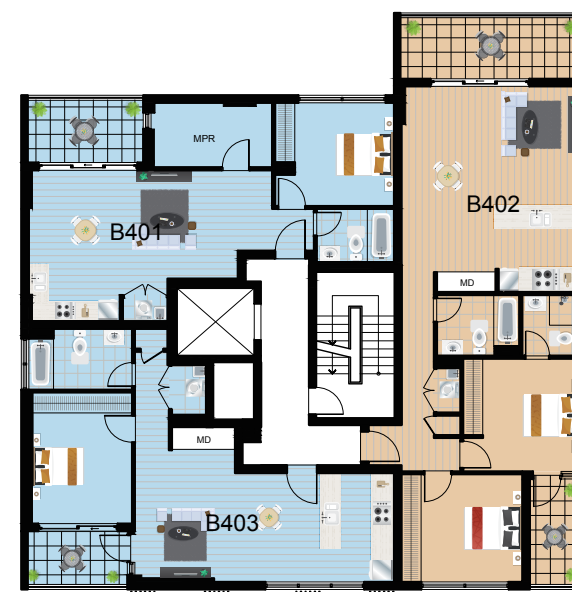







# EVOCA

CAMPSIE

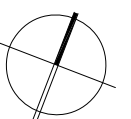
LEVEL 4



### LEGEND

-  1 BEDROOM APARTMENT
-  2 BEDROOM APARTMENT
-  3 BEDROOM APARTMENT

**Disclaimer:** Final areas are subject to design changes, local authority approvals and the terms of the Contract of Sale. Final areas may differ to those shown on this plan. The Seller is (under the contract terms) entitled to make variations to the lot/apartment including its location, area, size, dimensions and elevation. Refer to the contract terms for permitted variations. Any furniture shown is for illustrative purposes only and is not intended to form part of the sale.

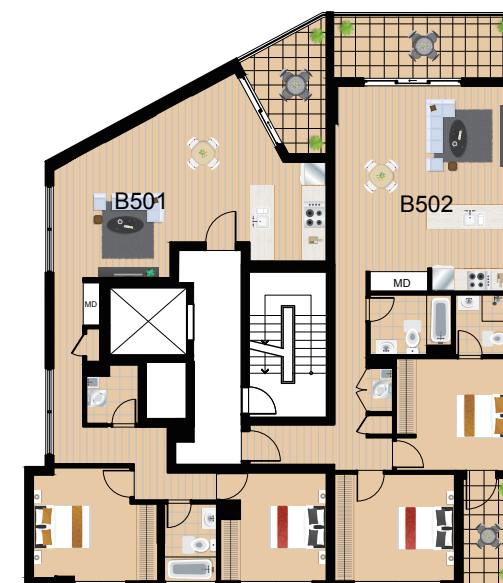
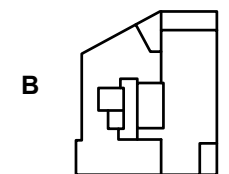
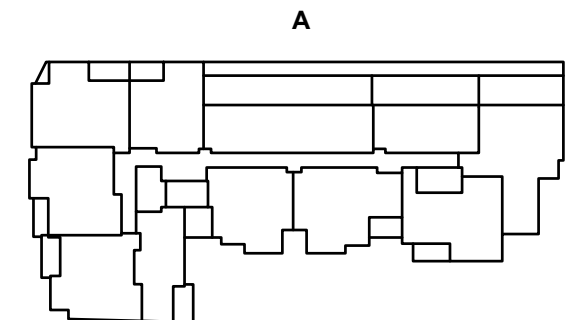







# EVOCA

CAMPSIE

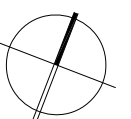
LEVEL 5



### LEGEND

-  1 BEDROOM APARTMENT
-  2 BEDROOM APARTMENT
-  3 BEDROOM APARTMENT

**Disclaimer:** Final areas are subject to design changes, local authority approvals and the terms of the Contract of Sale. Final areas may differ to those shown on this plan. The Seller is (under the contract terms) entitled to make variations to the lot/apartment including its location, area, size, dimensions and elevation. Refer to the contract terms for permitted variations. Any furniture shown is for illustrative purposes only and is not intended to form part of the sale.

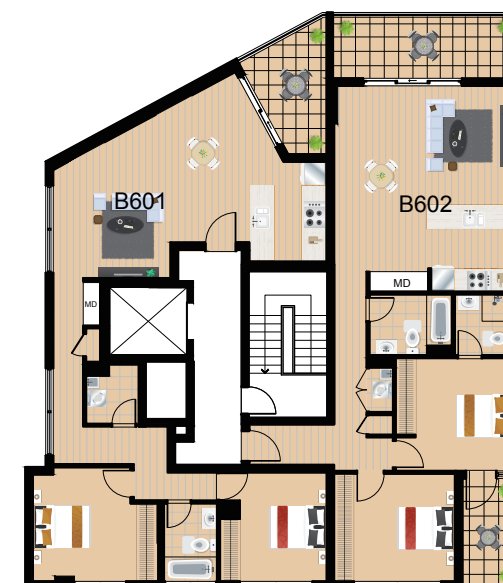
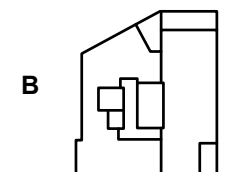
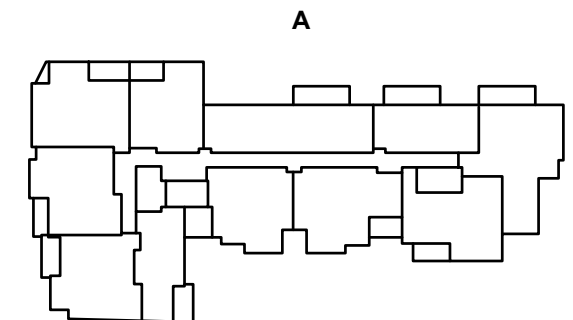







# EVOCA

CAMPSIE

LEVEL 6



### LEGEND

-  1 BEDROOM APARTMENT
-  2 BEDROOM APARTMENT
-  3 BEDROOM APARTMENT

**Disclaimer:** Final areas are subject to design changes, local authority approvals and the terms of the Contract of Sale. Final areas may differ to those shown on this plan. The Seller is (under the contract terms) entitled to make variations to the lot/apartment including its location, area, size, dimensions and elevation. Refer to the contract terms for permitted variations. Any furniture shown is for illustrative purposes only and is not intended to form part of the sale.

