



KEILOR 190 (3+2) – URBAN FACADE

FAÇADE IS FOR ILLUSTRATION PURPOSES ONLY. FACE BRICK ONLY TO THE FRONT FAÇADE – RENDER NOT INCLUDED

 3+2
  2+1
  1+1
  1+1

LOT 21 CRONIN STREET,
MORAYFIELD HEIGHTS

Land Size	401 m ²
Land Price	\$214,000
Registration	Registered
House Size	189.44 m ²
House Price	\$285,985

TOTAL FIXED TURNKEY PRICE:

\$499,985

Price Valid Until: 28/01/20

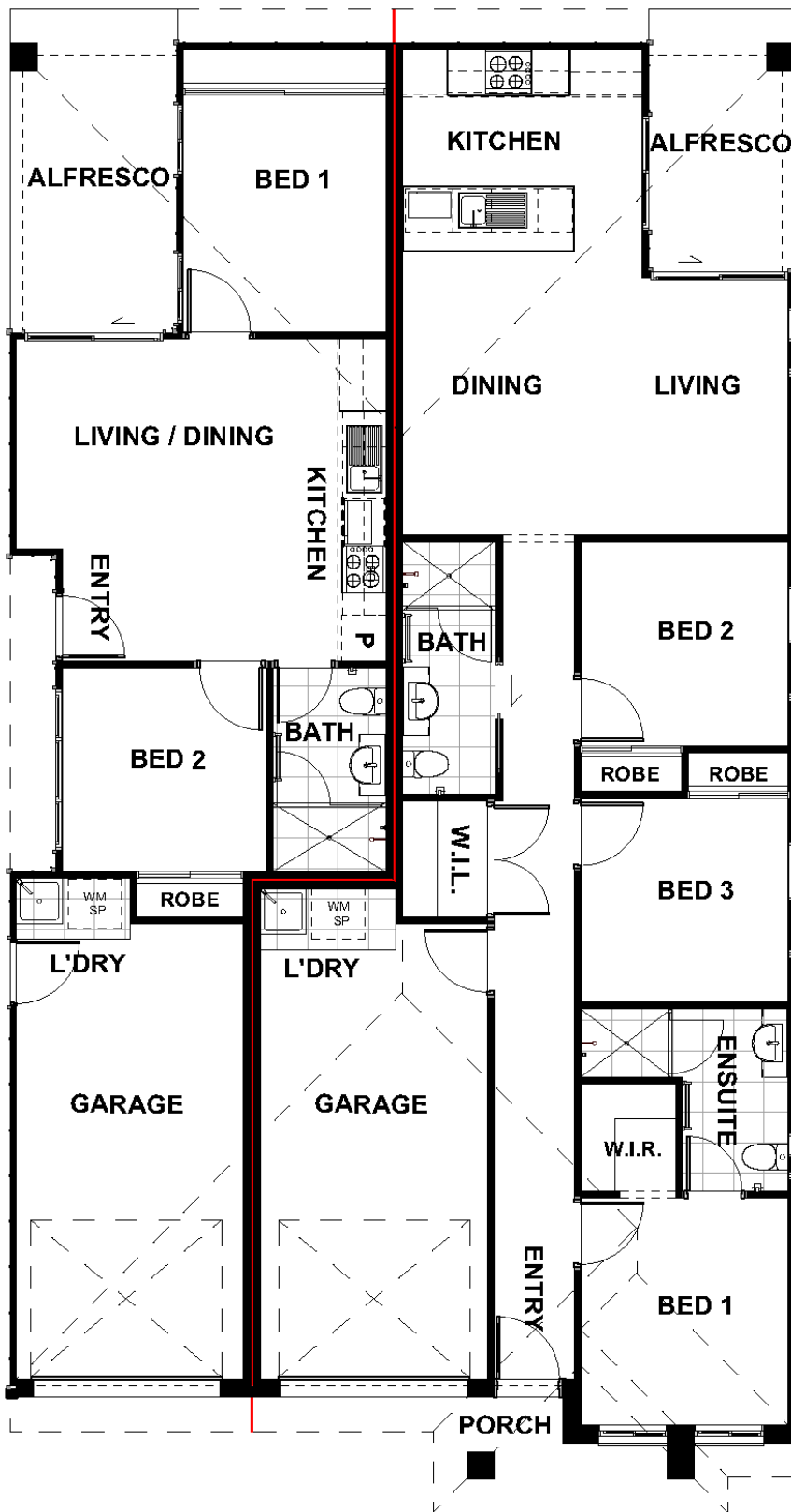
PACKAGE HIGHLIGHTS

- ✓ Full Turnkey, Fixed Price, Silkwood Gold Inclusions
- ✓ **Face brick to front façade with lightweight cladding to sides & rear**
- ✓ Exposed aggregate driveway & turfing to entire lot
- ✓ Full timber paling fencing and landscaping package
- ✓ Three coat Dulux premium paint system
- ✓ Quality floor coverings - carpet & tiles throughout
- ✓ Superior LED lighting package throughout entire house (excl. garage)
- ✓ Designer kitchen with Westinghouse stainless steel cooktop, oven & range hood
- ✓ Overhead cupboards & stainless-steel dishwasher
- ✓ 3 x split system air conditioners
- ✓ Ceramic tiled splashbacks to kitchens & laundries
- ✓ 20mm stone benchtops to kitchens and bathrooms
- ✓ Developer and covenant approval
- ✓ Building approval and water application fees included
- ✓ Colorbond roof & barrier screens to windows & doors
- ✓ Ceiling fans in every bedroom, living area & alfresco
- ✓ Approved Fire Separation wall between Dwelling A & B
- ✓ 20 Year Structural Guarantee

28/11/19 GOLD PR911

Terms, conditions, fees and government charges may apply. The illustrations provided are artist impressions only and may include alternative finishes and features to those supplied by Silkwood Homes such as landscaping and fencing. All images and floor plans remain in the property of Silkwood Homes and are protected by Copyright. Land and prices are subject to availability and can change without notice. Silkwood Homes reserves the right to amend specifications and prices without notice. Silkwood Homes QLD ABN: 65 149 767 966 QBCC: 1218048 | Silkwood Homes NSW ABN: 14 156 406 352 NSW Licence 248052C

KEILOR 190 (3+2)



Dwelling A:

Living	83.01 m ²
Garage	20.78 m ²
Porch	2.50 m ²
Alfresco	5.79 m ²
Total	112.08 m²

Dwelling B:

Living	44.90 m ²
Garage	21.16 m ²
Porch	2.36 m ²
Alfresco	8.94 m ²
Total	77.36 m²
Grand Total	189.44 m²