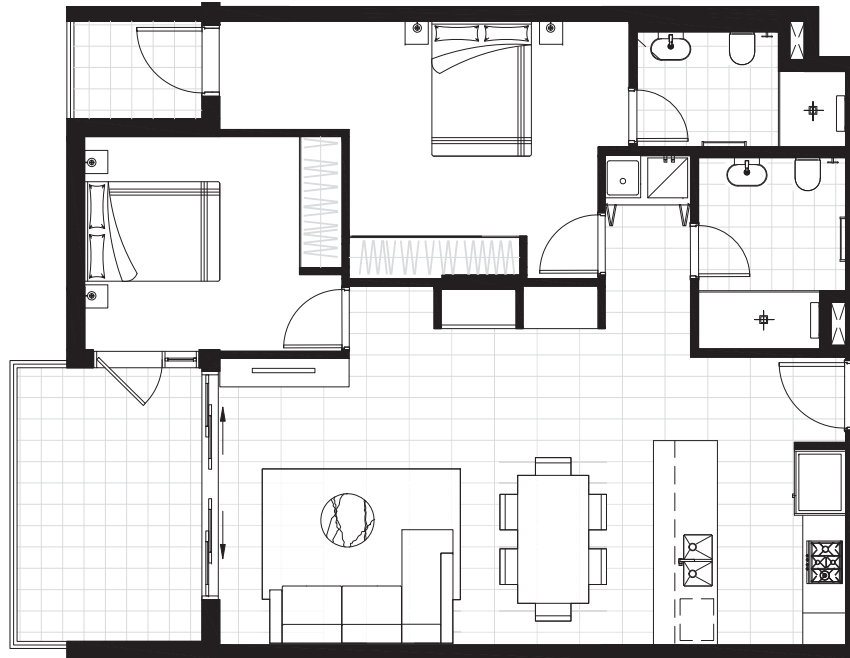




# THE COLLETT

## Apartment 202



**LEVEL**  
Second Floor

**TOTAL**  
93m<sup>2</sup>

**PLUS**  
Storage + Car Space



[THECOLLETT.COM.AU](http://THECOLLETT.COM.AU)

DISCLAIMER: Please note that this floor plan was produced prior to construction and is subject to council approval. The information herein is believed to be correct but is not guaranteed. Changes may be made during construction and dimensions, areas, fittings and specifications are subject to change without notice in accordance with the provisions of the contract of sale. The furniture and furnishings depicted are not included with any sale and purchasers must refer to the contract for sale for the list of inclusions. The position of furniture and furnishings should not be taken to be indicative of final positions of power points, TV connection points and the like. Prospective purchasers must rely on their own enquiries. All graphics including tile layout, joinery layout, basins, kitchen equipment, balustrades and the like are indicative only. Bulkheads for services are not depicted. Floor plan is at an unspecified scale. All area sizes indicated are approximate only and are subject to final survey.

**conquest™**

# THE COLLETT

## Schedule of Fixtures, Fittings & Finishes

### BATHROOMS

<b>Basin</b>	Basin in ceramic white on Stone
<b>Basin mixer</b>	Basin mixer in black
<b>Hand towel</b>	Hand towel in black
<b>Mirror</b>	Mirrored cabinet
<b>Shower rail</b>	Wall mounted shower rail arm in black and shower head
<b>Shower screen</b>	Glass shower screen in clear glass (where applicable)
<b>Toilet</b>	Wall faced toilet suite with in wall cistern, toilet cistern flush plate and soft close seat - ceramic white and black flush plate
<b>Toilet roll holder</b>	Toilet roll holder in black
<b>Towel rail</b>	Towel rail in black
<b>Wall tile</b>	Porcelain subway tile in premium white, satin finish

### GENERAL

<b>Air conditioning</b>	ducted air conditioning
<b>Wardrobes</b>	Built in mirrored wardrobes
<b>Blinds</b>	Roller blinds
<b>Intercom</b>	Security Intercom
<b>Lighting</b>	LED downlights and feature balcony light
<b>External door &amp; window glazing</b>	Aluminium frame

### FLOORS

<b>Balcony</b>	Porcelain tile in basalt finish, charcoal
<b>Bathrooms</b>	Bluestone look full body porcelain tile
<b>Bedrooms</b>	<ul style="list-style-type: none"><li>Plush cut pile carpet</li></ul>
<b>Kitchen</b>	Pietra tile with marble look
<b>Laundry</b>	Pietra tile with marble look
<b>Living</b>	Pietra tile with marble look

### KITCHEN

<b>Benchtop</b>	<ul style="list-style-type: none"><li>Light Scheme:<ul style="list-style-type: none"><li>- Calacatta Stone</li></ul></li><li>Dark Scheme<ul style="list-style-type: none"><li>- Black Snow Stone</li></ul></li></ul>
<b>Cooktop</b>	Miele 4 burner gas cooktop in stainless steel
<b>Dishwasher</b>	Miele Dishwasher in stainless steel
<b>Joinery finish</b>	Poly joinery Natural White, with soft close doors & hinges
<b>Oven</b>	Miele built-in oven in stainless steel
<b>Rangehood</b>	Miele built-in rangehood, in stainless steel
<b>Sink</b>	Undermount sink in stainless steel
<b>Sink mixer tap</b>	Sink mixer tap in black
<b>Splashback</b>	Mirrored Smokey Grey

### LAUNDRY

<b>Sink</b>	Stainless steel laundry tub + cabinet
<b>Sink mixer tap</b>	Sink mixer tap in chrome silver
<b>Wall tile</b>	Porcelain tile in premium white, satin finish

**conquest**<sup>™</sup>