



Level 01

- |                   |                   |                 |
|-------------------|-------------------|-----------------|
| 1 Bed Suite       | 2 Bedroom         | 3 Bedroom       |
| 1 Bedroom + Study | 2 Bedroom + Study | Penthouse       |
| 1 Bedroom + Flexi | 2 Bedroom + Flexi | Super Penthouse |

Disclaimer: The information and illustrations in this document are indicative only and are subject to change. Crown W1 Pty Limited, Sathio Investments Pty Limited, Crown Cornerstone Investments Pty Limited and Crown W1 Developments Pty Limited and their related entities or corporations (including the landowner) and their agents do not warrant the accuracy of and do not accept any liability for any error or discrepancy in the information and illustrations. Any furniture depicted is illustrative only and will not form part of the property sold. The displayed information and illustrations do not form part of any contract for sale, and interested parties must rely on their own enquiries and the information in the contract for sale.



- |                   |                   |                 |
|-------------------|-------------------|-----------------|
| 1 Bed Suite       | 2 Bedroom         | 3 Bedroom       |
| 1 Bedroom + Study | 2 Bedroom + Study | Penthouse       |
| 1 Bedroom + Flexi | 2 Bedroom + Flexi | Super Penthouse |



Disclaimer: The information and illustrations in this document are indicative only and are subject to change. Crown W1 Pty Limited, Sathio Investments Pty Limited, Crown Cornerstone Investments Pty Limited and Crown W1 Developments Pty Limited and their related entities or corporations (including the landowner) and their agents do not warrant the accuracy of and do not accept any liability for any error or discrepancy in the information and illustrations. Any furniture depicted is illustrative only and will not form part of the property sold. The displayed information and illustrations do not form part of any contract for sale, and interested parties must rely on their own enquiries and the information in the contract for sale.



Level 03

- |                   |                   |                 |
|-------------------|-------------------|-----------------|
| 1 Bed Suite       | 2 Bedroom         | 3 Bedroom       |
| 1 Bedroom + Study | 2 Bedroom + Study | Penthouse       |
| 1 Bedroom + Flexi | 2 Bedroom + Flexi | Super Penthouse |



Disclaimer: The information and illustrations in this document are indicative only and are subject to change. Crown W1 Pty Limited, Sathio Investments Pty Limited, Crown Cornerstone Investments Pty Limited and Crown W1 Developments Pty Limited and their related entities or corporations (including the landowner) and their agents do not warrant the accuracy of and do not accept any liability for any error or discrepancy in the information and illustrations. Any furniture depicted is illustrative only and will not form part of the property sold. The displayed information and illustrations do not form part of any contract for sale, and interested parties must rely on their own enquiries and the information in the contract for sale.





# Level 05

- |                   |                   |                 |
|-------------------|-------------------|-----------------|
| 1 Bed Suite       | 2 Bedroom         | 3 Bedroom       |
| 1 Bedroom + Study | 2 Bedroom + Study | Penthouse       |
| 1 Bedroom + Flexi | 2 Bedroom + Flexi | Super Penthouse |



Disclaimer: The information and illustrations in this document are indicative only and are subject to change. Crown W1 Pty Limited, Sathio Investments Pty Limited, Crown Cornerstone Investments Pty Limited and Crown W1 Developments Pty Limited and their related entities or corporations (including the landowner) and their agents do not warrant the accuracy of and do not accept any liability for any error or discrepancy in the information and illustrations. Any furniture depicted is illustrative only and will not form part of the property sold. The displayed information and illustrations do not form part of any contract for sale, and interested parties must rely on their own enquiries and the information in the contract for sale.



Level 06

- |                   |                   |                 |
|-------------------|-------------------|-----------------|
| 1 Bed Suite       | 2 Bedroom         | 3 Bedroom       |
| 1 Bedroom + Study | 2 Bedroom + Study | Penthouse       |
| 1 Bedroom + Flexi | 2 Bedroom + Flexi | Super Penthouse |



Disclaimer: The information and illustrations in this document are indicative only and are subject to change. Crown W1 Pty Limited, Sathio Investments Pty Limited, Crown Cornerstone Investments Pty Limited and Crown W1 Developments Pty Limited and their related entities or corporations (including the landowner) and their agents do not warrant the accuracy of and do not accept any liability for any error or discrepancy in the information and illustrations. Any furniture depicted is illustrative only and will not form part of the property sold. The displayed information and illustrations do not form part of any contract for sale, and interested parties must rely on their own enquiries and the information in the contract for sale.



Level 07

- |                   |                   |                 |
|-------------------|-------------------|-----------------|
| 1 Bed Suite       | 2 Bedroom         | 3 Bedroom       |
| 1 Bedroom + Study | 2 Bedroom + Study | Penthouse       |
| 1 Bedroom + Flexi | 2 Bedroom + Flexi | Super Penthouse |



Disclaimer: The information and illustrations in this document are indicative only and are subject to change. Crown W1 Pty Limited, Sathio Investments Pty Limited, Crown Cornerstone Investments Pty Limited and Crown W1 Developments Pty Limited and their related entities or corporations (including the landowner) and their agents do not warrant the accuracy of and do not accept any liability for any error or discrepancy in the information and illustrations. Any furniture depicted is illustrative only and will not form part of the property sold. The displayed information and illustrations do not form part of any contract for sale, and interested parties must rely on their own enquiries and the information in the contract for sale.



## Level 08

 1 Bed Suite	 2 Bedroom	 3 Bedroom
 1 Bedroom + Study	 2 Bedroom + Study	 Penthouse
 1 Bedroom + Flexi	 2 Bedroom + Flexi	 Super Penthouse



Disclaimer: The information and illustrations in this document are indicative only and are subject to change. Crown W1 Pty Limited, Sathio Investments Pty Limited, Crown Cornerstone Investments Pty Limited and Crown W1 Developments Pty Limited and their related entities or corporations (including the landowner) and their agents do not warrant the accuracy of and do not accept any liability for any error or discrepancy in the information and illustrations. Any furniture depicted is illustrative only and will not form part of the property sold. The displayed information and illustrations do not form part of any contract for sale, and interested parties must rely on their own enquiries and the information in the contract for sale.





## Level 09

- |                   |                   |                 |
|-------------------|-------------------|-----------------|
| 1 Bed Suite       | 2 Bedroom         | 3 Bedroom       |
| 1 Bedroom + Study | 2 Bedroom + Study | Penthouse       |
| 1 Bedroom + Flexi | 2 Bedroom + Flexi | Super Penthouse |



Disclaimer: The information and illustrations in this document are indicative only and are subject to change. Crown W1 Pty Limited, Sathio Investments Pty Limited, Crown Cornerstone Investments Pty Limited and Crown W1 Developments Pty Limited and their related entities or corporations (including the landowner) and their agents do not warrant the accuracy of and do not accept any liability for any error or discrepancy in the information and illustrations. Any furniture depicted is illustrative only and will not form part of the property sold. The displayed information and illustrations do not form part of any contract for sale, and interested parties must rely on their own enquiries and the information in the contract for sale.





Level 10

- |   |   |   |
|---|---|---|
|  1 Bed Suite       |  2 Bedroom         |  3 Bedroom       |
|  1 Bedroom + Study |  2 Bedroom + Study |  Penthouse       |
|  1 Bedroom + Flexi |  2 Bedroom + Flexi |  Super Penthouse |



Disclaimer: The information and illustrations in this document are indicative only and are subject to change. Crown W1 Pty Limited, Sathio Investments Pty Limited, Crown Cornerstone Investments Pty Limited and Crown W1 Developments Pty Limited and their related entities or corporations (including the landowner) and their agents do not warrant the accuracy of and do not accept any liability for any error or discrepancy in the information and illustrations. Any furniture depicted is illustrative only and will not form part of the property sold. The displayed information and illustrations do not form part of any contract for sale, and interested parties must rely on their own enquiries and the information in the contract for sale.



Level 11

- |                   |                   |                 |
|-------------------|-------------------|-----------------|
| 1 Bed Suite       | 2 Bedroom         | 3 Bedroom       |
| 1 Bedroom + Study | 2 Bedroom + Study | Penthouse       |
| 1 Bedroom + Flexi | 2 Bedroom + Flexi | Super Penthouse |



Disclaimer: The information and illustrations in this document are indicative only and are subject to change. Crown W1 Pty Limited, Sathio Investments Pty Limited, Crown Cornerstone Investments Pty Limited and Crown W1 Developments Pty Limited and their related entities or corporations (including the landowner) and their agents do not warrant the accuracy of and do not accept any liability for any error or discrepancy in the information and illustrations. Any furniture depicted is illustrative only and will not form part of the property sold. The displayed information and illustrations do not form part of any contract for sale, and interested parties must rely on their own enquiries and the information in the contract for sale.



Level 12

- |   |   |   |
|---|---|---|
|  1 Bed Suite       |  2 Bedroom         |  3 Bedroom       |
|  1 Bedroom + Study |  2 Bedroom + Study |  Penthouse       |
|  1 Bedroom + Flexi |  2 Bedroom + Flexi |  Super Penthouse |



Disclaimer: The information and illustrations in this document are indicative only and are subject to change. Crown W1 Pty Limited, Sathio Investments Pty Limited, Crown Cornerstone Investments Pty Limited and Crown W1 Developments Pty Limited and their related entities or corporations (including the landowner) and their agents do not warrant the accuracy of and do not accept any liability for any error or discrepancy in the information and illustrations. Any furniture depicted is illustrative only and will not form part of the property sold. The displayed information and illustrations do not form part of any contract for sale, and interested parties must rely on their own enquiries and the information in the contract for sale.



Level 13

- |   |   |   |
|---|---|---|
|  1 Bed Suite       |  2 Bedroom         |  3 Bedroom       |
|  1 Bedroom + Study |  2 Bedroom + Study |  Penthouse       |
|  1 Bedroom + Flexi |  2 Bedroom + Flexi |  Super Penthouse |



Disclaimer: The information and illustrations in this document are indicative only and are subject to change. Crown W1 Pty Limited, Sathio Investments Pty Limited, Crown Cornerstone Investments Pty Limited and Crown W1 Developments Pty Limited and their related entities or corporations (including the landowner) and their agents do not warrant the accuracy of and do not accept any liability for any error or discrepancy in the information and illustrations. Any furniture depicted is illustrative only and will not form part of the property sold. The displayed information and illustrations do not form part of any contract for sale, and interested parties must rely on their own enquiries and the information in the contract for sale.





Level 15

- |                   |                   |                 |
|-------------------|-------------------|-----------------|
| 1 Bed Suite       | 2 Bedroom         | 3 Bedroom       |
| 1 Bedroom + Study | 2 Bedroom + Study | Penthouse       |
| 1 Bedroom + Flexi | 2 Bedroom + Flexi | Super Penthouse |



Disclaimer: The information and illustrations in this document are indicative only and are subject to change. Crown W1 Pty Limited, Sathio Investments Pty Limited, Crown Cornerstone Investments Pty Limited and Crown W1 Developments Pty Limited and their related entities or corporations (including the landowner) and their agents do not warrant the accuracy of and do not accept any liability for any error or discrepancy in the information and illustrations. Any furniture depicted is illustrative only and will not form part of the property sold. The displayed information and illustrations do not form part of any contract for sale, and interested parties must rely on their own enquiries and the information in the contract for sale.



Level 16

- |                   |                   |                 |
|-------------------|-------------------|-----------------|
| 1 Bed Suite       | 2 Bedroom         | 3 Bedroom       |
| 1 Bedroom + Study | 2 Bedroom + Study | Penthouse       |
| 1 Bedroom + Flexi | 2 Bedroom + Flexi | Super Penthouse |



Disclaimer: The information and illustrations in this document are indicative only and are subject to change. Crown W1 Pty Limited, Sathio Investments Pty Limited, Crown Cornerstone Investments Pty Limited and Crown W1 Developments Pty Limited and their related entities or corporations (including the landowner) and their agents do not warrant the accuracy of and do not accept any liability for any error or discrepancy in the information and illustrations. Any furniture depicted is illustrative only and will not form part of the property sold. The displayed information and illustrations do not form part of any contract for sale, and interested parties must rely on their own enquiries and the information in the contract for sale.



Level 17

- |                   |                   |                 |
|-------------------|-------------------|-----------------|
| 1 Bed Suite       | 2 Bedroom         | 3 Bedroom       |
| 1 Bedroom + Study | 2 Bedroom + Study | Penthouse       |
| 1 Bedroom + Flexi | 2 Bedroom + Flexi | Super Penthouse |



Disclaimer: The information and illustrations in this document are indicative only and are subject to change. Crown W1 Pty Limited, Sathio Investments Pty Limited, Crown Cornerstone Investments Pty Limited and Crown W1 Developments Pty Limited and their related entities or corporations (including the landowner) and their agents do not warrant the accuracy of and do not accept any liability for any error or discrepancy in the information and illustrations. Any furniture depicted is illustrative only and will not form part of the property sold. The displayed information and illustrations do not form part of any contract for sale, and interested parties must rely on their own enquiries and the information in the contract for sale.



Level 18

- |                   |                   |                 |
|-------------------|-------------------|-----------------|
| 1 Bed Suite       | 2 Bedroom         | 3 Bedroom       |
| 1 Bedroom + Study | 2 Bedroom + Study | Penthouse       |
| 1 Bedroom + Flexi | 2 Bedroom + Flexi | Super Penthouse |



Disclaimer: The information and illustrations in this document are indicative only and are subject to change. Crown W1 Pty Limited, Sathio Investments Pty Limited, Crown Cornerstone Investments Pty Limited and Crown W1 Developments Pty Limited and their related entities or corporations (including the landowner) and their agents do not warrant the accuracy of and do not accept any liability for any error or discrepancy in the information and illustrations. Any furniture depicted is illustrative only and will not form part of the property sold. The displayed information and illustrations do not form part of any contract for sale, and interested parties must rely on their own enquiries and the information in the contract for sale.





Level 19

- |                   |                   |                 |
|-------------------|-------------------|-----------------|
| 1 Bed Suite       | 2 Bedroom         | 3 Bedroom       |
| 1 Bedroom + Study | 2 Bedroom + Study | Penthouse       |
| 1 Bedroom + Flexi | 2 Bedroom + Flexi | Super Penthouse |



Disclaimer: The information and illustrations in this document are indicative only and are subject to change. Crown W1 Pty Limited, Sathio Investments Pty Limited, Crown Cornerstone Investments Pty Limited and Crown W1 Developments Pty Limited and their related entities or corporations (including the landowner) and their agents do not warrant the accuracy of and do not accept any liability for any error or discrepancy in the information and illustrations. Any furniture depicted is illustrative only and will not form part of the property sold. The displayed information and illustrations do not form part of any contract for sale, and interested parties must rely on their own enquiries and the information in the contract for sale.



	1 Bed Suite		2 Bedroom		3 Bedroom
	1 Bedroom + Study		2 Bedroom + Study		Penthouse
	1 Bedroom + Flexi		2 Bedroom + Flexi		Super Penthouse



Disclaimer: The information and illustrations in this document are indicative only and are subject to change. Crown W1 Pty Limited, Sathio Investments Pty Limited, Crown Cornerstone Investments Pty Limited and Crown W1 Developments Pty Limited and their related entities or corporations (including the landowner) and their agents do not warrant the accuracy of and do not accept any liability for any error or discrepancy in the information and illustrations. Any furniture depicted is illustrative only and will not form part of the property sold. The displayed information and illustrations do not form part of any contract for sale, and interested parties must rely on their own enquiries and the information in the contract for sale.

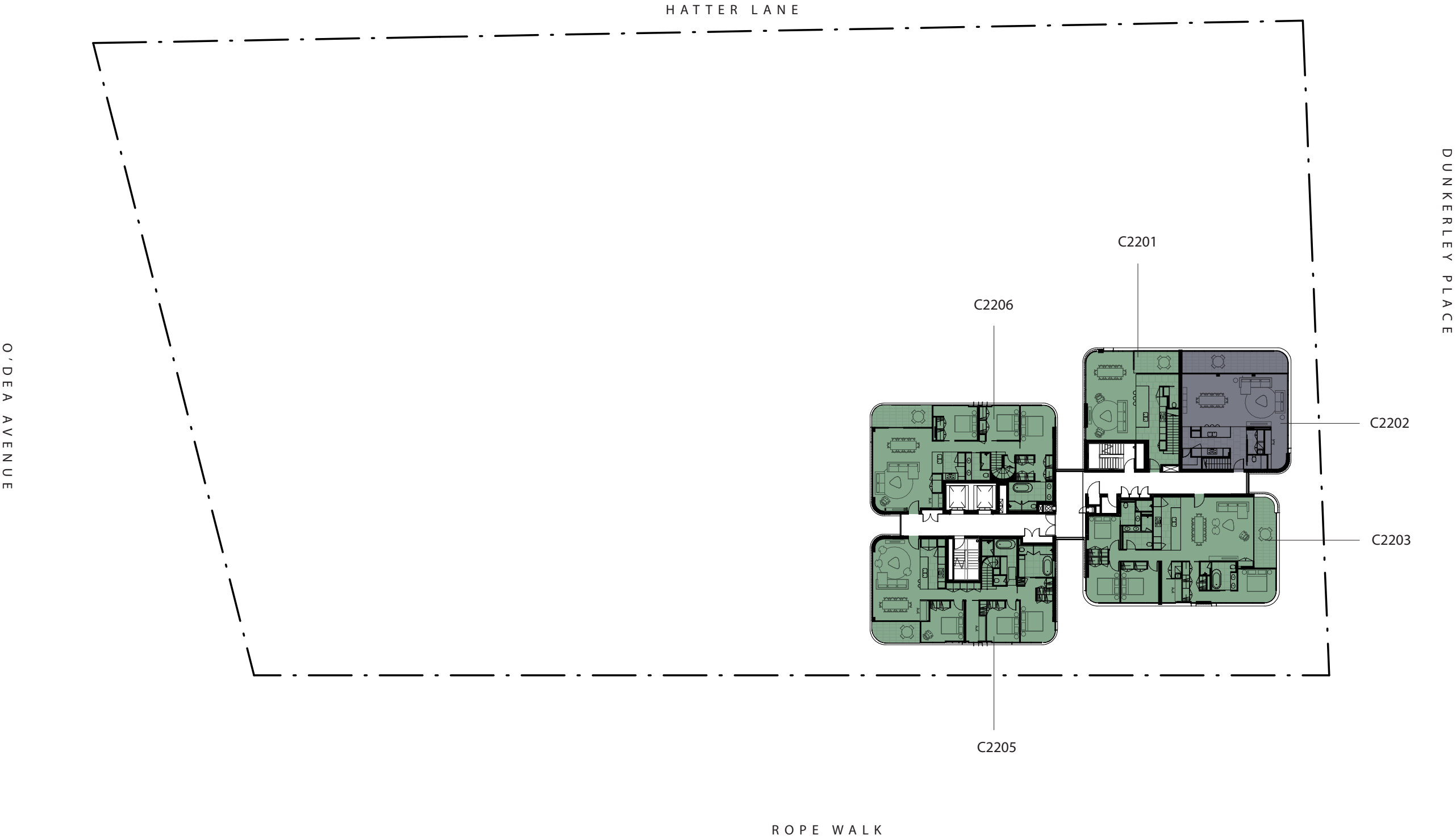


Level 21

- |                   |                   |                 |
|-------------------|-------------------|-----------------|
| 1 Bed Suite       | 2 Bedroom         | 3 Bedroom       |
| 1 Bedroom + Study | 2 Bedroom + Study | Penthouse       |
| 1 Bedroom + Flexi | 2 Bedroom + Flexi | Super Penthouse |



Disclaimer: The information and illustrations in this document are indicative only and are subject to change. Crown W1 Pty Limited, Sathio Investments Pty Limited, Crown Cornerstone Investments Pty Limited and Crown W1 Developments Pty Limited and their related entities or corporations (including the landowner) and their agents do not warrant the accuracy of and do not accept any liability for any error or discrepancy in the information and illustrations. Any furniture depicted is illustrative only and will not form part of the property sold. The displayed information and illustrations do not form part of any contract for sale, and interested parties must rely on their own enquiries and the information in the contract for sale.



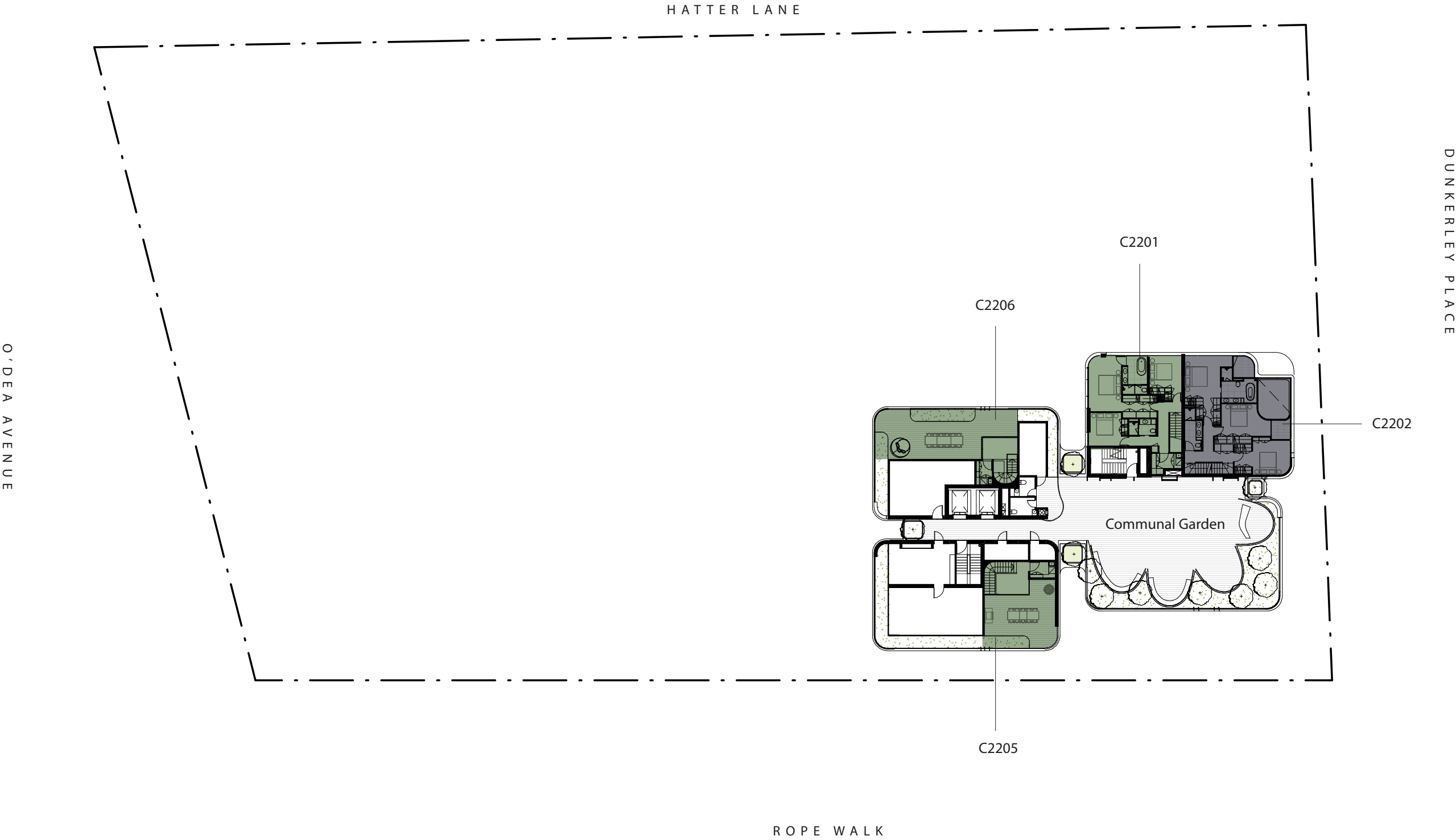
Level 22

- |                   |                   |                 |
|-------------------|-------------------|-----------------|
| 1 Bed Suite       | 2 Bedroom         | 3 Bedroom       |
| 1 Bedroom + Study | 2 Bedroom + Study | Penthouse       |
| 1 Bedroom + Flexi | 2 Bedroom + Flexi | Super Penthouse |



Disclaimer: The information and illustrations in this document are indicative only and are subject to change. Crown W1 Pty Limited, Sathio Investments Pty Limited, Crown Cornerstone Investments Pty Limited and Crown W1 Developments Pty Limited and their related entities or corporations (including the landowner) and their agents do not warrant the accuracy of and do not accept any liability for any error or discrepancy in the information and illustrations. Any furniture depicted is illustrative only and will not form part of the property sold. The displayed information and illustrations do not form part of any contract for sale, and interested parties must rely on their own enquiries and the information in the contract for sale.



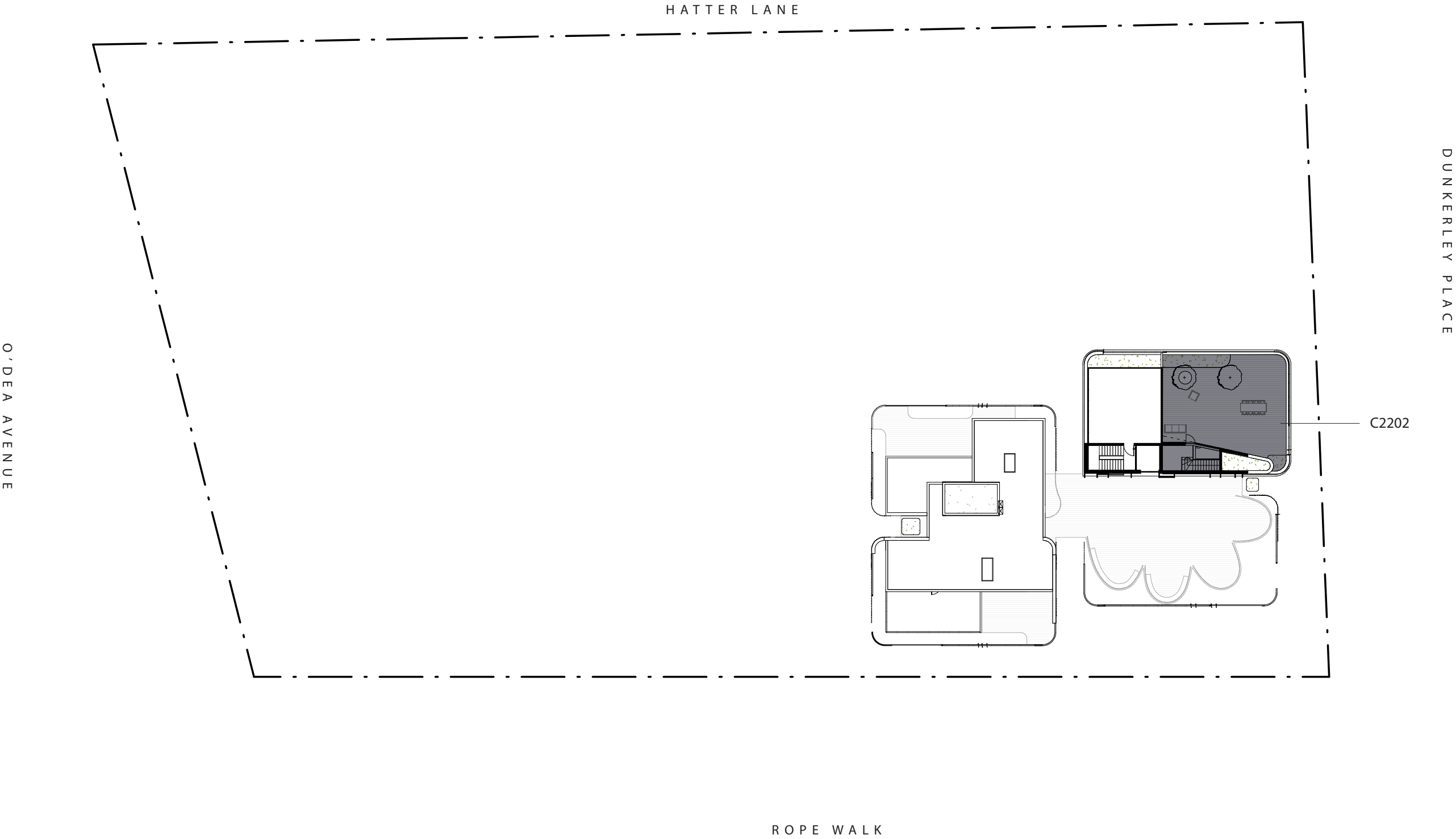


Level 23

- |                               |                               |                             |
|-------------------------------|-------------------------------|-----------------------------|
| <div></div> 1 Bed Suite       | <div></div> 2 Bedroom         | <div></div> 3 Bedroom       |
| <div></div> 1 Bedroom + Study | <div></div> 2 Bedroom + Study | <div></div> Penthouse       |
| <div></div> 1 Bedroom + Flexi | <div></div> 2 Bedroom + Flexi | <div></div> Super Penthouse |



Disclaimer: The information and illustrations in this document are indicative only and are subject to change. Crown W1 Pty Limited, Sathio Investments Pty Limited, Crown Cornerstone Investments Pty Limited and Crown W1 Developments Pty Limited and their related entities or corporations (including the landowner) and their agents do not warrant the accuracy of and do not accept any liability for any error or discrepancy in the information and illustrations. Any furniture depicted is illustrative only and will not form part of the property sold. The displayed information and illustrations do not form part of any contract for sale, and interested parties must rely on their own enquiries and the information in the contract for sale.



Level 25

- |                   |                   |                 |
|-------------------|-------------------|-----------------|
| 1 Bed Suite       | 2 Bedroom         | 3 Bedroom       |
| 1 Bedroom + Study | 2 Bedroom + Study | Penthouse       |
| 1 Bedroom + Flexi | 2 Bedroom + Flexi | Super Penthouse |



Disclaimer: The information and illustrations in this document are indicative only and are subject to change. Crown W1 Pty Limited, Sathio Investments Pty Limited, Crown Cornerstone Investments Pty Limited and Crown W1 Developments Pty Limited and their related entities or corporations (including the landowner) and their agents do not warrant the accuracy of and do not accept any liability for any error or discrepancy in the information and illustrations. Any furniture depicted is illustrative only and will not form part of the property sold. The displayed information and illustrations do not form part of any contract for sale, and interested parties must rely on their own enquiries and the information in the contract for sale.