

Level 02

- Studio
- 2 bedroom
- Penthouse
- 1 bedroom
- 3 bedroom



Disclaimer: The information and illustrations in this document are indicative only and are subject to change. Crown Group Pty Limited related entities or corporations (including the landowner) and their agents do not warrant the accuracy of and do not accept any liability for any error or discrepancy in the information and illustrations. Any furniture depicted is illustrative only and will not form part of the property sold. The displayed information and illustrations do not form part of any contract for sale, and interested parties must rely on their own enquiries and the information in the contract for sale.



Level 03

- Studio
- 2 bedroom
- 3 bedroom
- 1 bedroom
- Penthouse



Disclaimer: The information and illustrations in this document are indicative only and are subject to change. Crown Group Pty Limited related entities or corporations (including the landowner) and their agents do not warrant the accuracy of and do not accept any liability for any error or discrepancy in the information and illustrations. Any furniture depicted is illustrative only and will not form part of the property sold. The displayed information and illustrations do not form part of any contract for sale, and interested parties must rely on their own enquiries and the information in the contract for sale.



Level 05

- Studio
- 2 bedroom
- Penthouse
- 1 bedroom
- 3 bedroom



Disclaimer: The information and illustrations in this document are indicative only and are subject to change. Crown Group Pty Limited related entities or corporations (including the landowner) and their agents do not warrant the accuracy of and do not accept any liability for any error or discrepancy in the information and illustrations. Any furniture depicted is illustrative only and will not form part of the property sold. The displayed information and illustrations do not form part of any contract for sale, and interested parties must rely on their own enquiries and the information in the contract for sale.



Level 06

- Studio
- 2 bedroom
- Penthouse
- 1 bedroom
- 3 bedroom



Disclaimer: The information and illustrations in this document are indicative only and are subject to change. Crown Group Pty Limited related entities or corporations (including the landowner) and their agents do not warrant the accuracy of and do not accept any liability for any error or discrepancy in the information and illustrations. Any furniture depicted is illustrative only and will not form part of the property sold. The displayed information and illustrations do not form part of any contract for sale, and interested parties must rely on their own enquiries and the information in the contract for sale.



Level 07

- Studio
- 2 bedroom
- Penthouse
- 1 bedroom
- 3 bedroom



Disclaimer: The information and illustrations in this document are indicative only and are subject to change. Crown Group Pty Limited related entities or corporations (including the landowner) and their agents do not warrant the accuracy of and do not accept any liability for any error or discrepancy in the information and illustrations. Any furniture depicted is illustrative only and will not form part of the property sold. The displayed information and illustrations do not form part of any contract for sale, and interested parties must rely on their own enquiries and the information in the contract for sale.



Level 08

- Studio
- 2 bedroom
- Penthouse
- 1 bedroom
- 3 bedroom



Disclaimer: The information and illustrations in this document are indicative only and are subject to change. Crown Group Pty Limited related entities or corporations (including the landowner) and their agents do not warrant the accuracy of and do not accept any liability for any error or discrepancy in the information and illustrations. Any furniture depicted is illustrative only and will not form part of the property sold. The displayed information and illustrations do not form part of any contract for sale, and interested parties must rely on their own enquiries and the information in the contract for sale.



Level 09

- Studio
- 2 bedroom
- Penthouse
- 1 bedroom
- 3 bedroom



Disclaimer: The information and illustrations in this document are indicative only and are subject to change. Crown Group Pty Limited related entities or corporations (including the landowner) and their agents do not warrant the accuracy of and do not accept any liability for any error or discrepancy in the information and illustrations. Any furniture depicted is illustrative only and will not form part of the property sold. The displayed information and illustrations do not form part of any contract for sale, and interested parties must rely on their own enquiries and the information in the contract for sale.



Level 10

- Studio
- 1 bedroom
- 2 bedroom
- 3 bedroom
- Penthouse



Disclaimer: The information and illustrations in this document are indicative only and are subject to change. Crown Group Pty Limited related entities or corporations (including the landowner) and their agents do not warrant the accuracy of and do not accept any liability for any error or discrepancy in the information and illustrations. Any furniture depicted is illustrative only and will not form part of the property sold. The displayed information and illustrations do not form part of any contract for sale, and interested parties must rely on their own enquiries and the information in the contract for sale.



Level 11

- Studio
- 2 bedroom
- Penthouse
- 1 bedroom
- 3 bedroom



Disclaimer: The information and illustrations in this document are indicative only and are subject to change. Crown Group Pty Limited related entities or corporations (including the landowner) and their agents do not warrant the accuracy of and do not accept any liability for any error or discrepancy in the information and illustrations. Any furniture depicted is illustrative only and will not form part of the property sold. The displayed information and illustrations do not form part of any contract for sale, and interested parties must rely on their own enquiries and the information in the contract for sale.



Level 12

- Studio
- 2 bedroom
- Penthouse
- 1 bedroom
- 3 bedroom



Disclaimer: The information and illustrations in this document are indicative only and are subject to change. Crown Group Pty Limited related entities or corporations (including the landowner) and their agents do not warrant the accuracy of and do not accept any liability for any error or discrepancy in the information and illustrations. Any furniture depicted is illustrative only and will not form part of the property sold. The displayed information and illustrations do not form part of any contract for sale, and interested parties must rely on their own enquiries and the information in the contract for sale.



Level 13

- Studio
- 1 bedroom
- 2 bedroom
- 3 bedroom
- Penthouse



Disclaimer: The information and illustrations in this document are indicative only and are subject to change. Crown Group Pty Limited related entities or corporations (including the landowner) and their agents do not warrant the accuracy of and do not accept any liability for any error or discrepancy in the information and illustrations. Any furniture depicted is illustrative only and will not form part of the property sold. The displayed information and illustrations do not form part of any contract for sale, and interested parties must rely on their own enquiries and the information in the contract for sale.



Level 15

- Studio
- 1 bedroom
- 2 bedroom
- 3 bedroom
- Penthouse



Disclaimer: The information and illustrations in this document are indicative only and are subject to change. Crown Group Pty Limited related entities or corporations (including the landowner) and their agents do not warrant the accuracy of and do not accept any liability for any error or discrepancy in the information and illustrations. Any furniture depicted is illustrative only and will not form part of the property sold. The displayed information and illustrations do not form part of any contract for sale, and interested parties must rely on their own enquiries and the information in the contract for sale.



Level 16

- Studio
- 1 bedroom
- 2 bedroom
- 3 bedroom
- Penthouse



Disclaimer: The information and illustrations in this document are indicative only and are subject to change. Crown Group Pty Limited related entities or corporations (including the landowner) and their agents do not warrant the accuracy of and do not accept any liability for any error or discrepancy in the information and illustrations. Any furniture depicted is illustrative only and will not form part of the property sold. The displayed information and illustrations do not form part of any contract for sale, and interested parties must rely on their own enquiries and the information in the contract for sale.



Level 17

- Studio
- 1 bedroom
- 2 bedroom
- 3 bedroom
- Penthouse



Disclaimer: The information and illustrations in this document are indicative only and are subject to change. Crown Group Pty Limited related entities or corporations (including the landowner) and their agents do not warrant the accuracy of and do not accept any liability for any error or discrepancy in the information and illustrations. Any furniture depicted is illustrative only and will not form part of the property sold. The displayed information and illustrations do not form part of any contract for sale, and interested parties must rely on their own enquiries and the information in the contract for sale.

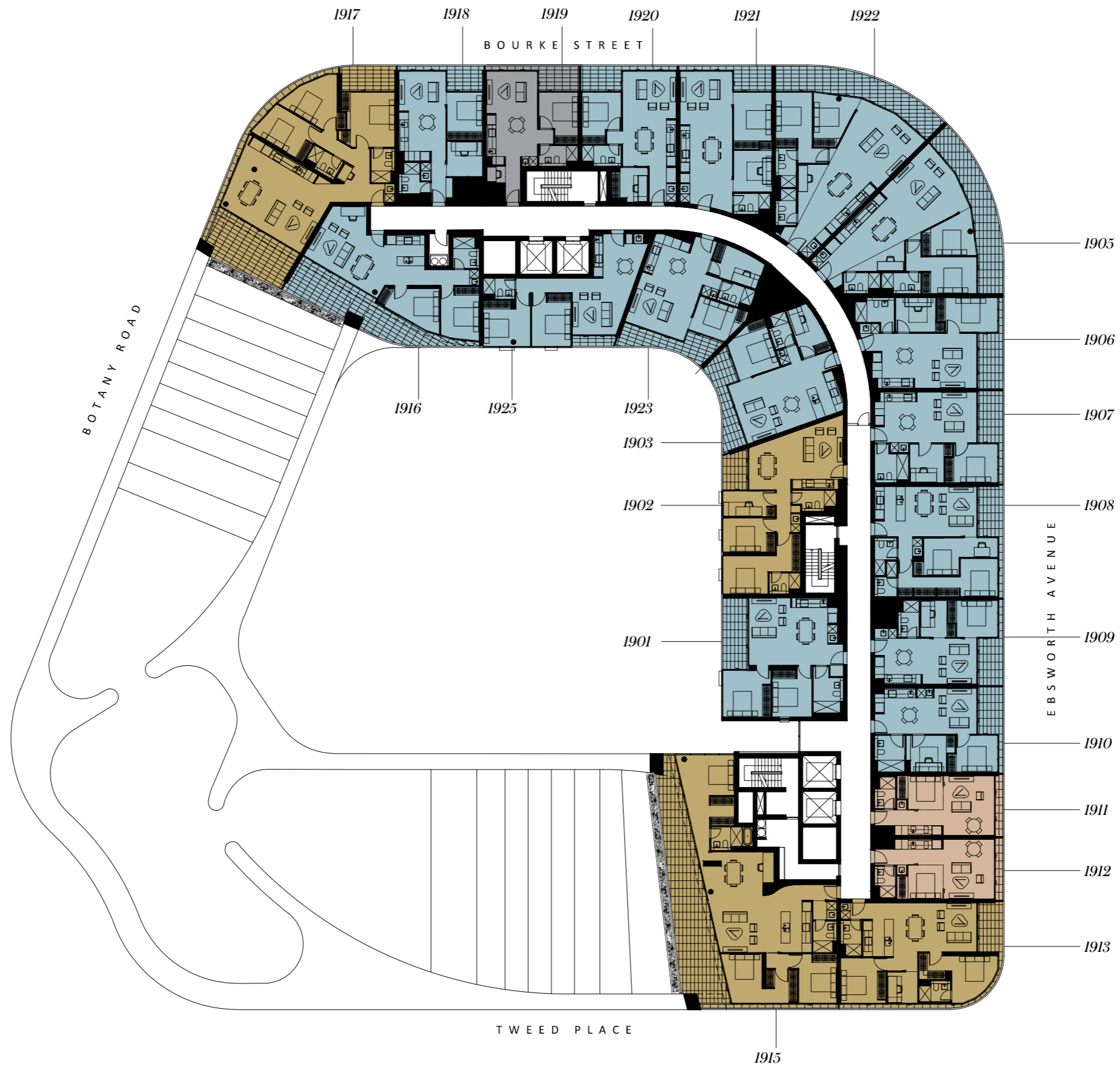


Level 18

- Studio
- 1 bedroom
- 2 bedroom
- 3 bedroom
- Penthouse



Disclaimer: The information and illustrations in this document are indicative only and are subject to change. Crown Group Pty Limited related entities or corporations (including the landowner) and their agents do not warrant the accuracy of and do not accept any liability for any error or discrepancy in the information and illustrations. Any furniture depicted is illustrative only and will not form part of the property sold. The displayed information and illustrations do not form part of any contract for sale, and interested parties must rely on their own enquiries and the information in the contract for sale.

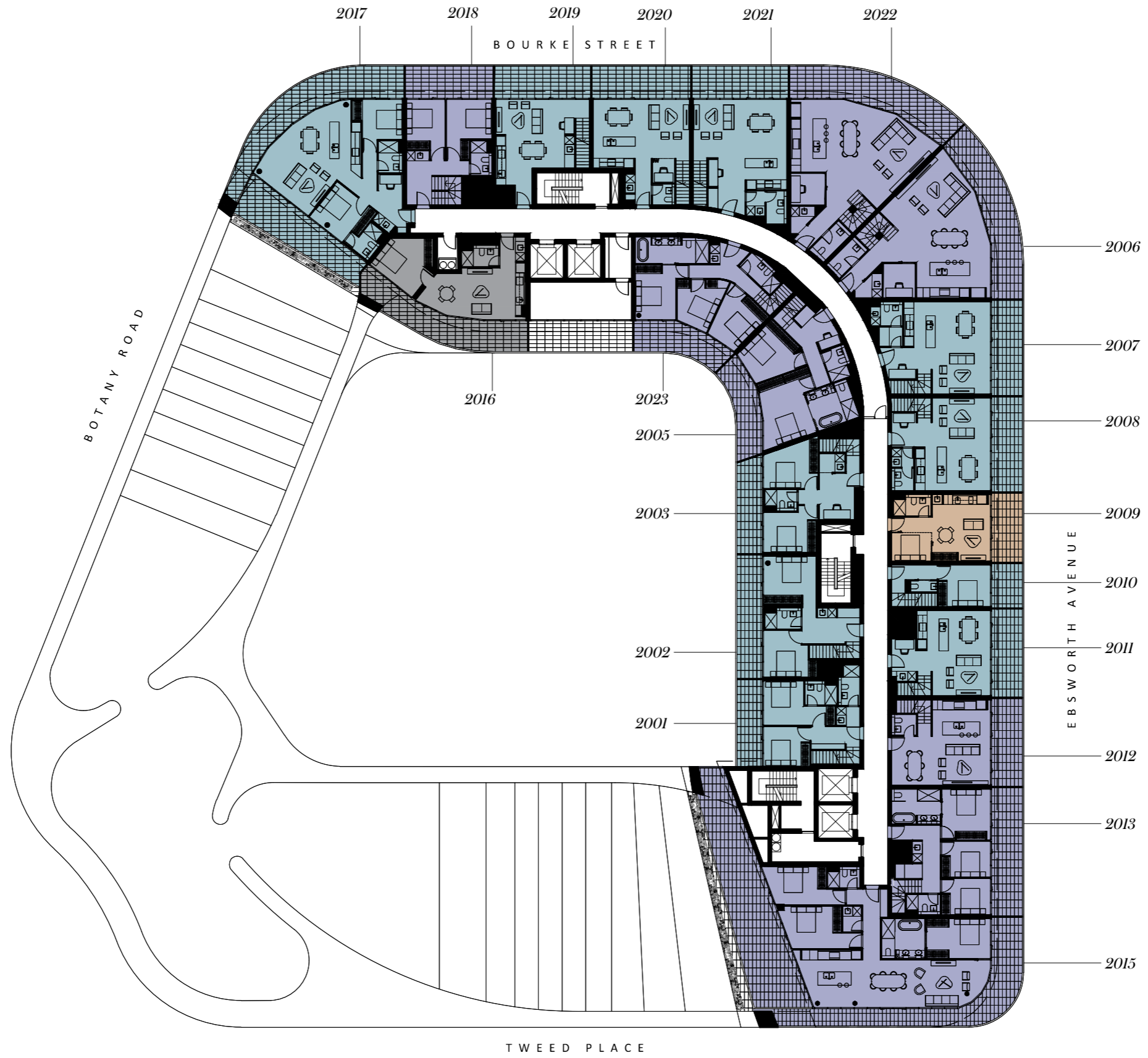


Level 19

- Studio
- 1 bedroom
- 2 bedroom
- 3 bedroom
- Penthouse



Disclaimer: The information and illustrations in this document are indicative only and are subject to change. Crown Group Pty Limited related entities or corporations (including the landowner) and their agents do not warrant the accuracy of and do not accept any liability for any error or discrepancy in the information and illustrations. Any furniture depicted is illustrative only and will not form part of the property sold. The displayed information and illustrations do not form part of any contract for sale, and interested parties must rely on their own enquiries and the information in the contract for sale.

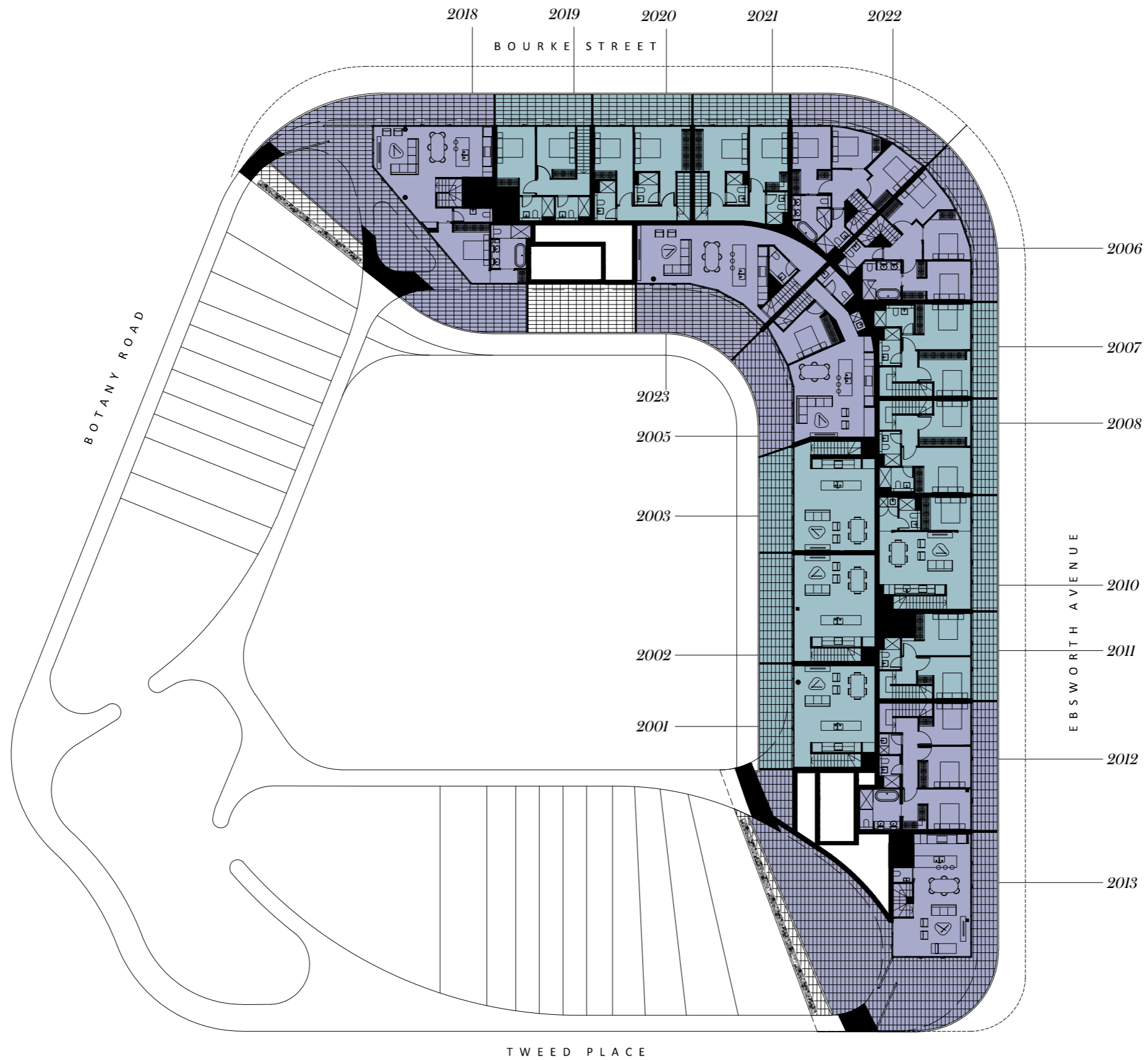


Level 20

- Studio
- 2 bedroom
- Penthouse
- 1 bedroom
- 3 bedroom



Disclaimer: The information and illustrations in this document are indicative only and are subject to change. Crown Group Pty Limited related entities or corporations (including the landowner) and their agents do not warrant the accuracy of and do not accept any liability for any error or discrepancy in the information and illustrations. Any furniture depicted is illustrative only and will not form part of the property sold. The displayed information and illustrations do not form part of any contract for sale, and interested parties must rely on their own enquiries and the information in the contract for sale.



Level 21

- Studio
- 2 bedroom
- Penthouse
- 1 bedroom
- 3 bedroom



Disclaimer: The information and illustrations in this document are indicative only and are subject to change. Crown Group Pty Limited related entities or corporations (including the landowner) and their agents do not warrant the accuracy of and do not accept any liability for any error or discrepancy in the information and illustrations. Any furniture depicted is illustrative only and will not form part of the property sold. The displayed information and illustrations do not form part of any contract for sale, and interested parties must rely on their own enquiries and the information in the contract for sale.