



12 Shinfield Avenue St Ives, NSW

Rosemill

Introducing Rosemill, a masterpiece of light, life and luxury. This boutique development of 1, 2, 3 and 4 bedroom luxury apartments is situated in a spectacular bushland setting while enjoying close proximity to a vibrant array of shopping and lifestyle amenities.

Light, bright and welcoming, Rosemill's spacious open-plan living spaces flow seamlessly onto huge entertainers' balconies that provide an idyllic spot to relax or spend time with friends and family. Floor-to-ceiling windows fill the home with an abundance of natural light and provide gorgeous, leafy views from every angle, whether you're relaxing on the sofa, prepping dinner, or sitting down at the dining table to enjoy a meal with friends.

Pricing.

Please note that there are multiple properties within each category; of varying prices within each range.

Private appointments available 7 days a week,

12a, 14 & 16 Shinfield Avenue,
St. Ives NSW 2075



Area: 71m²
Internal: 60m²
External: 11m²



DISCLAIMER: All descriptions have been prepared in good faith and with due care, however may be subject to change without notice after the date of printing. We cannot guarantee drawings are to scale. Purchasers should inform and assure themselves by inspection, independent advice or otherwise necessary prior to purchase. Areas are subject to final survey.



Ground Level
Unit 6
1 1 1

12a, 14 & 16 Shinfield Avenue,
St. Ives NSW 2075



Area: 89m²
Internal: 75m²
External: 14m²



DISCLAIMER: All descriptions have been prepared in good faith and with due care, however may be subject to change without notice after the date of printing. We cannot guarantee drawings are to scale. Purchasers should inform and assure themselves by inspection, independent advice or otherwise necessary prior to purchase. Areas are subject to final survey.



Level 1
Lot 47
2 2 1

12a, 14 & 16 Shinfield Avenue,
St. Ives NSW 2075



Area: 172m²
Internal: 136m²
External: 36m²



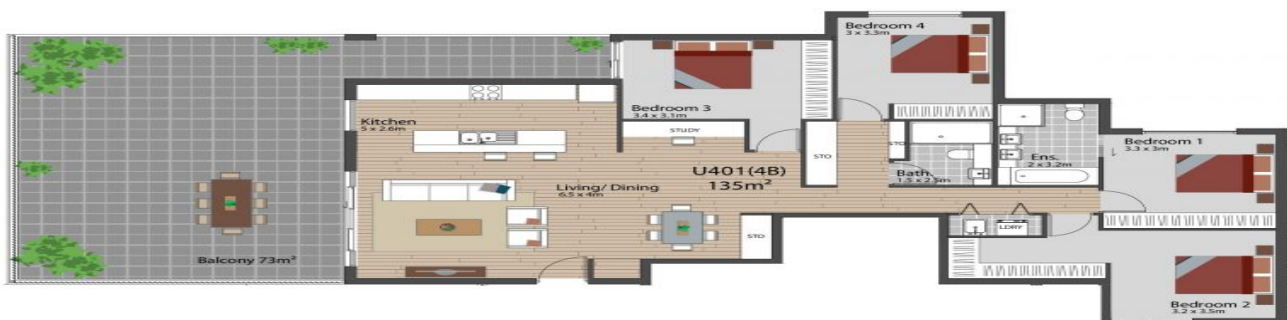
DISCLAIMER: All descriptions have been prepared in good faith and with due care, however may be subject to change without notice after the date of printing. We cannot guarantee drawings are to scale. Purchasers should inform and assure themselves by inspection, independent advice or otherwise necessary prior to purchase. Areas are subject to final survey.



**Level 1
Lot 16**

3 3 2

12a, 14 & 16 Shinfield Avenue,
St. Ives NSW 2075



Area: 208m²
Internal: 135m²
External: 73m²



DISCLAIMER: All descriptions have been prepared in good faith and with due care, however may be subject to change without notice after the date of printing. We cannot guarantee drawings are to scale. Purchasers should inform and assure themselves by inspection, independent advice or otherwise necessary prior to purchase. Areas are subject to final survey.



**Level 4
Lot 39**

4 2 2