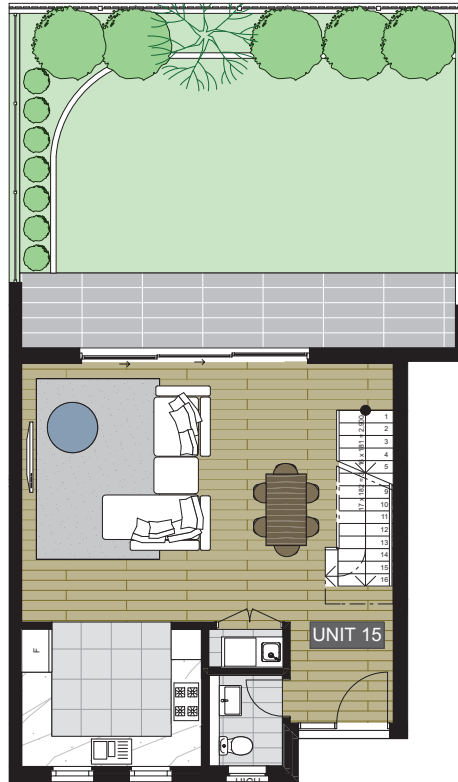
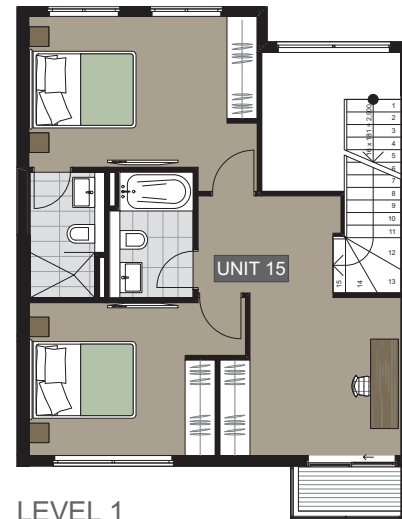


**BASEMENT**



**GROUND LEVEL**



**LEVEL 1**



# KAYLINA GARDENS

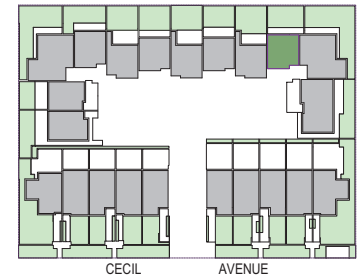
CASTLE HILL

10-16 CECIL AVENUE  
CASTLE HILL

## UNIT 15

### UNIT AREA

INTERNAL	116 SQM
EXTERNAL	60 SQM
BASEMENT	43 SQM
<b>TOTAL</b>	<b>219 SQM</b>



Disclaimer: Please note that this floor plan is a guide only and was prepared prior to completion. The information contained herein is believed to be correct but is not guaranteed. Dimensions are approximate. Changes may be made during the development. All dimensions, areas, fittings and applications may be subject to change without notice in accordance with the provisions of the contract of sale. The furniture depicted is not included with any sale. Prospective purchasers may rely on their own enquiries.