

# INVESTMENT A spacious 4 bedroom, 2 bathroom home located in Prominence Estate.



ID. 10552

# \$610,100

Beal + Vogue Facade - 231m<sup>2</sup> | Lot 89 (The Summit Stage 3) - 434m<sup>2</sup> - Escalade Circuit , Pallara



Land: \$330,000 Home: \$280,100

Price Breakdown

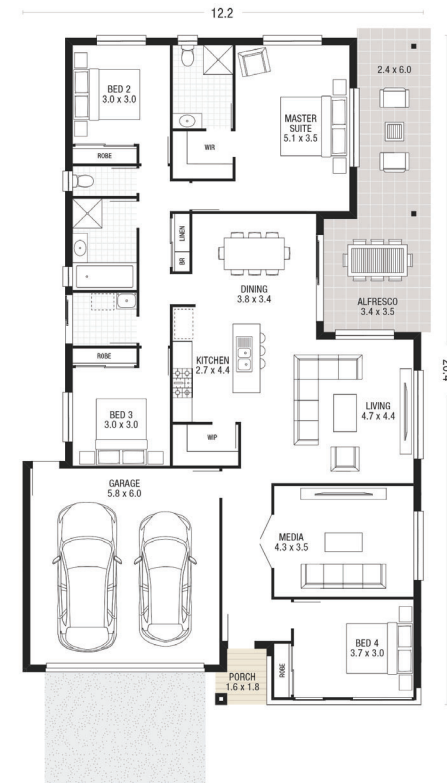
## Prominence Estate

Lot 89 - 434m<sup>2</sup>

Set among the natural parkland in the popular suburb of Pallara, sits our impressive estate, Prominence. Located in the heart of Brisbane's western corridor, Prominence Estate is nestled perfectly alongside its well renowned sister development, Prominence Heathwood.

## Tenant Ready Extras

- ✓ Site Foundation (Fixed Cost)
- ✓ Site Retaining (Fixed Cost)
- ✓ Ceiling Fans (Bed/Living)
- ✓ Carpet Flooring
- ✓ TV antenna and booster
- ✓ Turf to Frontyard
- ✓ Roller Blinds
- ✓ Dishwasher
- ✓ Landscaping (Full PK1)
- ✓ Stone Benchtop (Bathroom)
- ✓ Driveway Exposed Agg
- ✓ Air-Conditioning: Main Bed (S/S)
- ✓ Light Fittings
- ✓ External Power Point
- ✓ Plants and Garden Edging
- ✓ Clothesline W-Mount + Slab
- ✓ Fence Return and Gate
- ✓ Alfresco Slab (Exposed Agg)
- ✓ Stone Benchtop (Kitchen)
- ✓ Window Coverings
- ✓ Tiled Floors
- ✓ Safety Grilles Throughout



Photographs may include upgrade items. Unless specifically listed in package detail, these items are not included in advertised price and may be added for an additional cost. Price based on noted façade and Standard Investment Inclusions. Speak to your Investment Consultant for full details. All packages subject to developer approval. Ausbuild Pty Ltd QBCC LIC 21710 05 November 2019.

ENQUIRE  
TODAY

