



House design for illustration only, actual appearance may varies

\$758,000
(Standard)



3



2



1

LOT NUMBER:

L16

LAND SIZE:

250.1 m²
W14.13m × L17.7m

LAND PRICE:

\$488,000

HOUSE PRICE:

\$270,000

Ground Floor

100 m²

Garage

17 m²

Porch

3 m²

Total

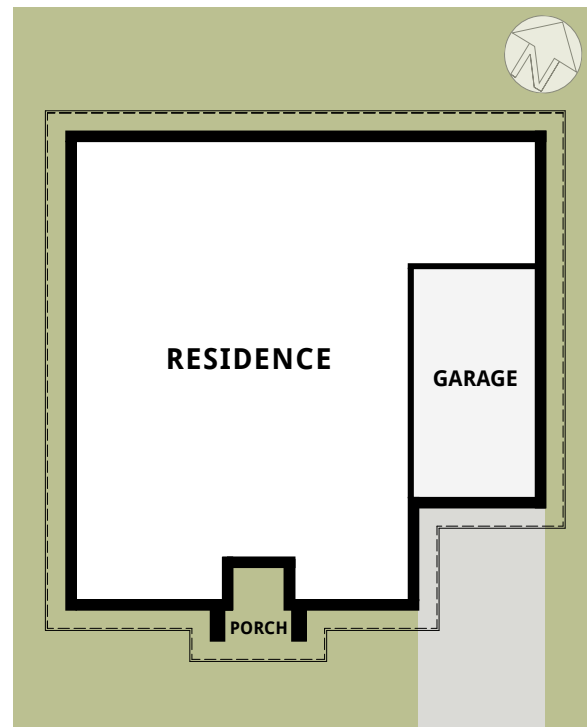
120 m²

Land Settlement Time:

Mid 2020

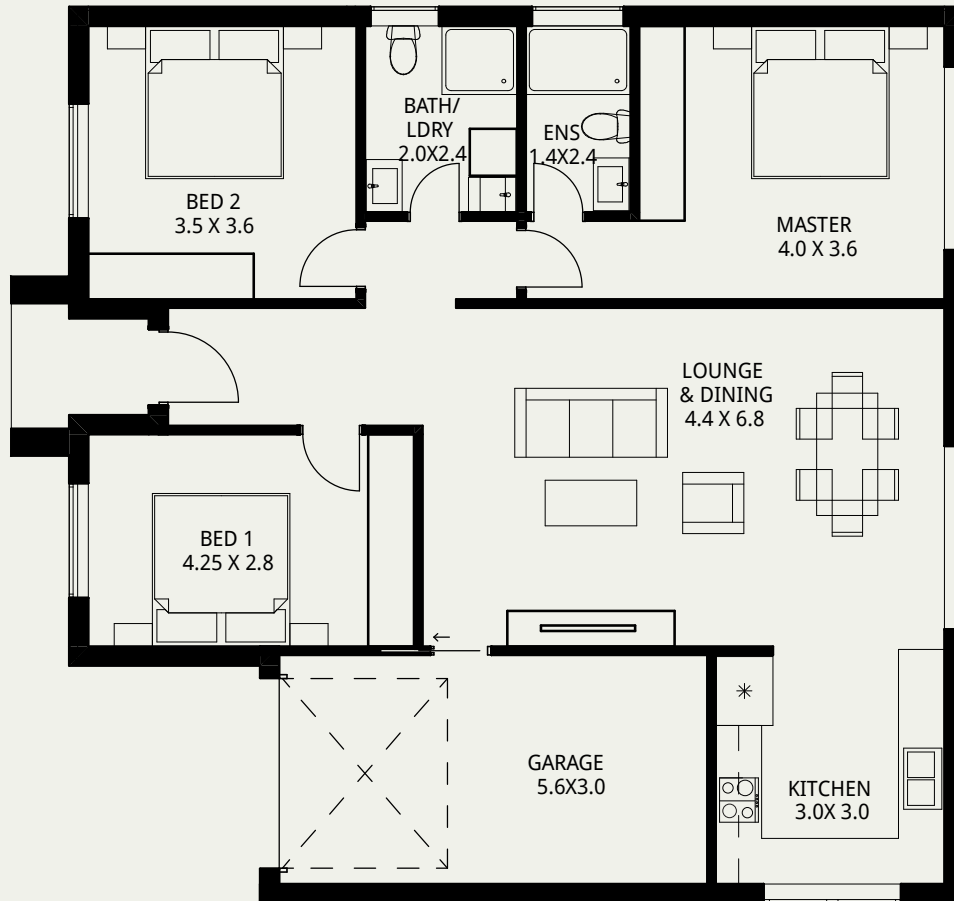
Suburb:

Rouse Hill



E-PROPERTY

e-Property Group Copyright © 2020



Ground Floor	100 m ²
Garage	17 m ²
Porch	3 m ²
Total	120 m ²

e-Property Group Copyright © 2020

EP-house Standard Highlights:

H2 treated pine timber framing.

Colorbond Steel Fencing System.

Face brick from builder's range.

2500mm ceiling height for Ground Floor.

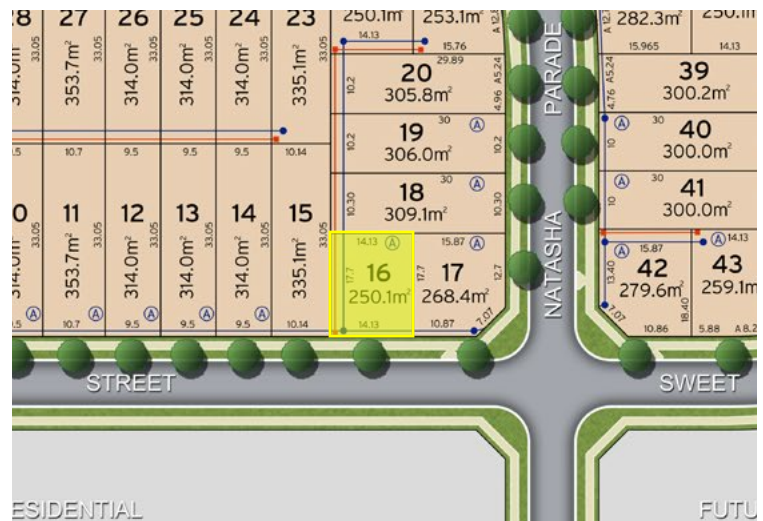
Aluminium SINGLE-GLAZING windows.

20mm Stone Kitchen Bench Top.

Kleenmaid 600mm Kitchen Cooking Range .

Zoned Ducted Air - Condition.

Full Turnkey Package driveway landscaping included.



E-PROPERTY Group Pty Ltd
 www.epropertyaus.com
 90 Queens Rd, Five Dock NSW 2046



Whilst reasonable effort has been made to ensure accuracy, pictures, photographs and floor plans are illustrative and there may be some variations between this depiction and the detailed plans. Pictures and photographs may include items not included in the E-PROPERTY Group Specifications. See your sales agent for detailed home and landscape plans and inclusions. *House and land package price is correct at time of printing though is subject to change without notice. Stamp duty on land, legal fees, titles and property reports are not included in price. Total square meters and square size measurements of this house are calculated by measuring from the internal side of external walls. Where no external walls exist, for the purpose of measuring building area (such as porticos, balconies or outdoor rooms) E-PROPERTY Group assumed a straight line between the exterior wall so columns. If this is a National Rental Affordability Scheme approved property, see fahcsia.gov.au for details. E-PROPERTY Group Pty Ltd (ACN613499362).