

**Garfield Street, 31- 37B
Wentworthville**

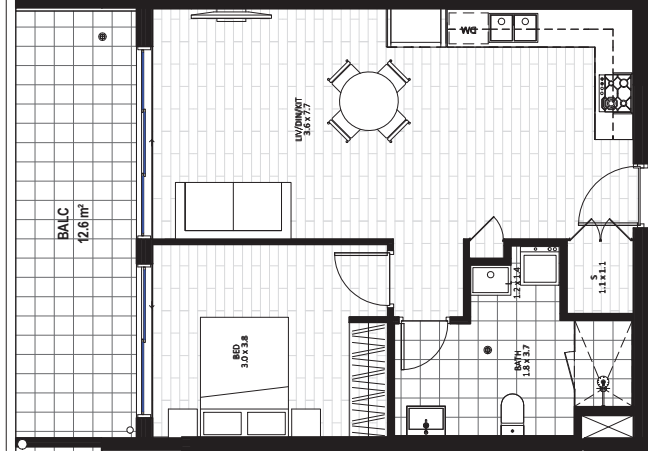
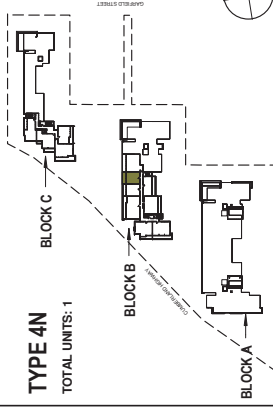
APARTMENT NO:

B-505

LOCATION PLAN

TYPE 4N

TOTAL UNITS: 1



General Note:

Area quoted to be used as a guide only. This plan is for illustration purposes only. All areas are subject to final survey. We do not warrant the accuracy of the area. We have no doubt it is accurate however we cannot guarantee it. Areas are subject to final survey. Layout may change due to final council approval. The calculation adopted. The marketing plan area is based on the floor area while the strata plan area is based on Strata Schemes (Residential Development) Act 1973 (Note: Store(s), Robber(s), Linen(s), Bath fixtures, Laundry fixtures & kitchen joinery fixtures, form part of the strata plan area and are included in the strata plan area. Windows and doors are not included as part of sale. Windows and doors sizes are indicative and subject to change based on legislative approval.

PLEASE NOTE THAT THE USE OF BUSINESSES AND STRATA PLAN MIGHT DIFFER BECAUSE OF ITS DIFFERENT METHOD OF CALCULATION.

Internal Area:	50	m ²
Open Space Area/ BALC:	12	m ²
Total Area:	62	m ²
Car Space Area:	13	m ²
Basement Storage Area:	6	m ³



Scale:

