

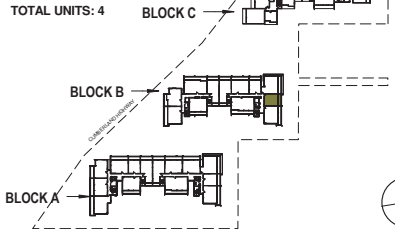


**Garfield Street,31- 37B  
Wentworthville**

APARTMENT NO:  
B-111  
B-211  
B-311

LOCATION PLAN

**TYPE 4K**  
TOTAL UNITS: 4



	1		1		1
Internal Area:	50	m <sup>2</sup>			
Open Space Area/ BALC:	12	m <sup>2</sup>			
Total Area:	62	m <sup>2</sup>			
Car Space Area:	13	m <sup>2</sup>			
Basement Storage Area :	4	m <sup>3</sup>			
Scale:					

**General Note:**

Area quoted to be used as guide only. This plan is for illustration purposes only. All information contained is gathered from sources deemed to be reliable. We have no doubt it is accurate however we cannot guarantee it.  
Areas are subject to final survey. Layout may change due to final council approval. The marketing plan and strata plan area will vary because of the different methods of calculation adopted. The marketing plan area is based on the floor area while the strata plan area is based on Strata Schemes (Freehold Development) Act 1973. Note: Store(S), Robet(R), Linen(L), Bath fixtures, Laundry fixtures & Kitchen joinery fixtures, form part of sales package. TV and other items such as credenza, sofa, study desk, TV units & beds are not included as part of sale. Windows and doors sizes are indicative and subject to change based on legislative approval.

**PLEASE NOTE THAT THE AREA OF MARKETING AND STRATA PLAN MIGHT DIFFER BECAUSE OF IT'S DIFFERENT METHOD OF CALCULATION.**